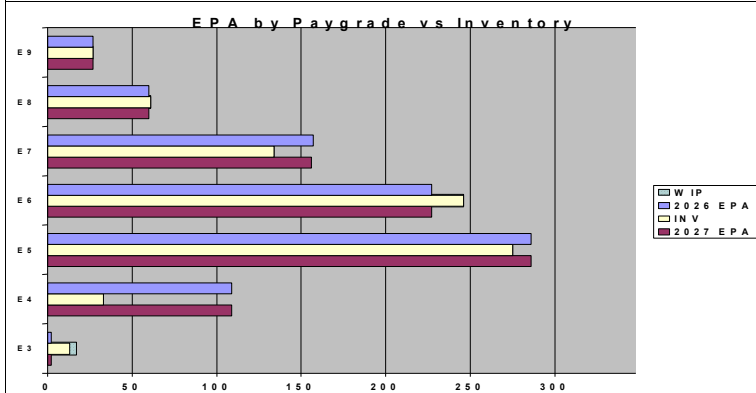
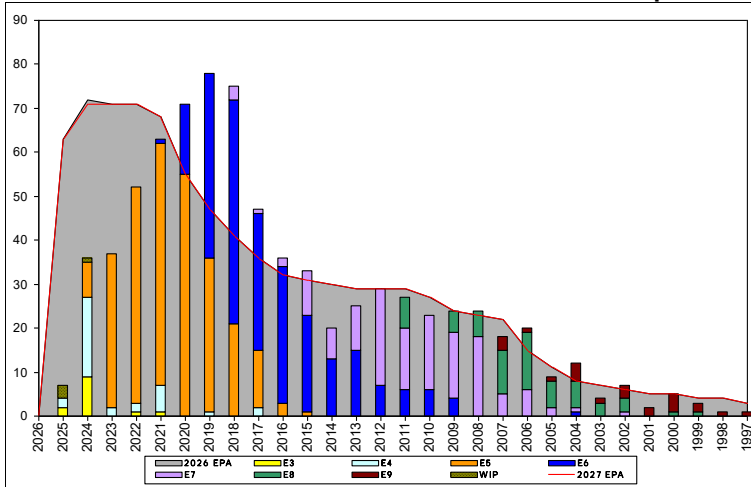


## Special Warfare Boat Operator - E350



	E1-3	E4	E5	E6	E7	E8	E9	TOTAL
% INV to FY26 EPA	650%	30%	96%	108%	85%	102%	100%	91%
EPA (FY26)	2	109	286	227	157	60	27	868
INVENTORY	13	33	275	246	134	61	27	789
EPA (FY27)	2	109	286	227	156	60	27	867
% INV to FY27 EPA	650%	30%	96%	108%	86%	102%	100%	91%
INV +WIP / FY26 EPA	850%							91%
INVENTORY	17	4	← E-3 and Below WIP					793
INV +WIP / FY26 EPA	850%							91%

### Sea Shore Flow

TOUR	SEA	SHORE
1ST	60	36
2ND	60	36
3RD	48	36
4TH	48	36
5TH	36	36
6TH	36	36
7TH	36	36

### FORCE STRUCTURE MANNING TO BA

PG	SEA	INV	BA	SHORE	INV	BA	SEA + SHORE	TOTAL INV	TOTAL BA
E1-3	#Div/0!	8					#Div/0!	8	
E4	29.0%	27	93				29.0%	27	93
E5	95.0%	267	281	200.0%	2	1	95.4%	269	282
E6	128.7%	215	167	61.0%	25	41	115.4%	240	208
E7	105.0%	106	101	55.1%	27	49	88.7%	133	150
E8	120.0%	42	35	70.8%	17	24	100.0%	59	59
E9	130.0%	13	10	82.4%	14	17	100.0%	27	27
Total	98.7%	678	687	64.4%	85	132	93.2%	763	819

### TIS to PG Years

Pay Grade	E1-E3	E4	E5	E6	E7	E8	E9
ALL Navy	TIS	2.2	4.0	8.7	13.8	17.8	21.7
SB	TIS	2.3	3.3	7.0	13.5	18.1	21.3
ALL Navy	TIG	1.3	1.8	4.7	5.7	5.0	4.6
SB	TIG	1.5	1.4	4.0	6.7	5.8	5.7

### Zone Info

	ZONE A	ZONE B	ZONE C	ZONE D	ZONE E	ALL ZONES
FY26 Manning:	70.0%	139.0%	92.0%	89.0%	75.0%	91.0%
FYTD RENL Rate:	93.5%	70.2%	75.8%	100.0%	32.5%	74.4%

### NOTES

No early separation or convert out opportunity for SB (O52A) rated sailors.

Conditional releases for SBs are considered for the applicable programs at last submission opportunity prior to service members SEAOS.

Must be Pre-LPO and not serving in the milestone billet

SB rating conversion requests to attend SB "A" school, are reviewed quarterly.

For conversion guidance see NSW applicants page at: <https://www.mynavyhr.navy.mil/Career-Management/Community-Management/Enlisted/Special-Warfare/NSW-Applicants/>