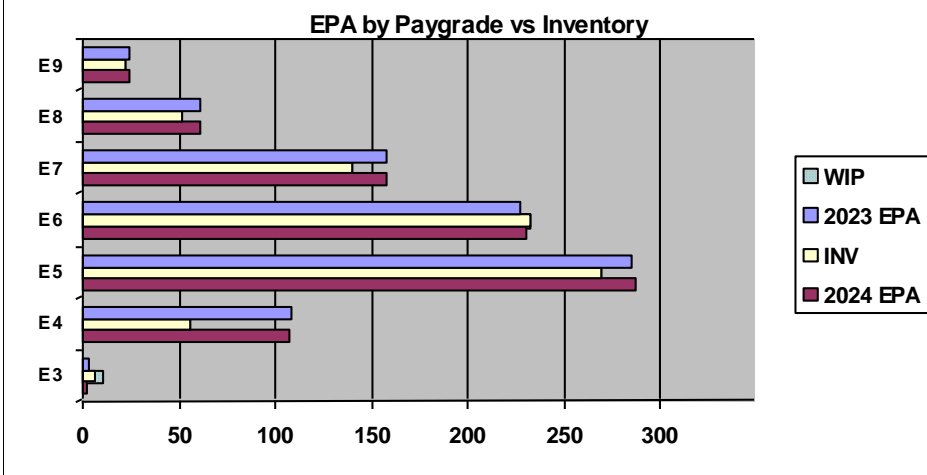
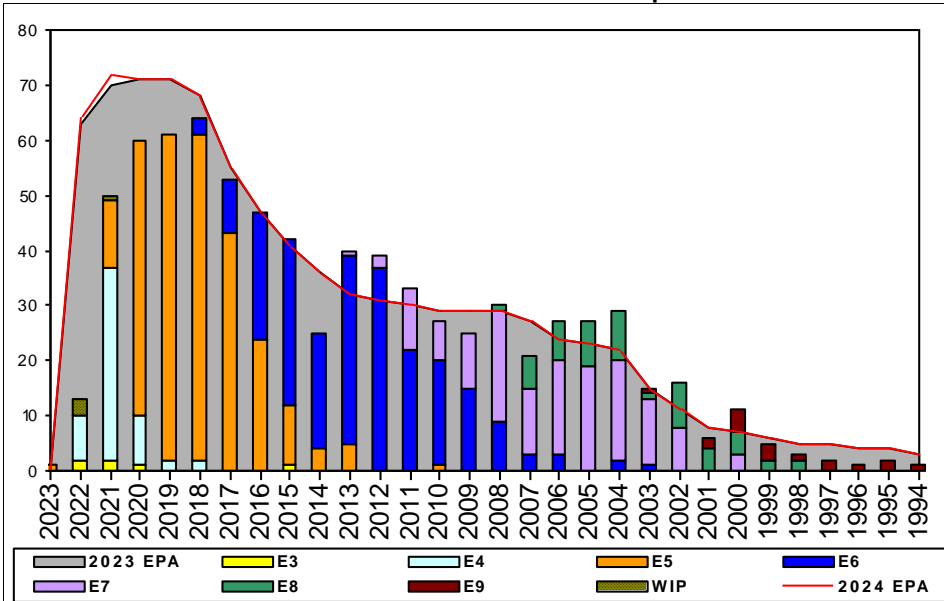


Special Warfare Boat Operator - E350



	E1-3	E4	E5	E6	E7	E8	E9	TOTAL
% INV to FY23 EPA	200%	52%	94%	102%	89%	85%	92%	90%
EPA (FY23)	3	108	285	227	158	61	24	866
INVENTORY	6	56	269	232	140	52	22	777
EPA (FY24)	2	107	287	230	158	61	24	869
% INV to FY24 EPA	300%	52%	94%	101%	89%	85%	92%	89%
INV +WIP / FY23 EPA	333%							90%
INVENTORY	10	4	← E-3 and Below WIP					781
INV +WIP / FY24 EPA	500%							90%

Sea Shore Flow			FORCE STRUCTURE MANNING TO BA									
TOUR	SEA	SHORE	PG	SEA	INV	BA	SHORE	INV	BA	SEA + SHORE	TOTAL INV	TOTAL BA
1ST	60	36	E1-3	#Div/0!	5					#Div/0!	5	
2ND	60	36	E4	47.3%	43	91				47.3%	43	91
3RD	48	36	E5	90.7%	255	281	100.0%	1	1	90.8%	256	282
4TH	48	36	E6	116.3%	186	160	84.0%	42	50	108.6%	228	210
5TH	36	36	E7	92.2%	94	102	83.7%	41	49	89.4%	135	151
6TH	36	36	E8	83.3%	35	42	88.9%	16	18	85.0%	51	60
7TH	36	36	E9	111.1%	10	9	73.3%	11	15	87.5%	21	24
			Total	91.7%	628	685	83.5%	111	133	90.3%	739	818

ADV OPP. (Cycles 253/254/256)							
Pay Grade	E1-3	E4	E5	E6	E7	E8	E9
All-Navy	TIR	26.0%	16.9%	7.53%	26.6%	12.9%	15.6%
SB	TIR	100.0%	49.3%	3.6%	46.7%	14.4%	16.0%

Zone Info	ZONE A	ZONE B	ZONE C	ZONE D	ZONE E	ALL ZONES
FY23 Manning:	77.0%	91.0%	115.0%	101.0%	84.0%	90.0%
FYTD RENL Rate:	76.2%	65.0%	76.5%	86.7%	53.3%	71.6%
FY24 Manning:	76.0%	91.0%	115.0%	101.0%	84.0%	89.4%

NOTES

Current SB rating manned at 90%.

No early separation or convert out opportunity for SB (O52A) rated sailors.

Fleet Convert in opportunity is extremely competitive and is available for E5 and below in year groups 2018, 2019, 2020, 2021, 2022.

Rating criteria and physical requirements are set forth in MILPERSMAN 1220-400 and 1220-410.

Physical Screening Tests (PST) must be coordinated through and signed by the NSW Assessment Team and completion documented IAW MILPERSMAN 1220-400. PST schedules for Fleet conversion candidates can be viewed at www.sealswcc.com.

SB rating conversion requests, to attend SB "A" school, are reviewed quarterly.

Windows for submitting conversion requests: FY23 Q2 24 Feb-10 Mar, Q3 1-19 May, Q4 31 Jul-18 Aug.

Receipt notification will be sent NLT 1 WK of receipt of request. Allow 45 days from deadline before inquiring about results.

See www.sealswcc.com and "From Fleet to Naval Special Warfare" <https://www.sealswcc.com/navy-seal-podcast.html> for more information