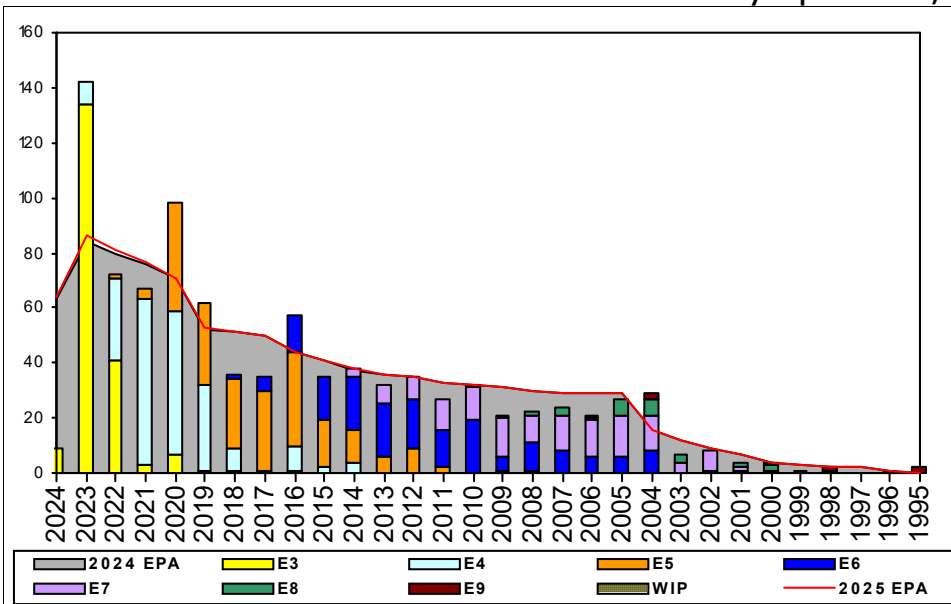


# Culinary Specialist, Submarine - C170

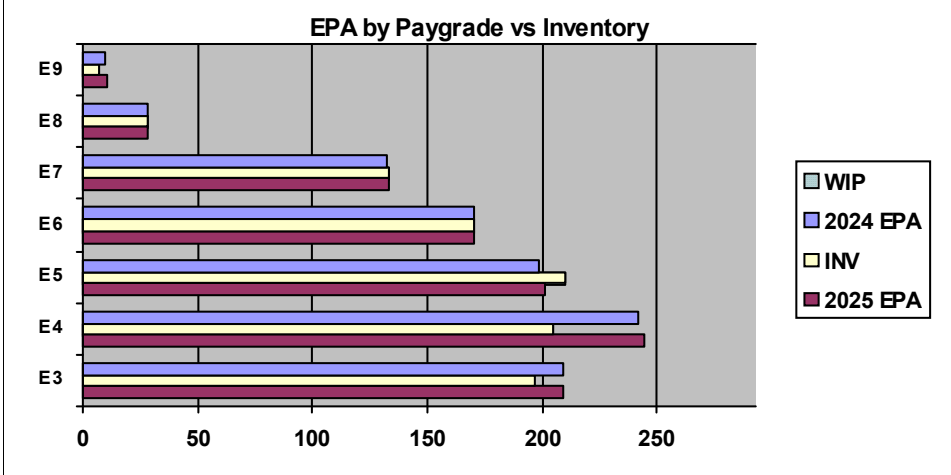


Sea Shore Flow		
TOUR	SEA	SHORE
1ST	51	36
2ND	54	36
3RD	48	36
4TH	36	36
5TH	36	36
6TH	36	36
7TH	36	36

FORCE STRUCTURE MANNING TO BA										
PG	SEA	INV	BA	SHORE	INV	BA	SEA + SHORE	TOTAL INV	TOTAL BA	
E1-3	64.7%	108	167	#Div/0!	3		66.5%	111	167	
E4	87.7%	164	187	65.2%	30	46	83.3%	194	233	
E5	110.8%	113	102	97.7%	86	88	104.7%	199	190	
E6	96.0%	96	100	101.6%	64	63	98.2%	160	163	
E7	80.6%	75	93	136.1%	49	36	96.1%	124	129	
E8	200.0%	10	5	81.0%	17	21	103.8%	27	26	
E9	57.1%	4	7	150.0%	3	2	77.8%	7	9	
<b>Total</b>	<b>86.2%</b>	<b>570</b>	<b>661</b>	<b>98.4%</b>	<b>252</b>	<b>256</b>	<b>89.6%</b>	<b>822</b>	<b>917</b>	

### ADV OPP. (Cycles 257/258/260)

Pay Grade	E1-3	E4	E5	E6	E7	E8	E9
All-Navy	TIR	45.0%	29.0%	9.0%	28.8%	16.8%	21.0%
CSS	TIR	35.8%	11.4%	9.1%	45.1%	9.5%	30.0%



	E1-3	E4	E5	E6	E7	E8	E9	TOTAL
% INV to FY24 EPA	94%	85%	106%	100%	101%	100%	70%	96%
EPA (FY24)	209	242	198	170	132	28	10	989
INVENTORY	197	205	210	170	133	28	7	950
EPA (FY25)	209	244	201	170	133	28	11	996
% INV to FY25 EPA	94%	84%	104%	100%	100%	100%	64%	95%
INV +WIP / FY24 EPA								
INVENTORY			← E-3 and Below WIP					
INV +WIP / FY25 EPA								

Zone Info	ZONE A	ZONE B	ZONE C	ZONE D	ZONE E	ALL ZONES
FY24 Manning:	113.0%	85.0%	88.0%	83.0%	68.0%	96.0%
FYTD RENL Rate:	78.6%	61.1%	89.5%	100.0%		76.2%
FY25 Manning:	111.0%	85.0%	87.0%	83.0%	68.0%	95.4%

### NOTES

CSS is designated a OPEN rate in CWAY  
 Convert-in options are available  
 ASVAB: PER Rating Requirments in CWAY  
 SRB: Zone A 1.0 \$30k (SRB eligibility chart dated 03OCT23)  
 SRB: Zone B 0.5 \$30k (SRB eligibility chart dated 03OCT23)  
 SRB: Zone C 1.5 \$45k (SRB eligibility chart dated 03OCT23)  
 SRB: (840A) Zone B 1.5 \$45k (SRB eligibility chart dated 03OCT23)  
 SDIP: E4/E5 \$800 (SDIP eligibility chart dated 07FEB24)  
 SDIP: E6/E7 \$750 (SDIP eligibility chart dated 07FEB24)  
 SDIP: E-8 \$600 (SDIP eligibility chart dated 07FEB24)  
 SDIP: E-9 \$700 (SDIP eligibility chart dated 07FEB24)  
 Pay for Performance program rating  
 Selective Training and Reenlistment (STAR) program eligible.