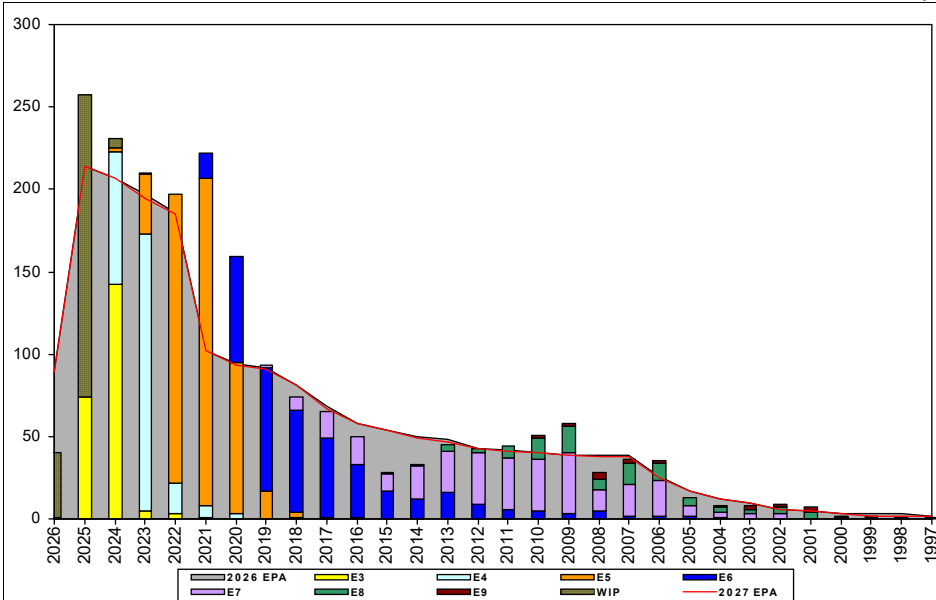
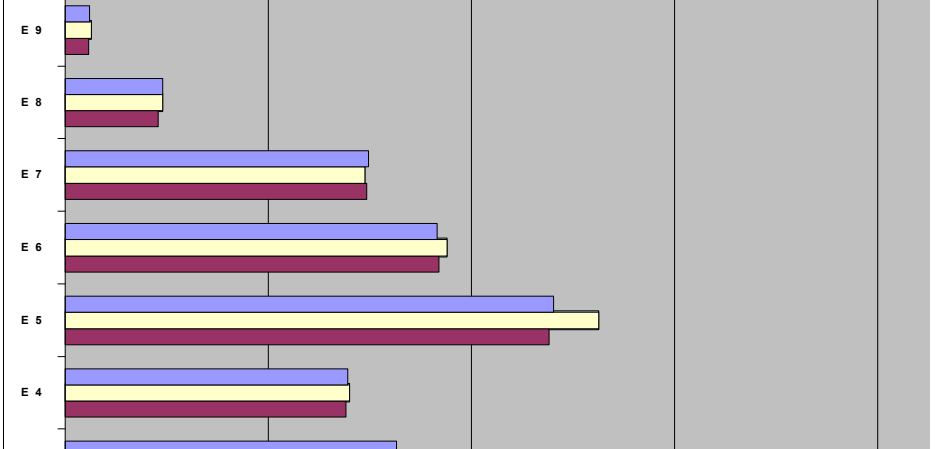


Electronics Technician, Sub, Navigation - C121



EPA by Paygrade vs Inventory



	E1-3	E4	E5	E6	E7	E8	E9	TOTAL
% INV to FY26 EPA	69%	101%	109%	103%	99%	100%	108%	98%
EPA (FY26)	326	278	481	366	299	96	24	1870
INVENTORY	225	280	526	376	295	96	26	1824
EPA (FY27)	321	277	477	368	297	92	23	1855
% INV to FY27 EPA	70%	101%	110%	102%	99%	104%	113%	98%
INV +WIP / FY26 EPA	139%							110%
INVENTORY	454	229	← E-3 and Below WIP					2053
INV +WIP / FY26 EPA	141%							111%

Sea Shore Flow

TOUR	SEA	SHORE
1ST	48	36
2ND	42	36
3RD	36	36
4TH	36	36
5TH	36	36
6TH	36	36
7TH	36	36

FORCE STRUCTURE MANNING TO BA

PG	SEA	INV	BA	SHORE	INV	BA	SEA + SHORE	TOTAL INV	TOTAL BA
E1-3	130.4%	206	158	#Div/0!	4		132.9%	210	158
E4	98.0%	245	250	166.7%	20	12	101.1%	265	262
E5	142.6%	422	296	53.5%	83	155	112.0%	505	451
E6	69.1%	112	162	138.2%	235	170	104.5%	347	332
E7	102.4%	171	167	87.0%	107	123	95.9%	278	290
E8	73.8%	31	42	121.6%	62	51	100.0%	93	93
E9	113.3%	17	15	100.0%	8	8	108.7%	25	23
Total	110.5%	1204	1090	100.0%	519	519	107.1%	1723	1609

TIS to PG Years

Pay Grade	E1-E3	E4	E5	E6	E7	E8	E9
ALL Navy	TIS	2.2	4.0	8.7	13.8	17.8	21.7
ETV	TIS	2.3	3.5	6.9	12.2	15.6	20.2
ALL Navy	TIG	1.3	1.8	4.7	5.7	5.0	4.6
ETV	TIG	1.2	1.1	3.2	4.8	4.7	4.2

TIG to PG Years

Zone Info

	ZONE A	ZONE B	ZONE C	ZONE D	ZONE E	ALL ZONES
FY26 Manning:	108.0%	86.0%	70.0%	103.0%	78.0%	98.0%
FYTD RENL Rate:	77.4%	53.3%	100.0%	100.0%	21.4%	72.0%

NOTES

ETV is designated an BALANCED rate in C-WAY
 Convert-in options are available
 SRB: Zone A 1.0 \$30k (SRB eligibility chart dated 10DEC25)
 SRB: Zone B 1.5 \$45k (SRB eligibility chart dated 10DEC25)
 SRB: (T21A) Zone B 2.5 \$45k (SRB eligibility chart dated 10DEC25)
 SRB: (T21A) Zone C 2.5 \$45k (SRB eligibility chart dated 10DEC25)
 SDIP available based on region for E4-E9 and NEC's T21A (E6-E9), T18A/T20A (E6-E8), T31A (E6-E8).
 See SDIP chart on mynavyhr.com (01-OCT-2025) for SDIP award levels.
 SDAP: SD-5 ANAV (SDAP Effective 15DEC25)
 SDAP: SD-2 SUB SQD ANAV (SDAP Effective 15DEC25)