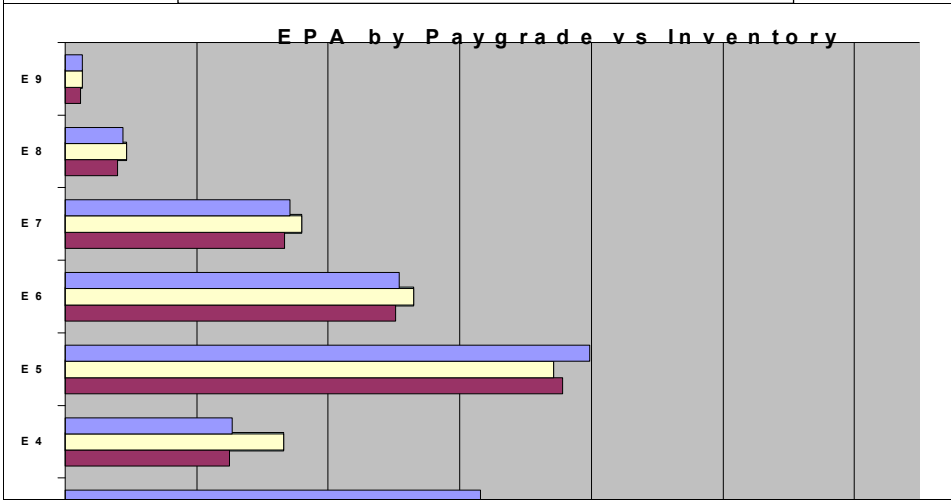
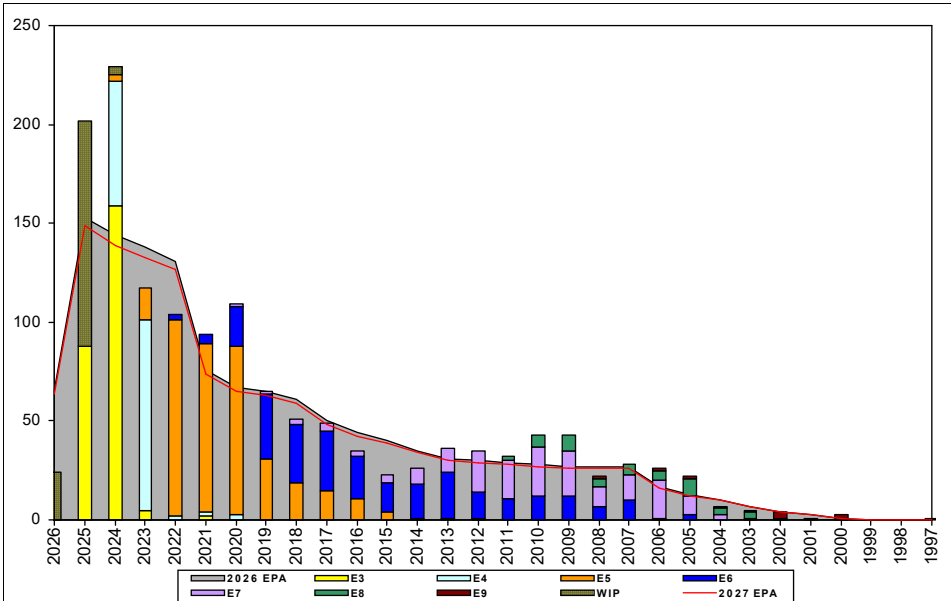


Fire Control Technician - C130



	E1-3	E4	E5	E6	E7	E8	E9	TOTAL
% INV to FY26 EPA	80%	131%	93%	104%	105%	107%	100%	98%
EPA (FY26)	316	127	399	254	171	44	13	1324
INVENTORY	254	166	371	265	180	47	13	1296
EPA (FY27)	308	125	378	251	167	40	12	1281
% INV to FY27 EPA	82%	133%	98%	106%	108%	118%	108%	101%
INV +WIP / FY26 EPA	125%							109%
INVENTORY	396	142	← E-3 and Below WIP					1438
INV +WIP / FY26 EPA	129%							112%

Sea Shore Flow		
TOUR	SEA	SHORE
1ST	54	36
2ND	42	36
3RD	36	36
4TH	36	36
5TH	36	36
6TH	36	36
7TH	36	36

FORCE STRUCTURE MANNING TO BA										
PG	SEA	INV	BA	SHORE	INV	BA	SEA + SHORE	TOTAL INV	TOTAL BA	
E1-3	95.1%	196	206	#Div/0!	6		98.1%	202	206	
E4	131.0%	152	116	200.0%	6	3	132.8%	158	119	
E5	89.5%	265	296	103.4%	92	89	92.7%	357	385	
E6	89.8%	106	118	114.5%	142	124	102.5%	248	242	
E7	98.9%	94	95	105.7%	74	70	101.8%	168	165	
E8	190.9%	21	11	81.3%	26	32	109.3%	47	43	
E9	66.7%	6	9	175.0%	7	4	100.0%	13	13	
Total	98.7%	840	851	109.6%	353	322	101.7%	1193	1173	

TIS to PG Years	Pay Grade	E1-E3	E4	E5	E6	E7	E8	E9
	ALL Navy	TIS	2.2	4.0	8.7	13.8	17.8	21.7
TIG to PG Years	FT	TIS	2.4	3.9	8.1	13.0	17.4	22.0
	ALL Navy	TIG	1.3	1.8	4.7	5.7	5.0	4.6
	FT	TIG	1.3	1.2	4.0	5.4	6.5	5.1

Zone Info	ZONE A	ZONE B	ZONE C	ZONE D	ZONE E	ALL ZONES
FY26 Manning:	102.0%	83.0%	81.0%	117.0%	93.0%	98.0%
FYTD RENL Rate:	75.8%	68.8%	90.0%	100.0%	25.0%	75.6%

NOTES

FT is designated an BALANCED rate in C-WAY
 Convert-in options are available
 ASVAB: PER Rating Requirements in CWAY
 SRB: Zone A 1.5 \$30k (SRB eligibility chart dated 10DEC25)
 SRB: Zone B 1.5 \$45k (SRB eligibility chart dated 10DEC25)
 SDIP available based on region for E4-E9
 See SDIP chart on mynavyhr.com (01-OCT-2025) for SDIP award levels.
 Selective Training and Reenlistment (STAR) program eligible.