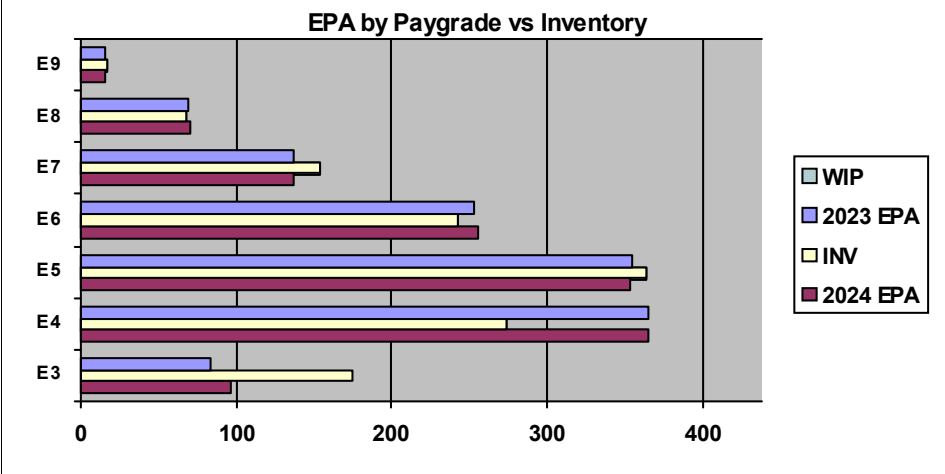
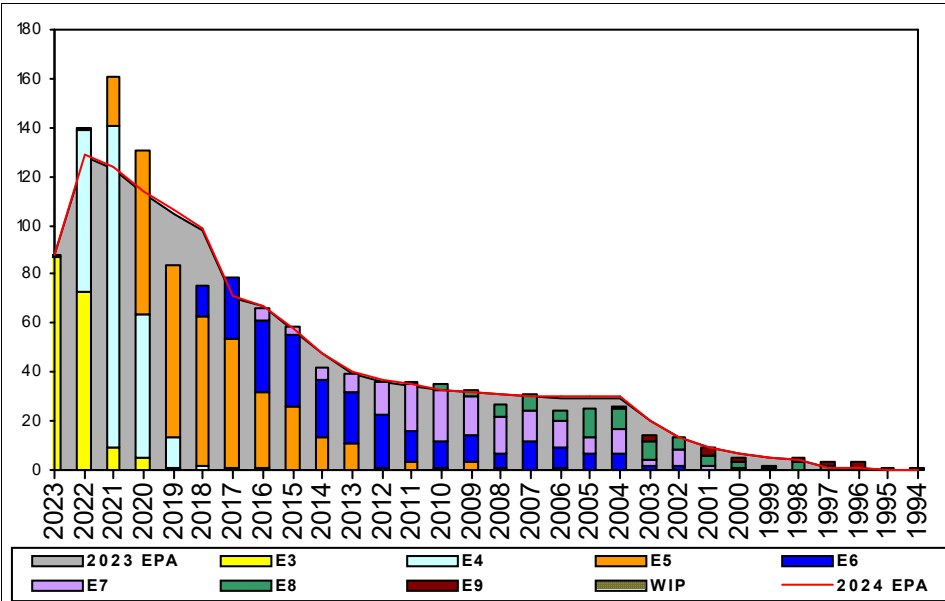


Missile Technician - C180



	E1-3	E4	E5	E6	E7	E8	E9	TOTAL
% INV to FY23 EPA	208%	75%	103%	96%	112%	99%	106%	101%
EPA (FY23)	84	365	355	253	137	69	16	1279
INVENTORY	175	274	364	242	154	68	17	1294
EPA (FY24)	97	365	353	255	137	70	15	1292
% INV to FY24 EPA	180%	75%	103%	95%	112%	97%	113%	100%
INV +WIP / FY23 EPA								
INVENTORY			← E-3 and Below WIP					
INV +WIP / FY24 EPA								

Sea Shore Flow		
TOUR	SEA	SHORE
1ST	48	36
2ND	42	36
3RD	36	36
4TH	30	30
5TH	30	30
6TH	30	30
7TH	30	30

FORCE STRUCTURE MANNING TO BA										
PG	SEA	INV	BA	SHORE	INV	BA	SEA + SHORE	TOTAL INV	TOTAL BA	
E1-3	#Div/0!	39					#Div/0!	39		
E4	70.6%	226	320	66.7%	8	12	70.5%	234	332	
E5	121.8%	229	188	75.8%	116	153	101.2%	345	341	
E6	79.5%	97	122	106.7%	128	120	93.0%	225	242	
E7	112.2%	55	49	113.1%	95	84	112.8%	150	133	
E8	121.4%	34	28	79.5%	31	39	97.0%	65	67	
E9	83.3%	5	6	150.0%	12	8	121.4%	17	14	
Total	96.1%	685	713	93.8%	390	416	95.2%	1075	1129	

ADV OPP. (Cycles 253/254/256)							
Pay Grade	E1-3	E4	E5	E6	E7	E8	E9
All-Navy	TIR	26.0%	16.9%	7.53%	26.6%	12.9%	15.6%
MT	TIR	100.0%	21.8%	6.8%	41.3%	26.2%	13.8%

Zone Info	ZONE A	ZONE B	ZONE C	ZONE D	ZONE E	ALL ZONES
FY23 Manning:	106.0%	96.0%	103.0%	92.0%	93.0%	101.0%
FYTD RENL Rate:	72.3%	65.3%	100.0%	100.0%	15.2%	65.9%
FY24 Manning:	105.0%	95.0%	101.0%	91.0%	93.0%	100.2%

NOTES

MT is designated a COMPETITIVE rate in CWAY
 Convert-in options are available.
 ASVAB: PER Rating Requirements in CWAY
 Must be pre-screened for PRP IAW MPM 1300-320
 SSBI Required
 SRB: Zone A 1.5 \$30k (SRB eligibility chart dated 18APR23)
 SRB: Zone B 1.0 \$30k (SRB eligibility chart dated 18APR23)
 SDIP: E4/E5/E6 \$800 (SDIP eligibility chart dated 08AUG23)
 SDIP: E-7 \$500 (SDIP eligibility chart dated 08AUG23)
 SDIP: E-8 \$600 (SDIP eligibility chart dated 08AUG23)
 SDIP: E-9 \$700 (SDIP eligibility chart dated 08AUG23)
 Selective Training and Reenlistment (STAR) program eligible.