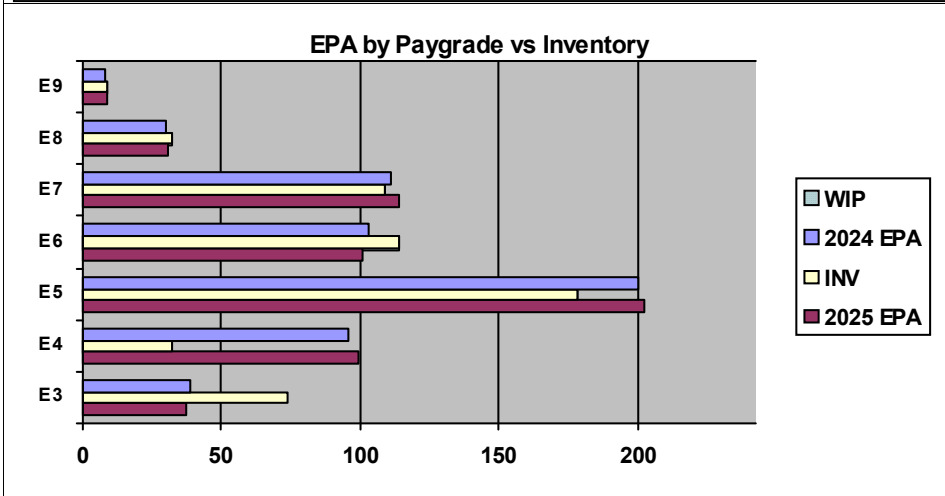
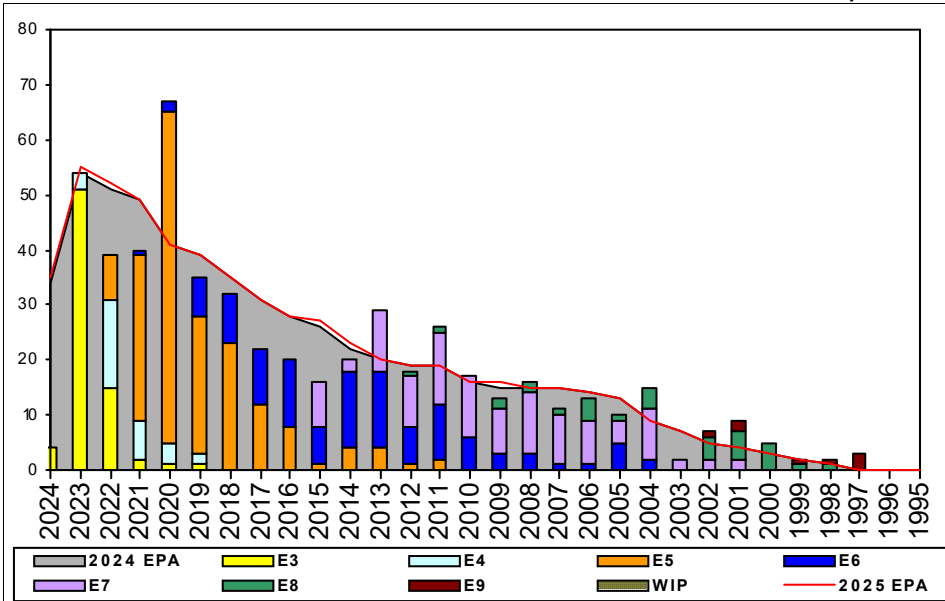


# Yeoman, Submarine - C250



	E1-3	E4	E5	E6	E7	E8	E9	TOTAL
<b>% INV to FY24 EPA</b>	<b>190%</b>	<b>33%</b>	<b>89%</b>	<b>111%</b>	<b>98%</b>	<b>107%</b>	<b>113%</b>	<b>93%</b>
<b>EPA (FY24)</b>	39	96	200	103	111	30	8	587
<b>INVENTORY</b>	74	32	178	114	109	32	9	548
<b>EPA (FY25)</b>	37	99	202	101	114	31	9	593
<b>% INV to FY25 EPA</b>	<b>200%</b>	<b>32%</b>	<b>88%</b>	<b>113%</b>	<b>96%</b>	<b>103%</b>	<b>100%</b>	<b>92%</b>
<b>INV +WIP / FY24 EPA</b>								
<b>INVENTORY</b>			← E-3 and Below WIP					
<b>INV +WIP / FY25 EPA</b>								

Sea Shore Flow		
TOUR	SEA	SHORE
1ST	36	36
2ND	36	36
3RD	36	36
4TH	36	36
5TH	36	36
6TH	36	36
7TH	36	36

FORCE STRUCTURE MANNING TO BA										
PG	SEA	INV	BA	SHORE	INV	BA	SEA + SHORE	TOTAL INV	TOTAL BA	
<b>E1-3</b>	195.2%	41	21	#Div/0!	1		200.0%	42	21	
<b>E4</b>	40.3%	29	72	8.7%	2	23	32.6%	31	95	
<b>E5</b>	88.9%	88	99	84.2%	80	95	86.6%	168	194	
<b>E6</b>	200.0%	54	27	75.7%	56	74	108.9%	110	101	
<b>E7</b>	69.2%	54	78	182.8%	53	29	100.0%	107	107	
<b>E8</b>	550.0%	11	2	76.9%	20	26	110.7%	31	28	
<b>E9</b>	166.7%	5	3	66.7%	4	6	100.0%	9	9	
<b>Total</b>	<b>93.4%</b>	<b>282</b>	<b>302</b>	<b>85.4%</b>	<b>216</b>	<b>253</b>	<b>89.7%</b>	<b>498</b>	<b>555</b>	

### ADV OPP. (Cycles 257/258/260)

Pay Grade	E1-3	E4	E5	E6	E7	E8	E9
<b>All-Navy</b>	TIR	45.0%	29.0%	9.0%	28.8%	16.8%	21.0%
<b>YNS</b>	TIR	36.6%	44.4%	13.6%	100.0%	20.0%	25.0%

### Zone Info

	ZONE A	ZONE B	ZONE C	ZONE D	ZONE E	ALL ZONES
<b>FY24 Manning:</b>	<b>95.0%</b>	<b>69.0%</b>	<b>115.0%</b>	<b>92.0%</b>	<b>119.0%</b>	<b>93.0%</b>
<b>FYTD RENL Rate:</b>	92.3%	75.0%	86.7%	100.0%	60.0%	88.0%
<b>FY25 Manning:</b>	<b>94.0%</b>	<b>69.0%</b>	<b>114.0%</b>	<b>91.0%</b>	<b>119.0%</b>	<b>92.4%</b>

### NOTES

YNS is designated an OPEN rate in CWAY  
 Convert-in options are available  
 ASVAB: PER Rating Requirements in CWAY  
 SRB: Zone B 2.0 \$30k (SRB eligibility chart dated 12APR24)  
 SRB: (840A) Zone B 1.5 \$45k (SRB eligibility chart dated 12APR24)  
 SDIP: E-5 \$500 (SDIP eligibility chart dated 07FEB24)  
 SDIP: E-7 \$500 (SDIP eligibility chart dated 07FEB24)  
 SDIP: E-8 \$600 (SDIP eligibility chart dated 07FEB24)  
 SDIP: E-9 \$700 (SDIP eligibility chart dated 07FEB24)  
 Selective Training and Reenlistment (STAR) program eligible.