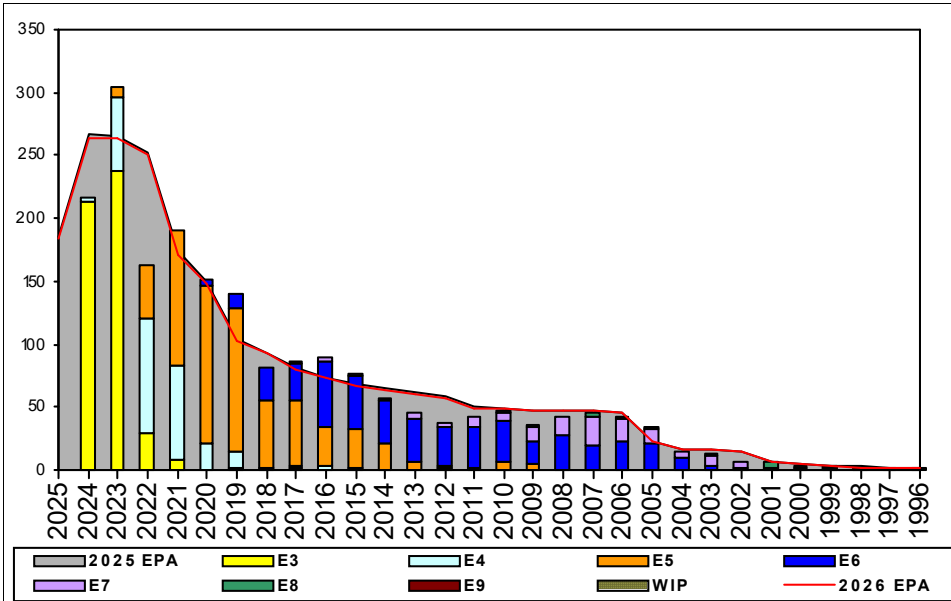


Interior Comm Electrician - B230

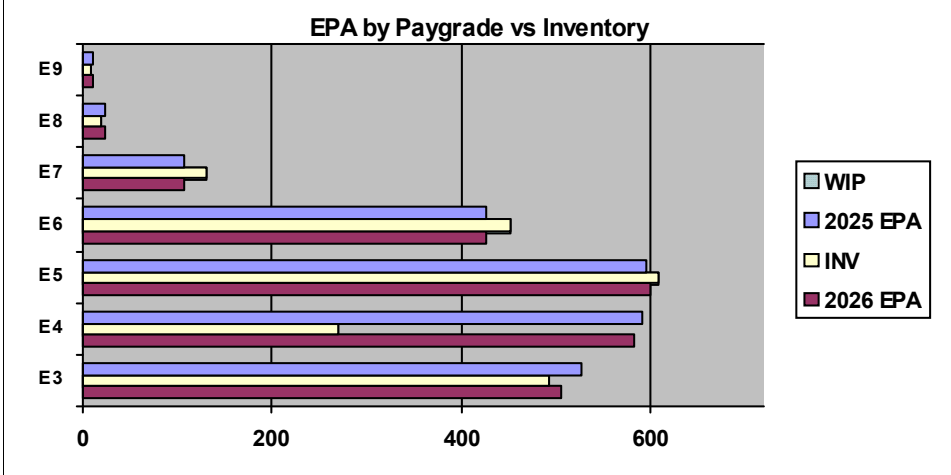


Sea Shore Flow		
TOUR	SEA	SHORE
1ST	60	36
2ND	60	36
3RD	48	36
4TH	48	36
5TH	36	36
6TH	36	36
7TH	36	36

FORCE STRUCTURE MANNING TO BA										
PG	SEA	INV	BA	SHORE	INV	BA	SEA + SHORE	TOTAL INV	TOTAL BA	
E1-3	68.5%	226	330	58.3%	7	12	68.1%	233	342	
E4	43.7%	226	517	50.0%	24	48	44.2%	250	565	
E5	116.2%	395	340	80.3%	183	228	101.8%	578	568	
E6	69.8%	183	262	167.6%	238	142	104.2%	421	404	
E7	152.8%	55	36	109.2%	71	65	124.8%	126	101	
E8	50.0%	5	10	140.0%	14	10	95.0%	19	20	
E9	75.0%	3	4	83.3%	5	6	80.0%	8	10	
Total	72.9%	1093	1499	106.1%	542	511	81.3%	1635	2010	

ADV OPP. (Cycles 261/262/263)

Pay Grade	E1-3	E4	E5	E6	E7	E8	E9
All-Navy	TIR	TIR	21.19	10.95%	31.44%	21.60%	22.32%
IC	TIR	45.9%	26.9%	11.3%	20.0%	32.0%	55.6%



Zone Info

	ZONE A	ZONE B	ZONE C	ZONE D	ZONE E	ALL ZONES
FY25 Manning:	88.0%	97.0%	73.0%	86.0%	67.0%	87.0%
FYTD RENL Rate:	43.8%	70.6%	83.3%	100.0%	50.0%	58.3%
FY26 Manning:	89.0%	98.0%	74.0%	87.0%	68.0%	87.8%

NOTES

IF A SAILOR DESIRES TO RE-ENLIST AND DOES NOT HAVE A REENLISTMENT QUOTA, PLEASE CONTACT THE ENLISTED COMMUNITY MANAGER TO DISCUSS OPTIONS.

Convert in opportunities for PACT Sailors YG 2020, 2021, and 2022.

Rating conversions will be considered on a case-by-case basis.

	E1-3	E4	E5	E6	E7	E8	E9	TOTAL
% INV to FY25 EPA	93%	46%	102%	106%	121%	83%	90%	87%
EPA (FY25)	527	592	596	426	107	23	10	2281
INVENTORY	492	270	608	452	130	19	9	1980
EPA (FY26)	505	583	599	427	107	23	10	2254
% INV to FY26 EPA	93%	46%	102%	106%	121%	83%	90%	88%
INV +WIP / FY25 EPA	94%							87%
INVENTORY	493	1 ← E-3 and Below WIP						1981
INV +WIP / FY26 EPA	98%							88%