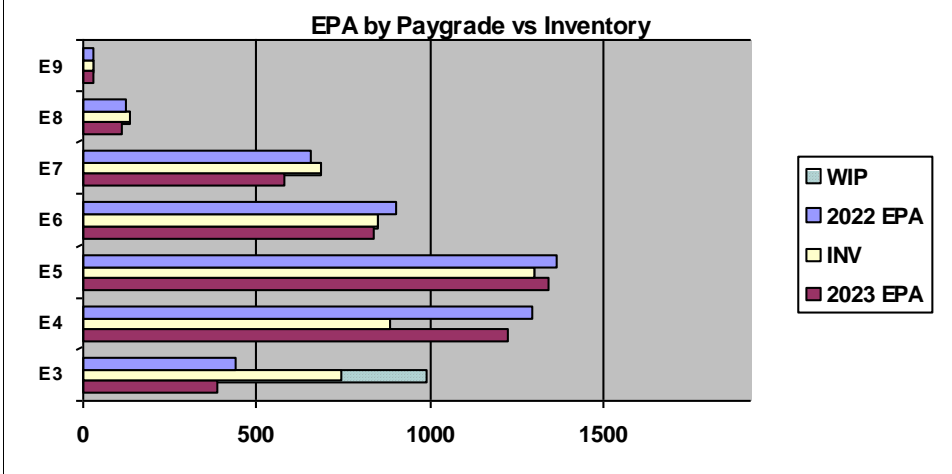
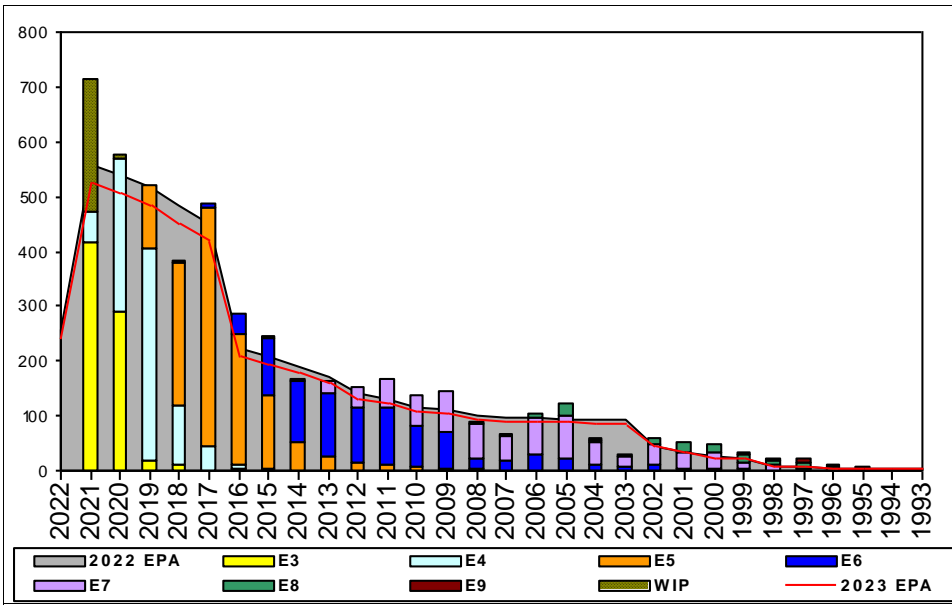


Fire Controlman - B310



	E1-3	E4	E5	E6	E7	E8	E9	TOTAL
% INV to FY22 EPA	169%	68%	95%	94%	104%	113%	100%	96%
EPA (FY22)	441	1297	1363	904	657	121	31	4814
INVENTORY	746	888	1300	852	684	137	31	4638
EPA (FY23)	386	1225	1342	836	581	110	31	4511
% INV to FY23 EPA	169%	68%	95%	94%	104%	113%	100%	103%
INV + WIP / FY22 EPA	224%							101%
INVENTORY	990	244 ← E-3 and Below WIP						4882
INV + WIP / FY23 EPA	256%							108%

Sea Shore Flow			FORCE STRUCTURE MANNING TO BA									
TOUR	SEA	SHORE	PG	SEA	INV	BA	SHORE	INV	BA	SEA + SHORE	TOTAL INV	TOTAL BA
1ST	51	36	E1-3	#####	63	1	0.0%	15		#####	78	1
2ND	48	36	E4	60.3%	639	1059	250.0%	40	16	63.2%	679	1075
3RD	36	36	E5	116.9%	1015	868	48.9%	228	466	93.2%	1243	1334
4TH	36	36	E6	64.0%	316	494	119.0%	482	405	88.8%	798	899
5TH	36	36	E7	81.8%	305	373	132.3%	344	260	102.5%	649	633
6TH	36	36	E8	91.2%	62	68	134.0%	71	53	109.9%	133	121
7TH	36	36	E9	100.0%	17	17	92.9%	13	14	96.8%	30	31
Total				83.9%	2417	2880	98.3%	1193	1214	88.2%	3610	4094

ADV OPP. (Cycles 245/246/247)							
All-Navy 10yr Avg	E1-3	E4	E5	E6	E7	E8	E9
TIR		34.9%	22.1%	13.9%	22.0%	11.6%	13.1%
All-Navy	TIR	28.3%	20.8%	8.1%	25.9%	13.6%	12.3%
FC	TIR	100.0%	55.0%	14.7%	56.4%	10.1%	13.8%

Zone Info	ZONE A	ZONE B	ZONE C	ZONE D	ZONE E	ALL ZONES
FY22 Manning:	95.0%	95.0%	113.0%	77.0%	137.0%	96.0%
FYTD RENL Rate:	62.5%	71.4%	100.0%	100.0%	18.2%	69.0%
FY23 Manning:	102.0%	102.0%	120.0%	82.0%	146.0%	102.8%

NOTES

The community health, SRB, and other helpful links are updated monthly – ensure you are visiting the Community Management pages on MyNavyHR to ensure you have the most up-to-date information.

ADVANCEMENT – At or above the Navy average for E4-E7, and E9

Career Waypoint / My Navy Assignments information:
 -This is NOT a PACT rating.
 -Convert-in opportunities are NOT AVAILABLE.
 -Convert-out opportunities are available on a very limited, case-by-case basis.

****IF A SAILOR WHO DESIRES TO RE-ENLIST AND DOES NOT HAVE A RE-ENLISTMENT QUOTA, PLEASE CONTACT THE ENLISTED COMMUNITY MANAGER TO DISCUSS OPTIONS.****