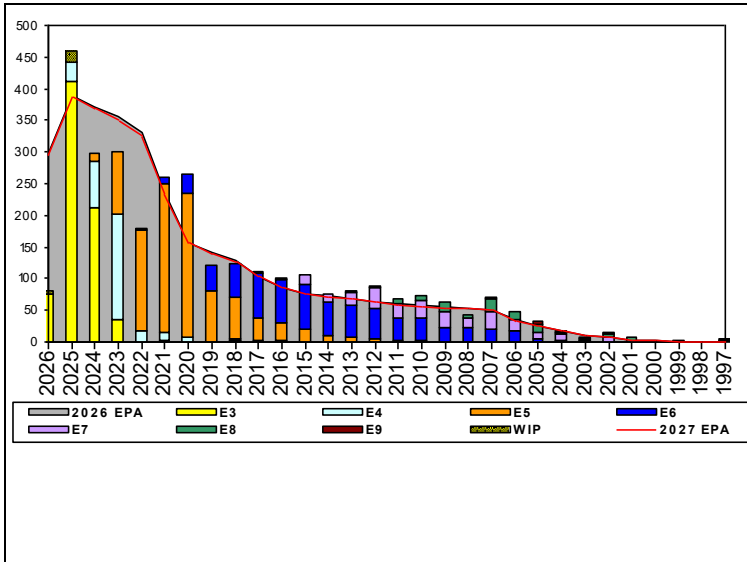


Sonar Technician, Surface - B340



Sea Shore Flow

TOUR	SEA	SHORE
1ST	50	36
2ND	60	36
3RD	48	36
4TH	48	36
5TH	36	36
6TH	36	36
7TH	36	36

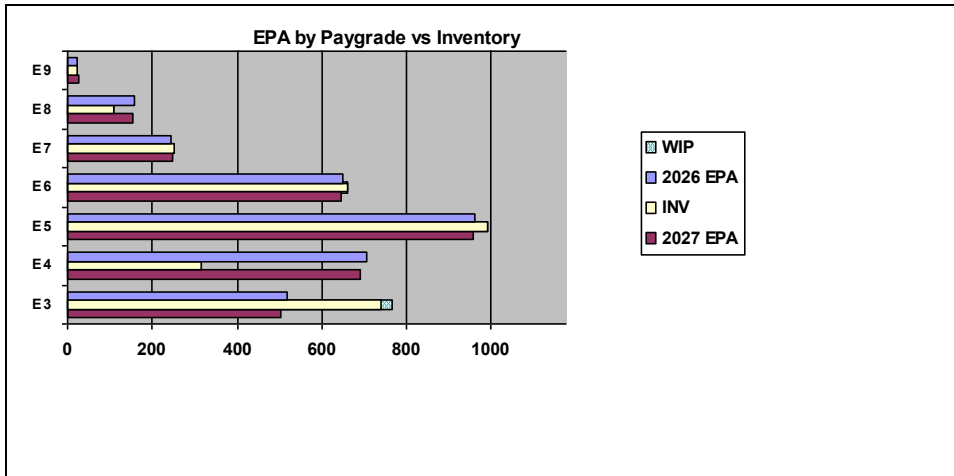
FORCE STRUCTURE MANNING TO BA

PG	SEA	INV	BA	SHORE	INV	BA	SEA + SHORE	TOTAL INV	TOTAL BA
E1-3	119.2%	378	317	#Div/0!	27		127.8%	405	317
E4	42.9%	228	531	39.0%	30	77	42.4%	258	608
E5	114.2%	628	550	88.1%	297	337	104.3%	925	887
E6	118.5%	320	270	98.7%	300	304	108.0%	620	574
E7	164.8%	89	54	79.8%	138	173	100.0%	227	227
E8	68.3%	56	82	77.3%	51	66	72.3%	107	148
E9	80.0%	8	10	100.0%	13	13	91.3%	21	23
Total	94.1%	1707	1814	88.2%	856	970	92.1%	2563	2784

TIS to PG Years

Pay Grade	E1-E3	E4	E5	E6	E7	E8	E9
ALL Navy	TIS	2.2	4.0	8.7	13.8	17.8	21.7
STG	TIS	1.8	3.9	8.0	13.2	16.5	20.9
ALL Navy	TIG	1.3	1.8	4.6	5.7	5.0	4.6
STG	TIG	1.0	2.1	4.5	5.6	4.1	5.7

TIG to PG Years



Zone Info

	ZONE A	ZONE B	ZONE C	ZONE D	ZONE E	ALL ZONES
FY26 Manning:	88.0%	92.0%	118.0%	117.0%	103.0%	95.0%
FYTD RENL Rate:	61.0%	60.4%	67.5%	95.8%	29.9%	62.3%

NOTES

Conversions: Submittal are 13-18 Months from PRD.

Retirements: Should match SEAOS/PRD or extraordinary circumstances.

SEM/BBA: These programs are advancement opportunities program not an advancement guarantee, apply early and often to stay competitive.

ECM/TECAD: ETCM Parsons, Seth A. "Casper"

	E1-3	E4	E5	E6	E7	E8	E9	TOTAL
% INV to FY26 EPA	143%	45%	103%	102%	102%	70%	91%	95%
EPA (FY26)	519	706	959	650	245	156	23	3258
INVENTORY	741	316	991	662	251	109	21	3091
EPA (FY27)	503	689	956	647	246	154	25	3220
% INV to FY27 EPA	147%	46%	104%	102%	102%	71%	84%	96%
INV +WIP / FY26 EPA	147%							96%
INVENTORY	764	23 ← E-3 and Below WIP						3114
INV +WIP / FY26 EPA	152%							97%