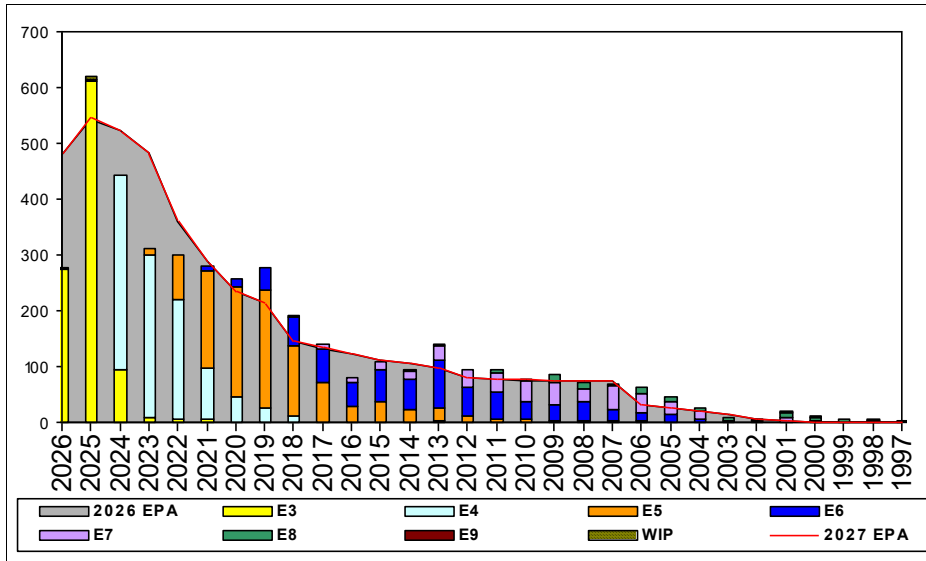


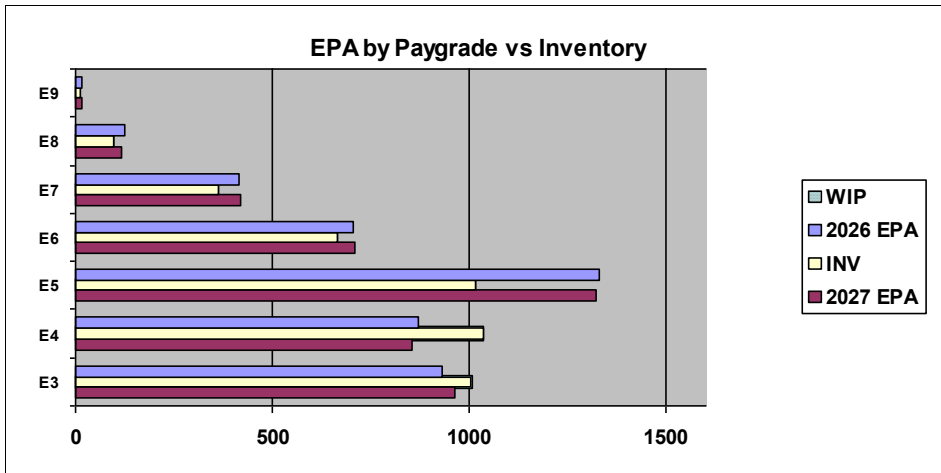
# Electrician's Mate - B210



Sea Shore Flow		
TOUR	SEA	SHORE
1ST	53	36
2ND	60	36
3RD	48	36
4TH	48	36
5TH	36	36
6TH	36	36
7TH	36	36

FORCE STRUCTURE MANNING TO BA										
PG	SEA	INV	BA	SHORE	INV	BA	SEA + SHORE	TOTAL INV	TOTAL BA	
E1-3	92.9%	521	561	114.3%	32	28	93.9%	553	589	
E4	104.3%	857	822	134.0%	134	100	107.5%	991	922	
E5	58.0%	488	842	100.7%	443	440	72.6%	931	1282	
E6	88.3%	331	375	94.8%	293	309	91.2%	624	684	
E7	88.3%	173	196	84.1%	169	201	86.1%	342	397	
E8	55.8%	48	86	110.0%	44	40	73.0%	92	126	
E9	100.0%	5	5	75.0%	9	12	82.4%	14	17	
<b>Total</b>	<b>83.9%</b>	<b>2423</b>	<b>2887</b>	<b>99.5%</b>	<b>1124</b>	<b>1130</b>	<b>88.3%</b>	<b>3547</b>	<b>4017</b>	

TIS to PG Years	Pay Grade	E1-E3	E4	E5	E6	E7	E8	E9
	ALL Navy	TIS		2.2	4.0	8.7	13.8	17.8
TIG to PG Years	EM	TIS	2.5	4.2	8.6	13.2	17.6	24.4
	ALL Navy	TIG	1.3	1.8	4.6	5.7	5.0	4.6
	EM	TIG	1.3	1.9	4.4	5.2	5.2	5.7



Zone Info	ZONE A	ZONE B	ZONE C	ZONE D	ZONE E	ALL ZONES
FY26 Manning:	87.0%	107.0%	104.0%	108.0%	145.0%	95.0%
FYTD RENL Rate:	71.5%	57.7%	84.8%	100.0%	20.4%	67.1%

## NOTES

Convert-in opportunities can be viewed from MNA landing page.  
 Convert-outs are adjudicated based on a case by case basis off overall community health and manning.

Conversion window is 18-13 months from PRD.

This PACT rating is currently unavailable.

\*\*\*SRB\*\*\*

NEC 0000 Zone A  
 NEC U35A Zone B  
 NEC U58A Zone B and C

\*\*\*SDIP\*\*\*

-EM E5  
 -EM E8 E9 N32Z

For questions feel free to reach out [maya.m.gengenbacher.mil@us.navy.mil](mailto:maya.m.gengenbacher.mil@us.navy.mil)

	E1-3	E4	E5	E6	E7	E8	E9	TOTAL
% INV to FY26 EPA	108%	119%	76%	94%	88%	78%	88%	95%
EPA (FY26)	933	872	1332	707	414	124	16	4398
INVENTORY	1004	1038	1017	667	363	97	14	4200
EPA (FY27)	963	854	1325	711	421	117	17	4408
% INV to FY27 EPA	104%	122%	77%	94%	86%	83%	82%	95%
INV + WIP / FY26 EPA	108%							96%
INVENTORY	1011	7 ← E-3 and Below WIP						4207
INV + WIP / FY26 EPA	105%							95%