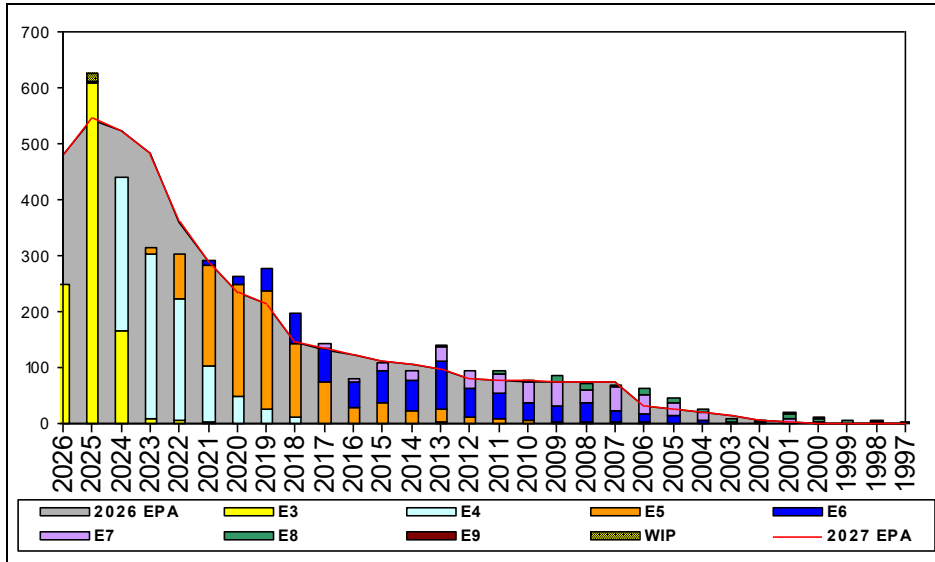


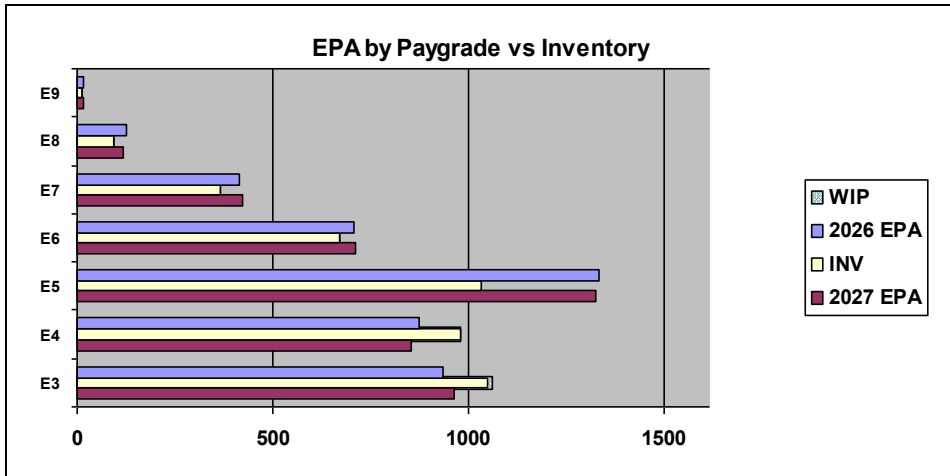
# Electrician's Mate - B210



Sea Shore Flow		
TOUR	SEA	SHORE
1ST	53	36
2ND	60	36
3RD	48	36
4TH	48	36
5TH	36	36
6TH	36	36
7TH	36	36

FORCE STRUCTURE MANNING TO BA										
PG	SEA	INV	BA	SHORE	INV	BA	SEA + SHORE	TOTAL INV	TOTAL BA	
E1-3	96.4%	541	561	135.7%	38	28	98.3%	579	589	
E4	97.3%	800	822	125.0%	125	100	100.3%	925	922	
E5	59.5%	501	842	103.6%	456	440	74.6%	957	1282	
E6	87.5%	328	375	96.1%	297	309	91.4%	625	684	
E7	91.3%	179	196	85.1%	171	201	88.2%	350	397	
E8	53.5%	46	86	115.0%	46	40	73.0%	92	126	
E9	100.0%	5	5	75.0%	9	12	82.4%	14	17	
<b>Total</b>	<b>83.1%</b>	<b>2400</b>	<b>2887</b>	<b>101.1%</b>	<b>1142</b>	<b>1130</b>	<b>88.2%</b>	<b>3542</b>	<b>4017</b>	

TIS to PG Years	Pay Grade	E1-E3	E4	E5	E6	E7	E8	E9
	ALL Navy	TIS	2.2	4.0	8.7	13.8	17.9	21.8
TIG to PG Years	EM	TIS	2.5	4.2	8.6	13.2	17.7	24.4
	ALL Navy	TIG	1.3	1.8	4.6	5.7	5.0	4.6
	EM	TIG	1.3	1.9	4.4	5.2	5.2	5.7



Zone Info	ZONE A	ZONE B	ZONE C	ZONE D	ZONE E	ALL ZONES
FY26 Manning:	87.0%	109.0%	105.0%	107.0%	143.0%	96.0%
FYTD RENL Rate:	61.1%	57.6%	87.7%	99.1%	24.7%	64.2%

## NOTES

Convert-in opportunities can be viewed from MNA landing page.  
 Convert-outs are adjudicated based on a case by case basis off overall community health and manning.  
 Conversion window is 18-13 months from PRD.  
 This PACT rating is currently unavailable.

\*\*\*SRB\*\*\*  
 NEC 0000 Zone A  
 NEC U35A Zone B  
 NEC U58A Zone B and C

\*\*\*\*SDIP\*\*\*  
 -EM E5  
 -EM E8 E9 N32Z

For questions feel free to reach out [maya.m.gengenbacher.mil@us.navy.mil](mailto:maya.m.gengenbacher.mil@us.navy.mil)

	E1-3	E4	E5	E6	E7	E8	E9	TOTAL
% INV to FY26 EPA	112%	112%	78%	95%	89%	77%	88%	96%
EPA (FY26)	933	872	1332	707	414	124	16	4398
INVENTORY	1046	977	1033	671	367	95	14	4203
EPA (FY27)	963	854	1325	711	421	117	17	4408
% INV to FY27 EPA	109%	114%	78%	94%	87%	81%	82%	95%
INV + WIP / FY26 EPA	114%							96%
INVENTORY	1061	15 ← E-3 and Below WIP						4218
INV + WIP / FY26 EPA	110%							96%