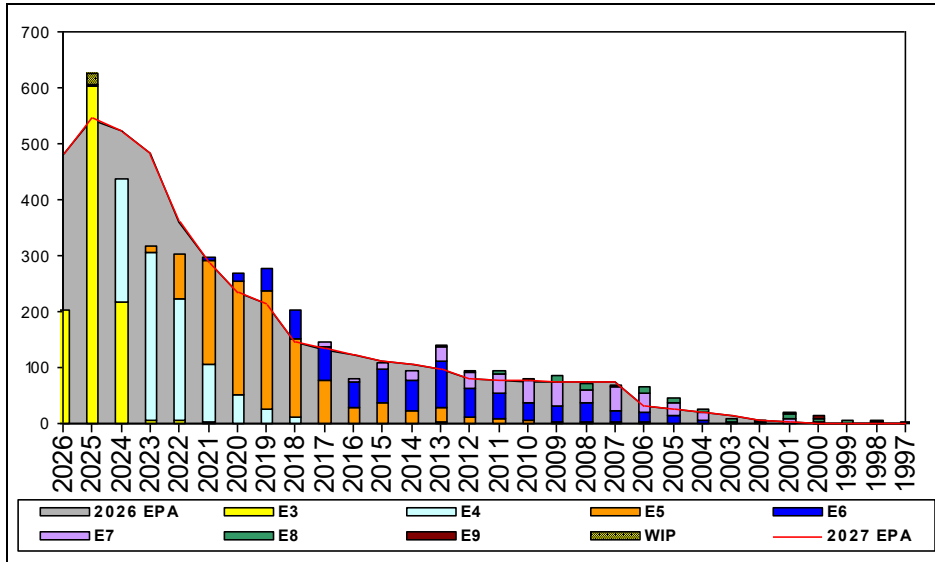


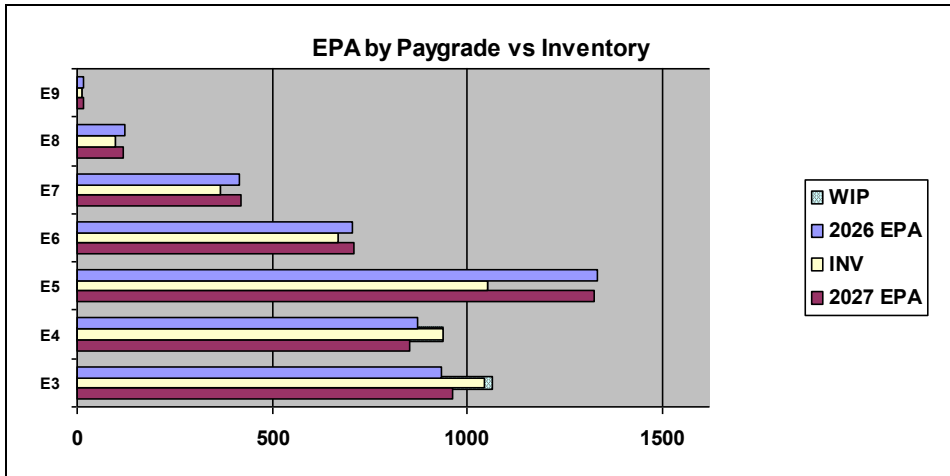
# Electrician's Mate - B210



Sea Shore Flow		
TOUR	SEA	SHORE
1ST	53	36
2ND	60	36
3RD	48	36
4TH	48	36
5TH	36	36
6TH	36	36
7TH	36	36

FORCE STRUCTURE MANNING TO BA										
PG	SEA	INV	BA	SHORE	INV	BA	SEA + SHORE	TOTAL INV	TOTAL BA	
E1-3	98.2%	551	561	92.9%	26	28	98.0%	577	589	
E4	93.8%	771	822	125.0%	125	100	97.2%	896	922	
E5	61.3%	516	842	105.2%	462	439	76.3%	978	1281	
E6	88.0%	330	375	92.6%	287	310	90.1%	617	685	
E7	90.8%	178	196	84.1%	169	201	87.4%	347	397	
E8	54.7%	47	86	117.5%	47	40	74.6%	94	126	
E9	100.0%	5	5	75.0%	9	12	82.4%	14	17	
<b>Total</b>	<b>83.1%</b>	<b>2398</b>	<b>2887</b>	<b>99.6%</b>	<b>1125</b>	<b>1130</b>	<b>87.7%</b>	<b>3523</b>	<b>4017</b>	

TIS to PG Years	Pay Grade	E1-E3	E4	E5	E6	E7	E8	E9
	ALL Navy	TIS	2.2	4.0	8.7	13.8	17.8	21.7
TIG to PG Years	EM	TIS	2.5	4.2	8.6	13.1	17.7	24.4
	ALL Navy	TIG	1.3	1.8	4.6	5.7	5.0	4.6
	EM	TIG	1.3	1.9	4.4	5.2	5.2	5.7



Zone Info	ZONE A	ZONE B	ZONE C	ZONE D	ZONE E	ALL ZONES
FY26 Manning:	86.0%	109.0%	104.0%	107.0%	142.0%	95.0%
FYTD RENL Rate:	61.1%	57.6%	87.7%	99.1%	24.7%	64.2%

## NOTES

Convert-in opportunities can be viewed from MNA landing page.  
 Convert-outs are adjudicated on a case by case basis based off overall community health and manning.  
 Conversion window is 18-13 months from PRD.

This PACT rating is currently available.

\*\*\*SRB\*\*\*

NEC 0000 Zone A  
 NEC U35A Zone B  
 NEC U58A Zone B and C

\*\*\*SDIP\*\*\*

-EM E5  
 -EM E8 E9 N32Z

For questions feel free to reach out  
[maya.m.gengenbacher.mil@us.navy.mil](mailto:maya.m.gengenbacher.mil@us.navy.mil)

	E1-3	E4	E5	E6	E7	E8	E9	TOTAL
% INV to FY26 EPA	112%	107%	79%	95%	89%	77%	88%	95%
EPA (FY26)	933	872	1332	707	414	124	16	4398
INVENTORY	1042	937	1053	669	367	96	14	4178
EPA (FY27)	963	854	1325	711	421	117	17	4408
% INV to FY27 EPA	108%	110%	79%	94%	87%	82%	82%	95%
INV + WIP / FY26 EPA	114%							95%
INVENTORY	1062	20 ← E-3 and Below WIP						4198
INV + WIP / FY26 EPA	110%							95%