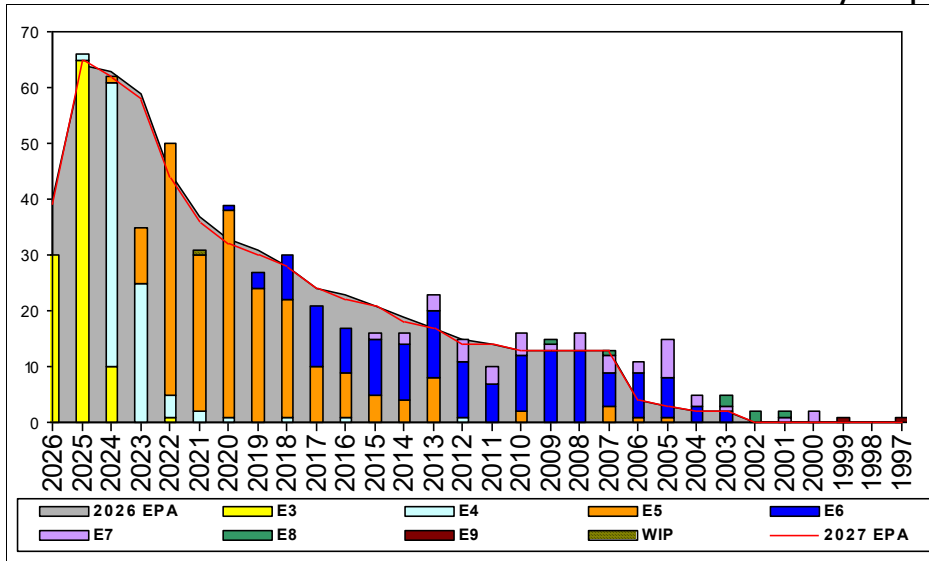


# Machinery Repairman - B250



## Sea Shore Flow

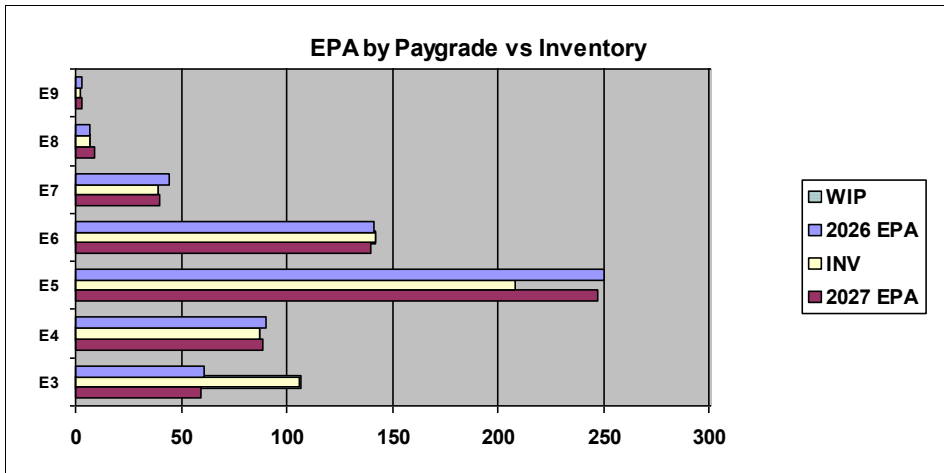
TOUR	SEA	SHORE
1ST	48	36
2ND	36	36
3RD	36	36
4TH	36	36
5TH	36	36
6TH	36	36
7TH	36	36

## FORCE STRUCTURE MANNING TO BA

PG	SEA	INV	BA	SHORE	INV	BA	SEA + SHORE	TOTAL INV	TOTAL BA
<b>E1-3</b>	134.6%	35	26	466.7%	14	3	169.0%	49	29
<b>E4</b>	145.2%	61	42	78.8%	26	33	116.0%	87	75
<b>E5</b>	65.8%	98	149	108.0%	95	88	81.4%	193	237
<b>E6</b>	132.1%	70	53	84.8%	67	79	103.8%	137	132
<b>E7</b>	78.6%	11	14	86.2%	25	29	83.7%	36	43
<b>E8</b>	50.0%	3	6	400.0%	4	1	100.0%	7	7
<b>E9</b>	50.0%	1	2	100.0%	1	1	66.7%	2	3
<b>Total</b>	95.5%	279	292	99.1%	232	234	97.1%	511	526

## TIS to PG Years

Pay Grade	E1-E3	E4	E5	E6	E7	E8	E9
<b>ALL Navy</b>	TIS	2.2	4.0	8.7	13.8	17.8	21.8
<b>MR</b>	TIS	2.5	3.5	8.8	14.3	20.0	25.0
<b>TIG to PG Years</b>	TIG	1.3	1.8	4.6	5.7	5.0	4.6
<b>MR</b>	TIG	1.1	1.2	5.0	6.3	7.3	4.5



## Zone Info

	ZONE A	ZONE B	ZONE C	ZONE D	ZONE E	ALL ZONES
<b>FY26 Manning:</b>	94.0%	90.0%	92.0%	107.0%	345.0%	99.0%
<b>FYTD RENL Rate:</b>	80.0%	70.0%	87.5%	100.0%	18.2%	74.0%

## NOTES

Convert-in opportunities can be viewed from MNA landing page.  
Convert-outs are adjudicated based on a case by case basis off overall community health and manning.

Conversion window is 18-13 months from PRD.

This PACT rating is currently unavailable.

\*\*\*SRB\*\*\*  
NEC 0000 Zone A and B

\*\*\*SDIP\*\*\*  
-MR E5 and E6

For questions feel free to reach out [maya.m.gengenbacher.mil@us.navy.mil](mailto:maya.m.gengenbacher.mil@us.navy.mil)

	E1-3	E4	E5	E6	E7	E8	E9	TOTAL
<b>% INV to FY26 EPA</b>	174%	97%	83%	101%	89%	100%	67%	99%
<b>EPA (FY26)</b>	61	90	250	141	44	7	3	596
<b>INVENTORY</b>	106	87	208	142	39	7	2	591
<b>EPA (FY27)</b>	59	89	247	140	40	9	3	587
<b>% INV to FY27 EPA</b>	180%	98%	84%	101%	98%	78%	67%	101%
<b>INV + WIP / FY26 EPA</b>	175%							99%
<b>INVENTORY</b>	107	1 ← E-3 and Below WIP						592
<b>INV + WIP / FY26 EPA</b>	181%							101%