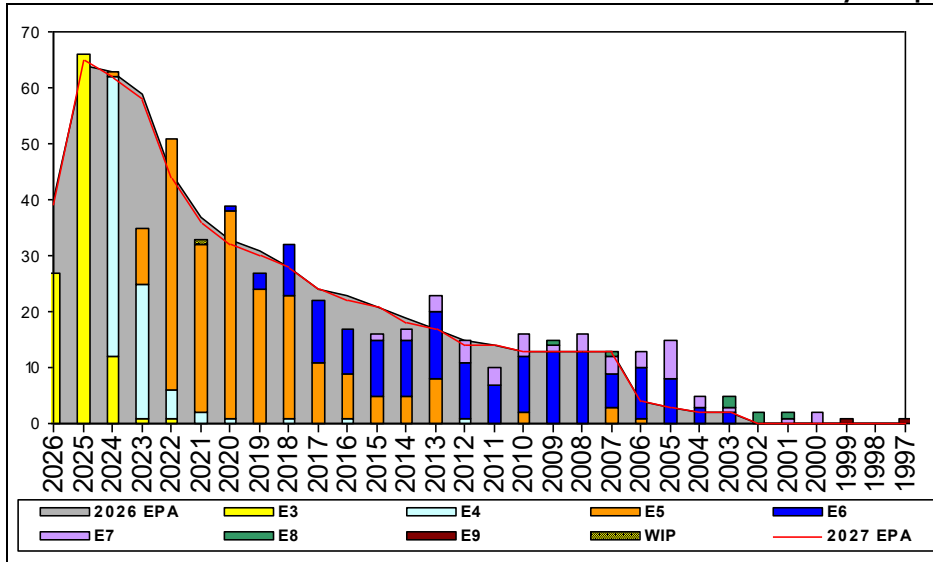


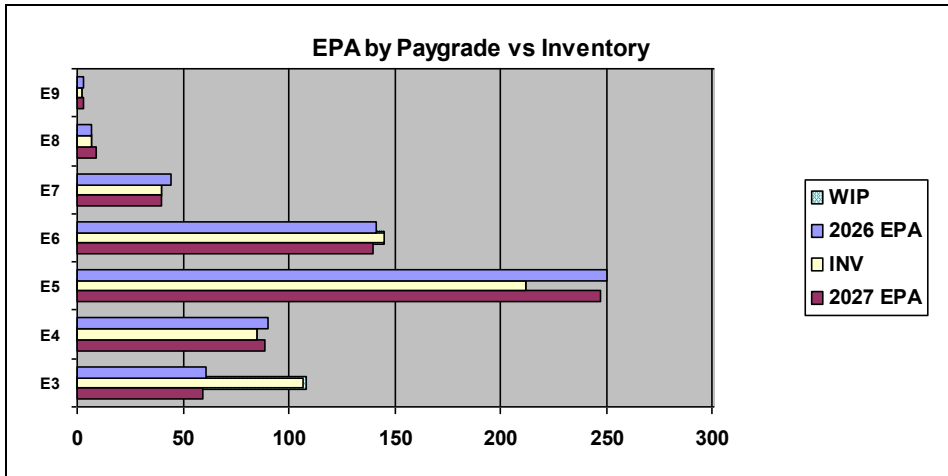
Machinery Repairman - B250



Sea Shore Flow		
TOUR	SEA	SHORE
1ST	48	36
2ND	36	36
3RD	36	36
4TH	36	36
5TH	36	36
6TH	36	36
7TH	36	36

FORCE STRUCTURE MANNING TO BA										
PG	SEA	INV	BA	SHORE	INV	BA	SEA + SHORE	TOTAL INV	TOTAL BA	
E1-3	138.5%	36	26	433.3%	13	3	169.0%	49	29	
E4	135.7%	57	42	78.8%	26	33	110.7%	83	75	
E5	68.5%	102	149	108.0%	95	88	83.1%	197	237	
E6	132.1%	70	53	88.6%	70	79	106.1%	140	132	
E7	78.6%	11	14	86.2%	25	29	83.7%	36	43	
E8	50.0%	3	6	400.0%	4	1	100.0%	7	7	
E9	50.0%	1	2	100.0%	1	1	66.7%	2	3	
Total	95.9%	280	292	100.0%	234	234	97.7%	514	526	

TIS to PG Years	Pay Grade	E1-E3	E4	E5	E6	E7	E8	E9
	ALL Navy	TIS	2.2	4.0	8.7	13.8	17.9	21.8
TIG to PG Years	MR	TIS	2.4	3.5	8.9	14.2	20.0	25.0
	ALL Navy	TIG	1.3	1.8	4.6	5.7	5.0	4.6
	MR	TIG	1.1	1.2	5.0	6.3	7.3	4.5



Zone Info	ZONE A	ZONE B	ZONE C	ZONE D	ZONE E	ALL ZONES
FY26 Manning:	95.0%	91.0%	98.0%	104.0%	355.0%	100.0%
FYTD RENL Rate:	66.1%	77.4%	71.4%	100.0%	30.0%	70.6%

NOTES

Convert-in opportunities can be viewed from MNA landing page.
 Convert-outs are adjudicated based on a case by case basis off overall community health and manning.

Conversion window is 18-13 months from PRD.

This PACT rating is currently unavailable.

SRB

NEC 0000 Zone A and B

SDIP

-MR E5 and E6

For questions feel free to reach out maya.m.gengenbacher.mil@us.navy.mil

	E1-3	E4	E5	E6	E7	E8	E9	TOTAL
% INV to FY26 EPA	175%	94%	85%	103%	91%	100%	67%	100%
EPA (FY26)	61	90	250	141	44	7	3	596
INVENTORY	107	85	212	145	40	7	2	598
EPA (FY27)	59	89	247	140	40	9	3	587
% INV to FY27 EPA	181%	96%	86%	104%	100%	78%	67%	102%
INV + WIP / FY26 EPA	177%							101%
INVENTORY	108	1 ← E-3 and Below WIP						599
INV + WIP / FY26 EPA	183%							102%