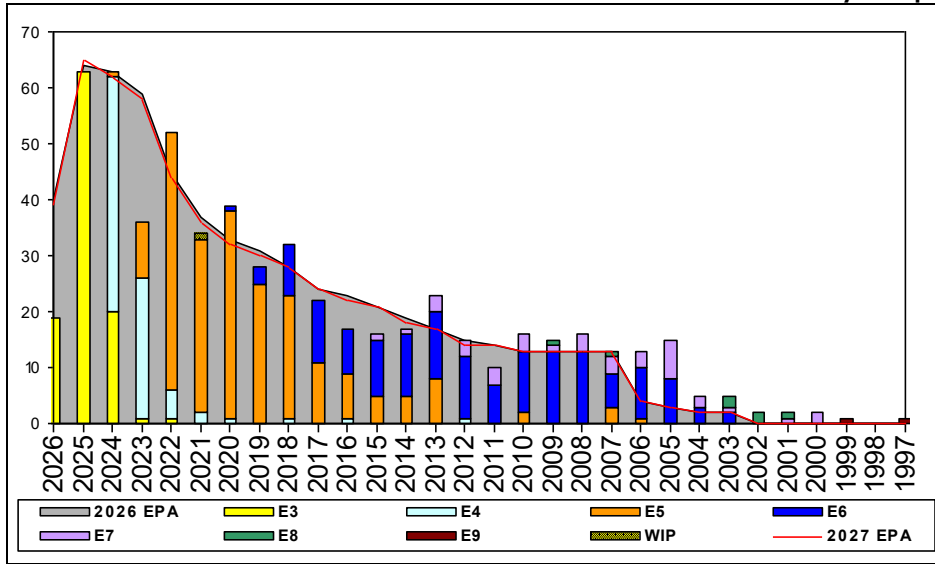


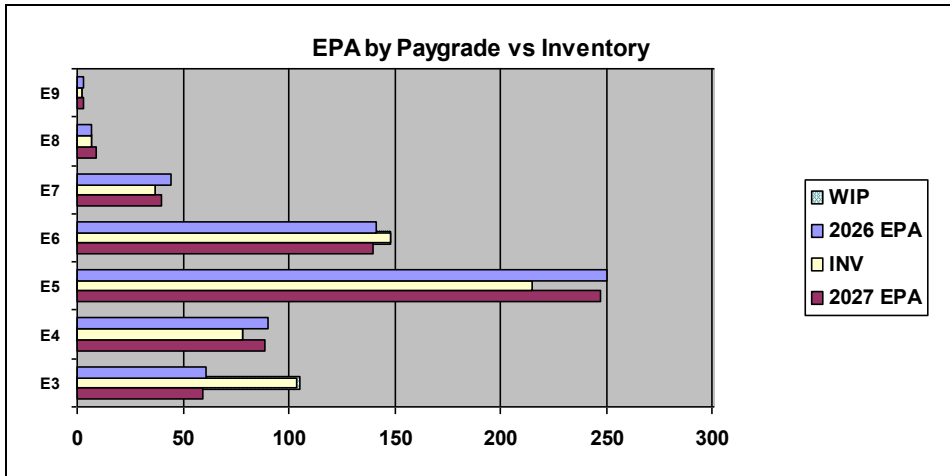
Machinery Repairman - B250



Sea Shore Flow		
TOUR	SEA	SHORE
1ST	48	36
2ND	36	36
3RD	36	36
4TH	36	36
5TH	36	36
6TH	36	36
7TH	36	36

FORCE STRUCTURE MANNING TO BA										
PG	SEA	INV	BA	SHORE	INV	BA	SEA + SHORE	TOTAL INV	TOTAL BA	
E1-3	130.8%	34	26	500.0%	15	3	169.0%	49	29	
E4	126.2%	53	42	69.7%	23	33	101.3%	76	75	
E5	71.1%	106	149	102.3%	90	88	82.7%	196	237	
E6	134.0%	71	53	88.6%	70	79	106.8%	141	132	
E7	71.4%	10	14	93.1%	27	29	86.0%	37	43	
E8	50.0%	3	6	400.0%	4	1	100.0%	7	7	
E9	50.0%	1	2	100.0%	1	1	66.7%	2	3	
Total	95.2%	278	292	98.3%	230	234	96.6%	508	526	

TIS to PG Years	Pay Grade	E1-E3	E4	E5	E6	E7	E8	E9
		ALL Navy	TIS	2.2	4.0	8.7	13.8	17.8
TIG to PG Years	MR	TIS	2.4	3.5	8.9	14.2	20.0	25.0
	ALL Navy	TIG	1.3	1.8	4.6	5.7	5.0	4.6
	MR	TIG	1.1	1.2	5.0	6.3	7.3	4.5



Zone Info	ZONE A	ZONE B	ZONE C	ZONE D	ZONE E	ALL ZONES
FY26 Manning:	93.0%	91.0%	98.0%	101.0%	355.0%	99.0%
FYTD RENL Rate:	66.1%	77.4%	71.4%	100.0%	30.0%	70.6%

NOTES

Convert-in opportunities can be viewed from MNA landing page.
 Convert-outs are adjudicated on a case by case basis based off overall community health and manning.
 Conversion window is 18-13 months from PRD.

This PACT rating is currently unavailable.

SRB
 NEC 0000 Zone A and B

SDIP
 -MR E5 and E6

For questions feel free to reach out
maya.m.gengenbacher.mil@us.navy.mil

	E1-3	E4	E5	E6	E7	E8	E9	TOTAL
% INV to FY26 EPA	170%	87%	86%	105%	84%	100%	67%	99%
EPA (FY26)	61	90	250	141	44	7	3	596
INVENTORY	104	78	215	148	37	7	2	591
EPA (FY27)	59	89	247	140	40	9	3	587
% INV to FY27 EPA	176%	88%	87%	106%	93%	78%	67%	101%
INV + WIP / FY26 EPA	172%							99%
INVENTORY	105	1 ← E-3 and Below WIP						592
INV + WIP / FY26 EPA	178%							101%