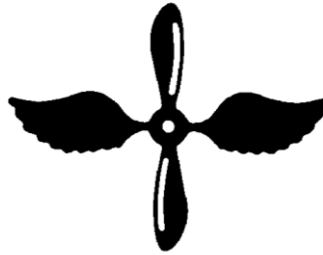


CHAPTER 3



AVIATION MACHINIST'S MATE (AD)

NAVPERS 18068F-3H
Change 103

Updated: July 2025

TABLE OF CONTENTS
AVIATION MACHINIST'S MATE (AD)

SCOPE OF RATING	AD-3
GENERAL INFORMATION	AD-4
AVIATION MACHINIST'S MATE ORGANIZATIONAL LEVEL	AD-5
AUXILIARY POWER SYSTEMS MAINTENANCE	AD-5
CORROSION CONTROL	AD-5
ENGINE SYSTEMS MAINTENANCE	AD-6
FUEL SYSTEMS MAINTENANCE	AD-7
HELICOPTER MAINTENANCE	AD-8
LINE MAINTENANCE	AD-8
MAINTENANCE ADMINISTRATION	AD-9
POWER PLANT MAINTENANCE	AD-9
PROPELLER SYSTEMS MAINTENANCE	AD-10
QUALITY ASSURANCE	AD-10
AVIATION MACHINIST'S MATE INTERMEDIATE LEVEL	AD-11
AUXILIARY POWER SYSTEMS MAINTENANCE	AD-11
CORROSION CONTROL	AD-11
ENGINE SYSTEMS MAINTENANCE	AD-12
FUEL SYSTEMS MAINTENANCE	AD-14
HELICOPTER MAINTENANCE	AD-14
LINE MAINTENANCE	AD-14
MAINTENANCE ADMINISTRATION	AD-14
POWER PLANT MAINTENANCE	AD-15
PROPELLER SYSTEMS MAINTENANCE	AD-15
QUALITY ASSURANCE	AD-16

NAVY ENLISTED OCCUPATIONAL STANDARD

FOR

AVIATION MACHINIST'S MATE (AD)



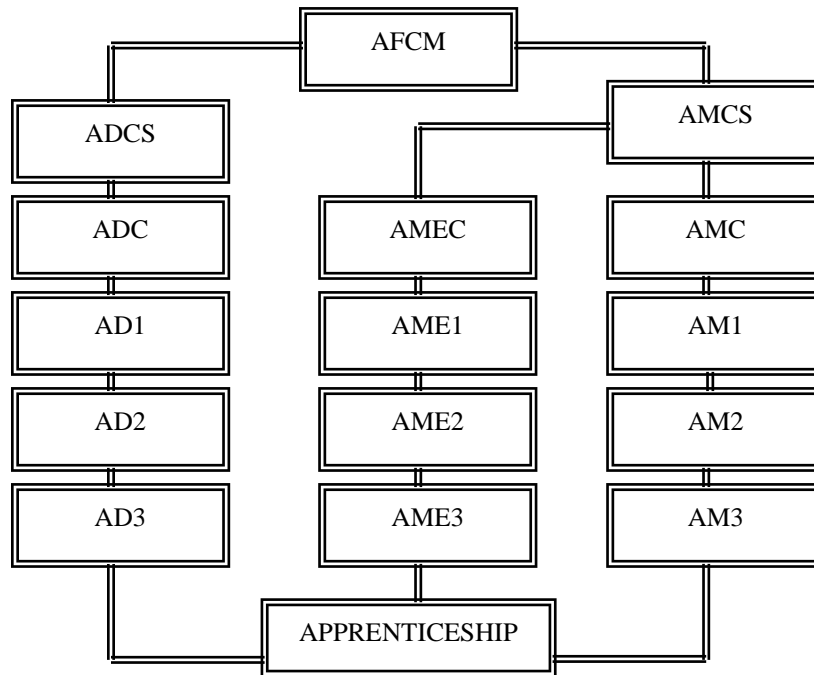
SCOPE OF RATING

Aviation Machinist's Mates (AD) maintain, inspect, troubleshoot, and preserve aircraft transmission systems, aircraft fuel systems, rotor systems, propeller systems, auxiliary power units, and engine and subsystems including fuel, lubrication, intake, compressor, combustion, turbine, exhaust, accessory gearbox, anti-ice, bleed air systems, etc.; conduct special and conditional inspections, oil analysis, and gas free inspections; perform functional checks and required adjustments on engines, propellers, rotors, and related systems; conduct Quality Assurance (QA) inspections; and supervise and provide training to power plant work centers.

This Occupational Standard is to be incorporated in Volume I, Part B, of the Manual of Navy Enlisted Manpower and Personnel Classifications and Occupational Standards (NAVPERS 18068F) as Chapter 3.

GENERAL INFORMATION

CAREER PATTERN



Normal path of advancement to Chief Warrant Officer and Limited Duty Officer categories can be found in OPNAVINST 1420.1.

For rating entry requirements, refer to MILPERSMAN 1306-618.

SAFETY

The observance of Operational Risk Management (ORM) and proper safety precautions in all areas is an integral part of each billet and the responsibility of every Sailor; therefore, it is a universal requirement for all ratings.

Job Title**Aviation Machinist's Mate Organizational Level****Job Code****001362****Job Family**

Installation, Maintenance, and Repair

NOC

TBD

Short Title (30 Characters)

AVIA MACHINIST MATE O-LEVEL

Short Title (14 Characters)

AVENG SYS O-LV

Pay Plan

Enlisted

Career Field

AD

Other Relationships and Rules

EXXX and IXXX series and other NECs as assigned

Job Description

Aviation Machinist's Mates Organization Level conduct scheduled and unscheduled maintenance operations including engine operations and inspections, removals, installations, configurations and troubleshooting of engines and engine transmissions, rotors, propellers, and fuel and lubrications systems to facilitate daily flight operations and mission requirements.

DoD Relationship**O*NET Relationship****Group Title**

Aircraft Engines

DoD Code

160100

Occupation Title

Aircraft Mechanics and Service Technicians

SOC Code

49-3011.00

Job Family

Installation, Maintenance, and Repair

Skills*Systems Evaluation**Quality Control Analysis**Equipment Maintenance**Repairing**Operation Monitoring**Equipment Selection**Troubleshooting**Management of Material Resources**Monitoring**Coordination***Abilities***Selective Attention**Manual Dexterity**Near Vision**Inductive Reasoning**Flexibility of Closure**Perceptual Speed**Rate Control**Problem Sensitivity**Multi-limb Coordination**Written Comprehension***AUXILIARY POWER SYSTEMS MAINTENANCE****Paygrade****Task Type****Task Statements**

E4

CORE

Inspect Auxiliary Power Plant (APP)/Auxiliary Power Units (APU) systems

E4

CORE

Repair Auxiliary Power Plant (APP)/Auxiliary Power Unit (APU) systems and components

E4

CORE

Replace Auxiliary Power Plant (APP)/Auxiliary Power Unit (APU) system components

E4

CORE

Replace Auxiliary Power Plant (APP)/Auxiliary Power Units (APU)

E4

CORE

Replace Auxiliary Power Plant (APP)/Auxiliary Power Units (APU) systems and components

E4

CORE

Test Auxiliary Power Plant (APP)/Auxiliary Power Unit (APU) systems

E4

CORE

Troubleshoot Auxiliary Power Plant (APP)/Auxiliary Power Units (APU) systems

CORROSION CONTROL**Paygrade****Task Type****Task Statements**

E4

CORE

Conduct corrosion inspections

E4

CORE

Inspect aircraft components for corrosion

E4

CORE

Perform aircraft, Support Equipment (SE), and aircraft related equipment preservation/de-preservation

E4

CORE

Perform corrosion prevention procedures

E4

CORE

Perform emergency reclamations

E4

CORE

Perform preventive maintenance on aircraft, Support Equipment (SE), and aircraft related equipment

CORROSION CONTROL (CONT'D)

<u>Paygrade</u>	<u>Task Type</u>	<u>Task Statements</u>
E4	CORE	Treat power plant and related systems for corrosion

ENGINE SYSTEMS MAINTENANCE

<u>Paygrade</u>	<u>Task Type</u>	<u>Task Statements</u>
E4	CORE	Inspect combustion systems
E4	CORE	Inspect engine anti-ice systems and components
E4	CORE	Inspect engine bleed air systems
E4	CORE	Inspect engine compressor assemblies
E4	CORE	Inspect engine compressor components
E4	CORE	Inspect engine control system components
E5	CORE	Inspect engine control systems
E4	CORE	Inspect engine exhaust systems
E4	CORE	Inspect engine ignition systems
E5	CORE	Inspect engine starting systems
E4	CORE	Inspect internal cold sections
E4	CORE	Inspect internal hot sections
E4	CORE	Inspect oil systems
E4	CORE	Inspect oil systems components
E4	CORE	Inspect power plant air inlet systems
E4	CORE	Inspect reduction gearbox systems and components
E5	CORE	Inspect torque meter assemblies
E4	CORE	Inspect turbine modules
E4	CORE	Maintain oil systems
E4	CORE	Perform engine exhaust system preservation/de-preservation
E4	CORE	Repair engine anti-ice systems
E4	CORE	Repair engine bleed air systems
E4	CORE	Repair engine exhaust systems
E4	CORE	Repair engine ignition systems
E4	CORE	Repair oil systems and components
E4	CORE	Repair power plant air inlet systems
E4	CORE	Repair reduction gearbox systems and components
E4	CORE	Repair torque meter assemblies
E4	CORE	Replace engine anti-ice system components
E4	CORE	Replace engine bleed air system components
E4	CORE	Replace engine control system components
E4	CORE	Replace engine exhaust system components
E4	CORE	Replace engine fuel system components
E4	CORE	Replace engine ignition system components
E4	CORE	Replace engine starting system components
E4	CORE	Replace oil system components

ENGINE SYSTEMS MAINTENANCE (CONT'D)

<u>Paygrade</u>	<u>Task Type</u>	<u>Task Statements</u>
E4	CORE	Replace power plant air inlet system components
E4	CORE	Replace reduction gearbox systems and components
E4	CORE	Replace turbine modules
E5	CORE	Test combustion systems
E4	CORE	Test compressor systems
E4	CORE	Test engine anti-ice systems and components
E4	CORE	Test engine bleed air systems
E4	CORE	Test engine control system components
E4	CORE	Test engine control systems
E4	CORE	Test engine exhaust systems
E4	CORE	Test engine ignition systems
E4	CORE	Test engine starting systems
E4	CORE	Test oil systems and components
E4	CORE	Test power plant air inlet systems
E5	CORE	Test reduction gearbox systems
E5	CORE	Test torque meter assemblies
E4	CORE	Test turbine modules
E4	CORE	Troubleshoot combustion systems
E4	CORE	Troubleshoot compressor systems
E4	CORE	Troubleshoot engine anti-ice systems
E4	CORE	Troubleshoot engine bleed air systems
E4	CORE	Troubleshoot engine control systems
E4	CORE	Troubleshoot engine exhaust systems
E4	CORE	Troubleshoot engine ignition systems
E4	CORE	Troubleshoot engine starting systems
E4	CORE	Troubleshoot oil systems
E4	CORE	Troubleshoot power plant air inlet system
E4	CORE	Troubleshoot reduction gearbox systems and components
E4	CORE	Troubleshoot torque meter assemblies
E4	CORE	Troubleshoot turbine modules

FUEL SYSTEMS MAINTENANCE

<u>Paygrade</u>	<u>Task Type</u>	<u>Task Statements</u>
E4	CORE	Inspect Aerial Refueling Stores (ARS)
E4	CORE	Inspect aircraft fuel systems
E4	CORE	Inspect engine fuel systems
E4	CORE	Inspect external fuel stores
E4	CORE	Perform Aerial Refueling Stores (ARS) preservation/de-preservation
E4	CORE	Perform fuel systems and related components preservation/de-preservation
E4	CORE	Repair Aerial Refueling Stores (ARS)

FUEL SYSTEMS MAINTENANCE (CONT'D)

<u>Paygrade</u>	<u>Task Type</u>	<u>Task Statements</u>
E4	CORE	Repair engine fuel systems
E4	CORE	Repair external fuel stores
E4	CORE	Replace aircraft fuel system components
E4	CORE	Replace external fuel stores
E4	CORE	Test Aerial Refueling Stores (ARS)
E4	CORE	Test aircraft fuel systems
E4	CORE	Test engine fuel systems
E4	CORE	Test external fuel stores
E4	CORE	Troubleshoot Aerial Refueling Stores (ARS)
E4	CORE	Troubleshoot aircraft fuel systems
E4	CORE	Troubleshoot engine fuel systems
E4	CORE	Troubleshoot external fuel stores

HELICOPTER MAINTENANCE

<u>Paygrade</u>	<u>Task Type</u>	<u>Task Statements</u>
E4	CORE	Inspect aircraft drive transmission systems
E4	CORE	Inspect aircraft rotor systems
E5	CORE	Inspect engine fire bottles
E5	CORE	Perform helicopter vibration analysis
E4	CORE	Repair aircraft drive transmission system components
E4	CORE	Repair aircraft rotor systems
E4	CORE	Replace aircraft drive transmission system components
E4	CORE	Replace aircraft rotor system components
E5	CORE	Replace engine fire bottles
E4	CORE	Test aircraft drive transmission systems
E5	CORE	Test aircraft rotor systems
E5	CORE	Test engine fire bottles
E4	CORE	Troubleshoot aircraft drive transmission systems
E4	CORE	Troubleshoot aircraft rotor systems
E4	CORE	Troubleshoot engine fire bottles

LINE MAINTENANCE

<u>Paygrade</u>	<u>Task Type</u>	<u>Task Statements</u>
E4	CORE	Collect fuel samples
E4	CORE	Conduct daily inspections
E4	CORE	Conduct preoperational Support Equipment (SE) inspections
E4	CORE	Conduct turnaround inspections
E4	CORE	Perform oil servicing
E4	CORE	Review Automated Aircraft Discrepancy Books (AADB)

MAINTENANCE ADMINISTRATION

<u>Paygrade</u>	<u>Task Type</u>	<u>Task Statements</u>
E7	CORE	Assign aircraft to missions
E6	CORE	Conduct flight crew briefs
E6	CORE	Conduct flight crew debriefs
E7	CORE	Conduct maintenance briefs
E4	CORE	Document maintenance actions
E7	CORE	Manage component cannibalization
E6	CORE	Manage scheduled maintenance
E6	CORE	Manage unscheduled maintenance
E7	CORE	Prepare aircraft status reports
E6	CORE	Prepare engine status reports
E7	CORE	Release aircraft safe for flight
E7	CORE	Schedule aircraft inspections
E7	CORE	Schedule aircraft maintenance

POWER PLANT MAINTENANCE

<u>Paygrade</u>	<u>Task Type</u>	<u>Task Statements</u>
E4	CORE	Collect oil samples for analysis
E5	CORE	Conduct aircraft maintenance turns
E4	CORE	Inspect accessory gearbox assemblies
E5	CORE	Inspect Aircraft Mounted Accessory Drive (AMAD) assemblies
E5	CORE	Inspect drive shafts
E5	CORE	Inspect Gas Turbine Compressor (GTC) assemblies
E5	CORE	Inspect Generator Converter Units (GCU)
E5	CORE	Inspect Quick Engine Change (QEC) assemblies
E4	CORE	Perform component cannibalization
E4	CORE	Perform engine and related components preservation/de-preservation
E4	CORE	Perform engine wash
E4	CORE	Repair accessory gearbox assemblies
E4	CORE	Repair drive shafts
E4	CORE	Replace accessory gearbox assemblies
E4	CORE	Replace Aircraft Mounted Accessory Drive (AMAD) assemblies
E4	CORE	Replace drive shafts
E4	CORE	Replace Generator Converter Units (GCU)
E4	CORE	Replace Quick Engine Change (QEC) assemblies
E4	CORE	Test accessory gearbox assemblies
E4	CORE	Test drive shafts
E4	CORE	Test Gas Turbine Compressor (GTC)
E4	CORE	Test Quick Engine Change (QEC) assemblies
E4	CORE	Troubleshoot accessory gearbox assemblies
E4	CORE	Troubleshoot drive shafts

POWER PLANT MAINTENANCE (CONT'D)

<u>Paygrade</u>	<u>Task Type</u>	<u>Task Statements</u>
E4	CORE	Troubleshoot Gas Turbine Compressor (GTC)
E4	CORE	Troubleshoot Generator Converter Units (GCU)
E4	CORE	Troubleshoot Quick Engine Change (QEC) assemblies

PROPELLER SYSTEMS MAINTENANCE

<u>Paygrade</u>	<u>Task Type</u>	<u>Task Statements</u>
E4	CORE	Inspect aircraft propeller systems and components
E4	CORE	Perform preventive maintenance on aircraft propeller systems
E5	CORE	Perform propeller vibration analysis
E4	CORE	Repair aircraft propeller systems and components
E4	CORE	Replace aircraft propeller system components
E5	CORE	Replace aircraft propeller systems
E4	CORE	Test aircraft propeller systems and components
E4	CORE	Troubleshoot aircraft propeller systems and components

QUALITY ASSURANCE

<u>Paygrade</u>	<u>Task Type</u>	<u>Task Statements</u>
E4	CORE	Conduct aircraft acceptance inspections
E4	CORE	Conduct aircraft conditional inspections
E4	CORE	Conduct aircraft special inspections
E4	CORE	Conduct aircraft transfer inspections
E4	CORE	Conduct Collateral Duty Inspector (CDI) inspections
E5	CORE	Conduct Collateral Duty Quality Assurance Representative (CDQAR) inspections
E4	CORE	Conduct engine acceptance inspections
E4	CORE	Conduct engine conditional inspections
E4	CORE	Conduct engine transfer inspections
E6	CORE	Conduct gas free inspections
E5	CORE	Conduct phase inspections
E6	CORE	Conduct Quality Assurance (QA) inspections
E4	CORE	Conduct special engine inspections
E4	CORE	Incorporate Technical Directives (TD)
E6	CORE	Manage Naval Aviation Maintenance Programs (NAMP)
E6	CORE	Monitor Naval Aviation Maintenance Programs (NAMP)
E5	CORE	Perform engine control rigging
E5	NON-CORE	Validate engine control rigging

Job Title**Aviation Machinist's Mate Intermediate Level****Job Code****001417****Job Family**

Installation, Maintenance, and Repair

NOC

TBD

Short Title (30 Characters)

AVIA MACHINIST MATE I-LEVEL

Short Title (14 Characters)

AVENG SYS I-LV

Pay Plan

Enlisted

Career Field

AD

Other Relationships and Rules

EXXX and IXXX series and other NECs as assigned

Job Description

Aviation Machinist's Mates Intermediate Level perform in-depth repairs of engines, including complete engine teardowns, turboshaft, turbofan, turboprop, and gas turbine compressor engine components repairs, and propeller, rotor, gearbox, and drive accessory repairs; evaluate turbine engine performance using engine test cells and advanced calibration equipment; and maintain, troubleshoot and repair test benches and Support Equipment (SE) as required.

DoD Relationship**O*NET Relationship****Group Title**

Aircraft Engines

DoD Code

160100

Occupation Title

Aircraft Mechanics and Service Technicians

SOC Code

49-3011.00

Job Family

Installation, Maintenance, and Repair

Skills*Systems Evaluation**Repairing**Quality Control Analysis**Equipment Maintenance**Equipment Selection**Operation Monitoring**Troubleshooting**Management of Material Resources**Monitoring**Judgment and Decision Making***Abilities***Selective Attention**Manual Dexterity**Near Vision**Flexibility of Closure**Inductive Reasoning**Perceptual Speed**Rate Control**Multi-limb Coordination**Dynamic Strength**Problem Sensitivity***AUXILIARY POWER SYSTEMS MAINTENANCE**

<u>Paygrade</u>	<u>Task Type</u>	<u>Task Statements</u>
E4	CORE	Inspect Auxiliary Power Plant (APP)/Auxiliary Power Units (APU) systems
E4	CORE	Repair Auxiliary Power Plant (APP)/Auxiliary Power Unit (APU) systems and components
E4	CORE	Replace Auxiliary Power Plant (APP)/Auxiliary Power Unit (APU) system components
E4	CORE	Replace Auxiliary Power Plant (APP)/Auxiliary Power Units (APU) systems and components
E4	CORE	Test Auxiliary Power Plant (APP)/Auxiliary Power Unit (APU) systems
E4	CORE	Troubleshoot Auxiliary Power Plant (APP)/Auxiliary Power Units (APU) systems

CORROSION CONTROL

<u>Paygrade</u>	<u>Task Type</u>	<u>Task Statements</u>
E4	CORE	Conduct corrosion inspections
E4	CORE	Inspect aircraft components for corrosion
E4	CORE	Perform aircraft, Support Equipment (SE), and aircraft related equipment preservation/de-preservation
E4	CORE	Perform corrosion prevention procedures
E4	CORE	Perform emergency reclamations
E4	NON-CORE	Perform engine test cell equipment preservation/de-preservation
E4	CORE	Perform preventive maintenance on aircraft, Support Equipment (SE), and aircraft related equipment

CORROSION CONTROL (CONT'D)

<u>Paygrade</u>	<u>Task Type</u>	<u>Task Statements</u>
E4	CORE	Treat power plant and related systems for corrosion

ENGINE SYSTEMS MAINTENANCE

<u>Paygrade</u>	<u>Task Type</u>	<u>Task Statements</u>
E4	CORE	Inspect combustion systems
E4	CORE	Inspect engine anti-ice systems and components
E4	CORE	Inspect engine bleed air systems
E4	CORE	Inspect engine compressor assemblies
E4	CORE	Inspect engine compressor components
E4	CORE	Inspect engine control system components
E5	CORE	Inspect engine control systems
E4	CORE	Inspect engine exhaust systems
E4	CORE	Inspect engine ignition systems
E4	CORE	Inspect internal cold sections
E4	CORE	Inspect internal hot sections
E4	CORE	Inspect oil systems
E4	CORE	Inspect oil systems components
E4	CORE	Inspect power plant air inlet systems
E4	CORE	Inspect reduction gearbox systems and components
E5	CORE	Inspect torque meter assemblies
E4	CORE	Inspect turbine modules
E4	CORE	Maintain oil systems
E4	CORE	Perform engine exhaust system preservation/de-preservation
E4	CORE	Repair combustion systems
E4	CORE	Repair compressor systems
E4	CORE	Repair engine anti-ice systems
E4	CORE	Repair engine bleed air systems
E4	CORE	Repair engine control system components
E4	CORE	Repair engine control systems
E4	CORE	Repair engine exhaust systems
E4	CORE	Repair engine ignition systems
E4	CORE	Repair engine starting system components
E4	CORE	Repair oil systems and components
E4	CORE	Repair power plant air inlet systems
E4	CORE	Repair reduction gearbox systems and components
E4	CORE	Repair torque meter assemblies
E4	CORE	Repair turbine modules
E4	CORE	Replace engine anti-ice system components
E4	CORE	Replace engine bleed air system components
E4	CORE	Replace engine control system components

ENGINE SYSTEMS MAINTENANCE (CONT'D)

<u>Paygrade</u>	<u>Task Type</u>	<u>Task Statements</u>
E4	CORE	Replace engine exhaust system components
E4	CORE	Replace engine fuel system components
E4	CORE	Replace engine ignition system components
E4	CORE	Replace engine starting system components
E4	CORE	Replace oil system components
E4	CORE	Replace power plant air inlet system components
E4	CORE	Replace reduction gearbox systems and components
E4	CORE	Replace torque meter assemblies
E4	CORE	Replace turbine modules
E5	CORE	Test combustion systems
E4	CORE	Test compressor systems
E4	CORE	Test engine anti-ice systems and components
E4	CORE	Test engine bleed air systems
E4	CORE	Test engine control system components
E4	CORE	Test engine control systems
E4	CORE	Test engine exhaust systems
E4	CORE	Test engine ignition systems
E4	CORE	Test engine starting systems
E4	CORE	Test oil systems and components
E4	CORE	Test power plant air inlet systems
E5	CORE	Test reduction gearbox systems
E5	CORE	Test torque meter assemblies
E4	CORE	Test turbine modules
E4	CORE	Troubleshoot combustion systems
E4	CORE	Troubleshoot compressor systems
E4	CORE	Troubleshoot engine anti-ice systems
E4	CORE	Troubleshoot engine bleed air systems
E4	CORE	Troubleshoot engine control systems
E4	CORE	Troubleshoot engine exhaust systems
E4	CORE	Troubleshoot engine ignition systems
E4	CORE	Troubleshoot engine starting systems
E4	CORE	Troubleshoot oil systems
E4	CORE	Troubleshoot power plant air inlet system
E4	CORE	Troubleshoot reduction gearbox systems and components
E4	CORE	Troubleshoot torque meter assemblies
E4	CORE	Troubleshoot turbine modules

FUEL SYSTEMS MAINTENANCE

<u>Paygrade</u>	<u>Task Type</u>	<u>Task Statements</u>
E4	CORE	Inspect Aerial Refueling Stores (ARS)
E4	CORE	Inspect engine fuel systems
E4	CORE	Inspect external fuel stores
E4	CORE	Perform Aerial Refueling Stores (ARS) preservation/de-preservation
E4	CORE	Perform fuel systems and related components preservation/de-preservation
E4	CORE	Repair Aerial Refueling Stores (ARS)
E4	CORE	Repair aircraft fuel system components
E4	CORE	Repair engine fuel systems
E4	CORE	Repair external fuel stores
E4	CORE	Replace aircraft fuel system components
E4	CORE	Test Aerial Refueling Stores (ARS)
E4	CORE	Test engine fuel systems
E4	CORE	Test external fuel stores
E4	CORE	Troubleshoot Aerial Refueling Stores (ARS)
E4	CORE	Troubleshoot engine fuel systems
E4	CORE	Troubleshoot external fuel stores

HELICOPTER MAINTENANCE

<u>Paygrade</u>	<u>Task Type</u>	<u>Task Statements</u>
E4	CORE	Repair aircraft drive transmission system components
E4	CORE	Replace aircraft drive transmission system components
E4	CORE	Replace aircraft rotor system components
E4	CORE	Test aircraft drive transmission systems

LINE MAINTENANCE

<u>Paygrade</u>	<u>Task Type</u>	<u>Task Statements</u>
E4	CORE	Collect fuel samples
E4	CORE	Conduct preoperational Support Equipment (SE) inspections
E4	CORE	Perform oil servicing

MAINTENANCE ADMINISTRATION

<u>Paygrade</u>	<u>Task Type</u>	<u>Task Statements</u>
E7	CORE	Conduct maintenance briefs
E7	CORE	Conduct production briefs
E4	CORE	Document maintenance actions
E7	CORE	Manage component cannibalization
E6	CORE	Manage scheduled maintenance
E6	CORE	Manage unscheduled maintenance
E6	CORE	Prepare Broad Arrow (BA) reports
E6	CORE	Prepare engine status reports

POWER PLANT MAINTENANCE

<u>Paygrade</u>	<u>Task Type</u>	<u>Task Statements</u>
E4	CORE	Collect oil samples for analysis
E4	NON-CORE	Configure engine test cell equipment for testing
E4	CORE	Inspect accessory gearbox assemblies
E5	NON-CORE	Inspect engine test cell equipment
E5	CORE	Inspect Gas Turbine Compressor (GTC) assemblies
E5	NON-CORE	Inspect oil analysis equipment
E5	CORE	Inspect Quick Engine Change (QEC) assemblies
E5	NON-CORE	Maintain oil analysis equipment
E4	CORE	Perform component cannibalization
E4	CORE	Perform engine and related components preservation/de-preservation
E5	NON-CORE	Perform engine test cell operations
E4	CORE	Perform engine wash
E5	NON-CORE	Perform oil analysis equipment standardization
E4	CORE	Repair accessory gearbox assemblies
E4	CORE	Repair drive shafts
E4	NON-CORE	Repair engine test cell equipment
E4	CORE	Repair Gas Turbine Compressor (GTC) assemblies
E5	NON-CORE	Repair oil analysis equipment
E4	CORE	Repair Quick Engine Change (QEC) assemblies
E4	CORE	Replace accessory gearbox assemblies
E4	CORE	Replace combustion system components
E4	CORE	Replace compressor system components
E4	CORE	Replace Gas Turbine Compressors (GTC)
E4	CORE	Replace Quick Engine Change (QEC) assemblies
E4	CORE	Test accessory gearbox assemblies
E4	CORE	Test drive shafts
E5	NON-CORE	Test engine test cell equipment
E4	CORE	Test Gas Turbine Compressor (GTC)
E5	NON-CORE	Test oil analysis equipment
E4	CORE	Test Quick Engine Change (QEC) assemblies
E4	CORE	Troubleshoot accessory gearbox assemblies
E5	NON-CORE	Troubleshoot engine test cell equipment
E4	CORE	Troubleshoot Gas Turbine Compressor (GTC)
E5	NON-CORE	Troubleshoot oil analysis equipment
E4	CORE	Troubleshoot Quick Engine Change (QEC) assemblies

PROPELLER SYSTEMS MAINTENANCE

<u>Paygrade</u>	<u>Task Type</u>	<u>Task Statements</u>
E4	CORE	Inspect aircraft propeller systems and components
E4	CORE	Perform preventive maintenance on aircraft propeller systems

PROPELLER SYSTEMS MAINTENANCE (CONT'D)

<u>Paygrade</u>	<u>Task Type</u>	<u>Task Statements</u>
E4	CORE	Repair aircraft propeller systems and components
E4	CORE	Replace aircraft propeller system components
E5	CORE	Replace aircraft propeller systems
E4	CORE	Test aircraft propeller systems and components
E4	CORE	Troubleshoot aircraft propeller systems and components

QUALITY ASSURANCE

<u>Paygrade</u>	<u>Task Type</u>	<u>Task Statements</u>
E4	CORE	Conduct Collateral Duty Inspector (CDI) inspections
E5	CORE	Conduct Collateral Duty Quality Assurance Representative (CDQAR) inspections
E4	CORE	Conduct engine acceptance inspections
E4	CORE	Conduct engine conditional inspections
E4	CORE	Conduct engine transfer inspections
E6	CORE	Conduct gas free inspections
E6	CORE	Conduct Quality Assurance (QA) inspections
E4	CORE	Conduct special engine inspections
E4	CORE	Incorporate Technical Directives (TD)
E6	CORE	Manage Naval Aviation Maintenance Programs (NAMP)
E6	CORE	Monitor Naval Aviation Maintenance Programs (NAMP)
E5	CORE	Perform engine control rigging
E5	NON-CORE	Validate engine control rigging