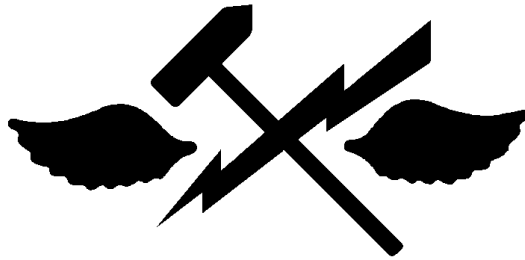


CHAPTER 10



AVIATION SUPPORT EQUIPMENT TECHNICIAN (AS)

NAVPERS 18068-10E
CH-75

AVIATION SUPPORT EQUIPMENT TECHNICIAN (AS) TABLE OF CONTENTS

SCOPE OF RATING	AS-3
GENERAL INFORMATION	AS-4
AVIATION SUPPORT EQUIPMENT TECHNICIAN	AS-5
CORROSION CONTROL	AS-5
ELECTRO/MECHANICAL MAINTENANCE	AS-5
GENERAL SUPPORT EQUIPMENT	AS-6
HYDRAULIC/PNEUMATIC MAINTENANCE	AS-7
MANAGEMENT	AS-8
MECHANICAL MAINTENANCE	AS-9
QUALITY ASSURANCE	AS-9
TECHNICAL ADMINISTRATION	AS-10

NAVY ENLISTED OCCUPATIONAL STANDARD
FOR
AVIATION SUPPORT EQUIPMENT TECHNICIAN (AS)



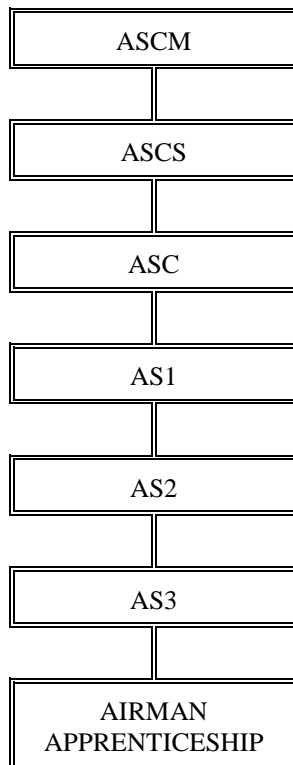
SCOPE OF RATING

Aviation Support Equipment Technicians (AS) perform preventive and corrective maintenance on aviation support equipment, aviation armament handling equipment, aviation mobile firefighting units, and associated components and systems; service, inspect, test, troubleshoot, and repair diesel engine systems, transmission systems, hydraulic, hydrostatic, and pneumatic systems, steering and suspension systems, cryogenic systems, electrical systems, gas turbine compressor units, electrical and hydraulic power generating equipment, and air-conditioning and refrigeration systems (excluding avionics support equipment); manage support equipment assets at different command levels; and provide training in operation of aviation support equipment.

This Occupational Standard is to be incorporated in Volume I, Part B, of the Manual of Navy Enlisted Manpower and Personnel Classifications and Occupational Standards (NAVPERS 18068F) as Chapter 10.

GENERAL INFORMATION

CAREER PATTERN



Normal path of advancement to Chief Warrant Officer and Limited Duty Officer categories can be found in OPNAVINST 1420.1.

For rating entry requirements, refer to MILPERSMAN 1306-618.

SAFETY

The observance of Operational Risk Management (ORM) and proper safety precautions in all areas is an integral part of each billet and the responsibility of every Sailor; therefore, it is a universal requirement for all ratings.

Job Title**Aviation Support Equipment Technician****Job Code****002320****Job Family**

Installation, Maintenance, and Repair

NOC

TBD

Short Title (30 Characters)

AVIATION SUPPORT EQUIPMENT TEC

Short Title (14 Characters)

AV SUP EQ TECH

Pay Plan

Enlisted

Career Field

AS

Other Relationships and Rules

NEC FXXX series and other NECs as assigned

Job Description

Aviation Support Equipment Technicians perform scheduled and unscheduled maintenance on aircraft support equipment. They perform maintenance (adjust, troubleshoot, and repair) on mechanical systems (diesel engines, gas turbine compressor systems, brake systems, transmission systems, welding and structural repair equipment), air conditioning and refrigeration systems (compressors, condensers, evaporators, refrigerant reclaimer equipment and plumbing components, reclaiming of refrigerant), electrical systems (Mobile Electrical Power Plant (MEPP) systems, aircraft tow tractors electrical systems, forklift electrical systems, and numerous other support equipment electrical systems), mobile maintenance facility (electrical/structural corrosion control, mobile facility van complexing, environmental control units), cryogenic equipment (gaseous and liquid oxygen servicing systems, gaseous nitrogen servicing systems and oxygen system purge units), hydraulic/pneumatic systems (hydraulic test stands, aircraft and automotive lifting devices, maintenance platforms, various pumps, actuators and accumulators). They also perform support equipment management, training and licensing, by planning, organizing, scheduling, and implementing daily maintenance tasks and training requirements.

DoD RelationshipGroup Title

Aircraft Accessories

DoD Code

160200

O*NET RelationshipOccupation Title

Automotive Master Mechanics

SOC Code

49-3023.01

Job Family

Installation, Maintenance, and Repair

Skills*Systems Evaluation**Equipment Maintenance**Quality Control Analysis**Repairing**Complex Problem Solving**Troubleshooting**Judgment and Decision Making**Management of Material Resources**Management of Personnel Resources**Active Learning***Abilities***Problem Sensitivity**Deductive Reasoning**Inductive Reasoning**Written Comprehension**Originality**Oral Expression**Manual Dexterity**Information Ordering**Oral Comprehension**Visual Color Discrimination***CORROSION CONTROL****Paygrade**

E5

Task Type

CORE

Task Statements

Determine corrosion treatment

E4

CORE

Identify corrosion types

E4

CORE

Implement corrosion control maintenance

E4

CORE

Perform preservation procedures

ELECTRO/MECHANICAL MAINTENANCE**Paygrade**

E4

Task Type

CORE

Task Statements

Build power cables

E4

CORE

Maintain air conditioning and refrigeration equipment

E4

CORE

Maintain air conditioning and refrigeration reclaimer equipment

E4

CORE

Maintain aircraft tow tractors

E4

CORE

Maintain deicing equipment

E4

CORE

Maintain Environmental Control Unit (ECU)

E4

CORE

Maintain gas turbine engine

E4

CORE

Maintain Mobile Electric Power Plant (MEPP)

E4

CORE

Maintain Mobile Maintenance Facility (MMF)

E4

CORE

Maintain Mobile Maintenance Facility (MMF) generator

ELECTRO/MECHANICAL MAINTENANCE (CONT'D)

<u>Paygrade</u>	<u>Task Type</u>	<u>Task Statements</u>
E4	CORE	Maintain Weight Handling Equipment (WHE)
E4	NON-CORE	Recharge air condition and refrigeration equipment refrigerants
E4	NON-CORE	Recover air condition and refrigeration equipment refrigerants
E4	CORE	Repair air conditioning and refrigeration equipment
E4	CORE	Repair air conditioning and refrigeration reclaimer equipment
E4	CORE	Repair aircraft tow tractors
E4	CORE	Repair deicing equipment
E4	CORE	Repair Environmental Control Unit (ECU)
E4	CORE	Repair gas turbine engine
E4	CORE	Repair Mobile Electric Power Plant (MEPP)
E4	CORE	Repair Mobile Maintenance Facility (MMF)
E5	CORE	Repair Mobile Maintenance Facility (MMF) generator
E4	CORE	Repair Weight Handling Equipment (WHE)
E4	CORE	Test air conditioning and refrigeration equipment
E4	CORE	Test air conditioning and refrigeration reclaimer equipment
E4	CORE	Test aircraft tow tractors
E4	CORE	Test deicing equipment
E4	CORE	Test Environmental Control Unit (ECU)
E4	CORE	Test gas turbine engine
E4	CORE	Test Mobile Electric Power Plant (MEPP)
E4	CORE	Test Mobile Maintenance Facility (MMF)
E4	CORE	Test Mobile Maintenance Facility (MMF) generator
E4	CORE	Test Weight Handling Equipment (WHE)
E4	CORE	Troubleshoot air conditioning and refrigeration equipment
E4	CORE	Troubleshoot air conditioning and refrigeration reclaimer equipment
E4	CORE	Troubleshoot aircraft tow tractors
E4	CORE	Troubleshoot deicing equipment
E4	CORE	Troubleshoot Environmental Control Unit (ECU)
E4	CORE	Troubleshoot gas turbine engine
E4	CORE	Troubleshoot Mobile Electric Power Plant (MEPP)
E4	CORE	Troubleshoot Mobile Maintenance Facility (MMF)
E4	CORE	Troubleshoot Mobile Maintenance Facility (MMF) generator
E4	CORE	Troubleshoot Weight Handling Equipment (WHE)

GENERAL SUPPORT EQUIPMENT MAINTENANCE

<u>Paygrade</u>	<u>Task Type</u>	<u>Task Statements</u>
E5	CORE	Conduct flight deck troubleshooter operations
E4	CORE	Maintain aviation Peculiar Support Equipment (PSE)
E4	CORE	Maintain Common Support Equipment (CSE)
E4	CORE	Maintain support equipment tire and wheel assemblies
E4	CORE	Repair aviation Peculiar Support Equipment (PSE)

GENERAL SUPPORT EQUIPMENT MAINTENANCE (CONT'D)

<u>Paygrade</u>	<u>Task Type</u>	<u>Task Statements</u>
E4	CORE	Repair Common Support Equipment (CSE)
E4	CORE	Repair support equipment tire and wheel assemblies
E4	CORE	Test aviation Peculiar Support Equipment (PSE)
E4	CORE	Test Common Support Equipment (CSE)
E4	CORE	Test support equipment tire and wheel assemblies
E4	CORE	Troubleshoot aviation Peculiar Support Equipment (PSE)
E4	CORE	Troubleshoot Common Support Equipment (CSE)

HYDRAULIC/PNEUMATIC MAINTENANCE

<u>Paygrade</u>	<u>Task Type</u>	<u>Task Statements</u>
E5	CORE	Inspect support equipment Hydraulic Servicing Units (HSU)
E4	CORE	Maintain aircraft engine trailers
E4	CORE	Maintain aircraft jacks
E4	CORE	Maintain gaseous nitrogen support equipment
E4	CORE	Maintain gaseous oxygen support equipment
E5	CORE	Maintain hydraulic contamination control standards (i.e. samples, tools, logs, etc.)
E4	CORE	Maintain hydraulic purification support equipment
E4	CORE	Maintain Liquid Oxygen (LOX) support equipment
E4	CORE	Maintain Material Handling Equipment (MHE)
E4	CORE	Maintain support equipment hydraulic power supply
E4	CORE	Maintain support equipment Hydraulic Servicing Units (HSU)
E4	CORE	Perform hydraulic contamination control
E5	CORE	Perform hydraulic purification procedures
E4	NON-CORE	Recharge Environmental Control Unit (ECU) refrigerants
E4	NON-CORE	Recover Environmental Control Unit (ECU) refrigerants
E4	CORE	Repair aircraft engine trailers
E4	CORE	Repair aircraft jacks
E4	CORE	Repair gaseous nitrogen support equipment
E4	CORE	Repair gaseous oxygen support equipment
E4	CORE	Repair hydraulic purification support equipment
E4	CORE	Repair hydraulic systems
E4	CORE	Repair Liquid Oxygen (LOX) support equipment
E4	CORE	Repair Material Handling Equipment (MHE)
E4	CORE	Repair support equipment hydraulic power supply
E4	CORE	Repair support equipment Hydraulic Servicing Units (HSU)
E4	CORE	Test aircraft engine trailers
E4	CORE	Test aircraft jacks
E4	CORE	Test gaseous nitrogen support equipment
E4	CORE	Test gaseous oxygen support equipment
E4	CORE	Test hydraulic fluids for contamination
E4	CORE	Test hydraulic purification support equipment

HYDRAULIC/PNEUMATIC MAINTENANCE (CONT'D)

<u>Paygrade</u>	<u>Task Type</u>	<u>Task Statements</u>
E4	CORE	Test hydraulic systems
E4	CORE	Test Liquid Oxygen (LOX) support equipment
E4	CORE	Test Material Handling Equipment (MHE)
E4	CORE	Test support equipment hydraulic power supply
E4	CORE	Test support equipment Hydraulic Servicing Units (HSU)
E4	CORE	Troubleshoot aircraft engine trailers
E4	CORE	Troubleshoot aircraft jacks
E4	CORE	Troubleshoot gaseous nitrogen support equipment
E4	CORE	Troubleshoot gaseous oxygen support equipment
E4	CORE	Troubleshoot hydraulic purification support equipment
E4	CORE	Troubleshoot Liquid Oxygen (LOX) support equipment
E4	CORE	Troubleshoot Material Handling Equipment (MHE)
E4	CORE	Troubleshoot support equipment hydraulic power supply
E4	CORE	Troubleshoot support equipment Hydraulic Servicing Units (HSU)

MANAGEMENT

<u>Paygrade</u>	<u>Task Type</u>	<u>Task Statements</u>
E7	CORE	Approve depot level corrosion treatment
E6	CORE	Coordinate depot level corrosion treatment
E5	CORE	Implement work center responsibilities (e.g. programs, qualifications, etc.)
E7	CORE	Manage curriculum development for Apprentice and Journeyman schools
E7	CORE	Manage depot level maintenance requirements
E6	CORE	Manage flight deck troubleshooter operations
E7	CORE	Manage Intermediate level maintenance requirements
E5	CORE	Manage material control assets
E6	CORE	Manage production control
E5	CORE	Manage support equipment asset inventories
E5	CORE	Manage support equipment issues and receipts
E5	CORE	Manage support equipment logs and records
E5	CORE	Manage support equipment operator training and licensing program
E7	CORE	Manage support equipment tool room operations
E6	CORE	Manage technical directives compliance programs
E5	CORE	Project scheduled maintenance reports
E7	CORE	Supervise production control
E6	CORE	Supervise support equipment operator training and licensing program
E6	CORE	Supervise support equipment tool room operations
E7	CORE	Supervise technical directives compliance programs
E6	CORE	Validate material control assets
E6	CORE	Validate support equipment logs and records
E7	CORE	Verify material control assets
E7	CORE	Verify support equipment logs and records

MECHANICAL MAINTENANCE

<u>Paygrade</u>	<u>Task Type</u>	<u>Task Statements</u>
E4	CORE	Maintain aircraft crash and salvage equipment
E4	CORE	Maintain Armament Weapons Support Equipment (AWSE)
E5	CORE	Repair aircraft crash and salvage equipment
E4	CORE	Repair Armament Weapons Support Equipment (AWSE)
E5	CORE	Test aircraft crash and salvage equipment
E4	CORE	Test Armament Weapons Support Equipment (AWSE)
E5	CORE	Troubleshoot aircraft crash and salvage equipment
E4	CORE	Troubleshoot Armament Weapons Support Equipment (AWSE)

QUALITY ASSURANCE

<u>Paygrade</u>	<u>Task Type</u>	<u>Task Statements</u>
E5	CORE	Inspect air conditioning and refrigeration equipment
E5	CORE	Inspect air conditioning and refrigeration reclaimer equipment
E5	CORE	Inspect aircraft crash and salvage equipment
E5	CORE	Inspect aircraft engine trailers
E5	CORE	Inspect aircraft jacks
E5	CORE	Inspect aircraft tow tractors
E5	CORE	Inspect Armament Weapons Support Equipment (AWSE)
E5	CORE	Inspect aviation Peculiar Support Equipment (PSE)
E5	CORE	Inspect Common Support Equipment (CSE)
E5	CORE	Inspect deicing equipment
E5	CORE	Inspect Environmental Control Unit (ECU)
E5	CORE	Inspect gas turbine engine
E5	CORE	Inspect gaseous nitrogen support equipment
E5	CORE	Inspect gaseous oxygen support equipment
E5	CORE	Inspect hydraulic purification support equipment
E5	CORE	Inspect hydraulic systems
E5	CORE	Inspect Liquid Oxygen (LOX) support equipment
E5	CORE	Inspect Material Handling Equipment (MHE)
E5	CORE	Inspect Mobile Electric Power Plant (MEPP)
E5	CORE	Inspect Mobile Maintenance Facility (MMF)
E5	CORE	Inspect Mobile Maintenance Facility (MMF) generator
E5	CORE	Inspect support equipment hydraulic power supply
E5	CORE	Inspect support equipment tire and wheel assemblies
E5	CORE	Inspect Weight Handling Equipment (WHE)
E5	CORE	Locate level site for Mobile Maintenance Facility (MMF)
E6	CORE	Manage Quality Assurance (QA) program
E6	CORE	Supervise hydraulic purification procedures
E7	CORE	Supervise Quality Assurance (QA) program
E5	CORE	Validate hydraulic fluid tests

TECHNICAL ADMINISTRATION

<u>Paygrade</u>	<u>Task Type</u>	<u>Task Statements</u>
E4	CORE	Document maintenance actions
E5	CORE	Validate discrepancy reports
E6	CORE	Verify discrepancy reports