

CHAPTER 16



BUILDER (BU)

NAVPERS 18068F-16H
Change 100

Updated: October 2024

TABLE OF CONTENTS
BUILDER (BU)

SCOPE OF RATING	BU-3
GENERAL INFORMATION	BU-4
BUILDER	BU-5
CARPENTRY	BU-5
CONCRETE CONSTRUCTION	BU-5
CONSTRUCTION MANAGEMENT	BU-6
EXTERIOR FINISHES AND MOISTURE PROTECTION	BU-7
FINISHES	BU-7
HEAVY CONSTRUCTION	BU-8
MASONRY CONSTRUCTION	BU-8
SPECIAL CONSTRUCTION	BU-8

NAVY ENLISTED OCCUPATIONAL STANDARD

FOR

BUILDER (BU)



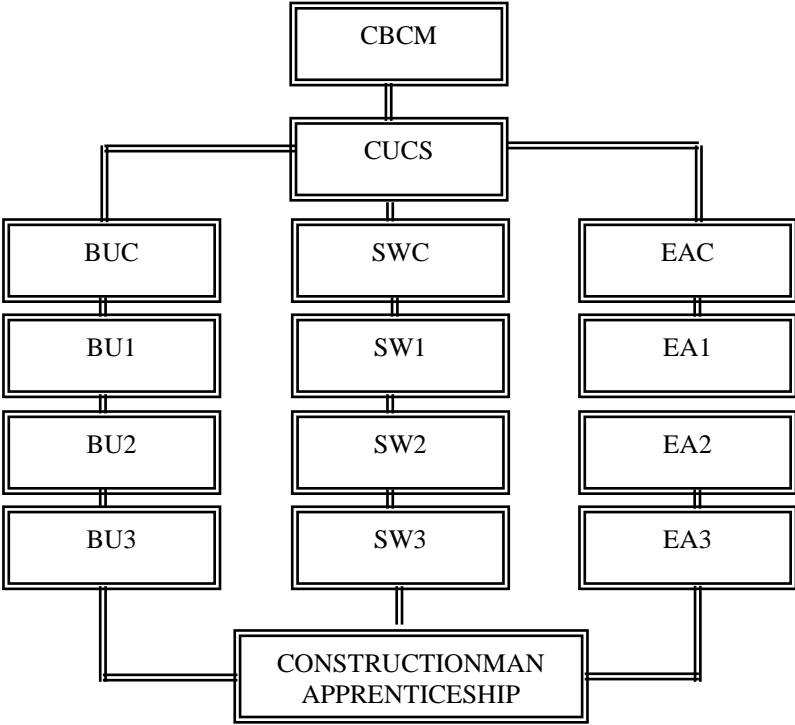
SCOPE OF RATING

Builders (BU) build and repair wood, metal, concrete and masonry structures; perform rough and finished carpentry; install interior and exterior finishes, perform paint and preservation; build and place forms; mix, place, and finish concrete; operate and maintain carpentry shops; build and repair airfields and waterfront structures; demolish existing structures; erect pre-engineered structures; plan and estimate material and labor in order to execute and manage construction projects; individual combat readiness; and perform tasks required in combat and Humanitarian Assistance Disaster Recovery (HADR) operations.

This Occupational Standard is to be incorporated in Volume I, Part B, of the Manual of Navy Enlisted Manpower and Personnel Classifications and Occupational Standards (NAVPERS 18068F) as Chapter 16.

GENERAL INFORMATION

CAREER PATTERN



Normal path of advancement to Chief Warrant Officer and Limited Duty Officer categories can be found in OPNAVINST 1420.1.

For rating entry requirements, refer to MILPERSMAN 1306-618.

SAFETY
The observance of Operational Risk Management (ORM) and proper safety precautions in all areas is an integral part of each billet and the responsibility of every Sailor; therefore, it is a universal requirement for all ratings.

*Career path updated to reflect rating name change to Seabee Master Chief (CBCM) – NAVADMIN 054/21 refers

Job Title
Builder

Job Code
002594

Job Family
 Construction and Extraction

NOC
 TBD

Short Title (30 Characters)
 BUILDER

Short Title (14 Characters)
 BUILDER

Pay Plan
 Enlisted

Career Field
 BU

Other Relationships and Rules
 NEC BXXX series and other NECs as assigned

Job Description

Builders (BU) build and repair wood, metal, concrete and masonry structures; perform rough and finished carpentry; install interior and exterior finishes; perform paint and preservation; build and place forms; mix, place, and finish concrete; operate and maintain carpentry shops; build and repair airfields and waterfront structures; demolish existing structures; erect pre-engineered structures; estimate material and labor in order to execute construction projects; prepare progress reports and time records; act as project managers while planning, staffing, directing, and controlling multiple construction projects to include problem solving, planning, estimating, scheduling, controlling cost, evaluating quality, and managing personnel; ensure compliance with drawings, drawing specifications, code requirements, and contracts; act as project supervisors and trainers for junior personnel; maintain combat readiness; and perform tasks required in combat and Humanitarian Assistance Disaster Recovery (HADR) operations.

DoD Relationship

Group Title *DoD Code*
 Construction, General 171000

O*NET Relationship

Occupation Title *SOC Code* *Job Family*
 Carpenters 47-2031.00 Construction and Extraction

Skills

Critical Thinking
Quality Control Analysis
Management of Personnel Resources
Equipment Selection
Coordination
Management of Material Resources
Operations Analysis
Complex Problem Solving
Reading Comprehension
Installation

Abilities

Information Ordering
Deductive Reasoning
Oral Expression
Problem Sensitivity
Inductive Reasoning
Manual Dexterity
Time Sharing
Spatial Orientation
Selective Attention
Written Comprehension

CARPENTRY

<u>Paygrade</u>	<u>Task Type</u>	<u>Task Statements</u>
E4	NON-CORE	Demolish carpentry
E5	NON-CORE	Develop carpentry demolition plans
E4	CORE	Develop carpentry shop drawings
E5	CORE	Fabricate finish carpentry
E4	CORE	Fabricate metal framing structures
E4	CORE	Fabricate rough carpentry
E4	CORE	Install finish carpentry
E4	CORE	Install metal framing structures
E5	CORE	Manage carpentry shop operations
E5	CORE	Supervise carpentry construction operations
E5	CORE	Supervise carpentry shop operations

CONCRETE CONSTRUCTION

<u>Paygrade</u>	<u>Task Type</u>	<u>Task Statements</u>
E4	CORE	Construct concrete forms
E5	CORE	Construct overhead and column forms
E4	NON-CORE	Demolish concrete construction

CONCRETE CONSTRUCTION (CONT'D)

<u>Paygrade</u>	<u>Task Type</u>	<u>Task Statements</u>
E4	CORE	Develop concrete construction shop drawings
E5	NON-CORE	Develop concrete demolition plans
E4	CORE	Establish building lines and elevations
E4	CORE	Fabricate Reinforcing Steel (RST)
E4	CORE	Finish concrete
E4	CORE	Install concrete forms
E4	CORE	Install embedment in form work
E5	CORE	Install pre-cast concrete structures (e.g., columns, retaining walls, grade beams, etc.)
E4	CORE	Install Reinforcing Steel (RST)
E6	CORE	Manage concrete operations
E4	CORE	Mix concrete
E4	CORE	Place concrete
E5	CORE	Supervise concrete mixing operations
E5	CORE	Supervise concrete placement and finishing
E5	CORE	Supervise overhead and column form construction
E6	NON-CORE	Supervise pre-cast concrete structure assembly operations

CONSTRUCTION MANAGEMENT

<u>Paygrade</u>	<u>Task Type</u>	<u>Task Statements</u>
E5	CORE	Conduct construction project turnovers
E6	NON-CORE	Conduct Three-Phase Quality Control inspections
E6	NON-CORE	Determine construction project contracts are executed in accordance with requirements
E4	CORE	Develop construction activity summary sheets
E4	CORE	Develop construction estimates
E5	CORE	Develop construction project packages
E4	CORE	Develop construction project shop drawings
E4	CORE	Develop construction safety plans
E4	CORE	Develop environmental protection plans
E5	CORE	Develop master activities listing
E5	CORE	Develop project Three-Phase Quality Control plans
E5	CORE	Establish construction site layouts
E4	NON-CORE	Input project data into construction management software and tools
E4	CORE	Inspect construction materials
E4	CORE	Interpret construction project drawings and specifications
E4	CORE	Inventory project tools and materials
E4	CORE	Lead construction project crews
E7	CORE	Manage construction project logistics and resources (i.e., tools, manpower, material, etc.)
E7	CORE	Manage construction projects
E7	NON-CORE	Manage construction safety plans

CONSTRUCTION MANAGEMENT (CONT'D)

<u>Paygrade</u>	<u>Task Type</u>	<u>Task Statements</u>
E6	CORE	Manage job site construction operations (e.g., Quality Control (QC) and safety plan implementation, job site information board, level III chart, etc.)
E7	NON-CORE	Manage project Quality Control (QC) plans
E7	NON-CORE	Manage Three-Phase Quality Control process (i.e., operations level)
E6	CORE	Supervise construction project crews
E5	NON-CORE	Supervise construction project safety operations
E5	NON-CORE	Supervise demolition operations
E5	NON-CORE	Supervise environmental protection plans
E5	NON-CORE	Supervise erection of scaffolding to support construction activities
E5	CORE	Supervise planning and estimating operations
E6	CORE	Supervise project Three-Phase Quality Control process
E6	CORE	Validate construction project packages
E6	CORE	Validate project surveys and elevation data

EXTERIOR FINISHES AND MOISTURE PROTECTION

<u>Paygrade</u>	<u>Task Type</u>	<u>Task Statements</u>
E4	NON-CORE	Demolish exterior finishes and moisture protection
E4	NON-CORE	Develop exterior finishes and moisture protection demolition plans
E4	CORE	Install building insulation materials
E4	CORE	Install exterior doors and hardware
E4	CORE	Install exterior wall finishes
E4	CORE	Install flashing
E4	CORE	Install roof specialties and accessories (e.g., ridge vents, penetrations, sky lights, etc.)
E4	CORE	Install roofing systems (i.e., metal roofing, rolled seamed roofing, architectural/asphalt shingles)
E4	CORE	Install windows and hardware
E5	CORE	Supervise roofing system installations

FINISHES

<u>Paygrade</u>	<u>Task Type</u>	<u>Task Statements</u>
E4	NON-CORE	Demolish finishes
E4	NON-CORE	Develop finishes demolition plans
E4	CORE	Develop interior finish shop drawings
E4	CORE	Finish drywall
E4	CORE	Install acoustical treatments
E4	CORE	Install building fixtures and hardware accessories
E4	CORE	Install drywall
E4	CORE	Install flooring materials
E4	CORE	Install interior doors and hardware
E4	CORE	Install interior wall finishes
E5	CORE	Supervise finish material installations

HEAVY CONSTRUCTION

<u>Paygrade</u>	<u>Task Type</u>	<u>Task Statements</u>
E4	NON-CORE	Construct heavy timber structures
E4	NON-CORE	Demolish heavy construction
E5	NON-CORE	Develop heavy construction demolition plans
E7	NON-CORE	Manage heavy construction operations
E6	NON-CORE	Supervise heavy construction projects

MASONRY CONSTRUCTION

<u>Paygrade</u>	<u>Task Type</u>	<u>Task Statements</u>
E4	CORE	Construct masonry structures
E4	NON-CORE	Demolish masonry construction
E4	NON-CORE	Develop masonry construction demolition plans
E4	CORE	Develop masonry construction shop drawings
E4	CORE	Install masonry hardware
E4	CORE	Mix mortar
E5	CORE	Supervise masonry construction operations

SPECIAL CONSTRUCTION

<u>Paygrade</u>	<u>Task Type</u>	<u>Task Statements</u>
E5	NON-CORE	Assess airfield damages
E4	NON-CORE	Construct bridging systems (i.e., Mabey Johnson, Medium Girder Bridge (MGB), heavy timber)
E5	NON-CORE	Construct non-standard bridging (i.e., gap crossing)
E4	NON-CORE	Demolish special construction
E4	NON-CORE	Develop special construction demolition plans
E4	NON-CORE	Erect K-Span structures
E4	CORE	Erect pre-engineered structures (i.e., tension fabric, pre-engineered buildings (PEB), fabricated steel buildings, steel towers, and antennas)
E4	CORE	Erect scaffolding to support construction activities
E4	NON-CORE	Erect waterfront piers
E4	NON-CORE	Fabricate cold-formed steel floor, wall, and roof assemblies
E4	NON-CORE	Install cold-formed steel framing components and prefabricated assemblies
E4	NON-CORE	Install cold-formed steel wall and roof sheathing
E5	NON-CORE	Launch bridging systems (i.e., Mabey Johnson, Medium Girder Bridge (MGB), heavy timber)
E7	NON-CORE	Manage Airfield Damage Repair (ADR) operations
E7	NON-CORE	Manage special construction assembly operations (i.e., tension fabric, pre-engineered buildings (PEB), fabricated steel buildings, steel towers, and antennas)
E7	NON-CORE	Manage waterfront pier construction operations
E5	NON-CORE	Perform locksmith operations
E6	NON-CORE	Plan Airfield Damage Repairs (ADR)
E5	NON-CORE	Plan Pier Damage Repairs (PDR)
E5	NON-CORE	Recover bridging systems (i.e., Mabey Johnson, Medium Girder Bridge (MGB), heavy timber)

SPECIAL CONSTRUCTION (CONT'D)

<u>Paygrade</u>	<u>Task Type</u>	<u>Task Statements</u>
E4	NON-CORE	Repair damaged airfields
E4	NON-CORE	Repair damaged piers
E6	NON-CORE	Supervise Airfield Damage Repair (ADR) operations
E6	NON-CORE	Supervise assembly and erection operations (i.e., tension fabric, pre-engineered buildings (PEB), fabricated steel buildings, steel towers, and antennas)
E6	NON-CORE	Supervise K-span erection operations
E6	NON-CORE	Supervise Pier Damage Repair (PDR) operations
E6	NON-CORE	Supervise pile driving construction operations
E6	NON-CORE	Supervise waterfront pier construction operations