

CHAPTER 18



CONSTRUCTION MECHANIC (CM)

NAVPERS 18068F-18H
Change 100

Updated: October 2024

TABLE OF CONTENTS
CONSTRUCTION MECHANIC (CM)

SCOPE OF RATING	CM-3
GENERAL INFORMATION	CM-4
CONSTRUCTION MECHANIC	CM-5
BODY SYSTEMS	CM-5
BRAKE SYSTEMS	CM-6
CHASSIS SYSTEMS	CM-6
CLIMATE CONTROL	CM-7
COOLING SYSTEMS	CM-7
EXPEDITIONARY CONSTRUCTION	CM-7
HYDRAULIC AND PNEUMATIC SYSTEMS	CM-8
INTERNAL COMBUSTION ENGINES	CM-8
POWER GENERATION	CM-8
POWER TRAIN	CM-9
STEERING AND SUSPENSION SYSTEMS	CM-9
TABLE OF ALLOWANCE (TOA) MANAGEMENT	CM-10
VEHICLE/EQUIPMENT ELECTRICAL SYSTEMS	CM-10
VEHICLE/EQUIPMENT ELECTRONIC AND DIAGNOSTIC SYSTEMS	CM-10
VEHICLE/EQUIPMENT FUEL SYSTEMS	CM-11
WEIGHT HANDLING EQUIPMENT	CM-11

NAVY ENLISTED OCCUPATIONAL STANDARD
FOR
CONSTRUCTION MECHANIC (CM)



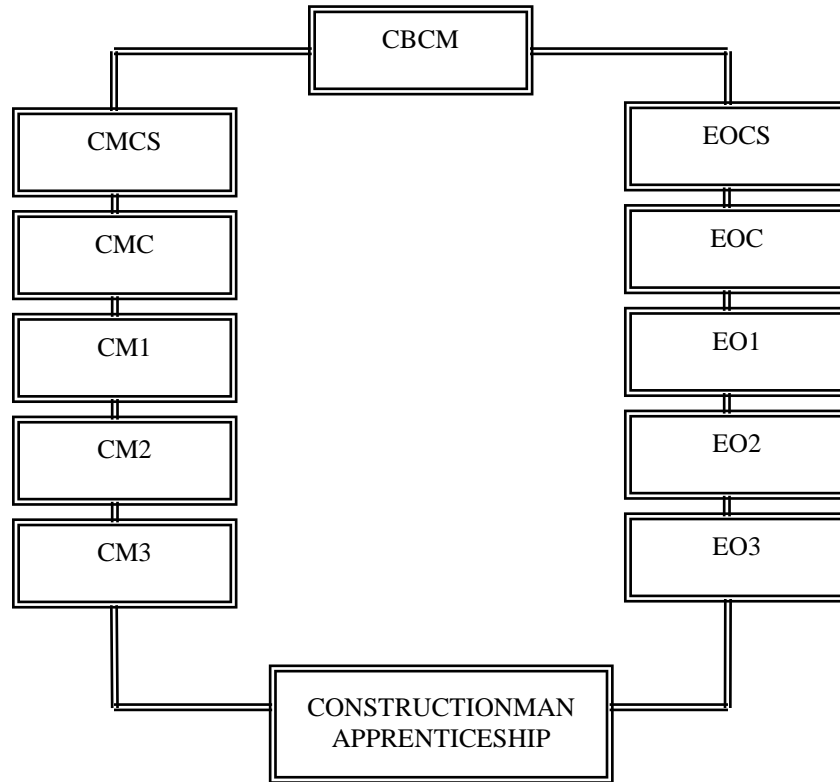
SCOPE OF RATING

Construction Mechanics (CM) perform, supervise, and document tasks involved in maintenance, diagnosis, repair, and overhaul of automotive, material/weight handling and construction equipment; research and manage of repair parts program; maintain records; train personnel in repair procedures; and maintain individual and equipment readiness.

This Occupational Standard is to be incorporated in Volume I, Part B, of the Manual of Navy Enlisted Manpower and Personnel Classifications and Occupational Standards (NAVPERS 18068F) in Chapter 18.

GENERAL INFORMATION

CAREER PATTERN



Normal path of advancement to Chief Warrant Officer and Limited Duty Officer categories can be found in OPNAVINST 1420.1.

For rating entry requirements, refer to MILPERSMAN 1306-618.

SAFETY

The observance of Operational Risk Management (ORM) and proper safety precautions in all areas is an integral part of each billet and the responsibility of every Sailor; therefore, it is a universal requirement for all ratings.

*Career path updated to reflect rating name change to Seabee Master Chief (CBCM) – NAVADMIN 054/21 refers

Job Title**Construction Mechanic****Job Code****002604****Job Family**

Installation, Maintenance, and Repair

NOC

TBD

Short Title (30 Characters)

CONSTRUCTION MECHANIC

Short Title (14 Characters)

CONSTRUCT MECH

Pay Plan

Enlisted

Career Field

CM

Other Relationships and Rules

NECs BXXX series and other NECs as assigned

Job Description

Construction Mechanics (CM) perform, supervise, and document tasks involved in maintenance, diagnosis, repair, and overhaul of automotive, material/weight handling and construction equipment; research and manage repair parts program; maintain records; train personnel in repair procedures; maintain equipment and combat readiness; act as shop supervisors, planning, staffing, directing, and controlling multiple work centers to include problem-solving, planning, scheduling, and managing personnel while ensuring compliance with specifications, code requirements, plans, and contracts.

DoD Relationship**Group Title**

Construction Equipment

DoD Code

161200

O*NET Relationship**Occupation Title**Automotive Service Technicians
and Mechanics**SOC Code**

49-3023.01

Job FamilyInstallation, Maintenance, and
Repair**Skills***Systems Evaluation**Repairing**Troubleshooting**Equipment Selection**Installation**Equipment Maintenance**Systems Analysis**Operation Monitoring**Management of Material Resources**Management of Personnel Resources***Abilities***Written Comprehension**Multi-limb Coordination**Problem Sensitivity**Written Expression**Inductive Reasoning**Control Precision**Perceptual Speed**Manual Dexterity**Oral Expression**Finger Dexterity***BODY SYSTEMS****Paygrade****Task Type****Task Statements**

E4

CORE

Adjust body system components

E4

CORE

Conduct corrosion prevention and control procedures

E4

CORE

Conduct preventive maintenance on body systems

E4

NON-CORE

Conduct preventive maintenance on force protection materials

E5

CORE

Inspect body systems/components

E5

NON-CORE

Inspect force protection materials on vehicles

E4

NON-CORE

Install force protection materials on vehicles

E5

NON-CORE

Paint body components

E4

CORE

Perform oxygen/gas cutting and heat treatment

E4

NON-CORE

Prepare surfaces for painting

E4

CORE

Repair body systems/components

E5

NON-CORE

Repair equipment body damages

E4

CORE

Replace body system components

E4

NON-CORE

Replace force protection materials on vehicles

E4

CORE

Research body system/component repair parts

E4

CORE

Troubleshoot body systems/components

E5

CORE

Verify replacement of force protection materials

E4

NON-CORE

Weld ferrous/non-ferrous metals

BRAKE SYSTEMS

<u>Paygrade</u>	<u>Task Type</u>	<u>Task Statements</u>
E4	CORE	Adjust electrical brake system components
E4	CORE	Adjust hydraulic brake system components
E4	CORE	Adjust mechanical brake system components
E4	CORE	Adjust pneumatic brake system components
E4	CORE	Conduct preventive maintenance on anti-lock brake systems
E4	CORE	Conduct preventive maintenance on electrical brake system components
E4	CORE	Conduct preventive maintenance on hydraulic brake systems
E4	CORE	Conduct preventive maintenance on mechanical brake systems
E4	CORE	Conduct preventive maintenance on pneumatic brake systems
E5	CORE	Inspect anti-lock brake systems/components
E5	CORE	Inspect electrical brake system components
E5	CORE	Inspect hydraulic brake systems/components
E5	CORE	Inspect mechanical brake systems/components
E5	CORE	Inspect pneumatic brake systems/components
E4	CORE	Repair anti-lock brake system components
E4	CORE	Repair electrical brake system components
E4	CORE	Repair hydraulic brake systems/components
E4	CORE	Repair mechanical brake systems/components
E4	CORE	Repair pneumatic brake systems/components
E4	CORE	Replace anti-lock brake system components
E4	CORE	Replace electrical brake system components
E4	CORE	Replace hydraulic brake system components
E4	CORE	Replace mechanical brake system components
E4	CORE	Replace pneumatic brake system components
E4	CORE	Research brake system/component repair parts
E5	CORE	Troubleshoot anti-lock brake systems/components
E4	CORE	Troubleshoot electrical brake system components
E4	CORE	Troubleshoot hydraulic brake systems/components
E4	CORE	Troubleshoot mechanical brake systems/components
E4	CORE	Troubleshoot pneumatic brake systems/components

CHASSIS SYSTEMS

<u>Paygrade</u>	<u>Task Type</u>	<u>Task Statements</u>
E4	CORE	Adjust track components
E4	CORE	Assemble wheel and tire assemblies/components
E4	CORE	Balance wheel and tire assemblies/components
E4	CORE	Conduct preventive maintenance on track components
E4	CORE	Conduct preventive maintenance on wheel and tire assemblies/components
E5	CORE	Inspect track components
E5	CORE	Inspect wheel and tire assemblies/components

CHASSIS SYSTEMS (CONT'D)

<u>Paygrade</u>	<u>Task Type</u>	<u>Task Statements</u>
E5	CORE	Repair track components
E4	CORE	Repair wheel and tire assemblies/components
E5	CORE	Replace track components
E4	CORE	Replace wheel and tire assemblies/components
E4	CORE	Research chassis system/component repair parts
E5	CORE	Troubleshoot track components
E4	CORE	Troubleshoot wheel and tire assemblies/components

CLIMATE CONTROL

<u>Paygrade</u>	<u>Task Type</u>	<u>Task Statements</u>
E4	CORE	Conduct preventive maintenance on heating systems
E4	CORE	Conduct preventive maintenance on ventilation systems
E5	CORE	Inspect air conditioning systems/components
E5	CORE	Inspect heating systems/components
E5	CORE	Inspect ventilation systems/components
E5	CORE	Repair air conditioning systems/components
E4	CORE	Repair heating systems/components
E4	CORE	Repair ventilation system components
E4	CORE	Repair ventilation systems/components
E5	CORE	Replace air conditioning system components
E4	CORE	Replace heating system components
E4	CORE	Replace ventilation system components
E5	CORE	Troubleshoot air conditioning systems/components
E4	CORE	Troubleshoot heating systems/components
E4	CORE	Troubleshoot ventilation systems/components

COOLING SYSTEMS

<u>Paygrade</u>	<u>Task Type</u>	<u>Task Statements</u>
E4	CORE	Conduct preventive maintenance on cooling systems
E5	CORE	Inspect cooling systems/components
E4	CORE	Repair cooling systems/components
E4	CORE	Replace cooling system components
E4	CORE	Research cooling system/component repair parts
E4	CORE	Troubleshoot cooling systems/components

EXPEDITIONARY CONSTRUCTION

<u>Paygrade</u>	<u>Task Type</u>	<u>Task Statements</u>
E5	NON-CORE	Assess airfield damages
E5	NON-CORE	Assess pier damages
E4	NON-CORE	Construct expeditionary medical facilities
E6	NON-CORE	Maintain expeditionary medical facilities
E5	NON-CORE	Plan Airfield Damage Repairs (ADR)

EXPEDITIONARY CONSTRUCTION (CONT'D)

<u>Paygrade</u>	<u>Task Type</u>	<u>Task Statements</u>
E5	NON-CORE	Plan Pier Damage Repairs (PDR)
E4	NON-CORE	Repair damaged airfields
E4	NON-CORE	Repair damaged piers
E7	NON-CORE	Supervise Airfield Damage Repair (ADR) operations
E7	NON-CORE	Supervise Pier Damage Repair (PDR) operations

HYDRAULIC AND PNEUMATIC SYSTEMS

<u>Paygrade</u>	<u>Task Type</u>	<u>Task Statements</u>
E5	CORE	Adjust hydraulic system components
E5	CORE	Adjust pneumatic system components
E4	CORE	Conduct preventive maintenance on hydraulic systems
E4	CORE	Conduct preventive maintenance on pneumatic systems
E5	CORE	Inspect hydraulic systems/components
E5	CORE	Inspect pneumatic systems/components
E4	CORE	Repair hydraulic systems/components
E4	CORE	Repair pneumatic systems/components
E4	CORE	Replace hydraulic system components
E4	CORE	Replace pneumatic system components
E4	CORE	Research hydraulic and pneumatic system/component repair parts
E5	CORE	Troubleshoot hydraulic systems/components
E5	CORE	Troubleshoot pneumatic systems/components

INTERNAL COMBUSTION ENGINES

<u>Paygrade</u>	<u>Task Type</u>	<u>Task Statements</u>
E5	CORE	Adjust Internal Combustion Engine (ICE) system components
E4	CORE	Conduct preventive maintenance on emission systems
E4	CORE	Conduct preventive maintenance on Internal Combustion Engine (ICE) systems
E5	CORE	Inspect emission systems/components
E5	CORE	Inspect Internal Combustion Engine (ICE) systems/components
E4	CORE	Repair emission systems/components
E4	CORE	Repair Internal Combustion Engine (ICE) systems/components
E4	CORE	Replace emission system components
E4	CORE	Replace Internal Combustion Engine (ICE) system components
E4	CORE	Research Internal Combustion Engine (ICE) repair parts
E5	CORE	Troubleshoot emission systems/components
E5	CORE	Troubleshoot Internal Combustion Engine (ICE) systems/components

POWER GENERATION

<u>Paygrade</u>	<u>Task Type</u>	<u>Task Statements</u>
E5	CORE	Adjust power generation components
E5	CORE	Inspect power generation components
E5	CORE	Perform generator operational load tests

POWER GENERATION (CONT'D)

<u>Paygrade</u>	<u>Task Type</u>	<u>Task Statements</u>
E5	CORE	Repair power generation components
E4	CORE	Replace power generation components
E4	CORE	Research power generation system/component repair parts
E5	CORE	Troubleshoot power generation systems/components

POWER TRAIN

<u>Paygrade</u>	<u>Task Type</u>	<u>Task Statements</u>
E4	CORE	Adjust auxiliary system components
E4	CORE	Adjust drivetrain systems/components
E4	CORE	Conduct preventive maintenance on auxiliary systems
E4	CORE	Conduct preventive maintenance on drivetrain systems
E5	CORE	Inspect auxiliary systems/components
E5	CORE	Inspect drivetrain systems/components
E4	CORE	Install auxiliary system components
E4	CORE	Repair auxiliary system components
E4	CORE	Repair drivetrain systems/components
E4	CORE	Replace auxiliary system components
E4	CORE	Replace drivetrain components
E4	CORE	Research powertrain system/component repair parts
E5	CORE	Troubleshoot auxiliary systems/components
E5	CORE	Troubleshoot drivetrain systems/components

STEERING AND SUSPENSION SYSTEMS

<u>Paygrade</u>	<u>Task Type</u>	<u>Task Statements</u>
E4	CORE	Adjust steering system components
E4	CORE	Adjust suspension system components
E4	CORE	Conduct preventive maintenance on automotive suspension systems
E4	CORE	Conduct preventive maintenance on heavy equipment suspension systems
E4	CORE	Conduct preventive maintenance on steering systems
E5	CORE	Inspect steering systems/components
E5	CORE	Inspect suspension system/components
E4	CORE	Repair steering systems/components
E4	CORE	Repair suspension system/components
E4	CORE	Replace steering system components
E4	CORE	Replace suspension system components
E4	CORE	Research steering and suspension system/component repair parts
E4	CORE	Troubleshoot steering systems/components
E4	CORE	Troubleshoot suspension systems/components

TABLE OF ALLOWANCE (TOA) MANAGEMENT

<u>Paygrade</u>	<u>Task Type</u>	<u>Task Statements</u>
E5	CORE	Conduct maintenance administration operations
E4	CORE	Document maintenance actions
E6	CORE	Inspect technical libraries
E6	CORE	Inspect tool room programs
E4	CORE	Inspect tools
E4	CORE	Maintain technical libraries
E4	CORE	Maintain tools and tool room programs
E7	CORE	Manage equipment maintenance programs
E4	CORE	Manage equipment parts acquisitions, inventories, and distributions
E7	CORE	Manage equipment turnover process
E6	CORE	Manage equipment work center programs
E7	CORE	Manage tool room operations
E6	CORE	Review equipment Table of Allowance (TOA) items
E6	CORE	Supervise equipment turnover process
E5	CORE	Supervise equipment work center operations
E6	CORE	Supervise maintenance shop operations

VEHICLE/EQUIPMENT ELECTRICAL SYSTEMS

<u>Paygrade</u>	<u>Task Type</u>	<u>Task Statements</u>
E4	CORE	Conduct preventive maintenance on electrical components
E5	CORE	Inspect electrical systems/components
E4	CORE	Install electrical systems/components
E4	CORE	Repair electrical systems/components
E4	CORE	Research equipment electrical system/component repair parts
E4	CORE	Troubleshoot electrical systems/components

VEHICLE/EQUIPMENT ELECTRONIC AND DIAGNOSTIC SYSTEMS

<u>Paygrade</u>	<u>Task Type</u>	<u>Task Statements</u>
E4	CORE	Calibrate electronic system parameters and components (e.g., Throttle Position Sensor (TPS), arranging sensors, articulation angle sensors, injection systems, etc.)
E4	CORE	Conduct preventive maintenance on electronic components
E5	CORE	Inspect electronic systems/components
E5	CORE	Program Electronic Control Modules (ECM)
E5	CORE	Repair electronic systems/components
E4	CORE	Replace electronic components
E5	CORE	Replace Electronic Control Modules (ECM)
E4	CORE	Research electronic and diagnostic system/component repair parts
E5	CORE	Test Electronic Control Modules (ECM)
E4	CORE	Test electronic systems/components
E4	CORE	Troubleshoot Electronic Control Modules (ECM)
E5	CORE	Troubleshoot electronic systems/components

VEHICLE/EQUIPMENT FUEL SYSTEMS

<u>Paygrade</u>	<u>Task Type</u>	<u>Task Statements</u>
E5	CORE	Adjust fuel system components
E4	CORE	Conduct preventive maintenance on fuel systems
E5	CORE	Inspect fuel systems/components
E4	CORE	Repair fuel systems/components
E4	CORE	Replace fuel system components
E4	CORE	Research equipment fuel system/component repair parts
E5	CORE	Troubleshoot fuel systems/components

WEIGHT HANDLING EQUIPMENT MAINTENANCE

<u>Paygrade</u>	<u>Task Type</u>	<u>Task Statements</u>
E5	NON-CORE	Adjust crane systems
E5	NON-CORE	Conduct preventive maintenance on crane systems
E5	NON-CORE	Inspect crane systems
E7	CORE	Manage crane maintenance programs
E5	NON-CORE	Repair crane systems
E5	NON-CORE	Replace crane systems
E6	CORE	Supervise crane maintenance program operations
E5	NON-CORE	Troubleshoot crane systems