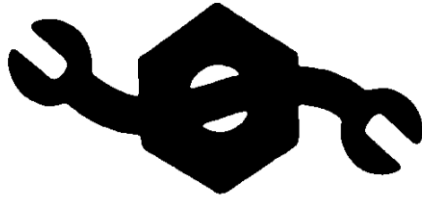


CHAPTER 18



CONSTRUCTION MECHANIC (CM)

NAVPERS 18068F-18G
Change 88

Updated: October 2021

TABLE OF CONTENTS
CONSTRUCTION MECHANIC (CM)

SCOPE OF RATING	CM-3
GENERAL INFORMATION	CM-4
CONSTRUCTION MECHANIC	CM-5
BODY SYSTEMS	CM-5
BRAKE SYSTEMS	CM-6
CHASSIS SYSTEMS	CM-6
CLIMATE CONTROL	CM-7
COOLING SYSTEMS	CM-7
HYDRAULIC AND PNEUMATIC SYSTEMS	CM-7
INTERNAL COMBUSTION ENGINES	CM-8
POWER GENERATION	CM-8
POWER TRAIN	CM-8
STEERING AND SUSPENSION SYSTEMS	CM-9
TABLE OF ALLOWANCE (TOA) MANAGEMENT	CM-9
VEHICLE/EQUIPMENT ELECTRICAL SYSTEMS	CM-9
VEHICLE/EQUIPMENT ELECTRONIC AND DIAGNOSTIC SYSTEMS	CM-10
VEHICLE/EQUIPMENT FUEL SYSTEMS	CM-10
WEIGHT HANDLING EQUIPMENT	CM-10

NAVY ENLISTED OCCUPATIONAL STANDARD

FOR

CONSTRUCTION MECHANIC (CM)



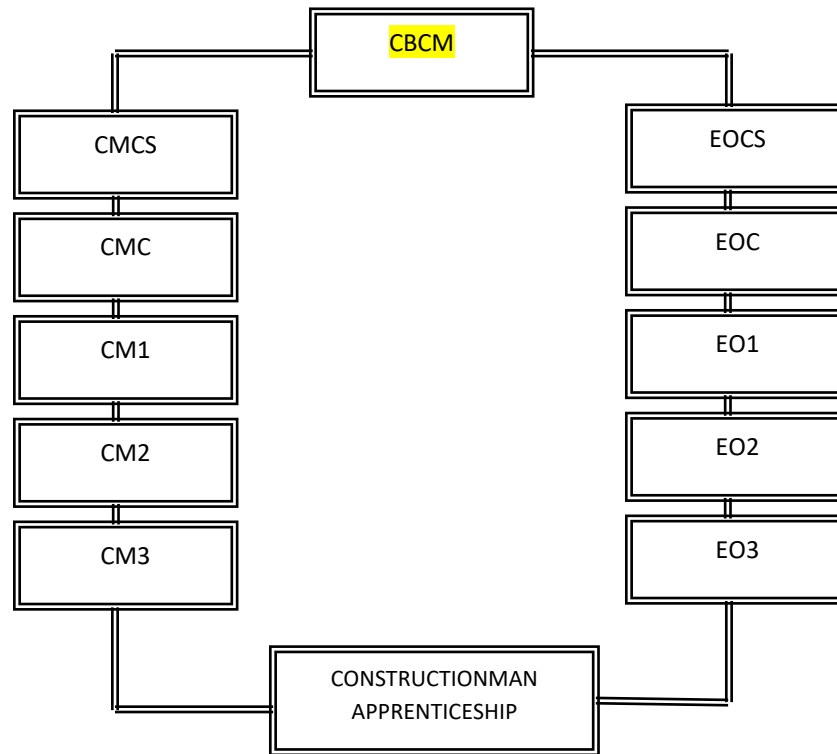
SCOPE OF RATING

Construction Mechanics (CM) perform, supervise, and document tasks involved in maintenance, diagnosis, repair, and overhaul of automotive, material/weight handling and construction equipment; research and requisition repair parts; maintain records; train personnel in repair procedures; maintain individual and equipment readiness to perform combat and Humanitarian Assistance Disaster Recovery (HADR) operations.

This Occupational Standard is to be incorporated in Volume I, Part B, of the Manual of Navy Enlisted Manpower and Personnel Classifications and Occupational Standards (NAVPERS 18068F) as Chapter 18.

GENERAL INFORMATION

CAREER PATTERN



Normal path of advancement to Chief Warrant Officer and Limited Duty Officer categories can be found in OPNAVINST 1420.1.

For rating entry requirements, refer to MILPERSMAN 1306-618.

SAFETY

The observance of Operational Risk Management (ORM) and proper safety precautions in all areas is an integral part of each billet and the responsibility of every Sailor; therefore, it is a universal requirement for all ratings.

* Career path updated to reflect rating name change to Seabee Master Chief (CBCM) – NAVADMIN 054/21 refers

Job Title**Construction Mechanic****Job Code****002604****Job Family**

Installation, Maintenance, and Repair

NOC

TBD

Short Title (30 Characters)

CONSTRUCTION MECHANIC

Short Title (14 Characters)

CONSTRUCT MECH

Pay Plan

Enlisted

Career Field

CM

Other Relationships and Rules

NEC BXXX series, 717B, 718B, 804G, 833A and other NECs as assigned

Job Description

Construction Mechanics (CM) perform, supervise, and document tasks involved in maintenance, diagnosis, repair, and overhaul of automotive, material/weight handling and construction equipment; research and requisition repair parts; maintain records; train personnel in repair procedures; maintain individual and equipment readiness to perform combat and Humanitarian Assistance Disaster Recovery (HADR) operations. As shop supervisors, they plan, staff, direct, and control multiple work centers to include problem solving, planning, scheduling, cost control and personnel management ensuring compliance with specifications, code requirements, plans, and contracts.

DoD RelationshipGroup Title

Construction Equipment

DoD Code

161200

O*NET RelationshipOccupation Title

Automotive Master Mechanics

SOC Code

49-3023.01

Job Family

Installation, Maintenance, and Repair

Skills

Systems Evaluation
 Operation Monitoring
 Equipment Selection
 Systems Analysis
 Installation
 Quality Control Analysis
 Equipment Maintenance
 Repairing
 Troubleshooting
 Reading Comprehension

Abilities

Written Comprehension
 Multi-limb Coordination
 Perceptual Speed
 Problem Sensitivity
 Written Expression
 Inductive Reasoning
 Control Precision
 Arm-Hand Steadiness
 Information Ordering
 Oral Expression

BODY SYSTEMS**Paygrade****Task Type****Task Statements**

E4	CORE	Adjust body systems/components
E4	CORE	Conduct preventive maintenance on body systems/components
E4	NON-CORE	Conduct preventive maintenance on force protection materials
E5	CORE	Inspect body systems/components
E5	NON-CORE	Inspect force protection materials on vehicles
E4	NON-CORE	Install force protection materials on vehicles
E5	CORE	Paint body components and panel repair
E4	CORE	Perform corrosion prevention and control procedures
E5	NON-CORE	Perform oxygen/gas cutting and welding
E4	CORE	Prepare surfaces for painting
E4	CORE	Repair body systems/components
E5	NON-CORE	Repair vehicle body damage
E4	CORE	Replace body systems/components
E4	NON-CORE	Replace force protection materials on vehicles
E4	CORE	Research body systems/components repair parts
E5	CORE	Troubleshoot body systems/components
E5	NON-CORE	Weld ferrous/non-ferrous metals

BRAKE SYSTEMS

<u>Paygrade</u>	<u>Task Type</u>	<u>Task Statements</u>
E4	CORE	Adjust brake system components (i.e., mechanical and electrical)
E4	CORE	Adjust hydraulic brake system components
E4	CORE	Adjust pneumatic brake system components
E4	CORE	Conduct preventive maintenance on anti-lock brake system components
E4	CORE	Conduct preventive maintenance on brake system components (i.e., mechanical and electrical)
E4	CORE	Conduct preventive maintenance on hydraulic brake system components
E4	CORE	Conduct preventive maintenance on pneumatic brake system components
E5	CORE	Inspect anti-lock brake system components
E5	CORE	Inspect brake system components (i.e., mechanical and electrical)
E5	CORE	Inspect hydraulic brake system components
E5	CORE	Inspect pneumatic brake system components
E4	CORE	Repair brake system components (i.e., mechanical and electrical)
E4	CORE	Repair hydraulic brake system components
E4	CORE	Repair pneumatic brake system components
E4	CORE	Replace anti-lock brake system components
E4	CORE	Replace brake system components (i.e., mechanical and electrical)
E4	CORE	Replace hydraulic brake system components
E4	CORE	Replace pneumatic brake system components
E4	CORE	Research brake systems/components repair parts
E5	CORE	Troubleshoot anti-lock brake system components
E5	CORE	Troubleshoot brake system components (i.e., mechanical and electrical)
E5	CORE	Troubleshoot hydraulic brake system components
E5	CORE	Troubleshoot pneumatic brake system components

CHASSIS SYSTEMS

<u>Paygrade</u>	<u>Task Type</u>	<u>Task Statements</u>
E4	CORE	Adjust track components
E4	CORE	Assemble wheel and tire assemblies/components
E4	CORE	Balance wheel and tire assemblies/components
E4	CORE	Conduct preventive maintenance on track components
E4	CORE	Conduct preventive maintenance on wheel and tire assemblies/components
E5	CORE	Inspect track components
E5	CORE	Inspect wheel and tire assemblies/components
E5	CORE	Repair track components
E4	CORE	Repair wheel and tire assemblies/components
E5	CORE	Replace track components
E4	CORE	Replace wheel and tire assemblies/components
E4	CORE	Research chassis systems/components repair parts
E5	CORE	Troubleshoot track components
E4	CORE	Troubleshoot wheel and tire assemblies/components

CLIMATE CONTROL

<u>Paygrade</u>	<u>Task Type</u>	<u>Task Statements</u>
E4	CORE	Conduct preventive maintenance on heating systems/components
E4	CORE	Conduct preventive maintenance on ventilation systems/components
E5	CORE	Inspect air conditioning systems/components
E5	CORE	Inspect heating systems/components
E4	CORE	Inspect ventilation systems/components
E5	CORE	Repair air conditioning systems/components
E4	CORE	Repair heating systems/components
E5	CORE	Repair ventilation systems/components
E5	CORE	Replace air conditioning systems/components
E4	CORE	Replace heating systems/components
E5	CORE	Replace ventilation systems/components
E4	CORE	Research climate control systems/components repair parts
E5	CORE	Troubleshoot air conditioning systems/components
E4	CORE	Troubleshoot heating systems/components
E5	CORE	Troubleshoot ventilation systems/components

COOLING SYSTEMS

<u>Paygrade</u>	<u>Task Type</u>	<u>Task Statements</u>
E4	CORE	Conduct preventive maintenance on cooling systems/components
E5	CORE	Inspect cooling systems/components
E4	CORE	Repair cooling systems/components
E4	CORE	Replace cooling systems/components
E4	CORE	Research cooling systems/components repair parts
E5	CORE	Troubleshoot cooling systems/components

HYDRAULIC AND PNEUMATIC SYSTEMS

<u>Paygrade</u>	<u>Task Type</u>	<u>Task Statements</u>
E5	CORE	Adjust hydraulic systems/components
E5	CORE	Adjust pneumatic systems/components
E4	CORE	Conduct preventive maintenance on hydraulic systems/components
E4	CORE	Conduct preventive maintenance on pneumatic systems/components
E5	CORE	Inspect hydraulic systems/components
E5	CORE	Inspect pneumatic systems/components
E4	CORE	Repair hydraulic systems/components
E4	CORE	Repair pneumatic systems/components
E4	CORE	Replace hydraulic systems/components
E4	CORE	Replace pneumatic systems/components
E4	CORE	Research hydraulic and pneumatic systems/components repair parts
E5	CORE	Troubleshoot hydraulic systems/components
E5	CORE	Troubleshoot pneumatic systems/components

INTERNAL COMBUSTION ENGINES

<u>Paygrade</u>	<u>Task Type</u>	<u>Task Statements</u>
E5	CORE	Adjust internal combustion engine systems/components
E4	CORE	Conduct preventive maintenance on emission systems
E4	CORE	Conduct preventive maintenance on internal combustion engine systems/components
E5	CORE	Inspect emission systems
E5	CORE	Inspect internal combustion engine systems/components
E4	CORE	Repair emission systems
E4	CORE	Repair internal combustion engine systems/components
E4	CORE	Replace emission systems
E4	CORE	Replace internal combustion engine systems/components
E4	CORE	Research internal combustion engine systems/components repair parts
E5	CORE	Troubleshoot emission systems
E5	CORE	Troubleshoot internal combustion engine systems/components

POWER GENERATION

<u>Paygrade</u>	<u>Task Type</u>	<u>Task Statements</u>
E5	NON-CORE	Adjust power generation components
E5	NON-CORE	Inspect power generation components
E5	NON-CORE	Perform generator operational load tests
E5	NON-CORE	Repair power generation components
E4	NON-CORE	Replace power generation components
E4	NON-CORE	Research power generation systems/components repair parts
E5	NON-CORE	Troubleshoot power generation components

POWER TRAIN

<u>Paygrade</u>	<u>Task Type</u>	<u>Task Statements</u>
E4	CORE	Adjust auxiliary system components
E4	CORE	Conduct preventive maintenance on auxiliary system components
E4	CORE	Conduct preventive maintenance on drive train components
E5	CORE	Inspect auxiliary system components
E5	CORE	Inspect drive train components
E5	CORE	Install auxiliary system components
E4	CORE	Repair auxiliary system components
E4	CORE	Repair drive train components
E4	CORE	Replace auxiliary system components
E4	CORE	Replace drive train components
E4	CORE	Research power train systems/components repair parts
E5	CORE	Troubleshoot auxiliary system components
E5	CORE	Troubleshoot drive train components

STEERING AND SUSPENSION SYSTEMS

<u>Paygrade</u>	<u>Task Type</u>	<u>Task Statements</u>
E5	CORE	Adjust steering systems/components
E4	CORE	Adjust suspension system/components
E4	CORE	Conduct preventive maintenance on automotive suspension systems/components
E4	CORE	Conduct preventive maintenance on heavy equipment suspension system/components
E4	CORE	Conduct preventive maintenance on steering systems/components
E5	CORE	Inspect steering systems/components
E5	CORE	Inspect suspension system/components
E4	CORE	Repair steering systems/components
E4	CORE	Repair suspension system/components
E4	CORE	Replace steering systems/components
E4	CORE	Replace suspension system/components
E4	CORE	Research steering and suspension systems/components repair parts
E5	CORE	Troubleshoot steering systems/components
E5	CORE	Troubleshoot suspension systems

TABLE OF ALLOWANCE (TOA) MANAGEMENT

<u>Paygrade</u>	<u>Task Type</u>	<u>Task Statements</u>
E6	CORE	Inspect technical libraries
E6	CORE	Inspect tool room program
E4	CORE	Inspect tools
E4	CORE	Maintain technical libraries
E4	CORE	Maintain tools and tool room programs
E7	CORE	Manage Battalion Equipment Evaluation Program (BEEP)
E7	CORE	Manage equipment maintenance programs
E7	CORE	Manage tool room operations
E6	CORE	Review Civil Engineer Support Equipment (CESE) table of allowance items
E6	CORE	Supervise Battalion Equipment Evaluation Program (BEEP)
E6	CORE	Supervise Inactive Equipment Maintenance (IEM) program
E6	CORE	Supervise maintenance shop operations

VEHICLE/EQUIPMENT ELECTRICAL SYSTEMS

<u>Paygrade</u>	<u>Task Type</u>	<u>Task Statements</u>
E5	CORE	Adjust electrical components (i.e., generator frequency, voltage, and amperage adjustments)
E4	CORE	Conduct preventive maintenance on electrical components
E5	CORE	Inspect electrical systems/components
E4	CORE	Install electrical systems/components
E4	CORE	Repair electrical systems/components
E4	CORE	Research vehicle/equipment electrical systems/components repair parts
E4	CORE	Troubleshoot electrical systems/components

VEHICLE/EQUIPMENT ELECTRONIC AND DIAGNOSTIC SYSTEMS

<u>Paygrade</u>	<u>Task Type</u>	<u>Task Statements</u>
E5	CORE	Adjust electronic system parameters and components (i.e., Throttle Position Sensor (TPS), arranging sensors, articulation angle sensors, injection systems, etc.)
E4	CORE	Conduct preventive maintenance on electronic components
E5	CORE	Inspect electronic systems/components
E5	CORE	Repair electronic systems/components
E4	CORE	Replace electronic components
E5	CORE	Replace Electronic Control Modules (ECM)
E4	CORE	Research vehicle/equipment electronic and diagnostic systems/components repair parts
E5	CORE	Test electronic systems
E5	CORE	Troubleshoot Electronic Control Module (ECM)
E5	CORE	Troubleshoot electronic systems/components

VEHICLE/EQUIPMENT FUEL SYSTEMS

<u>Paygrade</u>	<u>Task Type</u>	<u>Task Statements</u>
E5	CORE	Adjust fuel systems/components
E5	CORE	Assemble fuel systems/components
E4	CORE	Conduct preventive maintenance on fuel systems/components
E5	CORE	Inspect fuel systems/components
E4	CORE	Repair fuel systems/components
E4	CORE	Replace fuel systems/components
E4	CORE	Research vehicle/equipment fuel systems/components repair parts
E5	CORE	Troubleshoot fuel systems/components

WEIGHT HANDLING EQUIPMENT MAINTENANCE

<u>Paygrade</u>	<u>Task Type</u>	<u>Task Statements</u>
E5	NON-CORE	Adjust crane systems
E5	NON-CORE	Conduct preventive maintenance on crane systems
E5	NON-CORE	Inspect crane systems
E7	CORE	Manage crane maintenance programs
E5	NON-CORE	Repair crane systems
E5	NON-CORE	Replace crane systems
E5	NON-CORE	Research weight handling equipment maintenance repair parts
E6	CORE	Supervise crane maintenance program operations
E5	NON-CORE	Troubleshoot crane systems