

CHAPTER 20



CRYPTOLOGIC TECHNICIAN (MAINTENANCE) (CTM)

NAVPERS 18068-20M
Change 93

Updated: January 2023

TABLE OF CONTENTS

CRYPTOLOGIC TECHNICIAN (MAINTENANCE) (CTM)

SCOPE OF RATING	CTM-4
GENERAL INFORMATION	CTM-5
CRYPTOLOGIC SYSTEMS MAINTENANCE TECHNICIAN	CTM-6
COMMUNICATIONS	CTM-6
CRYPTOLOGIC ELECTRONIC MAINTENANCE	CTM-7
CRYPTOLOGIC MAINTENANCE ADMINISTRATION	CTM-7
CRYPTOLOGIC MAINTENANCE MANAGEMENT	CTM-8
CRYPTOLOGIC SYSTEMS SUPPORT	CTM-8
GENERAL INSTALLATION	CTM-8
INFORMATION ASSURANCE	CTM-8
SECURITY AND ADMINISTRATION	CTM-8
SENSITIVE COMPARTMENTED INFORMATION (SCI) SYSTEMS/NETWORK ADMINISTRATION	CTM-9
CRYPTOLOGIC SYSTEMS MAINTENANCE DIRECTOR	CTM-11
COMMUNICATIONS	CTM-11
CRYPTOLOGIC ELECTRONIC MAINTENANCE	CTM-11
CRYPTOLOGIC MAINTENANCE ADMINISTRATION	CTM-11
CRYPTOLOGIC MAINTENANCE MANAGEMENT	CTM-12
GENERAL INSTALLATION	CTM-12
INFORMATION ASSURANCE	CTM-12
SECURITY AND ADMINISTRATION	CTM-12
SENSITIVE COMPARTMENTED INFORMATION (SCI) SYSTEMS/NETWORK ADMINISTRATION	CTM-13
CRYPTOLOGIC SYSTEMS INSTALLATION TECHNICIAN	CTM-14
COMMUNICATIONS	CTM-14
CRYPTOLOGIC ELECTRONIC MAINTENANCE	CTM-15
CRYPTOLOGIC MAINTENANCE ADMINISTRATION	CTM-15
CRYPTOLOGIC MAINTENANCE MANAGEMENT	CTM-15
CRYPTOLOGIC SYSTEMS SUPPORT	CTM-16
GENERAL INSTALLATION	CTM-16
INFORMATION ASSURANCE	CTM-17
SECURITY AND ADMINISTRATION	CTM-17
SENSITIVE COMPARTMENTED INFORMATION (SCI) SYSTEMS/NETWORK ADMINISTRATION	CTM-18

TABLE OF CONTENTS (CONT'D)
CRYPTOLOGIC TECHNICIAN (MAINTENANCE) (CTM)

CRYPTOLOGIC SYSTEMS INFRASTRUCTURE TECHNICIAN	CTM-19
COMMUNICATIONS	CTM-19
CRYPTOLOGIC ELECTRONIC MAINTENANCE	CTM-20
CRYPTOLOGIC MAINTENANCE ADMINISTRATION	CTM-20
CRYPTOLOGIC MAINTENANCE MANAGEMENT	CTM-20
CRYPTOLOGIC SYSTEMS SUPPORT	CTM-20
GENERAL INSTALLATION	CTM-20
INFORMATION ASSURANCE	CTM-21
SECURITY AND ADMINISTRATION	CTM-21
SENSITIVE COMPARTMENTED INFORMATION (SCI) SYSTEMS/NETWORK ADMINISTRATION	CTM-22

NAVY ENLISTED OCCUPATIONAL STANDARD

FOR

CRYPTOLOGIC TECHNICIAN (MAINTENANCE) (CTM)



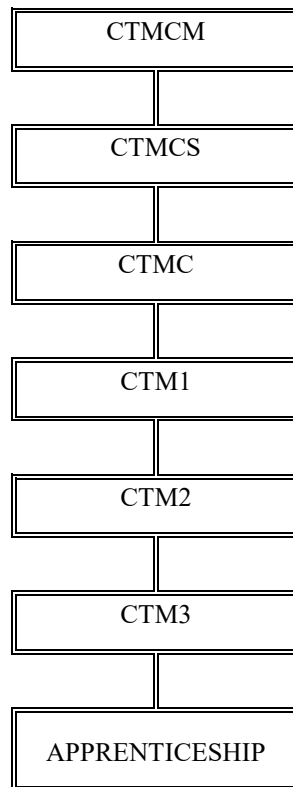
SCOPE OF RATING

Cryptologic Technicians (Maintenance) (CTM) maintain, configure, and install intelligence, tactical cryptologic and ancillary systems used to conduct Information and Cyberspace Operations; design, install, test, certify, troubleshoot, and repair or replace: tactical cryptologic systems, physical security systems, electrical and electronic equipment, antennas, computer systems, networks, and ancillary equipment; implement Information Assurance (IA) policy; manage organizational level maintenance; coordinate repair of command, control, communications, computer, intelligence, surveillance and reconnaissance systems in support of surface, subsurface, air, special warfare, and national consumers.

This Occupational Standard is being incorporated in Volume I, Part B, of the Manual of Navy Enlisted Manpower and Personnel Classifications and Occupational Standards (NAVPERS 18068F) as Chapter 20.

GENERAL INFORMATION

CAREER PATTERN



Normal path of advancement to Chief Warrant Officer and Limited Duty Officer categories can be found in OPNAVINST 1420.1.

For rating entry requirements, refer to MILPERSMAN 1306-618.

SAFETY

The observance of Operational Risk Management (ORM) and proper safety precautions in all areas is an integral part of each billet and the responsibility of every Sailor; therefore, it is a universal requirement for all ratings.

Job Title**Cryptologic Systems Maintenance Technician****Job Code****001035****Job Family**

Installation, Maintenance, and Repair

NOC

TBD

Short Title (30 Characters)

CRYPTO SYSTEM MAINT TECHNICIAN

Short Title (14 Characters)

C SYS MNT TECH

Pay Plan

Enlisted

Career Field

CTM

Other Relationships and Rules

NEC CXXX Series and other NECs as assigned

Job Description

Cryptologic Systems Maintenance Technicians maintain and configure Tactical Cryptologic Systems (TCS) in support of Information and Cyberspace Operations worldwide to Navy, National Security Agency (NSA), and Department of Defense (DoD) for National and theater level missions; perform organizational level maintenance on cryptographic and cryptologic systems, antennas, ancillary equipment, and communication devices; configure, test, and maintain servers and network components; perform operational testing and certification requirements for cryptographic, cryptologic, and Sensitive Compartmented Information Facility (SCIF) physical security equipment supporting Fleet and National operations.

DoD Relationship**Group Title**

Navigation,
Communication, and
Countermeasure, N.E.C.

DoD Code

110200

O*NET Relationship**Occupation Title**

Electrical and Electronics
Repairers, Commercial and
Industrial Equipment

SOC Code

49-2094.00

Job Family

Installation, Maintenance,
and Repair

Skills

Operation and Control
Equipment Maintenance
Systems Analysis
Equipment Selection
Critical Thinking
Installation
Systems Evaluation
Repairing
Reading Comprehension
Operation Monitoring

Abilities

Problem Sensitivity
Information Ordering
Written Comprehension
Deductive Reasoning
Inductive Reasoning
Manual Dexterity
Finger Dexterity
Selective Attention
Extent Flexibility
Oral Expression

COMMUNICATIONS**Paygrade****Task Type****Task Statements**

E4	CORE	Configure communication circuits
E4	NON-CORE	Configure telephone switches
E4	CORE	Inspect communication systems
E4	CORE	Maintain communication signal cables
E4	CORE	Maintain communications infrastructure for data exfiltration
E4	CORE	Repair communication circuits
E4	CORE	Repair communication signal cables
E4	NON-CORE	Repair cryptographic equipment
E4	CORE	Test communication circuits
E4	CORE	Troubleshoot communication circuits
E4	NON-CORE	Troubleshoot cryptographic equipment

CRYPTOLOGIC ELECTRONIC MAINTENANCE

<u>Paygrade</u>	<u>Task Type</u>	<u>Task Statements</u>
E4	CORE	Analyze test equipment results
E4	CORE	Configure Tactical Cryptologic Systems (TCS) hardware
E4	CORE	Detect Electromagnetic Interference (EMI)
E5	CORE	Groom collection systems
E5	CORE	Groom Radio Frequency (RF) path
E4	CORE	Initialize cryptologic equipment
E4	CORE	Inspect antenna weatherization and bonding
E4	CORE	Inspect tactical cryptologic equipment
E4	CORE	Install field changes
E4	CORE	Maintain ancillary Tactical Cryptologic Systems (TCS)
E4	CORE	Maintain antenna systems
E4	CORE	Maintain cryptologic carry-on systems
E4	CORE	Maintain cryptologic computer equipment
E4	CORE	Maintain Information Operation (IO) antenna systems
E4	CORE	Maintain Information Operation (IO) capabilities on Tactical Cryptologic Systems (TCS)
E4	CORE	Maintain tactical cryptologic Radio Frequency (RF) distribution system
E5	CORE	Mitigate Electromagnetic Interference (EMI)
E5	CORE	Repair antenna systems
E4	CORE	Repair cryptologic carry-on systems and peripheral equipment
E4	CORE	Repair Tactical Cryptologic Systems (TCS) and peripheral equipment
E4	CORE	Restore Tactical Cryptologic Systems (TCS)
E4	CORE	Shutdown cryptologic equipment
E4	CORE	Survey Radio Frequency (RF) Spectrum
E4	CORE	Test cryptologic equipment operations
E4	CORE	Test Radio Frequency (RF) distribution system
E4	CORE	Troubleshoot cryptologic carry-on systems and peripheral equipment
E4	CORE	Troubleshoot Tactical Cryptologic Systems (TCS) and peripheral equipment
E4	CORE	Validate test equipment functionality
E4	CORE	Validate test equipment requirements

CRYPTOLOGIC MAINTENANCE ADMINISTRATION

<u>Paygrade</u>	<u>Task Type</u>	<u>Task Statements</u>
E6	CORE	Audit onboard repair parts requirements
E4	CORE	Inventory cryptologic carry-on maintenance assets
E5	CORE	Update station drawings
E6	CORE	Validate maintenance documents

CRYPTOLOGIC MAINTENANCE MANAGEMENT

<u>Paygrade</u>	<u>Task Type</u>	<u>Task Statements</u>
E6	CORE	Coordinate Combat Systems Training Team (CSTT) scenarios
E6	CORE	Develop Combat Systems Training Team (CSTT) scenarios
E6	CORE	Manage logistic support
E6	CORE	Supervise electronic systems maintenance

CRYPTOLOGIC SYSTEMS SUPPORT

<u>Paygrade</u>	<u>Task Type</u>	<u>Task Statements</u>
E5	CORE	Optimize precision geolocation operations
E4	CORE	Perform characterization of the electronic environment
E5	NON-CORE	Perform signals collections

GENERAL INSTALLATION

<u>Paygrade</u>	<u>Task Type</u>	<u>Task Statements</u>
E4	CORE	Analyze schematic diagrams
E4	CORE	Fabricate cabling terminations (e.g., Radio Frequency (RF), network, power, etc.)
E4	CORE	Fabricate electronic systems cables (e.g., fiber, Radio Frequency (RF), etc.)
E6	CORE	Inspect equipment installations
E4	NON-CORE	Install minor scope projects
E4	CORE	Install tactical cryptologic antenna systems
E4	NON-CORE	Remove minor scope projects
E4	CORE	Validate cable standards

INFORMATION ASSURANCE

<u>Paygrade</u>	<u>Task Type</u>	<u>Task Statements</u>
E4	CORE	Implement Information Assurance (IA) security controls
E5	CORE	Implement Information Assurance Vulnerability Alert (IAVA) procedures
E4	CORE	Maintain audit logs
E5	CORE	Perform Data Transfer Agent (DTA)/Authorized Transfer Agent (ATA) functions
E4	CORE	Perform Information Assurance Training (IAT) level 1 system Admin functions
E5	CORE	Perform Information Assurance Training (IAT) level 2 system Admin functions
E6	CORE	Perform System Operation Verification Test (SOVT)

SECURITY AND ADMINISTRATION

<u>Paygrade</u>	<u>Task Type</u>	<u>Task Statements</u>
E4	CORE	Control restricted area access
E4	CORE	Destroy Sensitive Compartmented Information (SCI) materials
E6	CORE	Implement Emergency Action Plans (EAP)
E4	NON-CORE	Install locking mechanisms
E4	CORE	Install physical security equipment
E4	CORE	Perform Emergency Action Plans (EAP)

SECURITY AND ADMINISTRATION (CONT'D)

<u>Paygrade</u>	<u>Task Type</u>	<u>Task Statements</u>
E4	CORE	Protect Crypto Management System (CMS)/Key Management Infrastructure (KMI) materials
E4	CORE	Protect Sensitive Compartmented Information (SCI) material
E4	NON-CORE	Remove locking mechanisms
E4	CORE	Remove physical security equipment
E4	NON-CORE	Repair electronic security systems
E4	NON-CORE	Repair locking mechanisms
E4	CORE	Report Sensitive Compartmented Information Facility (SCIF) accreditation discrepancies
E4	CORE	Store Sensitive Compartmented Information (SCI) material
E4	CORE	Transport Sensitive Compartmented Information (SCI) material
E4	NON-CORE	Troubleshoot electronic security systems
E4	NON-CORE	Troubleshoot locking mechanisms
E6	CORE	Verify Sensitive Compartmented Information Facility (SCIF) accreditation

SENSITIVE COMPARTMENTED INFORMATION (SCI) SYSTEMS/NETWORK ADMINISTRATION

<u>Paygrade</u>	<u>Task Type</u>	<u>Task Statements</u>
E4	CORE	Backup cryptologic systems information
E4	CORE	Configure computer applications
E4	CORE	Configure computer Operating Systems (OS) software
E4	CORE	Configure network hardware
E4	CORE	Configure network software
E5	CORE	Cross-check network performance
E4	CORE	Install certificates (e.g., security, system, etc.)
E4	CORE	Install computer applications
E4	CORE	Install computer Operating Systems (OS) software
E4	CORE	Install network software
E4	CORE	Maintain computer file systems
E4	CORE	Maintain network systems
E4	CORE	Maintain remote computer files
E4	CORE	Maintain system domain accounts
E5	CORE	Modify computer shell scripts
E4	CORE	Perform network systems integration
E4	CORE	Remove computer applications
E4	CORE	Remove computer Operating Systems (OS) software
E4	CORE	Remove network software
E4	CORE	Repair network components
E4	CORE	Restore computer data from backups
E4	CORE	Start computer shell scripts
E4	CORE	Test systems networks

**SENSITIVE COMPARTMENTED INFORMATION (SCI) SYSTEMS/NETWORK ADMINISTRATION
(CONT'D)**

<u>Paygrade</u>	<u>Task Type</u>	<u>Task Statements</u>
E4	CORE	Troubleshoot computer applications
E4	CORE	Troubleshoot computer Operating Systems (OS) software
E4	CORE	Troubleshoot network components

Job Title**Cryptologic Systems Maintenance Director****Job Code****001040****Job Family**

Installation, Maintenance, and Repair

NOC

TBD

Short Title (30 Characters)

CRYPTO SYSTEM MAINT DIRECTOR

Short Title (14 Characters)

C SYS MNT DIR

Pay Plan

Enlisted

Career Field

CTM

Other Relationships and Rules

NEC CXXX Series and other NECs as assigned

Job Description

Cryptologic Systems Maintenance Directors manage and coordinate the installation and maintenance of Tactical Cryptologic Systems (TCS), cryptologic carry-on systems, and cryptologic network systems in support of Information and Cyberspace Operations worldwide for Navy, National Security Agency (NSA), and Department of Defense (DoD) requirements; and support deployment schedules, installation planning, logistics, resource allocation, and fiscal analysis associated with Fleet and National operations.

DoD Relationship**Group Title**

Navigation,
Communication, and
Countermeasure, N.E.C.

DoD Code

110200

O*NET Relationship**Occupation Title**

First-Line Supervisors of
Mechanics, Installers,
and Repairers

SOC Code

49-1011.00

Job Family

Installation, Maintenance,
and Repair

Skills*Management of Material Resources**Quality Control Analysis**Critical Thinking**Reading Comprehension**Systems Evaluation**Coordination**Monitoring**Equipment Selection**Writing**Installation***Abilities***Information Ordering**Written Comprehension**Oral Expression**Problem Sensitivity**Inductive Reasoning**Deductive Reasoning**Selective Attention**Written Expression**Fluency of Ideas**Time Sharing***COMMUNICATIONS****Paygrade**

E4

Task Type

CORE

Task Statements

Inspect communication systems

CRYPTOLOGIC ELECTRONIC MAINTENANCE**Paygrade**

E4

Task Type

CORE

Task Statements

Analyze test equipment results

E5

NON-CORE

Fabricate tactical antenna systems

E4

CORE

Inspect antenna weatherization and bonding

E4

CORE

Inspect tactical cryptologic equipment

CRYPTOLOGIC MAINTENANCE ADMINISTRATION**Paygrade**

E6

Task Type

CORE

Task Statements

Audit onboard repair parts requirements

E6

CORE

Audit station drawings

E7

CORE

Manage Electrostatic Discharge (ESD) programs

E5

CORE

Perform cryptologic carry-on systems training

E7

CORE

Validate Integrated Logistic Support (ILS) documentation

E6

CORE

Validate maintenance documents

CRYPTOLOGIC MAINTENANCE MANAGEMENT

<u>Paygrade</u>	<u>Task Type</u>	<u>Task Statements</u>
E7	CORE	Analyze maintenance trends
E7	CORE	Determine direct support personnel augmentation
E7	CORE	Manage cryptologic carry-on and Tactical Cryptologic Systems (TCS)
E7	CORE	Manage cryptologic carry-on and Tactical Cryptologic Systems (TCS) training
E7	CORE	Manage equipment maintenance
E6	CORE	Manage logistic support
E6	CORE	Supervise electronic systems maintenance
E7	CORE	Validate acceptance testing programs
E7	CORE	Validate equipment maintenance
E6	CORE	Validate minimum equipment requirements

GENERAL INSTALLATION

<u>Paygrade</u>	<u>Task Type</u>	<u>Task Statements</u>
E4	CORE	Analyze schematic diagrams
E7	CORE	Approve installation plans
E5	CORE	Conduct installation site surveys
E6	CORE	Coordinate installation plans
E6	CORE	Coordinate installation site surveys
E6	CORE	Inspect equipment installations
E7	CORE	Perform tactical cryptologic electronic equipment installation Quality Assurance (QA)

INFORMATION ASSURANCE

<u>Paygrade</u>	<u>Task Type</u>	<u>Task Statements</u>
E5	CORE	Maintain Information Assurance (IA) accreditation requirements
E7	NON-CORE	Manage Information Assurance (IA) acceptance requirements
E6	CORE	Perform System Operation Verification Test (SOVT)
E7	CORE	Validate information systems accreditation packages

SECURITY AND ADMINISTRATION

<u>Paygrade</u>	<u>Task Type</u>	<u>Task Statements</u>
E4	CORE	Control restricted area access
E4	CORE	Destroy Sensitive Compartmented Information (SCI) materials
E6	CORE	Implement Emergency Action Plans (EAP)
E4	CORE	Perform Emergency Action Plans (EAP)
E4	CORE	Protect Sensitive Compartmented Information (SCI) material
E4	CORE	Report Sensitive Compartmented Information Facility (SCIF) accreditation discrepancies
E4	CORE	Store Sensitive Compartmented Information (SCI) material
E4	CORE	Transport Sensitive Compartmented Information (SCI) material
E6	CORE	Verify Sensitive Compartmented Information Facility (SCIF) accreditation

SENSITIVE COMPARTMENTED INFORMATION (SCI) SYSTEMS/NETWORK ADMINISTRATION

<u>Paygrade</u>	<u>Task Type</u>	<u>Task Statements</u>
E5	CORE	Cross-check network performance
E4	CORE	Install certificates (e.g., security, system, etc.)
E6	CORE	Manage network systems integration

Job Title**Cryptologic Systems Installation Technician****Job Code****002729****Job Family**

Installation, Maintenance, and Repair

NOC

TBD

Short Title (30 Characters)

CRYPTO SYSTEM INSTAL TECH

Short Title (14 Characters)

C SYS INST TEC

Pay Plan

Enlisted

Career Field

CTM

Other Relationships and Rules

NEC CXXX Series and other NECs as assigned

Job Description

Cryptologic Systems Installation Technicians install, certify, and maintain cryptologic carry-on systems and cryptologic network systems in support of Information and Cyberspace Operations worldwide for Navy, National Security Agency (NSA), and Department of Defense (DoD) requirements; identify, develop, and implement architecture and infrastructure design; ensure network system integrity, and information assurance compliance; perform network configuration, network engineering, Radio Frequency (RF) grooming, antenna maintenance, circuit design and activation; read, develop, and verify schematic drawings; install cable transport, telecommunications, electrical wiring, cables, and termination; conduct site surveys and equipment training, equipment removal/modifications, and logistical support; track equipment movement; perform operational testing and certification requirements for cryptographic, cryptologic, and Sensitive Compartmented Information Facility (SCIF) physical security equipment supporting Fleet and National operations.

DoD Relationship**Group Title**Navigation,
Communication, and
Countermeasure, N.E.C.**DoD Code**

110200

O*NET Relationship**Occupation Title**Electrical and Electronics
Repairers, Commercial and
Industrial Equipment**SOC Code**

49-2094.00

Job FamilyInstallation, Maintenance,
and Repair**Skills**

Operation and Control
Equipment Maintenance
Installation
Critical Thinking
Systems Analysis
Equipment Selection
Systems Evaluation
Coordination
Reading Comprehension
Operation Monitoring

Abilities

Information Ordering
Written Comprehension
Problem Sensitivity
Deductive Reasoning
Manual Dexterity
Inductive Reasoning
Extent Flexibility
Selective Attention
Finger Dexterity
Dynamic Flexibility

COMMUNICATIONS**Paygrade****Task Type****Task Statements**

E4	CORE	Configure communication circuits
E4	NON-CORE	Configure telephone switches
E5	CORE	Establish communications infrastructure for data exfiltration
E4	CORE	Inspect communication systems
E4	CORE	Maintain communication signal cables
E4	CORE	Maintain communications infrastructure for data exfiltration
E4	CORE	Repair communication circuits
E4	CORE	Repair communication signal cables
E4	CORE	Test communication circuits
E4	CORE	Troubleshoot communication circuits
E4	NON-CORE	Troubleshoot cryptographic equipment

CRYPTOLOGIC ELECTRONIC MAINTENANCE

<u>Paygrade</u>	<u>Task Type</u>	<u>Task Statements</u>
E4	CORE	Analyze test equipment results
E5	NON-CORE	Assemble collection equipment (Commercial Off The Shelf/Government Off The Shelf (COTS/GOTS))
E4	CORE	Detect Electromagnetic Interference (EMI)
E5	NON-CORE	Fabricate tactical antenna systems
E5	CORE	Groom collection systems
E5	CORE	Groom Radio Frequency (RF) path
E4	CORE	Initialize cryptologic equipment
E4	CORE	Inspect antenna weatherization and bonding
E4	CORE	Inspect tactical cryptologic equipment
E4	CORE	Install field changes
E4	CORE	Maintain cryptologic carry-on systems
E4	CORE	Maintain cryptologic computer equipment
E5	CORE	Mitigate Electromagnetic Interference (EMI)
E5	CORE	Repair antenna systems
E4	CORE	Repair cryptologic carry-on systems and peripheral equipment
E4	CORE	Shutdown cryptologic equipment
E4	CORE	Survey Radio Frequency (RF) Spectrum
E4	CORE	Test cryptologic equipment operations
E4	CORE	Test Radio Frequency (RF) distribution system
E4	CORE	Troubleshoot cryptologic carry-on systems and peripheral equipment
E4	CORE	Validate test equipment functionality
E4	CORE	Validate test equipment requirements

CRYPTOLOGIC MAINTENANCE ADMINISTRATION

<u>Paygrade</u>	<u>Task Type</u>	<u>Task Statements</u>
E6	CORE	Audit onboard repair parts requirements
E4	CORE	Inventory cryptologic carry-on maintenance assets
E5	CORE	Perform cryptologic carry-on systems training
E5	CORE	Update station drawings
E6	CORE	Validate maintenance documents

CRYPTOLOGIC MAINTENANCE MANAGEMENT

<u>Paygrade</u>	<u>Task Type</u>	<u>Task Statements</u>
E6	CORE	Manage logistic support
E6	CORE	Supervise electronic systems maintenance

CRYPTOLOGIC SYSTEMS SUPPORT

<u>Paygrade</u>	<u>Task Type</u>	<u>Task Statements</u>
E5	CORE	Optimize precision geolocation operations
E4	CORE	Perform characterization of the electronic environment
E5	NON-CORE	Perform electronic counter-surveillance
E5	NON-CORE	Perform precision geolocation operations
E5	NON-CORE	Perform Sensitive Site Exploitation (SSE) operations
E5	NON-CORE	Perform signals collections
E5	NON-CORE	Perform signals survey operations
E5	NON-CORE	Perform tactical Airborne Precision Geolocation (APGL) operations/Unmanned Aerial Systems (UAS) payload operations

GENERAL INSTALLATION

<u>Paygrade</u>	<u>Task Type</u>	<u>Task Statements</u>
E4	CORE	Analyze schematic diagrams
E5	CORE	Conduct installation site surveys
E6	CORE	Coordinate installation plans
E6	CORE	Coordinate installation site surveys
E4	CORE	Fabricate cabling terminations (e.g., Radio Frequency (RF), network, power, etc.)
E4	CORE	Fabricate electronic systems cables (e.g., fiber, Radio Frequency (RF), etc.)
E6	CORE	Inspect equipment installations
E4	NON-CORE	Install cable ducts
E4	CORE	Install communication equipment
E4	CORE	Install communication signal cables
E4	CORE	Install cryptologic carry-on equipment
E4	NON-CORE	Install electrical conduits
E4	CORE	Install electronic equipment
E4	CORE	Install electronic equipment racks
E4	NON-CORE	Install minor scope projects
E4	CORE	Install network equipment
E5	CORE	Install power panels
E4	CORE	Install tactical cryptologic antenna systems
E4	NON-CORE	Operate specialized installation tools
E4	NON-CORE	Remove cable ducts
E4	CORE	Remove communication equipment
E4	CORE	Remove communication signal cables
E4	CORE	Remove cryptologic carry-on equipment
E4	NON-CORE	Remove electrical conduits
E4	CORE	Remove electronic equipment
E4	CORE	Remove electronic equipment racks
E4	NON-CORE	Remove minor scope projects

GENERAL INSTALLATION (CONT'D)

<u>Paygrade</u>	<u>Task Type</u>	<u>Task Statements</u>
E4	CORE	Remove network equipment
E5	CORE	Remove power panels
E4	CORE	Validate cable standards

INFORMATION ASSURANCE

<u>Paygrade</u>	<u>Task Type</u>	<u>Task Statements</u>
E4	CORE	Implement Information Assurance (IA) security controls
E5	CORE	Implement Information Assurance Vulnerability Alert (IAVA) procedures
E4	CORE	Maintain audit logs
E5	CORE	Maintain Information Assurance (IA) accreditation requirements
E5	CORE	Perform Data Transfer Agent (DTA)/Authorized Transfer Agent (ATA) functions
E4	CORE	Perform Information Assurance Training (IAT) level 1 system Admin functions
E5	CORE	Perform Information Assurance Training (IAT) level 2 system Admin functions
E6	CORE	Perform System Operation Verification Test (SOVT)

SECURITY AND ADMINISTRATION

<u>Paygrade</u>	<u>Task Type</u>	<u>Task Statements</u>
E4	CORE	Control restricted area access
E4	CORE	Destroy Sensitive Compartmented Information (SCI) materials
E6	CORE	Implement Emergency Action Plans (EAP)
E4	NON-CORE	Install intrusion detection systems
E4	NON-CORE	Install locking mechanisms
E4	CORE	Install physical security equipment
E4	CORE	Perform Emergency Action Plans (EAP)
E4	CORE	Protect Crypto Management System (CMS)/Key Management Infrastructure (KMI) materials
E4	CORE	Protect Sensitive Compartmented Information (SCI) material
E4	NON-CORE	Remove locking mechanisms
E4	CORE	Remove physical security equipment
E4	NON-CORE	Repair electronic security systems
E4	NON-CORE	Repair locking mechanisms
E4	CORE	Report Sensitive Compartmented Information Facility (SCIF) accreditation discrepancies
E4	CORE	Store Sensitive Compartmented Information (SCI) material
E4	CORE	Transport Sensitive Compartmented Information (SCI) material
E4	NON-CORE	Troubleshoot electronic security systems
E4	NON-CORE	Troubleshoot locking mechanisms
E6	CORE	Verify Sensitive Compartmented Information Facility (SCIF) accreditation

SENSITIVE COMPARTMENTED INFORMATION (SCI) SYSTEMS/NETWORK ADMINISTRATION

<u>Paygrade</u>	<u>Task Type</u>	<u>Task Statements</u>
E4	CORE	Backup cryptologic systems information
E4	CORE	Configure computer applications
E4	CORE	Configure computer Operating Systems (OS) software
E4	CORE	Configure network hardware
E4	CORE	Configure network software
E5	NON-CORE	Create computer shell scripts
E5	CORE	Cross-check network performance
E4	CORE	Install certificates (e.g., security, system, etc.)
E4	CORE	Install computer applications
E4	CORE	Install computer Operating Systems (OS) software
E4	CORE	Install network software
E4	CORE	Maintain computer file systems
E4	CORE	Maintain network systems
E4	CORE	Maintain remote computer files
E4	CORE	Maintain system domain accounts
E5	CORE	Modify computer shell scripts
E4	CORE	Perform network systems integration
E6	CORE	Plan network systems integration
E4	CORE	Remove computer applications
E4	CORE	Remove computer Operating Systems (OS) software
E4	CORE	Remove network software
E4	CORE	Repair network components
E4	CORE	Restore computer data from backups
E4	CORE	Start computer shell scripts
E4	CORE	Test systems networks
E4	CORE	Troubleshoot computer applications
E4	CORE	Troubleshoot computer Operating Systems (OS) software
E4	CORE	Troubleshoot network components

Job Title**Cryptologic Systems Infrastructure Technician****Job Code****002811****Job Family**

Computer and Mathematical

NOC

TBD

Short Title (30 Characters)

CRYPTO SYSTEM INFRA TECH

Short Title (14 Characters)

C SYS INFR TEC

Pay Plan

Enlisted

Career Field

CTM

Other Relationships and Rules

NEC CXXX Series and other NECs as assigned

Job Description

Cryptologic Systems Infrastructure Technicians install, certify, and maintain cryptologic network systems in support of Information and Cyberspace Operations worldwide for Navy, National Security Agency (NSA), Defense Intelligence Agency (DIA), and Department of Defense (DoD) requirements; identify, develop, and implement architecture and infrastructure design; ensure network system integrity, and information assurance compliance; perform network configuration, network engineering, circuit design and activation; read, develop, and verify schematic drawings; install cable transport, telecommunications, electrical wiring, cables, and termination; conduct site surveys and equipment training, equipment removal/modifications, and logistical support; track equipment movement; perform operational testing and certification requirements for cryptographic, cryptologic, and Sensitive Compartmented Information Facility (SCIF) physical security equipment supporting Fleet and National operations.

DoD Relationship**Group Title**

Navigation,
Communication, and
Countermeasure, N.E.C.

DoD Code

110200

O*NET Relationship**Occupation Title**

Network and Computer
Systems Administrators

SOC Code

15-1244.00

Job Family

Computer and Mathematical

Skills*Operation and Control**Equipment Maintenance**Installation**Systems Analysis**Equipment Selection**Critical Thinking**Reading Comprehension**Coordination**Complex Problem Solving**Management of Material Resources***Abilities***Written Comprehension**Information Ordering**Deductive Reasoning**Manual Dexterity**Problem Sensitivity**Inductive Reasoning**Finger Dexterity**Selective Attention**Extent Flexibility**Oral Expression***COMMUNICATIONS****Paygrade****Task Type****Task Statements**

E4

CORE

Configure communication circuits

E4

NON-CORE

Configure telephone switches

E5

CORE

Establish communications infrastructure for data exfiltration

E4

CORE

Inspect communication systems

E4

CORE

Maintain communication signal cables

E4

CORE

Maintain communications infrastructure for data exfiltration

E4

CORE

Repair communication circuits

E4

CORE

Repair communication signal cables

E4

NON-CORE

Repair cryptographic equipment

E4

CORE

Test communication circuits

E4

CORE

Troubleshoot communication circuits

E4

NON-CORE

Troubleshoot cryptographic equipment

CRYPTOLOGIC ELECTRONIC MAINTENANCE

<u>Paygrade</u>	<u>Task Type</u>	<u>Task Statements</u>
E4	CORE	Analyze test equipment results
E4	CORE	Detect Electromagnetic Interference (EMI)
E4	CORE	Initialize cryptologic equipment
E4	CORE	Install field changes
E4	CORE	Maintain antenna systems
E4	CORE	Maintain cryptologic computer equipment
E5	CORE	Mitigate Electromagnetic Interference (EMI)
E4	CORE	Shutdown cryptologic equipment
E4	CORE	Validate test equipment functionality
E4	CORE	Validate test equipment requirements

CRYPTOLOGIC MAINTENANCE ADMINISTRATION

<u>Paygrade</u>	<u>Task Type</u>	<u>Task Statements</u>
E5	CORE	Update station drawings
E6	CORE	Validate maintenance documents

CRYPTOLOGIC MAINTENANCE MANAGEMENT

<u>Paygrade</u>	<u>Task Type</u>	<u>Task Statements</u>
E6	CORE	Manage logistic support
E6	CORE	Supervise electronic systems maintenance

CRYPTOLOGIC SYSTEMS SUPPORT

<u>Paygrade</u>	<u>Task Type</u>	<u>Task Statements</u>
E4	NON-CORE	Process customer trouble calls

GENERAL INSTALLATION

<u>Paygrade</u>	<u>Task Type</u>	<u>Task Statements</u>
E4	CORE	Analyze schematic diagrams
E5	CORE	Conduct installation site surveys
E6	CORE	Coordinate installation plans
E6	CORE	Coordinate installation site surveys
E4	CORE	Fabricate cabling terminations (e.g., Radio Frequency (RF), network, power, etc.)
E4	CORE	Fabricate electronic systems cables (e.g., fiber, Radio Frequency (RF), etc.)
E6	CORE	Inspect equipment installations
E4	NON-CORE	Install cable ducts
E4	CORE	Install communication equipment
E4	CORE	Install communication signal cables
E4	NON-CORE	Install electrical conduits
E4	CORE	Install electronic equipment
E4	CORE	Install electronic equipment racks
E4	CORE	Install network equipment
E4	NON-CORE	Operate specialized installation tools

GENERAL INSTALLATION (CONT'D)

<u>Paygrade</u>	<u>Task Type</u>	<u>Task Statements</u>
E4	NON-CORE	Remove cable ducts
E4	CORE	Remove communication equipment
E4	CORE	Remove communication signal cables
E4	NON-CORE	Remove electrical conduits
E4	CORE	Remove electronic equipment
E4	CORE	Remove electronic equipment racks
E4	CORE	Remove network equipment
E4	CORE	Validate cable standards

INFORMATION ASSURANCE

<u>Paygrade</u>	<u>Task Type</u>	<u>Task Statements</u>
E4	NON-CORE	Identify Information Systems Security (ISS) violations and vulnerabilities
E4	CORE	Implement Information Assurance (IA) security controls
E5	CORE	Implement Information Assurance Vulnerability Alert (IAVA) procedures
E4	CORE	Maintain audit logs
E5	CORE	Maintain Information Assurance (IA) accreditation requirements
E5	CORE	Perform Data Transfer Agent (DTA)/Authorized Transfer Agent (ATA) functions
E4	CORE	Perform Information Assurance Training (IAT) level 1 system Admin functions
E5	CORE	Perform Information Assurance Training (IAT) level 2 system Admin functions
E6	CORE	Perform System Operation Verification Test (SOVT)
E4	NON-CORE	Provide technical support to resolve cyber incidents
E4	NON-CORE	Remove system viruses
E7	NON-CORE	Report Information Systems Security (ISS) incidents
E5	NON-CORE	Update computer Information Systems (IS) antivirus definitions

SECURITY AND ADMINISTRATION

<u>Paygrade</u>	<u>Task Type</u>	<u>Task Statements</u>
E4	CORE	Control restricted area access
E4	CORE	Destroy Sensitive Compartmented Information (SCI) materials
E6	CORE	Implement Emergency Action Plans (EAP)
E4	NON-CORE	Install intrusion detection systems
E4	NON-CORE	Install locking mechanisms
E4	CORE	Install physical security equipment
E4	CORE	Perform Emergency Action Plans (EAP)
E4	CORE	Protect Crypto Management System (CMS)/Key Management Infrastructure (KMI) materials
E4	CORE	Protect Sensitive Compartmented Information (SCI) material
E4	NON-CORE	Remove locking mechanisms
E4	CORE	Remove physical security equipment
E4	NON-CORE	Repair electronic security systems
E4	NON-CORE	Repair locking mechanisms

SECURITY AND ADMINISTRATION (CONT'D)

<u>Paygrade</u>	<u>Task Type</u>	<u>Task Statements</u>
E4	CORE	Report Sensitive Compartmented Information Facility (SCIF) accreditation discrepancies
E4	CORE	Store Sensitive Compartmented Information (SCI) material
E4	CORE	Transport Sensitive Compartmented Information (SCI) material
E4	NON-CORE	Troubleshoot electronic security systems
E4	NON-CORE	Troubleshoot locking mechanisms
E6	CORE	Verify Sensitive Compartmented Information Facility (SCIF) accreditation

SENSITIVE COMPARTMENTED INFORMATION (SCI) SYSTEMS/NETWORK ADMINISTRATION

<u>Paygrade</u>	<u>Task Type</u>	<u>Task Statements</u>
E4	CORE	Backup cryptologic systems information
E4	CORE	Configure computer applications
E4	CORE	Configure computer Operating Systems (OS) software
E4	CORE	Configure network hardware
E4	CORE	Configure network software
E5	NON-CORE	Create computer shell scripts
E7	NON-CORE	Create Continuity of Operations (COOP) Procedures
E5	NON-CORE	Create web pages
E5	CORE	Cross-check network performance
E6	NON-CORE	Establish Command, Control, Communications, Computers, Combat Systems and Intelligence (C5I) system interconnectivity
E4	CORE	Install certificates (e.g., security, system, etc.)
E4	CORE	Install computer applications
E4	CORE	Install computer Operating Systems (OS) software
E4	CORE	Install network software
E4	CORE	Maintain computer file systems
E4	CORE	Maintain network systems
E4	CORE	Maintain remote computer files
E4	CORE	Maintain system domain accounts
E5	NON-CORE	Maintain websites
E5	CORE	Modify computer shell scripts
E7	NON-CORE	Perform Information Assurance Management (IAM) functions
E4	CORE	Perform network systems integration
E6	CORE	Plan network systems integration
E4	CORE	Remove computer applications
E4	CORE	Remove computer Operating Systems (OS) software
E4	CORE	Remove network software
E4	CORE	Repair network components
E4	CORE	Restore computer data from backups
E4	CORE	Start computer shell scripts

**SENSITIVE COMPARTMENTED INFORMATION (SCI) SYSTEMS/NETWORK ADMINISTRATION
(CONT'D)**

<u>Paygrade</u>	<u>Task Type</u>	<u>Task Statements</u>
E4	CORE	Test systems networks
E4	CORE	Troubleshoot computer applications
E4	CORE	Troubleshoot computer Operating Systems (OS) software
E4	CORE	Troubleshoot network components
E6	NON-CORE	Validate migration/installation computer software