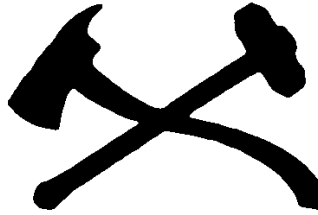


# CHAPTER 21



## DAMAGE CONTROLMAN (DC)

NAVPERS 18068F-21F  
Change 102

Updated: April 2025

**TABLE OF CONTENTS**  
**DAMAGE CONTROLMAN (DC)**

|  |              |
|--|--------------|
| <b>SCOPE OF RATING</b>   | <b>DC-3</b>  |
| <b>GENERAL INFORMATION</b>   | <b>DC-4</b>  |
| <b>SHIP SURVIVABILITY SYSTEMS MAINTAINER</b>                                 | <b>DC-5</b>  |
| CHEMICAL, BIOLOGICAL, RADIOLOGICAL, AND NUCLEAR EXPLOSIVE (CBRNE)<br>DEFENSE | DC-5         |
| DAMAGE CONTROL   | DC-6         |
| EQUIPMENT MAINTENANCE  | DC-7         |
| SHIPBOARD DAMAGE CONTROL TRAINING  | DC-9         |
| TECHNICAL ADMINISTRATION   | DC-10        |
| <b>SHIP SURVIVABILITY SYSTEMS TECHNICIAN</b>                                 | <b>DC-11</b> |
| CHEMICAL, BIOLOGICAL, RADIOLOGICAL, AND NUCLEAR EXPLOSIVE (CBRNE)<br>DEFENSE | DC-11        |
| DAMAGE CONTROL   | DC-11        |
| SHIPBOARD DAMAGE CONTROL TRAINING  | DC-11        |
| TECHNICAL ADMINISTRATION   | DC-12        |

NAVY ENLISTED OCCUPATIONAL STANDARD

FOR

DAMAGE CONTROLMAN (DC)



SCOPE OF RATING

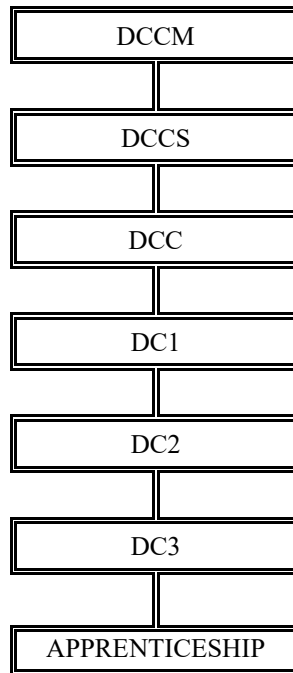
Damage Controlmen (DC) perform organizational and intermediate level maintenance and repair damage control equipment and systems; plan, supervise, and perform tasks necessary for damage control, ship stability, preservation of watertight integrity, firefighting, and Chemical, Biological, Radiological, and Nuclear Explosive (CBRNE) defense; instruct and coordinate damage control parties; instruct personnel in the techniques of damage control and CBRNE defense; and prepare records and reports.

---

This Occupational Standard is to be incorporated in Volume I, Part B, of the Manual of Navy Enlisted Manpower and Personnel Classifications and Occupational Standards (NAVPERS 18068E) as Chapter 21.

## GENERAL INFORMATION

### CAREER PATTERN



Normal path of advancement to Chief Warrant Officer and Limited Duty Officer categories can be found in OPNAVINST 1420.1.

For rating entry requirements, refer to MILPERSMAN 1306-618.

### SAFETY

**The observance of Operational Risk Management (ORM) and proper safety precautions in all areas is an integral part of each billet and the responsibility of every Sailor; therefore, it is a universal requirement for all ratings.**

**Job Title****Ship Survivability Systems Maintainer****Job Code****003002****Job Family**

Protective Service

**NOC**

TBD

**Short Title (30 Characters)**

SHIP SURVIVAL SYS MAINTAINER

**Short Title (14 Characters)**

SHIP SURV MNT

**Pay Plan**

Enlisted

**Career Field**

DC

**Other Relationships and Rules**

NEC 7XXX and UXXX series and other NECs as assigned

**Job Description**

Ship Survivability Systems Maintainers do the work necessary for damage control, ship stability, firefighting, fire prevention, and Chemical, Biological, Radiological, and Nuclear Explosive (CBRNE) defense; instruct personnel in the methods of damage control and CBRNE defense and repair damage control equipment and systems; operate, repair, and maintain installed firefighting systems and equipment, damage control equipment, and CBRNE defense equipment; train shipboard personnel in the operation, maintenance, and repair of damage control systems and equipment, life saving devices, and various firefighting methods; perform emergency repairs to decks, structures, pipes, and hulls by using emergency patching, plugging, and shoring; maintain and repair watertight closures and assorted fittings; and act as the duty Fire Marshal and firefighting leaders and train ship's company in chemical, biological and radiological defense. Maintainers work under the supervision of a mentor while learning a trade or skill.

**DoD Relationship****Group Title**Other Craftworkers N.E.C.,  
General**DoD Code**

179000

**O\*NET Relationship****Occupation Title**First-Line Supervisors of  
Firefighting and Prevention  
Workers**SOC Code**

33-1021.00

**Job Family**

Protective Service

**Skills***Equipment Maintenance**Systems Evaluation**Complex Problem Solving**Critical Thinking**Judgment and Decision Making**Repairing**Operation Monitoring**Operation and Control**Monitoring**Equipment Selection***Abilities***Written Comprehension**Problem Sensitivity**Manual Dexterity**Inductive Reasoning**Information Ordering**Perceptual Speed**Deductive Reasoning**Reaction Time**Selective Attention**Multi-limb Coordination***CHEMICAL, BIOLOGICAL, RADIOLOGICAL, AND NUCLEAR EXPLOSIVE (CBRNE) DEFENSE****Paygrade**

E5

**Task Type**

CORE

**Task Statements**

Activate chemical detection systems (i.e., Improve Point Detection System Lifecycle-Replacement (IPDS-LR))

E4

CORE

Collect biological samples

E5

CORE

Conduct preventive maintenance on chemical detection systems (i.e., Improve Point Detection System Lifecycle-Replacement (IPDS-LR))

E5

CORE

Conduct preventive maintenance on Joint Biological Point Detection System (JBPDS)

E4

CORE

Conduct shipboard decontamination

E4

CORE

Detect Alpha, Beta, Gamma radiation

E4

CORE

Detect chemical agents

E5

CORE

Establish Contamination Control Areas (CCA)

E5

CORE

Establish Decontamination (DECON) stations

E4

CORE

Inspect chemical protective equipment

E4

CORE

Inventory consumable chemical and biological items (e.g., Biological Response Kit (BRK), Hand Held Assembly (HHA), Decontamination Station Equipment (DSE), etc.)

**CHEMICAL, BIOLOGICAL, RADIOLOGICAL, AND NUCLEAR EXPLOSIVE (CBRNE) DEFENSE (CONT'D)**

| <b><u>Paygrade</u></b> | <b><u>Task Type</u></b> | <b><u>Task Statements</u></b>  |
|------------------------|-------------------------|--|
| E4                     | CORE                    | Issue chemical protection equipment  |
| E4                     | CORE                    | Monitor installed chemical and biological systems for air contamination  |
| E4                     | CORE                    | Perform preventive maintenance on gas masks  |
| E4                     | CORE                    | Perform preventive maintenance on radiological detection equipment   |
| E4                     | CORE                    | Repair Decontamination (DECON) showers   |
| E4                     | CORE                    | Replace Joint Biological Point Detection System (JBPDS) system components                                      |
| E4                     | CORE                    | Set Mission Oriented Protective Posture (MOPP) levels  |
| E5                     | CORE                    | Supervise Mission Oriented Protective Posture (MOPP) settings  |
| E4                     | CORE                    | Test Decontamination (DECON) showers   |
| E5                     | CORE                    | Troubleshoot chemical detection systems (i.e., Improve Point Detection System Lifecycle-Replacement (IPDS-LR)) |
| E5                     | CORE                    | Troubleshoot Joint Biological Point Detection System (JBPDS)   |

**DAMAGE CONTROL**

| <b><u>Paygrade</u></b> | <b><u>Task Type</u></b> | <b><u>Task Statements</u></b>  |
|------------------------|-------------------------|--|
| E4                     | CORE                    | Activate Counter Measure Wash Down (CMWD) zones  |
| E4                     | CORE                    | Activate ventilation systems remotely or locally   |
| E4                     | CORE                    | Actuate fire protection systems remotely or locally (e.g., Halon, Heptafluoropropane, Aqueous Film Forming Foam (AFFF), water mist, etc.)        |
| E4                     | CORE                    | Actuate fire pumps remotely or locally   |
| E4                     | CORE                    | Actuate fire main valves remotely or locally   |
| E4                     | CORE                    | Charge Self-Contained Breathing Apparatus (SCBA) bottles using Breathing Air Charging Stations (BACS)/Emergency Breathing Air Compressors (EBAC) |
| E5                     | CORE                    | Coordinate casualty scene response (e.g., fire, flooding, toxic gas, etc.)   |
| E5                     | NON-CORE                | Coordinate casualty scene response for aviation firefighting   |
| E4                     | CORE                    | Dewater spaces using eductors  |
| E4                     | CORE                    | Dewater spaces using portable pumps  |
| E4                     | CORE                    | Enforce fire prevention and fire safety standards  |
| E4                     | CORE                    | Inspect Damage Control (DC) communication systems  |
| E4                     | CORE                    | Inspect tanks and voids for battle damage  |
| E4                     | CORE                    | Install emergency pipe patches   |
| E4                     | CORE                    | Install hull patches   |
| E4                     | CORE                    | Install shoring  |
| E5                     | CORE                    | Maintain Collective Protective System (CPS) pressure zones   |
| E4                     | CORE                    | Monitor Supplied-Air Respirator/Self-Contained Breathing Apparatus (SAR/SCBA) pressure gauges  |
| E4                     | CORE                    | Perform emergency access actions   |
| E4                     | CORE                    | Perform list control operations  |
| E4                     | CORE                    | Supervise casualty response teams (e.g., fire, flooding, toxic gas, etc.)  |

### **DAMAGE CONTROL (CONT'D)**

| <b><u>Paygrade</u></b> | <b><u>Task Type</u></b> | <b><u>Task Statements</u></b>                           |
|------------------------|-------------------------|---|
| E4                     | CORE                    | Take soundings (e.g., compartments, tanks, voids, etc.) |
| E5                     | CORE                    | Test atmosphere for hazardous materials                 |

### **EQUIPMENT MAINTENANCE**

| <b><u>Paygrade</u></b> | <b><u>Task Type</u></b> | <b><u>Task Statements</u></b>  |
|------------------------|-------------------------|--|
| E4                     | CORE                    | Activate Collective Protective System (CPS) zones  |
| E5                     | CORE                    | Conduct air quality tests  |
| E4                     | CORE                    | Conduct preventive maintenance on Breathing Air Charging Stations (BACS)/<br>Emergency Breathing Air Compressors (EBAC)  |
| E4                     | CORE                    | Inventory Damage Control Repair Station (DCRS) equipment   |
| E4                     | CORE                    | Perform preventive maintenance on fall protection equipment (e.g., Ladder<br>Safety System (LSS), Firefighting Extraction System (FES), Rescue Davit<br>System (RDS), etc.)  |
| E4                     | CORE                    | Perform preventive maintenance on Aqueous Film Forming Foam (AFFF)<br>systems  |
| E4                     | CORE                    | Perform preventive maintenance on balance joiner doors   |
| E4                     | CORE                    | Perform preventive maintenance on ballast control systems  |
| E4                     | CORE                    | Perform preventive maintenance on Collective Protective Systems (CPS)  |
| E4                     | CORE                    | Perform preventive maintenance on Damage Control (DC) firefighting helmets   |
| E4                     | CORE                    | Perform preventive maintenance on Damage Control Repair Station (DCRS)<br>equipment  |
| E4                     | CORE                    | Perform preventive maintenance on electrical submersible pumps   |
| E4                     | CORE                    | Perform preventive maintenance on emergency access equipment (i.e., Portable<br>Exothermic Cutting Units (PECU) and Portable Electric Access and Rescue<br>System (PEARS))   |
| E4                     | CORE                    | Perform preventive maintenance on fire main systems  |
| E4                     | CORE                    | Perform preventive maintenance on freshwater firefighting systems  |
| E5                     | CORE                    | Perform preventive maintenance on gas-free engineering test equipment  |
| E4                     | CORE                    | Perform preventive maintenance on halon/Heptafluoropropane systems   |
| E4                     | CORE                    | Perform preventive maintenance on hydraulic valve control stations (e.g.,<br>Floodable Void Hydraulic Control (FVHC) stations, Hydraulic Valve Control<br>Systems (HVCS), Miscellaneous Valve Hydraulic Control Station (MVHC),<br>etc.) |
| E5                     | CORE                    | Perform preventive maintenance on installed Carbon Dioxide (CO2) systems   |
| E4                     | CORE                    | Perform preventive maintenance on installed eductor systems  |
| E4                     | CORE                    | Perform preventive maintenance on list control systems   |
| E4                     | CORE                    | Perform preventive maintenance on portable desmoking equipment   |
| E4                     | CORE                    | Perform preventive maintenance on portable eductors  |
| E4                     | CORE                    | Perform preventive maintenance on portable emergency pump (i.e., P-100)  |
| E4                     | CORE                    | Perform preventive maintenance on portable smoke generators  |
| E4                     | CORE                    | Perform preventive maintenance on Self-Contained Breathing Apparatus<br>(SCBA)   |
| E4                     | CORE                    | Perform preventive maintenance on sprinkler systems  |

### **EQUIPMENT MAINTENANCE (CONT'D)**

| <b><u>Paygrade</u></b> | <b><u>Task Type</u></b> | <b><u>Task Statements</u></b>  |
|------------------------|-------------------------|--|
| E4                     | CORE                    | Perform preventive maintenance on Supplied-Air Respirator/Self-Contained Breathing Apparatus (SAR/SCBA)  |
| E4                     | CORE                    | Perform preventive maintenance on Thermal Imaging Cameras (TIC)  |
| E4                     | CORE                    | Perform preventive maintenance on water mist systems   |
| E4                     | CORE                    | Perform preventive maintenance on water wash down systems  |
| E5                     | CORE                    | Repair Aqueous Film Forming Foam (AFFF) systems  |
| E4                     | CORE                    | Repair balance joiner door components  |
| E5                     | CORE                    | Repair ballast control systems   |
| E5                     | CORE                    | Repair Breathing Air Charging Stations (BACS)/Emergency Breathing Air Compressors (EBAC)   |
| E5                     | CORE                    | Repair Collective Protective Systems (CPS)   |
| E4                     | CORE                    | Repair emergency access equipment (i.e., Portable Exothermic Cutting Units (PECU), Portable Electric Access and Rescue System (PEARS))   |
| E4                     | CORE                    | Repair fire main systems   |
| E4                     | CORE                    | Repair freshwater firefighting systems   |
| E5                     | CORE                    | Repair gas-free engineering test equipment   |
| E4                     | CORE                    | Repair halon/Heptafluoropropane systems  |
| E4                     | CORE                    | Repair hydraulic valve control stations (e.g., Floodable Void Hydraulic Control (FVHC) stations, Hydraulic Valve Control Systems (HVCS), Miscellaneous Valve Hydraulic Control Station (MVHC), etc.) |
| E5                     | CORE                    | Repair installed Carbon Dioxide (CO2) systems  |
| E4                     | CORE                    | Repair installed eductor systems   |
| E5                     | CORE                    | Repair list control systems  |
| E4                     | CORE                    | Repair portable emergency pump (i.e., P-100)   |
| E4                     | CORE                    | Repair portable smoke generators   |
| E4                     | CORE                    | Repair sprinkler systems   |
| E5                     | CORE                    | Repair water mist systems  |
| E4                     | CORE                    | Repair water wash down systems   |
| E5                     | CORE                    | Review Damage Control Repair Station Allowance Equipage List (AEL)   |
| E5                     | NON-CORE                | Supervise preventive maintenance on air/water tight closures (e.g., ballistic doors, hatches, scuttles, etc.)  |
| E5                     | NON-CORE                | Supervise preventive maintenance on battle lanterns  |
| E5                     | NON-CORE                | Supervise preventive maintenance on Emergency Escape Breathing Devices (EEBD)  |
| E5                     | NON-CORE                | Supervise preventive maintenance on fire stations  |
| E5                     | NON-CORE                | Supervise preventive maintenance on ladder components  |
| E5                     | NON-CORE                | Supervise preventive maintenance on overboard discharge connections  |
| E5                     | NON-CORE                | Supervise preventive maintenance on portable Aqueous Film Forming Foam (AFFF) extinguishers  |
| E5                     | NON-CORE                | Supervise preventive maintenance on portable Carbon Dioxide (CO2) fire extinguishers   |



### **EQUIPMENT MAINTENANCE (CONT'D)**

| <b><u>Paygrade</u></b> | <b><u>Task Type</u></b> | <b><u>Task Statements</u></b>  |
|------------------------|-------------------------|--|
| E5                     | NON-CORE                | Supervise preventive maintenance on Potassium Bicarbonate (PKP) bottles  |
| E5                     | NON-CORE                | Supervise repairs of air/water tight closures (e.g., ballistic doors, hatches, scuttles, etc.)   |
| E5                     | NON-CORE                | Supervise repairs of battle lanterns   |
| E5                     | NON-CORE                | Supervise repairs of fire stations   |
| E5                     | NON-CORE                | Supervise repairs of overboard discharge connections   |
| E5                     | NON-CORE                | Supervise repairs on ladder components   |
| E5                     | NON-CORE                | Supervise troubleshooting of air/water tight closures (e.g., ballistic doors, hatches, scuttles, etc.)   |
| E5                     | NON-CORE                | Supervise troubleshooting of battle lanterns   |
| E5                     | CORE                    | Troubleshoot Aqueous Film Forming Foam (AFFF) systems  |
| E4                     | CORE                    | Troubleshoot balance joiner doors  |
| E5                     | CORE                    | Troubleshoot ballast control systems   |
| E4                     | CORE                    | Troubleshoot Breathing Air Charging Stations (BACS)/Emergency Breathing Air Compressors (EBAC)   |
| E5                     | CORE                    | Troubleshoot Collective Protective Systems (CPS)   |
| E4                     | CORE                    | Troubleshoot emergency access equipment (i.e., Portable Exothermic Cutting Units (PECU), Portable Electric Access and Rescue System (PEARS))   |
| E4                     | CORE                    | Troubleshoot fire main systems   |
| E4                     | CORE                    | Troubleshoot freshwater firefighting systems   |
| E5                     | CORE                    | Troubleshoot gas-free engineering test equipment   |
| E4                     | CORE                    | Troubleshoot halon/Heptafluoropropane systems  |
| E4                     | CORE                    | Troubleshoot hydraulic valve control stations (e.g., Floodable Void Hydraulic Control (FVHC) stations, Hydraulic Valve Control Systems (HVCS), Miscellaneous Valve Hydraulic Control Station (MVHC), etc.) |
| E5                     | CORE                    | Troubleshoot installed Carbon Dioxide (CO2) systems  |
| E4                     | CORE                    | Troubleshoot installed eductor systems   |
| E4                     | CORE                    | Troubleshoot list control systems  |
| E4                     | CORE                    | Troubleshoot portable emergency pump (i.e., P-100)   |
| E4                     | CORE                    | Troubleshoot portable smoke generators   |
| E4                     | CORE                    | Troubleshoot sprinkler systems   |
| E4                     | CORE                    | Troubleshoot water mist systems  |
| E4                     | CORE                    | Troubleshoot water wash down systems   |

### **SHIPBOARD DAMAGE CONTROL TRAINING**

| <b><u>Paygrade</u></b> | <b><u>Task Type</u></b> | <b><u>Task Statements</u></b>                                     |
|------------------------|-------------------------|---|
| E5                     | CORE                    | Conduct casualty control team training                            |
| E5                     | NON-CORE                | Conduct crash and salvage training                                |
| E4                     | CORE                    | Conduct installed/portable Damage Control (DC) equipment training |
| E4                     | CORE                    | Conduct protective clothing training                              |
| E5                     | CORE                    | Evaluate Damage Control (DC) training drills                      |

## TECHNICAL ADMINISTRATION

| <u>Paygrade</u> | <u>Task Type</u> | <u>Task Statements</u>                         |
|-----------------|------------------|--|
| E4              | CORE             | Calculate daily draft reports                  |
| E5              | NON-CORE         | Draft Quality Assurance (QA) repair forms      |
| E5              | CORE             | Maintain Damage Control (DC) equipment records |
| E5              | CORE             | Review closure logs                            |
| E5              | NON-CORE         | Review engineering logs                        |
| E4              | NON-CORE         | Review Hazardous Material (HAZMAT) inventories |
| E5              | CORE             | Update Compartment Check Off Lists (CCOL)      |

**Job Title****Ship Survivability Systems Technician****Job Code****003021****Job Family**  
Management**NOC**  
TBD**Short Title (30 Characters)**  
SHIP SURVIVAL SYS TECHNICIAN**Short Title (14 Characters)**  
SHIP SURV TECH**Pay Plan**  
Enlisted**Career Field**  
DC**Other Relationships and Rules**  
NEC 7XXX and UXXX series and other NECs as assigned**Job Description**

Ship Survivability Systems Technicians do the work necessary for damage control, ship stability, firefighting, fire prevention, and Chemical, Biological, Radiological, and Nuclear Explosive (CBRNE) defense; instruct personnel in the methods of damage control and CBRNE defense; repair damage control equipment and systems; operate, repair, and troubleshoot installed firefighting systems and equipment, damage control equipment, and CBRNE defense equipment; train shipboard personnel in the operation, maintenance, and repair of damage control systems and equipment, life-saving devices, and firefighting methods; perform emergency repairs to decks, structures, pipes, and hulls by using emergency patching, plugging, and shoring; maintain and repair watertight closures and assorted fittings; and act as the ship's Fire Marshal and firefighting leaders and train ship's company in chemical, biological and radiological defense; work independently with very limited supervision; and mentor Ship Survivability Systems Maintainer(s).

**DoD Relationship**

**Group Title**      **DoD Code**  
Other Craftworkers,      179000  
N.E.C., General

**O\*NET Relationship**

**Occupation Title**      **SOC Code**      **Job Family**  
Emergency Management Directors      11-9161.00      Management

**Skills**

Monitoring  
Complex Problem Solving  
Critical Thinking  
Learning Strategies  
Quality Control Analysis  
Systems Evaluation  
Writing  
Equipment Maintenance  
Instructing  
Mathematics

**Abilities**

Information Ordering  
Mathematical Reasoning  
Written Comprehension  
Problem Sensitivity  
Oral Expression  
Deductive Reasoning  
Number Facility  
Written Expression  
Multi-limb Coordination  
Oral Comprehension

**CHEMICAL, BIOLOGICAL, RADIOLOGICAL, AND NUCLEAR EXPLOSIVE (CBRNE) DEFENSE**

| <b><u>Paygrade</u></b> | <b><u>Task Type</u></b> | <b><u>Task Statements</u></b>                            |
|------------------------|-------------------------|--|
| E6                     | CORE                    | Plot Radiological Control (RADCON) exposure stay times   |
| E6                     | CORE                    | Verify Mission Oriented Protective Posture (MOPP) levels |

**DAMAGE CONTROL**

| <b><u>Paygrade</u></b> | <b><u>Task Type</u></b> | <b><u>Task Statements</u></b>                                |
|------------------------|-------------------------|--|
| E7                     | CORE                    | Calculate effects of damage on ship's stability and buoyancy |
| E7                     | CORE                    | Calculate effects of emergency repair on ship's stability    |
| E7                     | CORE                    | Coordinate ballast and de-ballast evolutions                 |
| E6                     | CORE                    | Maintain ships stability                                     |
| E7                     | CORE                    | Perform ballasting/de-ballasting operations                  |

**SHIPBOARD DAMAGE CONTROL TRAINING**

| <b><u>Paygrade</u></b> | <b><u>Task Type</u></b> | <b><u>Task Statements</u></b>                                   |
|------------------------|-------------------------|---|
| E7                     | CORE                    | Conduct major fire declaration response training                |
| E7                     | CORE                    | Coordinate formal training for the Damage Control Training Team |

## TECHNICAL ADMINISTRATION

| <b><u>Paygrade</u></b> | <b><u>Task Type</u></b> | <b><u>Task Statements</u></b>                    |
|------------------------|-------------------------|--|
| E6                     | CORE                    | Administer Damage Control (DC) training programs |
| E7                     | NON-CORE                | Approve Quality Assurance (QA) repair forms      |
| E7                     | CORE                    | Assist in updates to Repair Party Manual (RPM)   |
| E6                     | NON-CORE                | Interpret heat stress survey results             |
| E6                     | CORE                    | Maintain Damage Control (DC) directives          |
| E7                     | CORE                    | Maintain draft report records                    |
| E7                     | CORE                    | Maintain Gas Free Engineering (GFE) Program      |
| E6                     | NON-CORE                | Review Quality Assurance (QA) repair forms       |
| E6                     | NON-CORE                | Update Quality Assurance (QA) repair forms       |