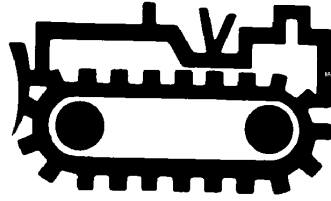


CHAPTER 31



EQUIPMENT OPERATOR (EO)

NAVPERS 18068F-31G
Change 88

Updated: October 2021

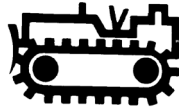
TABLE OF CONTENTS
EQUIPMENT OPERATOR (EO)

SCOPE OF RATING	EO-3
GENERAL INFORMATION	EO-4
EQUIPMENT OPERATOR	EO-5
CONSTRUCTION MANAGEMENT	EO-5
EARTHWORK	EO-6
EQUIPMENT MANAGEMENT	EO-7
MATERIAL HANDLING EQUIPMENT (MHE)	EO-7
MINERAL PRODUCTS	EO-7
PAVEMENTS	EO-7
TRANSPORTATION OPERATIONS	EO-8
WATER WELL	EO-8
WEIGHT HANDLING EQUIPMENT (WHE)	EO-8

NAVY ENLISTED OCCUPATIONAL STANDARD

FOR

EQUIPMENT OPERATOR (EO)



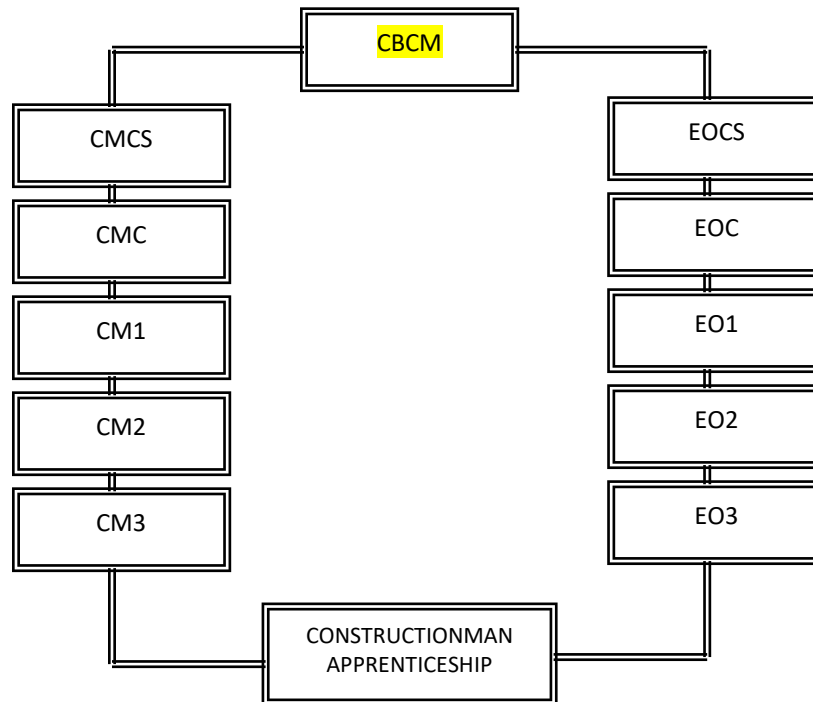
SCOPE OF RATING

Equipment Operators (EO) execute the operation and maintenance of automotive, material handling, weight handling, and construction equipment; direct and coordinate efforts of individuals and crews in performing construction projects, quality control inspections, earth-moving, road building, asphalt paving, soil stabilization, and various operations including transportation, blasting, quarry, mineral products, and water well; maintain administrative requirements for mobile and fixed equipment; maintain individual combat readiness; and perform tasks required in combat and disaster preparedness and recovery operations.

This Occupational Standard is to be incorporated in Volume I, Part B, of the Manual of Navy Enlisted Manpower and Personnel Classifications and Occupational Standards (NAVPERS 18068F) as Chapter 31.

GENERAL INFORMATION

CAREER PATTERN



Normal path of advancement to Chief Warrant Officer and Limited Duty Officer categories can be found in OPNAVINST 1420.1.

For rating entry requirements, refer to MILPERSMAN 1306-618.

SAFETY

The observance of Operational Risk Management (ORM) and proper safety precautions in all areas is an integral part of each billet and the responsibility of every Sailor; therefore, it is a universal requirement for all ratings.

* Career path updated to reflect rating name change to Seabee Master Chief (CBCM) – NAVADMIN 054/21 refers

Job Title**Equipment Operator****Job Code****001165****Job Family**

Construction and Extraction

NOC

TBD

Short Title (30 Characters)

EQUIPMENT OPERATOR

Short Title (14 Characters)

EQUIP OPERATOR

Pay Plan

Enlisted

Career Field

EO

Other Relationships and Rules

NEC BXXX series, 717B, 718B, 804G, 833A or other NECs as assigned

Job Description

Equipment Operators (EO) execute the operation and maintenance of automotive, material handling, weight handling, and construction equipment; direct and coordinate efforts of individuals and crews in performing construction projects, quality control inspections, earth-moving, road building, asphalt paving, soil stabilization, and various operations including transportation, blasting, quarry, mineral products, and water well; maintain administrative requirements for mobile and fixed equipment; maintain individual combat readiness; and perform tasks required in combat and disaster preparedness and recovery operations. Project managers have the responsibility of overseeing, organizing, and meeting quality assurance standards during the execution of construction projects.

DoD RelationshipGroup TitleConstruction Equipment
OperationDoD Code

171300

O*NET RelationshipOccupation TitleOperating Engineers and Other
Construction EquipmentSOC Code

47-2073.00

Job Family

Construction and Extraction

Skills*Operation and Control**Equipment Selection**Judgment and Decision Making**Management of Material Resources**Critical Thinking**Quality Control Analysis**Complex Problem Solving**Monitoring**Mathematics**Systems Evaluation***Abilities***Deductive Reasoning**Problem Sensitivity**Selective Attention**Visualization**Information Ordering**Oral Expression**Written Comprehension**Inductive Reasoning**Control Precision**Depth Perception***CONSTRUCTION MANAGEMENT****Paygrade****Task Type****Task Statements**

E6

NON-CORE

Conduct three-phase quality control inspections

E4

CORE

Develop construction activity summary sheets

E5

CORE

Develop construction environmental protection plans

E4

CORE

Develop construction estimates

E5

CORE

Develop construction project packages

E4

CORE

Develop construction project sketches and diagrams

E5

CORE

Develop construction safety plans

E5

CORE

Develop master activities

E5

CORE

Develop project three-phase quality control plans

E5

CORE

Establish construction site layouts

E5

CORE

Implement construction project drawings and specifications

E5

CORE

Input project data into construction management software and tools

E4

CORE

Inspect construction materials

E4

CORE

Inventory project tools and materials

E5

CORE

Lead construction project crew

E6

CORE

Manage construction project resources

CONSTRUCTION MANAGEMENT (CONT'D)

<u>Paygrade</u>	<u>Task Type</u>	<u>Task Statements</u>
E7	CORE	Manage construction projects
E7	CORE	Manage construction safety plans
E7	CORE	Manage job site construction operations (i.e., quality control and safety plan implementation, job site information board, level III chart, etc.)
E7	CORE	Manage project quality control plans
E7	CORE	Manage three-phase quality control process
E6	NON-CORE	Monitor construction project contracts
E5	CORE	Supervise construction project crews
E5	CORE	Supervise construction project safety operations
E6	CORE	Supervise environmental protection plans
E6	CORE	Supervise planning and estimating operations
E6	NON-CORE	Supervise project three-phase quality control process
E6	CORE	Turnover finished project (i.e., Build on Delivery (BOD))
E6	CORE	Validate construction project packages
E5	NON-CORE	Validate project surveys and elevation data

EARTHWORK

<u>Paygrade</u>	<u>Task Type</u>	<u>Task Statements</u>
E4	CORE	Classify soil types
E4	CORE	Compact earthwork materials
E4	CORE	Compute earthwork mathematical equations (i.e., elevations, grade stakes, material volumes, etc.)
E4	CORE	Conduct site and elevation surveys
E4	CORE	Develop earthwork sketches and diagrams
E5	CORE	Develop site drainage plans
E4	CORE	Distribute water (i.e., water wagon, water tanker, water truck, etc.)
E5	CORE	Establish finished grades
E4	CORE	Establish rough grades
E4	CORE	Excavate ditches
E4	CORE	Excavate materials
E4	CORE	Excavate trenches
E5	CORE	Interpret earthwork drawings and specifications
E4	CORE	Load soil and earth materials
E4	CORE	Prepare construction site (i.e., clearing, grubbing, stripping and pioneering, etc.)
E5	CORE	Stabilize earthwork materials using mechanical and chemical methods
E5	CORE	Supervise scraper operations
E4	CORE	Transport soil and earth materials
E5	CORE	Validate earthwork surveys and elevation data

EQUIPMENT MANAGEMENT

<u>Paygrade</u>	<u>Task Type</u>	<u>Task Statements</u>
E5	CORE	Dispatch equipment
E5	CORE	Manage collateral equipage
E6	CORE	Manage equipment licensing programs
E7	CORE	Manage transportation operations
E5	CORE	Supervise equipment yard operations
E6	CORE	Supervise transportation operations

MATERIAL HANDLING EQUIPMENT (MHE)

<u>Paygrade</u>	<u>Task Type</u>	<u>Task Statements</u>
E4	CORE	Configure non-suspended loads using Material Handling Equipment (MHE)
E4	CORE	Configure suspended loads using Material Handling Equipment (MHE)
E4	CORE	Handle cargo and materials using Material Handling Equipment (MHE) (i.e., extended boom, rough terrain, container handling, warehouse, forklift, etc.)
E4	CORE	Perform aircraft loading and unloading Material Handling Equipment (MHE) operations
E4	CORE	Perform explosive ordnance Material Handling Equipment (MHE) operations

MINERAL PRODUCTS

<u>Paygrade</u>	<u>Task Type</u>	<u>Task Statements</u>
E4	CORE	Drill rock
E7	NON-CORE	Manage ammunition and explosives qualification/certification programs
E7	CORE	Manage mineral products operations
E6	CORE	Manage quarry operations (i.e., mucking, sorting, transportation of blast rock, etc.)
E4	CORE	Mix concrete using transit mixer
E4	CORE	Perform quarry operations in accordance with quarry layout and plans (i.e., mucking, sorting, transportation of blast rock, etc.)
E4	CORE	Produce material utilizing mineral products plant equipment (i.e., asphalt plant, concrete plant, washing/screening plant, crushers, etc.)
E5	CORE	Supervise quarry operations (i.e., mucking, sorting, transportation of blast rock, etc.)
E4	CORE	Transport concrete using transit mixer

PAVEMENTS

<u>Paygrade</u>	<u>Task Type</u>	<u>Task Statements</u>
E5	CORE	Apply asphalt surface treatments (i.e., chip seal, prime and tack coats, slurry coat, etc.)
E5	CORE	Develop pavement sketches and diagrams
E6	CORE	Manage asphalt placement
E5	CORE	Place asphalt using asphalt paver
E4	CORE	Repair asphalt (i.e., patching a pothole, cold-patch, etc.)
E5	CORE	Supervise asphalt placement

TRANSPORTATION OPERATIONS

<u>Paygrade</u>	<u>Task Type</u>	<u>Task Statements</u>
E4	CORE	Conduct first echelon level maintenance on Civil Engineer Support Equipment (CESE)
E4	CORE	Conduct vehicle recovery operations (i.e., Medium Tactical Vehicle Replacement (MTVR), bulldozer, etc.)
E4	CORE	Configure loads for transportation (i.e., proper weight and size distribution, etc.)
E4	CORE	Distribute fuel
E4	CORE	Secure equipment and materials for transportation
E4	CORE	Transport equipment and materials
E4	CORE	Transport explosive ordnance materials
E4	CORE	Transport personnel
E4	CORE	Transport water (i.e., water tank, water truck, six-con, etc.)

WATER WELL

<u>Paygrade</u>	<u>Task Type</u>	<u>Task Statements</u>
E5	NON-CORE	Abandon wells
E4	CORE	Conduct corrective maintenance on water well equipment (i.e., rebuild mud pump, rebuild downhole hammer, etc.)
E5	NON-CORE	Determine drilling methods
E5	NON-CORE	Develop wells
E5	NON-CORE	Drill wells
E4	CORE	Prep site for drilling
E6	NON-CORE	Repair wells
E7	NON-CORE	Select water well drilling sites
E7	NON-CORE	Submit water well closeout reports
E7	NON-CORE	Supervise water well drilling operations

WEIGHT HANDLING EQUIPMENT (WHE)

<u>Paygrade</u>	<u>Task Type</u>	<u>Task Statements</u>
E6	NON-CORE	Certify Weight Handling Equipment (WHE)
E5	NON-CORE	Conduct crane specialty operations (i.e., clamshell, dragline, pile driving, etc.)
E4	CORE	Conduct first echelon maintenance on Weight Handling Equipment (WHE)
E4	CORE	Develop lift plan sketches and diagrams
E4	NON-CORE	Lift loads using hook block (i.e., cargo handling, amphibious, shipboard, etc.)
E5	NON-CORE	Load test Weight Handling Equipment (WHE)
E6	NON-CORE	Maintain Weight Handling Equipment (WHE) records
E6	NON-CORE	Manage Weight Handling Equipment (WHE) licensing programs
E4	CORE	Rig loads
E6	NON-CORE	Supervise crane crew operations
E7	NON-CORE	Supervise Weight Handling Equipment (WHE) load test
E6	NON-CORE	Supervise Weight Handling Equipment (WHE) maintenance