

CHAPTER 40



HOSPITAL CORPSMAN (HM)

NAVPERS 18068F- 40G
Change 100

Updated: October 2024

HOSPITAL CORPSMAN (HM)
TABLE OF CONTENTS

SCOPE OF RATING	HM-3
GENERAL INFORMATION	HM-4
HOSPITAL CORPSMAN BASIC	HM-5
ADMINISTRATION	HM-5
CLINICAL SUPPORT SERVICES	HM-6
EMERGENCY, FIELD, AND OPERATIONAL TREATMENT	HM-6
LOGISTICS	HM-9
PATIENT CARE	HM-10
PREVENTIVE AND OCCUPATIONAL MEDICINE	HM-14
TRAINING	HM-15

NAVY ENLISTED OCCUPATIONAL STANDARD

FOR

HOSPITAL CORPSMAN (HM)



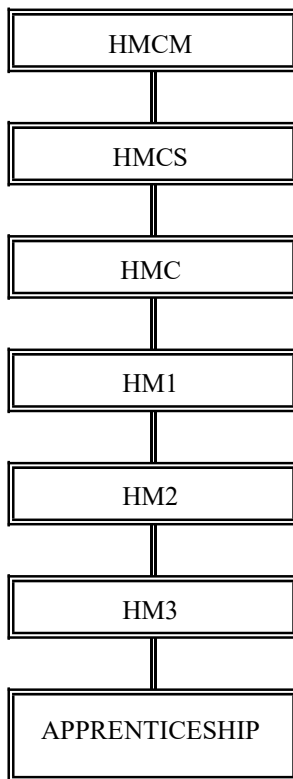
SCOPE OF RATING

Hospital Corpsmen (HM) serve ashore and afloat and with Marine Corps and Joint Services; assist in the prevention and treatment of disease, disability, and injury using medical aid and preventive medicine procedures; assist in the prevention and treatment of dental conditions; assist with physical examinations; provide patient care and assist in the administration of medicinal and parenteral solutions; perform general laboratory, pharmacy, and other patient support services; assist in the administrative supply and accounting procedures within medical departments; serve as sole medical personnel or battlefield Corpsman while assigned to field/operational units; perform Tactical Combat Casualty Care (TCCC); instruct medical and non-medical personnel in medical aid, self-aid, personal hygiene, and health records maintenance; assist in the transportation of the sick and injured; provide assistance in the maintenance of environmental and occupational health standards; assist in the prevention and treatment of Chemical, Biological, Radiological, Nuclear, and Explosive (CBRNE) casualties and other contingencies; perform specialized functions within the operational forces, clinical specialties, and administrative departments and may be assigned independent of a Medical provider; and perform supervisory, technical, planning, and management functions in support of medical readiness and quality healthcare delivery.

This Occupational Standard is to be incorporated in Volume I, Part B, of the Manual of Navy Enlisted Manpower and Personnel Classifications and Occupational Standards (NAVPERS 18068F) in Chapter 40.

GENERAL INFORMATION

CAREER PATTERN



Normal path of advancement to Chief Warrant Officer and Limited Duty Officer categories can be found in OPNAVINST 1420.1.

For rating entry requirements, refer to MILPERSMAN 1306-618.

SAFETY

The observance of Operational Risk Management (ORM) and proper safety precautions in all areas is an integral part of each billet and the responsibility of every Sailor; therefore, it is a universal requirement for all ratings.

Job Title**Hospital Corpsman Basic****Job Code****001255****Job Family**

Healthcare Practitioners and Technical

NOC

TBD

Short Title (30 Characters)

HOSPITAL CORPSMAN BASIC

Short Title (14 Characters)

CORPSMAN

Pay Plan

Enlisted

Career Field

HM

Other Relationships and Rules

NEC LXXX and 7XXX series and other NECs as assigned

Job Description

Hospital Corpsmen Basic serve ashore and afloat and with Marine Corps and Joint Services; assist in the prevention and treatment of disease, disability, and injury using medical aid and preventive medicine procedures; assist in the prevention and treatment of dental conditions; assist with physical examinations; provide patient care and assist in the administration of medicinal and parenteral solutions; perform general laboratory, pharmacy, and other patient support services; assist in the administrative supply and accounting procedures within medical departments; serve as sole medical personnel or battlefield Corpsman while assigned to field/operational units; perform Tactical Combat Casualty Care (TCCC); instruct medical and non-medical personnel in medical aid, self-aid, personal hygiene, and health records maintenance; assist in the transportation of the sick and injured; provide assistance in the maintenance of environmental and occupational health standards; assist in the prevention and treatment of Chemical, Biological, Radiological, Nuclear, and Explosive (CBRNE) casualties and other contingencies; and may be assigned independent of a Medical provider.

DoD Relationship**O*NET Relationship****Group Title**Medical Care and
Treatment, General**DoD Code**

130000

Occupation Title

Emergency Medical Technicians

SOC Code

29-2042.00

Job FamilyHealthcare Practitioners and
Technical**Skills***Critical Thinking**Complex Problem Solving**Judgment and Decision Making**Equipment Selection**Management of Material Resources**Writing**Monitoring**Operation and Control**Coordination**Speaking***Abilities***Deductive Reasoning**Manual Dexterity**Information Ordering**Problem Sensitivity**Oral Expression**Inductive Reasoning**Speed of Closure**Finger Dexterity**Written Expression**Written Comprehension***ADMINISTRATION****Paygrade****Task Type****Task Statements**

E5

CORE

Advise beneficiaries on Primary Care Manager (PCM) selection process

E4

CORE

Advise patients on Health Insurance Portability and Accountability Act (HIPAA)

E6

CORE

Approve clinical schedules

E5

CORE

Audit annual verifications of medical and dental records

E5

CORE

Conduct medical and dental organizational performance improvement programs

E7

CORE

Coordinate health services support manpower requirements fulfillments

E6

CORE

Coordinate medical and dental organizational performance improvement programs

E4

CORE

Document patient dispositions (e.g., no duty, light duty, full duty, etc.)

E5

CORE

Draft clinical schedules

E6

CORE

Enforce Health Insurance Portability and Accountability Act (HIPAA) compliance

E4

CORE

Enforce institutional standards of care by platform (e.g., The Joint Commission (TJC), Medical Inspector General (MEDIG), etc.)

E6

CORE

Evaluate health services Quality Assurance (QA) programs

E5

CORE

Maintain clinical schedules

E5

CORE

Manage aid stations

E5

CORE

Manage health services Quality Assurance (QA) programs

ADMINISTRATION (CONT'D)

<u>Paygrade</u>	<u>Task Type</u>	<u>Task Statements</u>
E7	CORE	Manage medical and dental organizational performance improvement programs
E4	CORE	Manage medical and dental records
E4	CORE	Perform annual verifications of medical and dental records
E6	CORE	Prepare decedent affairs messages
E4	CORE	Prepare medical and dental reports
E4	CORE	Prepare monthly morbidity reports
E4	CORE	Process consultation forms
E4	CORE	Provide birth certificate data
E4	CORE	Provide death certificate data
E7	CORE	Review decedent affairs messages for accuracy
E7	CORE	Submit casualty estimates
E7	CORE	Submit medical and dental intelligence reports
E7	CORE	Submit monthly morbidity reports
E6	CORE	Validate monthly morbidity reports
E7	CORE	Validate occupational records (e.g., pest control, water testing, laboratory logs, etc.)
E5	CORE	Verify healthcare professionals' certifications (e.g., Basic Life Support (BLS), Tactical Combat Casualty Care (TCCC), Hospital Corpsman Skills Basic (HMSB), etc.)
E6	CORE	Verify medical and dental documents for Quality Assurance (QA)

CLINICAL SUPPORT SERVICES

<u>Paygrade</u>	<u>Task Type</u>	<u>Task Statements</u>
E4	NON-CORE	Assist with clinical imaging
E4	CORE	Assist with walking blood bank (WBB) procedures
E4	CORE	Dispense medications (e.g., mechanical, manual, etc.)
E4	CORE	Document laboratory test results
E4	CORE	Interpret laboratory test results
E4	CORE	Perform basic laboratory tests (e.g., waived testing, point-of-care testing (POCT), etc.)
E4	CORE	Prepare laboratory test request forms
E4	CORE	Reconstitute medications and vaccines for administration
E4	CORE	Report abnormal laboratory test results
E4	CORE	Verify laboratory test request forms

EMERGENCY, FIELD, AND OPERATIONAL TREATMENT

<u>Paygrade</u>	<u>Task Type</u>	<u>Task Statements</u>
E4	CORE	Administer intraosseous (IO) infusions (e.g., fluids, medications, etc.)
E4	CORE	Apply occlusive dressings
E4	CORE	Apply patient restraints
E4	CORE	Apply tourniquets
E4	CORE	Assess Chemical, Biological, Radiological, Nuclear, and Explosive (CBRNE) contaminated patients
E4	CORE	Assess cold casualties

EMERGENCY, FIELD, AND OPERATIONAL TREATMENT (CONT'D)

<u>Paygrade</u>	<u>Task Type</u>	<u>Task Statements</u>
E4	CORE	Assess heat casualties
E4	CORE	Assess patients for abdominal injuries
E4	CORE	Assess patients for burns (e.g., thermal, chemical, electrical, light, radiological, etc.)
E4	CORE	Assess patients for cardiovascular (CV) system emergencies
E4	CORE	Assess patients for constitutional emergencies (e.g., high fever)
E4	CORE	Assess patients for dental emergencies
E4	CORE	Assess patients for endocrine system emergencies
E4	NON-CORE	Assess patients for envenomations
E4	CORE	Assess patients for external hemorrhages
E4	CORE	Assess patients for gastrointestinal (GI) system emergencies
E4	CORE	Assess patients for genitourinary (GU) system emergencies
E4	CORE	Assess patients for head, eyes, ears, nose, and throat (HEENT) emergencies
E4	CORE	Assess patients for hematologic system, lymphatic system, and immune system/allergy emergencies (e.g., anaphylaxis)
E4	CORE	Assess patients for human and animal bites
E4	CORE	Assess patients for integumentary system (i.e., dermatologic) emergencies
E4	CORE	Assess patients for internal hemorrhages
E4	CORE	Assess patients for intoxications, poisonings, and hazardous material exposures
E4	CORE	Assess patients for mental health emergencies (e.g., threat to self or others)
E4	CORE	Assess patients for musculoskeletal (MSK) system emergencies
E4	CORE	Assess patients for nervous system emergencies (e.g., traumatic brain injuries (TBI), seizures, etc.)
E4	CORE	Assess patients for respiratory system emergencies
E4	CORE	Assess patients for shock
E4	CORE	Assess placements of tourniquets
E4	CORE	Assess scene safety and Situational Awareness (SA)
E4	CORE	Assist triage officers during Approvualty incidents (MCI)
E4	CORE	Assist with childbirth procedures
E4	CORE	Conduct quarantine protocols (e.g., ships, stations, units, personnel, etc.)
E4	CORE	Coordinate medical evacuations (e.g., urgent, priority, routine, etc.)
E7	CORE	Delineate mass casualty protocols
E7	CORE	Delineate quarantine protocols (e.g., ships, stations, units, personnel, etc.)
E4	CORE	Direct personnel in tactical triage procedures
E7	CORE	Disseminate quarantine protocols (e.g., ships, stations, units, personnel, etc.) and information
E4	CORE	Document medical and dental emergencies
E4	NON-CORE	Establish chest tube thoracostomies (TT)
E4	CORE	Establish patent airways (e.g., head tilt-chin lift, jaw-thrust, etc.)
E4	CORE	Establish surgical airways (i.e., cricothyrotomies)
E4	CORE	Execute medical evacuations (e.g., urgent, priority, routine, etc.)

EMERGENCY, FIELD, AND OPERATIONAL TREATMENT (CONT'D)

<u>Paygrade</u>	<u>Task Type</u>	<u>Task Statements</u>
E4	CORE	Identify human remains
E6	CORE	Initiate quarantine protocols (e.g., ships, stations, units, personnel, etc.)
E4	CORE	Insert airway adjuncts (i.e., oropharyngeal airways (OPA) and nasopharyngeal airways (NPA))
E4	CORE	Insert artificial airways (e.g., endotracheal tubes (ETT), laryngeal mask airways (LMA), etc.)
E5	CORE	Inspect battle dressing stations (BDS)
E4	CORE	Maintain patent airways (e.g., head tilt-chin lift, jaw-thrust, etc.)
E4	CORE	Manage battle dressing stations (BDS)
E4	CORE	Perform blood transfusions
E4	CORE	Perform emergency field diagnostic tests (e.g., halo sign tests, digital rectal exams (DRE), etc.)
E4	CORE	Perform healthcare provider Basic Life Support (BLS)
E4	CORE	Perform needle decompressions
E4	CORE	Perform patient movement techniques (i.e., lifts, carries, and drags)
E4	CORE	Perform tactical triage procedures
E6	CORE	Plan mass casualty protocols
E6	CORE	Plan quarantine protocols (e.g., ships, stations, units, personnel, etc.)
E4	CORE	Remove patient restraints
E4	CORE	Remove superficial foreign bodies
E4	CORE	Submit casualty evacuation turnover reports
E4	CORE	Transport patients via patient carrying devices (e.g., litters, stretchers, sleds, stair chairs, etc.)
E4	CORE	Treat Chemical, Biological, Radiological, Nuclear, and Explosive (CBRNE) contaminated patients
E4	CORE	Treat cold casualties
E4	CORE	Treat heat casualties
E4	CORE	Treat patients for burns (e.g., thermal, chemical, electrical, light, radiological, etc.)
E4	CORE	Treat patients for cardiovascular (CV) system emergencies
E4	CORE	Treat patients for constitutional emergencies (e.g., high fever)
E4	CORE	Treat patients for dental emergencies (e.g., dental first aid)
E4	CORE	Treat patients for endocrine system emergencies
E4	NON-CORE	Treat patients for envenomations
E4	CORE	Treat patients for external hemorrhages
E4	CORE	Treat patients for gastrointestinal (GI) system emergencies
E4	CORE	Treat patients for genitourinary (GU) system emergencies
E4	CORE	Treat patients for head, eyes, ears, nose, and throat (HEENT) emergencies
E4	CORE	Treat patients for hematologic system, lymphatic system, and immune system/allergy emergencies (e.g., anaphylaxis)
E4	CORE	Treat patients for human and animal bites
E4	CORE	Treat patients for integumentary system (i.e., dermatologic) emergencies

EMERGENCY, FIELD, AND OPERATIONAL TREATMENT (CONT'D)

<u>Paygrade</u>	<u>Task Type</u>	<u>Task Statements</u>
E4	CORE	Treat patients for internal hemorrhages (e.g., junctional tourniquets, pelvic binders, etc.)
E4	CORE	Treat patients for intoxications, poisonings, and hazardous material exposures
E4	CORE	Treat patients for mental health emergencies (e.g., de-escalate emotionally unstable patients)
E4	CORE	Treat patients for musculoskeletal (MSK) system emergencies
E4	CORE	Treat patients for nervous system emergencies (e.g., traumatic brain injuries (TBI), seizures, etc.)
E4	CORE	Treat patients for respiratory system emergencies
E4	CORE	Treat patients for shock

LOGISTICS

<u>Paygrade</u>	<u>Task Type</u>	<u>Task Statements</u>
E7	CORE	Approve medical evacuation protocol plans (e.g., urgent, priority, routine, etc.)
E6	CORE	Assist in coordination of joint medical operational plans
E6	CORE	Assist in drafting joint medical operational plans
E7	CORE	Conduct Area of Operations (AO) medical familiarization tours
E6	CORE	Conduct site surveys of medical infrastructure (e.g., emergency medical systems (EMS), hospitals, detention centers, etc.)
E7	CORE	Coordinate health services support elements
E7	CORE	Coordinate health services support logistics
E7	CORE	Coordinate joint medical operational plans
E6	CORE	Coordinate staging and prepositioning of medical and dental equipment and supplies
E6	CORE	Develop disaster and contingency plans
E4	CORE	Dispose of medical and dental consumables
E4	CORE	Dispose of medications
E7	CORE	Draft joint medical operational plans
E7	CORE	Draft joint medical operational readiness plans
E5	CORE	Inspect authorized medical allowance list (AMAL) and authorized dental allowance list (ADAL) inventories
E4	CORE	Inspect decontamination stations
E4	CORE	Inspect medical and dental equipment
E6	CORE	Inventory controlled substances
E4	CORE	Inventory decontamination stations
E4	CORE	Inventory medical and dental equipment and supplies (e.g., authorized medical allowance list (AMAL), authorized dental allowance list (ADAL), medical kits, etc.)
E4	CORE	Manage medical and dental equipment and supplies (e.g., authorized medical allowance list (AMAL), authorized dental allowance list (ADAL), medical kits, etc.)
E4	CORE	Perform preventive maintenance on medical and dental equipment
E4	CORE	Perform user-level repair on medical and dental equipment
E6	CORE	Plan medical evacuation protocols (e.g., urgent, priority, routine, etc.)
E4	CORE	Prepare accident and injury (A&I) reports
E6	CORE	Prepare medical and dental materiel readiness postures and conditions reports

LOGISTICS (CONT'D)

<u>Paygrade</u>	<u>Task Type</u>	<u>Task Statements</u>
E6	CORE	Prepare Navy Medicine Augmentation Program (NMAP) requests
E4	CORE	Prepare sick and injured (S&I) reports
E4	CORE	Report corrective maintenance needs for medical and dental equipment
E6	CORE	Report operational ineffectiveness
E7	CORE	Report site surveys of medical infrastructure (e.g., emergency medical systems (EMS), hospitals, detention centers, etc.)
E4	CORE	Stock medical and dental equipment and supplies (e.g., authorized medical allowance list (AMAL), authorized dental allowance list (ADAL), medical kits, etc.)
E6	CORE	Submit accident and injury (A&I) reports
E6	CORE	Submit sick and injured (S&I) reports
E4	CORE	Test medical and dental equipment
E4	CORE	Troubleshoot medical and dental equipment
E7	CORE	Validate disaster and contingency plans
E7	CORE	Validate joint medical operational plans
E7	CORE	Validate medical and dental materiel readiness postures and conditions reports
E7	CORE	Validate operational ineffectiveness reports
E7	CORE	Validate staging and prepositioning of medical and dental equipment and supplies

PATIENT CARE

<u>Paygrade</u>	<u>Task Type</u>	<u>Task Statements</u>
E4	CORE	Acquire patient data (e.g., past medical history, history of present illness, etc.)
E4	CORE	Administer buccal medications
E4	CORE	Administer immersion therapies
E4	CORE	Administer inhalation and nebulization medications and therapies
E4	CORE	Administer intradermal (ID) injections and skin tests
E4	CORE	Administer intramuscular (IM) injections
E4	CORE	Administer intravenous (IV) injections
E4	CORE	Administer intravenous (IV) medications and therapies
E4	CORE	Administer local anesthesia
E4	CORE	Administer nasal medications and therapies
E4	CORE	Administer nasogastric (NG) tube, orogastric (OG) tube, gastric (G) tube, and jejunostomy (J) tube medications and therapies
E4	CORE	Administer ocular medications and therapies (i.e., ophthalmic)
E4	CORE	Administer oral medications and therapies
E4	CORE	Administer otic medications and therapies
E4	CORE	Administer rectal medications and therapies
E4	CORE	Administer subcutaneous (SC) injections
E4	CORE	Administer sublingual (SL) medications
E4	CORE	Administer topical medications and therapies
E4	CORE	Administer transdermal medications and therapies
E4	CORE	Administer vaginal medications and therapies

PATIENT CARE (CONT'D)

<u>Paygrade</u>	<u>Task Type</u>	<u>Task Statements</u>
E4	CORE	Advise patients on ethical issues (e.g., pregnancy, informed consent, confidentiality, end of life care, etc.)
E7	CORE	Advise patients on medico-legal issues
E4	CORE	Advocate for patient healthcare needs
E4	CORE	Aid patients in activities of daily living (ADL)
E4	CORE	Analyze patient charts for continuity of care
E4	CORE	Analyze patient data (e.g., past medical history, history of present illness, etc.)
E4	CORE	Apply orthopedic/musculoskeletal (MSK) devices
E4	CORE	Assess airways
E4	CORE	Assess general appearance of patients
E4	CORE	Assess intradermal (ID) skin tests
E4	CORE	Assess objective vital sign trends (i.e., heart rate (HR), respiratory rate (RR), blood pressure (BP), temperature, and oxygen saturation (SpO2))
E4	CORE	Assess patients and medications for contraindications
E4	CORE	Assess patients for constitutional symptoms (e.g., exhaustion, malaise, weight loss, etc.)
E4	CORE	Assess patients for medication and vaccination side effects, adverse events, and interactions
E4	CORE	Assess patients for pain
E4	CORE	Assess patients for side effects and adverse events to treatments and procedures
E4	CORE	Assist in performing incision and drainage (I&D) procedures
E4	CORE	Assist in treating cardiovascular (CV) system abnormalities
E4	CORE	Assist in treating communicable diseases
E4	CORE	Assist in treating endocrine system abnormalities
E4	CORE	Assist in treating gastrointestinal (GI) system abnormalities
E4	CORE	Assist in treating genitourinary (GU) system abnormalities
E4	CORE	Assist in treating head, eyes, ears, nose, and throat (HEENT) abnormalities
E4	CORE	Assist in treating hematologic system, lymphatic system, and immune system/allergy abnormalities
E4	CORE	Assist in treating integumentary system (i.e., dermatologic) abnormalities
E4	CORE	Assist in treating mental health issues
E4	CORE	Assist in treating musculoskeletal (MSK) system abnormalities
E4	CORE	Assist in treating nervous system abnormalities
E4	CORE	Assist in treating patients for constitutional symptoms (e.g., exhaustion, malaise, weight loss, etc.)
E4	CORE	Assist in treating respiratory system abnormalities
E4	CORE	Assist patients in utilization of durable medical equipment (DME)
E4	CORE	Assist patients with occupational therapy (OT)
E4	CORE	Assist patients with physical therapy (PT)
E4	CORE	Assist with the administration of implanted devices and medications (e.g., birth control)
E4	CORE	Assist with the administration of intrathecal medications

PATIENT CARE (CONT'D)

<u>Paygrade</u>	<u>Task Type</u>	<u>Task Statements</u>
E4	CORE	Assist with the removal of artificial airways (e.g., endotracheal tubes (ETT), laryngeal mask airways (LMA), etc.)
E4	CORE	Calculate medication dosages
E4	CORE	Close wounds with medical adhesives, staples, and dressing materials (e.g., butterfly bandages, wound closure strips, etc.)
E4	CORE	Close wounds with sutures
E4	CORE	Communicate treatment plans to providers
E6	CORE	Conduct health benefits counselings
E4	CORE	Coordinate health services appointment requirements fulfillments
E4	CORE	Counsel patients on Privacy Act Statement
E4	CORE	Counsel patients regarding treatment plans
E4	CORE	Create patient care encounters
E4	CORE	Direct personnel in clinical triage procedures
E4	CORE	Discontinue (DC) intravenous (IV) catheters
E4	CORE	Document intradermal (ID) skin test results
E4	CORE	Document patient care
E4	CORE	Document physical examinations
E4	CORE	Draft treatment plans
E4	CORE	Educate patients on prescribed diets
E4	CORE	Educate patients on proper use of durable medical equipment (DME)
E4	CORE	Insert intravenous (IV) catheters
E4	CORE	Insert nasogastric (NG) tubes and orogastric (OG) tubes
E4	CORE	Insert non-surgical urinary catheters
E4	CORE	Isolate infectious patients
E4	CORE	Maintain artificial airways (e.g., endotracheal tubes (ETT), laryngeal mask airways (LMA), etc.)
E4	CORE	Maintain intravenous (IV) medication and therapy administrations and accesses (e.g., saline locks, site inspections, etc.)
E4	CORE	Maintain patient privacy
E4	CORE	Maintain sterile fields
E4	CORE	Maintain surgical and non-surgical urinary catheters
E4	CORE	Manage fluid intake
E4	CORE	Manage patient diet compliance
E4	CORE	Monitor fluid output
E4	CORE	Obtain laboratory test samples (e.g., urine samples, nasal swabs, etc.) and specimens (e.g., finger stick and venipuncture blood specimens)
E4	CORE	Obtain objective vital sign values (i.e., heart rate (HR), respiratory rate (RR), blood pressure (BP), temperature, and oxygen saturation (SpO2))
E4	CORE	Participate in patient rounds
E4	CORE	Perform cardiovascular (CV) system assessments
E4	CORE	Perform clinical triage procedures
E4	CORE	Perform communicable disease assessments

PATIENT CARE (CONT'D)

<u>Paygrade</u>	<u>Task Type</u>	<u>Task Statements</u>
E4	CORE	Perform endocrine system assessments
E4	CORE	Perform gastrointestinal (GI) system assessments
E4	CORE	Perform genitourinary (GU) system assessments
E4	CORE	Perform gross hearing acuity tests
E4	CORE	Perform head, eyes, ears, nose, and throat (HEENT) assessments
E4	CORE	Perform hematologic system, lymphatic system, and immune system/allergy assessments
E4	CORE	Perform integumentary system (i.e., dermatologic) assessments
E4	CORE	Perform medication reconciliations
E4	CORE	Perform mental health assessments
E4	CORE	Perform musculoskeletal (MSK) system assessments
E4	CORE	Perform nervous system assessments
E4	CORE	Perform patient turnovers
E4	CORE	Perform physical examinations
E4	CORE	Perform post-operative care
E4	CORE	Perform pre-operative procedures
E4	CORE	Perform respiratory system assessments
E4	CORE	Perform wound inspections (e.g., infections, healing signs, etc.)
E4	CORE	Perform wound management (e.g., dressing changes, irrigation, cleaning, etc.)
E4	CORE	Prepare hospital beds
E4	CORE	Prepare patients for transport
E4	CORE	Provide discharge instructions to patients
E6	CORE	Provide formal counselings to patients on ethical issues (e.g., pregnancy, informed consent, confidentiality, end of life care, etc.)
E4	CORE	Provide healthcare-related customer service (e.g., service best practices, effective communication, problem resolutions, etc.)
E4	CORE	Remove airway adjuncts (i.e., oropharyngeal airways (OPA) and nasopharyngeal airways (NPA))
E4	CORE	Remove nasogastric (NG) tubes and orogastric (OG) tubes
E4	CORE	Remove non-surgical urinary catheters
E4	CORE	Remove orthopedic/musculoskeletal (MSK) devices
E4	CORE	Remove sutures and staples
E4	CORE	Report objective vital sign values (i.e., heart rate (HR), respiratory rate (RR), blood pressure (BP), temperature, and oxygen saturation (SpO2))
E4	CORE	Report side effects and adverse events to medications and vaccinations
E4	CORE	Report side effects and adverse events to treatments and procedures
E4	CORE	Schedule health services appointments
E4	CORE	Set up electrocardiogram (ECG/EKG) equipment
E4	CORE	Set up humidifiers
E4	CORE	Set up oxygen equipment
E4	CORE	Set up patient monitors
E4	CORE	Set up sterile fields

PATIENT CARE (CONT'D)

<u>Paygrade</u>	<u>Task Type</u>	<u>Task Statements</u>
E4	CORE	Set up suction equipment
E4	CORE	Set up vaporizers
E4	CORE	Set up ventilators
E4	CORE	Suction artificial airways (e.g., endotracheal tubes (ETT), laryngeal mask airways (LMA), etc.)
E4	CORE	Suction natural airways
E4	CORE	Suction oral cavities
E4	CORE	Translate medical terminology for patients
E4	CORE	Treat non-emergent oral conditions
E4	CORE	Treat patients for pain
E4	CORE	Verify specimen and sample labels

PREVENTIVE AND OCCUPATIONAL MEDICINE

<u>Paygrade</u>	<u>Task Type</u>	<u>Task Statements</u>
E4	CORE	Analyze dental readiness data
E4	CORE	Analyze medical readiness data
E4	CORE	Assist others in donning and doffing surgical gowns and gloves
E4	CORE	Brief medical and dental readiness
E4	CORE	Clean sterilizers and sanitizers
E4	CORE	Collect regulated medical waste
E5	CORE	Conduct health and comfort inspections
E4	CORE	Conduct health promotions education
E5	CORE	Conduct medical workspace safety inspections
E4	CORE	Conduct preliminary interviews of personnel exposed to communicable diseases
E4	CORE	Disinfect medical and dental equipment and instruments
E4	CORE	Disinfect treatment rooms
E4	CORE	Dispose of regulated medical waste
E6	CORE	Disseminate disease alert report information
E4	CORE	Document disposal of regulated medical waste
E4	CORE	Doff sterile surgical gowns and gloves
E4	CORE	Don sterile surgical gowns and gloves
E4	CORE	Draft command medical and dental readiness plans
E4	CORE	Enforce sharps safe handling precautions
E4	CORE	Fit Personal Protective Equipment (PPE) (e.g., hearing protection devices) and occupational health equipment (e.g., respirators)
E4	CORE	Inspect food service personnel (e.g., Culinary Specialists (CS), Food Service Attendants (FSA), etc.) for personal hygiene
E4	CORE	Inspect food service personnel (e.g., Culinary Specialists (CS), Food Service Attendants (FSA), etc.) for proper food handling procedures
E4	CORE	Inspect food storage and service areas
E5	CORE	Inspect for sterilization procedure compliance
E4	NON-CORE	Inspect messing and food service facilities

PREVENTIVE AND OCCUPATIONAL MEDICINE (CONT'D)

<u>Paygrade</u>	<u>Task Type</u>	<u>Task Statements</u>
E6	CORE	Interpret disease alert reports
E4	CORE	Interpret water test results
E4	CORE	Issue Personal Protective Equipment (PPE) (e.g., hearing protection devices) and occupational health equipment (e.g., respirators)
E4	CORE	Maintain non-surgical universal precautions
E4	CORE	Maintain surgical universal precautions
E5	CORE	Manage command adherence to medical and dental readiness plans
E5	CORE	Manage medical and dental readiness database programs
E5	CORE	Manage regulated medical waste programs
E4	CORE	Organize medical workspace areas to prevent injuries
E4	CORE	Package regulated medical waste
E4	NON-CORE	Perform audiogram tests
E5	CORE	Perform habitability inspections
E4	CORE	Perform heat stress monitoring procedures
E4	CORE	Perform pest surveillance
E4	CORE	Perform preliminary investigations of foodborne illnesses
E4	CORE	Perform refrigerator and freezer temperature checks
E4	CORE	Perform standard vision tests (e.g., acuity, color, depth, etc.)
E4	CORE	Prepare heat and cold casualty reports
E4	CORE	Prepare medical and dental equipment and instruments for sterilization
E4	CORE	Process regulated medical waste
E4	CORE	Provide medical recommendations for camp layouts
E4	CORE	Record sterilization data
E4	CORE	Report water test results
E4	CORE	Sort regulated medical waste
E4	NON-CORE	Sterilize medical and dental equipment and instruments
E4	CORE	Submit heat and cold casualty reports
E5	CORE	Submit sharp instrument stick reports
E4	CORE	Test water for bacteria
E4	CORE	Test water for halogen residuals
E4	CORE	Transport regulated medical waste
E4	CORE	Update dental readiness data
E4	CORE	Update medical readiness data
E5	CORE	Validate heat and cold casualty reports

TRAINING

<u>Paygrade</u>	<u>Task Type</u>	<u>Task Statements</u>
E4	CORE	Conduct medical and dental training
E5	CORE	Determine medical and dental training requirements
E5	CORE	Develop medical and dental training
E6	CORE	Educate staff on ethical issues (e.g., pregnancy, informed consent, confidentiality, end of life care, etc.)

TRAINING (CONT'D)

<u>Paygrade</u>	<u>Task Type</u>	<u>Task Statements</u>
E7	CORE	Educate staff on medico-legal issues
E6	CORE	Evaluate medical and dental training
E4	CORE	Maintain departmental training jackets
E5	CORE	Manage medical and dental training programs
E5	CORE	Train medical personnel on triage procedures
E4	CORE	Train personnel on Basic Life Support (BLS) subjects
E5	CORE	Train personnel on Hospital Corpsman Skills Basic (HMSB) subjects
E4	CORE	Train personnel on Tactical Combat Casualty Care (TCCC) subjects