

# CHAPTER 41



## HOSPITALMAN (HN)

NAVPERS 18068F- 41C  
Change 100

Updated: October 2024

TABLE OF CONTENTS  
HOSPITALMAN (HN)

<b>SCOPE OF RATING</b>	<b>HN-3</b>
<b>GENERAL INFORMATION</b>	<b>HN-4</b>
<b>HOSPITALMAN</b>	<b>HN-5</b>
ADMINISTRATION	HN-5
CLINICAL SUPPORT SERVICES	HN-5
EMERGENCY, FIELD, AND OPERATIONAL TREATMENT	HN-6
LOGISTICS	HN-8
PATIENT CARE	HN-8
PREVENTIVE AND OCCUPATIONAL MEDICINE	HN-12
TRAINING	HN-13

NAVY ENLISTED OCCUPATIONAL STANDARDS

FOR

Hospitalman (HN)

**APPRENTICESHIP**



SCOPE OF RATING

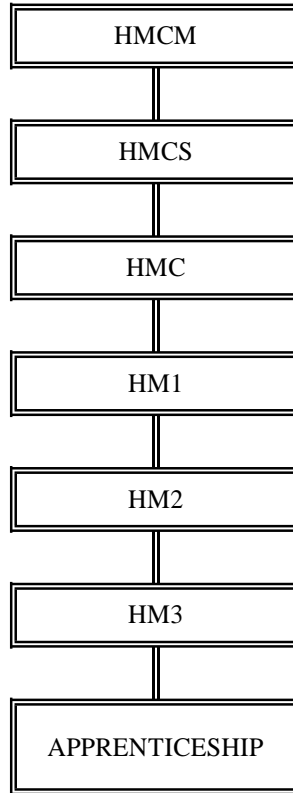
Hospitalmen (HN) serve ashore and afloat and with Marine Corps and Joint Services; assist in the prevention and treatment of disease, disability, and injury using medical aid and preventive medicine procedures; assist in the prevention and treatment of dental conditions; assist with physical examinations; provide patient care and assist in the administration of medicinal and parenteral solutions; perform general laboratory, pharmacy, and other patient support services; assist in the administrative supply and accounting procedures within medical departments; serve as sole medical personnel or battlefield Corpsman while assigned to field/operational units; perform Tactical Combat Casualty Care (TCCC); instruct medical and non-medical personnel in medical aid, self-aid, personal hygiene, and health records maintenance; assist in the transportation of the sick and injured; provide assistance in the maintenance of environmental and occupational health standards; assist in the prevention and treatment of Chemical, Biological, Radiological, Nuclear, and Explosive (CBRNE) casualties and other contingencies; and may be assigned independent of a Medical provider.

---

These Occupational Standards are to be incorporated in Volume I, Part B, of the Manual of Navy Enlisted Manpower and Personnel Classifications and Occupational Standards (NAVPERS 18068F) as Chapter 41.

## GENERAL INFORMATION

### CAREER PATTERN



Normal path of advancement to Chief Warrant Officer and Limited Duty Officer categories can be found in OPNAVINST 1420.1.

For rating entry requirements, refer to MILPERSMAN 1306-618.

#### **SAFETY**

**The observance of Operational Risk Management (ORM) and proper safety precautions in all areas is an integral part of each billet and the responsibility of every Sailor; therefore, it is a universal requirement for all ratings.**

**Job Title****HOSPITALMAN****Job Code****003358****Job Family**

Healthcare Practitioners and Technical

**NOC**

TBD

**Short Title (30 Characters)**

HOSPITALMAN

**Short Title (14 Characters)**

HOSPITALMAN

**Pay Plan**

Enlisted

**Career Field**

HN

**Other Relationships and Rules**

None

**Job Description**

Hospitalmen serve ashore and afloat and with Marine Corps and Joint Services; assist in the prevention and treatment of disease, disability, and injury using medical aid and preventive medicine procedures; assist in the prevention and treatment of dental conditions; assist with physical examinations; provide patient care and assist in the administration of medicinal and parenteral solutions; perform general laboratory, pharmacy, and other patient support services; assist in the administrative supply and accounting procedures within medical departments; serve as sole medical personnel or battlefield Corpsman while assigned to field/operational units; perform Tactical Combat Casualty Care (TCCC); instruct medical and non-medical personnel in medical aid, self-aid, personal hygiene, and health records maintenance; assist in the transportation of the sick and injured; provide assistance in the maintenance of environmental and occupational health standards; assist in the prevention and treatment of Chemical, Biological, Radiological, Nuclear, and Explosive (CBRNE) casualties and other contingencies; and may be assigned independent of a Medical provider.

**DoD Relationship****Group Title**Medical Care and  
Treatment, General**DoD Code**

130000

**O\*NET Relationship****Occupation Title**

Emergency Medical Technicians

**SOC Code**

29-2042.00

**Job Family**Healthcare Practitioners and  
Technical**Skills***Critical Thinking**Complex Problem Solving**Equipment Selection**Judgment and Decision Making**Management of Material Resources**Operation and Control**Writing**Monitoring**Speaking**Instructing***Abilities***Deductive Reasoning**Manual Dexterity**Information Ordering**Finger Dexterity**Speed of Closure**Problem Sensitivity**Oral Expression**Inductive Reasoning**Reaction Time**Written Expression***ADMINISTRATION****Paygrade****Task Type****Task Statements**

E3	CORE	Advise patients on Health Insurance Portability and Accountability Act (HIPAA)
E3	CORE	Document patient dispositions (e.g., no duty, light duty, full duty, etc.)
E3	CORE	Enforce institutional standards of care by platform (e.g., The Joint Commission (TJC), Medical Inspector General (MEDIG), etc.)
E3	CORE	Manage medical and dental records
E3	CORE	Perform annual verifications of medical and dental records
E3	CORE	Prepare medical and dental reports
E3	CORE	Prepare monthly morbidity reports
E3	CORE	Process consultation forms
E3	CORE	Provide birth certificate data
E3	CORE	Provide death certificate data

**CLINICAL SUPPORT SERVICES****Paygrade****Task Type****Task Statements**

E3	NON-CORE	Assist with clinical imaging
E3	CORE	Assist with walking blood bank (WBB) procedures
E3	CORE	Dispense medications (e.g., mechanical, manual, etc.)

### CLINICAL SUPPORT SERVICES (CONT'D)

<u>Paygrade</u>	<u>Task Type</u>	<u>Task Statements</u>
E3	CORE	Document laboratory test results
E3	CORE	Interpret laboratory test results
E3	CORE	Perform basic laboratory tests (e.g., waived testing, point-of-care testing (POCT), etc.)
E3	CORE	Prepare laboratory test request forms
E3	CORE	Reconstitute medications and vaccines for administration
E3	CORE	Report abnormal laboratory test results
E3	CORE	Verify laboratory test request forms

### EMERGENCY, FIELD, AND OPERATIONAL TREATMENT

<u>Paygrade</u>	<u>Task Type</u>	<u>Task Statements</u>
E3	CORE	Administer intraosseous (IO) infusions (e.g., fluids, medications, etc.)
E3	CORE	Apply occlusive dressings
E3	CORE	Apply patient restraints
E3	CORE	Apply tourniquets
E3	CORE	Assess Chemical, Biological, Radiological, Nuclear, and Explosive (CBRNE) contaminated patients
E3	CORE	Assess cold casualties
E3	CORE	Assess heat casualties
E3	CORE	Assess patients for abdominal injuries
E3	CORE	Assess patients for burns (e.g., thermal, chemical, electrical, light, radiological, etc.)
E3	CORE	Assess patients for cardiovascular (CV) system emergencies
E3	CORE	Assess patients for constitutional emergencies (e.g., high fever)
E3	CORE	Assess patients for dental emergencies
E3	CORE	Assess patients for endocrine system emergencies
E3	NON-CORE	Assess patients for envenomations
E3	CORE	Assess patients for external hemorrhages
E3	CORE	Assess patients for gastrointestinal (GI) system emergencies
E3	CORE	Assess patients for genitourinary (GU) system emergencies
E3	CORE	Assess patients for head, eyes, ears, nose, and throat (HEENT) emergencies
E3	CORE	Assess patients for hematologic system, lymphatic system, and immune system/allergy emergencies (e.g., anaphylaxis)
E3	CORE	Assess patients for human and animal bites
E3	CORE	Assess patients for integumentary system (i.e., dermatologic) emergencies
E3	CORE	Assess patients for internal hemorrhages
E3	CORE	Assess patients for intoxications, poisonings, and hazardous material exposures
E3	CORE	Assess patients for mental health emergencies (e.g., threat to self or others)
E3	CORE	Assess patients for musculoskeletal (MSK) system emergencies
E3	CORE	Assess patients for nervous system emergencies (e.g., traumatic brain injuries (TBI), seizures, etc.)
E3	CORE	Assess patients for respiratory system emergencies
E3	CORE	Assess patients for shock

**EMERGENCY, FIELD, AND OPERATIONAL TREATMENT (CONT'D)**

<b><u>Paygrade</u></b>	<b><u>Task Type</u></b>	<b><u>Task Statements</u></b>
E3	CORE	Assess placements of tourniquets
E3	CORE	Assess scene safety and Situational Awareness (SA)
E3	CORE	Assist triage officers during mass casualty incidents (MCI)
E3	CORE	Assist with childbirth procedures
E3	CORE	Conduct quarantine protocols (e.g., ships, stations, units, personnel, etc.)
E3	CORE	Coordinate medical evacuations (e.g., urgent, priority, routine, etc.)
E3	CORE	Direct personnel in tactical triage procedures
E3	CORE	Document medical and dental emergencies
E3	NON-CORE	Establish chest tube thoracostomies (TT)
E3	CORE	Establish patent airways (e.g., head tilt-chin lift, jaw-thrust, etc.)
E3	CORE	Establish surgical airways (i.e., cricothyrotomies)
E3	CORE	Execute medical evacuations (e.g., urgent, priority, routine, etc.)
E3	CORE	Identify human remains
E3	CORE	Insert airway adjuncts (i.e., oropharyngeal airways (OPA) and nasopharyngeal airways (NPA))
E3	CORE	Insert artificial airways (e.g., endotracheal tubes (ETT), laryngeal mask airways (LMA), etc.)
E3	CORE	Maintain patent airways (e.g., head tilt-chin lift, jaw-thrust, etc.)
E3	CORE	Manage battle dressing stations (BDS)
E3	CORE	Perform blood transfusions
E3	CORE	Perform emergency field diagnostic tests (e.g., halo sign tests, digital rectal exams (DRE), etc.)
E3	CORE	Perform healthcare provider Basic Life Support (BLS)
E3	CORE	Perform needle decompressions
E3	CORE	Perform patient movement techniques (i.e., lifts, carries, and drags)
E3	CORE	Perform tactical triage procedures
E3	CORE	Remove patient restraints
E3	CORE	Remove superficial foreign bodies
E3	CORE	Submit casualty evacuation turnover reports
E3	CORE	Transport patients via patient carrying devices (e.g., litters, stretchers, sleds, stair chairs, etc.)
E3	CORE	Treat Chemical, Biological, Radiological, Nuclear, and Explosive (CBRNE) contaminated patients
E3	CORE	Treat cold casualties
E3	CORE	Treat heat casualties
E3	CORE	Treat patients for burns (e.g., thermal, chemical, electrical, light, radiological, etc.)
E3	CORE	Treat patients for cardiovascular (CV) system emergencies
E3	CORE	Treat patients for constitutional emergencies (e.g., high fever)
E3	CORE	Treat patients for dental emergencies (e.g., dental first aid)
E3	CORE	Treat patients for endocrine system emergencies
E3	NON-CORE	Treat patients for envenomations
E3	CORE	Treat patients for external hemorrhages

### **EMERGENCY, FIELD, AND OPERATIONAL TREATMENT (CONT'D)**

<b><u>Paygrade</u></b>	<b><u>Task Type</u></b>	<b><u>Task Statements</u></b>
E3	CORE	Treat patients for gastrointestinal (GI) system emergencies
E3	CORE	Treat patients for genitourinary (GU) system emergencies
E3	CORE	Treat patients for head, eyes, ears, nose, and throat (HEENT) emergencies
E3	CORE	Treat patients for hematologic system, lymphatic system, and immune system/allergy emergencies (e.g., anaphylaxis)
E3	CORE	Treat patients for human and animal bites
E3	CORE	Treat patients for integumentary system (i.e., dermatologic) emergencies
E3	CORE	Treat patients for internal hemorrhages (e.g., junctional tourniquets, pelvic binders, etc.)
E3	CORE	Treat patients for intoxications, poisonings, and hazardous material exposures
E3	CORE	Treat patients for mental health emergencies (e.g., de-escalate emotionally unstable patients)
E3	CORE	Treat patients for musculoskeletal (MSK) system emergencies
E3	CORE	Treat patients for nervous system emergencies (e.g., traumatic brain injuries (TBI), seizures, etc.)
E3	CORE	Treat patients for respiratory system emergencies
E3	CORE	Treat patients for shock

### **LOGISTICS**

<b><u>Paygrade</u></b>	<b><u>Task Type</u></b>	<b><u>Task Statements</u></b>
E3	CORE	Dispose of medical and dental consumables
E3	CORE	Dispose of medications
E3	CORE	Inspect decontamination stations
E3	CORE	Inspect medical and dental equipment
E3	CORE	Inventory decontamination stations
E3	CORE	Inventory medical and dental equipment and supplies (e.g., authorized medical allowance list (AMAL), authorized dental allowance list (ADAL), medical kits, etc.)
E3	CORE	Manage medical and dental equipment and supplies (e.g., authorized medical allowance list (AMAL), authorized dental allowance list (ADAL), medical kits, etc.)
E3	CORE	Perform preventive maintenance on medical and dental equipment
E3	CORE	Perform user-level repair on medical and dental equipment
E3	CORE	Prepare accident and injury (A&I) reports
E3	CORE	Prepare sick and injured (S&I) reports
E3	CORE	Report corrective maintenance needs for medical and dental equipment
E3	CORE	Stock medical and dental equipment and supplies (e.g., authorized medical allowance list (AMAL), authorized dental allowance list (ADAL), medical kits, etc.)
E3	CORE	Test medical and dental equipment
E3	CORE	Troubleshoot medical and dental equipment

### **PATIENT CARE**

<b><u>Paygrade</u></b>	<b><u>Task Type</u></b>	<b><u>Task Statements</u></b>
E3	CORE	Acquire patient data (e.g., past medical history, history of present illness, etc.)
E3	CORE	Administer buccal medications
E3	CORE	Administer immersion therapies



## **PATIENT CARE (CONT'D)**

<b><u>Paygrade</u></b>	<b><u>Task Type</u></b>	<b><u>Task Statements</u></b>
E3	CORE	Administer inhalation and nebulization medications and therapies
E3	CORE	Administer intradermal (ID) injections and skin tests
E3	CORE	Administer intramuscular (IM) injections
E3	CORE	Administer intravenous (IV) injections
E3	CORE	Administer intravenous (IV) medications and therapies
E3	CORE	Administer local anesthesia
E3	CORE	Administer nasal medications and therapies
E3	CORE	Administer nasogastric (NG) tube, orogastric (OG) tube, gastric (G) tube, and jejunostomy (J) tube medications and therapies
E3	CORE	Administer ocular medications and therapies (i.e., ophthalmic)
E3	CORE	Administer oral medications and therapies
E3	CORE	Administer otic medications and therapies
E3	CORE	Administer rectal medications and therapies
E3	CORE	Administer subcutaneous (SC) injections
E3	CORE	Administer sublingual (SL) medications
E3	CORE	Administer topical medications and therapies
E3	CORE	Administer transdermal medications and therapies
E3	CORE	Administer vaginal medications and therapies
E3	CORE	Advise patients on ethical issues (e.g., pregnancy, informed consent, confidentiality, end of life care, etc.)
E3	CORE	Advocate for patient healthcare needs
E3	CORE	Aid patients in activities of daily living (ADL)
E3	CORE	Analyze patient charts for continuity of care
E3	CORE	Analyze patient data (e.g., past medical history, history of present illness, etc.)
E3	CORE	Apply orthopedic/musculoskeletal (MSK) devices
E3	CORE	Assess airways
E3	CORE	Assess general appearance of patients
E3	CORE	Assess intradermal (ID) skin tests
E3	CORE	Assess objective vital sign trends (i.e., heart rate (HR), respiratory rate (RR), blood pressure (BP), temperature, and oxygen saturation (SpO2))
E3	CORE	Assess patients and medications for contraindications
E3	CORE	Assess patients for constitutional symptoms (e.g., exhaustion, malaise, weight loss, etc.)
E3	CORE	Assess patients for medication and vaccination side effects, adverse events, and interactions
E3	CORE	Assess patients for pain
E3	CORE	Assess patients for side effects and adverse events to treatments and procedures
E3	CORE	Assist in performing incision and drainage (I&D) procedures
E3	CORE	Assist in treating cardiovascular (CV) system abnormalities
E3	CORE	Assist in treating communicable diseases
E3	CORE	Assist in treating endocrine system abnormalities
E3	CORE	Assist in treating gastrointestinal (GI) system abnormalities

### PATIENT CARE (CONT'D)

<u>Paygrade</u>	<u>Task Type</u>	<u>Task Statements</u>
E3	CORE	Assist in treating genitourinary (GU) system abnormalities
E3	CORE	Assist in treating head, eyes, ears, nose, and throat (HEENT) abnormalities
E3	CORE	Assist in treating hematologic system, lymphatic system, and immune system/allergy abnormalities
E3	CORE	Assist in treating integumentary system (i.e., dermatologic) abnormalities
E3	CORE	Assist in treating mental health issues
E3	CORE	Assist in treating musculoskeletal (MSK) system abnormalities
E3	CORE	Assist in treating nervous system abnormalities
E3	CORE	Assist in treating patients for constitutional symptoms (e.g., exhaustion, malaise, weight loss, etc.)
E3	CORE	Assist in treating respiratory system abnormalities
E3	CORE	Assist patients in utilization of durable medical equipment (DME)
E3	CORE	Assist patients with occupational therapy (OT)
E3	CORE	Assist patients with physical therapy (PT)
E3	CORE	Assist with the administration of implanted devices and medications (e.g., birth control)
E3	CORE	Assist with the administration of intrathecal medications
E3	CORE	Assist with the removal of artificial airways (e.g., endotracheal tubes (ETT), laryngeal mask airways (LMA), etc.)
E3	CORE	Calculate medication dosages
E3	CORE	Close wounds with medical adhesives, staples, and dressing materials (e.g., butterfly bandages, wound closure strips, etc.)
E3	CORE	Close wounds with sutures
E3	CORE	Communicate treatment plans to providers
E3	CORE	Coordinate health services appointment requirements fulfillments
E3	CORE	Counsel patients on Privacy Act Statement
E3	CORE	Counsel patients regarding treatment plans
E3	CORE	Create patient care encounters
E3	CORE	Direct personnel in clinical triage procedures
E3	CORE	Discontinue (DC) intravenous (IV) catheters
E3	CORE	Document intradermal (ID) skin test results
E3	CORE	Document patient care
E3	CORE	Document physical examinations
E3	CORE	Draft treatment plans
E3	CORE	Educate patients on prescribed diets
E3	CORE	Educate patients on proper use of durable medical equipment (DME)
E3	CORE	Insert intravenous (IV) catheters
E3	CORE	Insert nasogastric (NG) tubes and orogastric (OG) tubes
E3	CORE	Insert non-surgical urinary catheters
E3	CORE	Isolate infectious patients
E3	CORE	Maintain artificial airways (e.g., endotracheal tubes (ETT), laryngeal mask airways (LMA), etc.)

### PATIENT CARE (CONT'D)

<u>Paygrade</u>	<u>Task Type</u>	<u>Task Statements</u>
E3	CORE	Maintain intravenous (IV) medication and therapy administrations and accesses (e.g., saline locks, site inspections, etc.)
E3	CORE	Maintain patient privacy
E3	CORE	Maintain sterile fields
E3	CORE	Maintain surgical and non-surgical urinary catheters
E3	CORE	Manage fluid intake
E3	CORE	Manage patient diet compliance
E3	CORE	Monitor fluid output
E3	CORE	Obtain laboratory test samples (e.g., urine samples, nasal swabs, etc.) and specimens (e.g., finger stick and venipuncture blood specimens)
E3	CORE	Obtain objective vital sign values (i.e., heart rate (HR), respiratory rate (RR), blood pressure (BP), temperature, and oxygen saturation (SpO2))
E3	CORE	Participate in patient rounds
E3	CORE	Perform cardiovascular (CV) system assessments
E3	CORE	Perform clinical triage procedures
E3	CORE	Perform communicable disease assessments
E3	CORE	Perform endocrine system assessments
E3	CORE	Perform gastrointestinal (GI) system assessments
E3	CORE	Perform genitourinary (GU) system assessments
E3	CORE	Perform gross hearing acuity tests
E3	CORE	Perform head, eyes, ears, nose, and throat (HEENT) assessments
E3	CORE	Perform hematologic system, lymphatic system, and immune system/allergy assessments
E3	CORE	Perform integumentary system (i.e., dermatologic) assessments
E3	CORE	Perform medication reconciliations
E3	CORE	Perform mental health assessments
E3	CORE	Perform musculoskeletal (MSK) system assessments
E3	CORE	Perform nervous system assessments
E3	CORE	Perform patient turnovers
E3	CORE	Perform physical examinations
E3	CORE	Perform post-operative care
E3	CORE	Perform pre-operative procedures
E3	CORE	Perform respiratory system assessments
E3	CORE	Perform wound inspections (e.g., infections, healing signs, etc.)
E3	CORE	Perform wound management (e.g., dressing changes, irrigation, cleaning, etc.)
E3	CORE	Prepare hospital beds
E3	CORE	Prepare patients for transport
E3	CORE	Provide discharge instructions to patients
E3	CORE	Provide healthcare-related customer service (e.g., service best practices, effective communication, problem resolutions, etc.)
E3	CORE	Remove airway adjuncts (i.e., oropharyngeal airways (OPA) and nasopharyngeal airways (NPA))

### PATIENT CARE (CONT'D)

<u>Paygrade</u>	<u>Task Type</u>	<u>Task Statements</u>
E3	CORE	Remove nasogastric (NG) tubes and orogastric (OG) tubes
E3	CORE	Remove non-surgical urinary catheters
E3	CORE	Remove orthopedic/musculoskeletal (MSK) devices
E3	CORE	Remove sutures and staples
E3	CORE	Report objective vital sign values (i.e., heart rate (HR), respiratory rate (RR), blood pressure (BP), temperature, and oxygen saturation (SpO2))
E3	CORE	Report side effects and adverse events to medications and vaccinations
E3	CORE	Report side effects and adverse events to treatments and procedures
E3	CORE	Schedule health services appointments
E3	CORE	Set up electrocardiogram (ECG/EKG) equipment
E3	CORE	Set up humidifiers
E3	CORE	Set up oxygen equipment
E3	CORE	Set up patient monitors
E3	CORE	Set up sterile fields
E3	CORE	Set up suction equipment
E3	CORE	Set up vaporizers
E3	CORE	Set up ventilators
E3	CORE	Suction artificial airways (e.g., endotracheal tubes (ETT), laryngeal mask airways (LMA), etc.)
E3	CORE	Suction natural airways
E3	CORE	Suction oral cavities
E3	CORE	Translate medical terminology for patients
E3	CORE	Treat non-emergent oral conditions
E3	CORE	Treat patients for pain
E3	CORE	Verify specimen and sample labels

### PREVENTIVE AND OCCUPATIONAL MEDICINE

<u>Paygrade</u>	<u>Task Type</u>	<u>Task Statements</u>
E3	CORE	Analyze dental readiness data
E3	CORE	Analyze medical readiness data
E3	CORE	Assist others in donning and doffing surgical gowns and gloves
E3	CORE	Brief medical and dental readiness
E3	CORE	Clean sterilizers and sanitizers
E3	CORE	Collect regulated medical waste
E3	CORE	Conduct health promotions education
E3	CORE	Conduct preliminary interviews of personnel exposed to communicable diseases
E3	CORE	Disinfect medical and dental equipment and instruments
E3	CORE	Disinfect treatment rooms
E3	CORE	Dispose of regulated medical waste
E3	CORE	Document disposal of regulated medical waste
E3	CORE	Doff sterile surgical gowns and gloves
E3	CORE	Don sterile surgical gowns and gloves

**PREVENTIVE AND OCCUPATIONAL MEDICINE (CONT'D)**

<u>Paygrade</u>	<u>Task Type</u>	<u>Task Statements</u>
E3	CORE	Draft command medical and dental readiness plans
E3	CORE	Enforce sharps safe handling precautions
E3	CORE	Fit Personal Protective Equipment (PPE) (e.g., hearing protection devices) and occupational health equipment (e.g., respirators)
E3	CORE	Inspect food service personnel (e.g., Culinary Specialists (CS), Food Service Attendants (FSA), etc.) for personal hygiene
E3	CORE	Inspect food service personnel (e.g., Culinary Specialists (CS), Food Service Attendants (FSA), etc.) for proper food handling procedures
E3	CORE	Inspect food storage and service areas
E3	NON-CORE	Inspect messing and food service facilities
E3	CORE	Interpret water test results
E3	CORE	Issue Personal Protective Equipment (PPE) (e.g., hearing protection devices) and occupational health equipment (e.g., respirators)
E3	CORE	Maintain non-surgical universal precautions
E3	CORE	Maintain surgical universal precautions
E3	CORE	Organize medical workspace areas to prevent injuries
E3	CORE	Package regulated medical waste
E3	NON-CORE	Perform audiogram tests
E3	CORE	Perform heat stress monitoring procedures
E3	CORE	Perform pest surveillance
E3	CORE	Perform preliminary investigations of foodborne illnesses
E3	CORE	Perform refrigerator and freezer temperature checks
E3	CORE	Perform standard vision tests (e.g., acuity, color, depth, etc.)
E3	CORE	Prepare heat and cold casualty reports
E3	CORE	Prepare medical and dental equipment and instruments for sterilization
E3	CORE	Process regulated medical waste
E3	CORE	Provide medical recommendations for camp layouts
E3	CORE	Record sterilization data
E3	CORE	Report water test results
E3	CORE	Sort regulated medical waste
E3	NON-CORE	Sterilize medical and dental equipment and instruments
E3	CORE	Submit heat and cold casualty reports
E3	CORE	Test water for bacteria
E3	CORE	Test water for halogen residuals
E3	CORE	Transport regulated medical waste
E3	CORE	Update dental readiness data
E3	CORE	Update medical readiness data

**TRAINING**

<u>Paygrade</u>	<u>Task Type</u>	<u>Task Statements</u>
E3	CORE	Conduct medical and dental training
E3	CORE	Maintain departmental training jackets

**TRAINING (CONT'D)**

<b><u>Paygrade</u></b>	<b><u>Task Type</u></b>	<b><u>Task Statements</u></b>
E3	CORE	Train personnel on Basic Life Support (BLS) subjects
E3	CORE	Train personnel on Tactical Combat Casualty Care (TCCC) subjects