

CHAPTER 49



MASTER-AT-ARMS (MA)

NAVPERS 18068F-49E
Change 86

Updated: April 2021

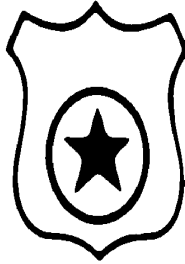
TABLE OF CONTENTS

SCOPE OF RATING	MA-3
GENERAL INFORMATION	MA-4
INSTALLATION SECURITY SPECIALIST	MA-5
ADMINISTRATION	MA-5
ANTITERRORISM (AT)	MA-6
LAW ENFORCEMENT	MA-10
NSF TRAINING	MA-11
PHYSICAL SECURITY	MA-12
AFLOAT SECURITY SPECIALIST	MA-13
ADMINISTRATION	MA-13
ANTITERRORISM (AT)	MA-14
LAW ENFORCEMENT	MA-16
NSF TRAINING	MA-18
PHYSICAL SECURITY	MA-18
NAVAL CRIMINAL INVESTIGATIVE SERVICE OPERATIONS SPECIALIST	MA-19
ADMINISTRATION	MA-19
ANTITERRORISM (AT)	MA-20
LAW ENFORCEMENT	MA-22
NSF TRAINING	MA-22
PHYSICAL SECURITY	MA-22
EXPEDITIONARY SECURITY SPECIALIST	MA-24
ADMINISTRATION	MA-24
ANTITERRORISM (AT)	MA-25
LAW ENFORCEMENT	MA-28
NSF TRAINING	MA-29
PHYSICAL SECURITY	MA-29
STRATEGIC ASSET SECURITY SPECIALIST	MA-30
ADMINISTRATION	MA-30
ANTITERRORISM (AT)	MA-31
LAW ENFORCEMENT	MA-34
NSF TRAINING	MA-35
PHYSICAL SECURITY	MA-35
NAVAL SECURITY FORCE TRAINER/PLANNER	MA-36
ADMINISTRATION	MA-36
ANTITERRORISM (AT)	MA-36
LAW ENFORCEMENT	MA-37
NSF TRAINING	MA-37

NAVY ENLISTED OCCUPATIONAL STANDARDS

FOR

MASTER-AT-ARMS (MA)



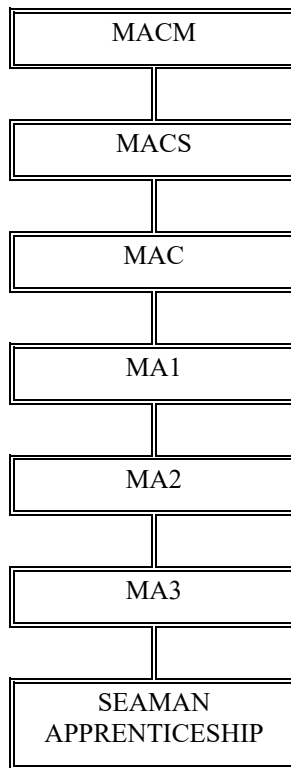
SCOPE OF RATING

Master-at-Arms (MA) will, individually or as part of a force, conduct Force Protection (FP) operations in order to defeat threats at-sea, on-shore, and in expeditionary environments. Force Protection (FP) is a program that is comprised of three pillars: Antiterrorism (AT), physical security, and law enforcement. Specifically, the MA will conduct scalable Force Protection (FP) and security providing layered defense for designated assets and critical infrastructure throughout the world. Additionally, MA will operate in an integrated sea/coastal/landward security environment providing mobile and fixed defensive operations while organizing and training their personnel in Antiterrorism (AT), physical security, law enforcement, and weapons proficiency. These tasks are in support of Commanders performing base defense, expeditionary/combat operations, strategic asset security, law enforcement, corrections, and special events and operations with other services, host nation partners, and civil authorities.

These Occupational Standards are to be incorporated in Volume I, Part B, of the Manual of Navy Enlisted Manpower and Personnel Classifications and Occupational Standards (NAVPERS 18068F) as Chapter 49.

GENERAL INFORMATION

CAREER PATTERN



Normal path of advancement to Chief Warrant Officer and Limited Duty Officer categories can be found in OPNAVINST 1420.1.

For rating entry requirements, refer to MILPERSMAN articles 1306-618 and 1440-010.

SAFETY

The observance of Operational Risk Management (ORM) and proper safety precautions in all areas is an integral part of each billet and the responsibility of every Sailor; therefore, it is a universal requirement for all ratings.

Job Title**Installation Security Specialist****Job Code****001487****Job Family**

Protective Service

NOC

TBD

Short Title (30 Characters)

INSTALLATION SECURITY SPEC

Short Title (14 Characters)

INST SEC SPEC

Pay Plan

Enlisted

Career Field

MA

Other Relationships and Rules

NEC P02A, P03A, P04A, P05A, P06A, P08A, P11A, P12A, P13A, 718B, 804A, 853A or other NECs as assigned

Job Description

Installation Security Specialists are specially trained and equipped personnel who maintain readiness to deter, detect, defend, and defeat criminal terrorist activities while supporting good order and discipline, assimilating local laws, and operating in a safe environment. This includes protecting resources, facilities, mission critical assets, critical infrastructure, and personnel including family members and civilians when applicable. Provides access control consistent with directives and current threat, risk, vulnerability, criticality, assigned roles, missions and resources in support of installation and regional commanders.

DoD Relationship**Group Title**

Police

DoD Code

270800

O*NET Relationship**Occupation Title**

Police and Sheriffs Patrol Officers

SOC Code

33-3051.00

Job Family

Protective Service

Skills*Coordination**Critical Thinking**Monitoring**Management of Material Resources**Writing**Speaking**Operation and Control**Systems Evaluation**Reading Comprehension**Equipment Selection***Abilities***Selective Attention**Oral Expression**Visualization**Spatial Orientation**Deductive Reasoning**Written Comprehension**Information Ordering**Written Expression**Reaction Time**Inductive Reasoning***ADMINISTRATION****Paygrade****Task Type****Task Statements**

E7

NON-CORE

Administer Department of the Navy (DON) officer field evaluation report

E7

CORE

Approve Naval Security Force (NSF) watch bills

E7

CORE

Approve post orders

E7

CORE

Approve security reports and documents (e.g., incident reports, desk journals, communications log, Law Enforcement (LE) documents, physical security documents, etc.)

E5

NON-CORE

Brief security officer for Military Working Dog (MWD) operations

E4

NON-CORE

Complete Military Working Dog (MWD) required reports and forms (e.g., training records, utilization records, certification data, etc.)

E4

CORE

Complete Operational Risk Management (ORM) assessments for Harbor Patrol Unit (HPU) operations

E5

CORE

Conduct case and file management

E4

CORE

Conduct inventories (i.e., Military Working Dog (MWD), Harbor Patrol Unit (HPU), SWF, VQ, CNIC, etc.)

E4

CORE

Conduct kennel checks

E7

CORE

Conduct post requirements and manning assessments

E7

NON-CORE

Conduct pre-mission planning

E5

CORE

Conduct security briefs and debriefs

ADMINISTRATION (CONT'D)

<u>Paygrade</u>	<u>Task Type</u>	<u>Task Statements</u>
E4	CORE	Create security reports and documents (e.g., incident reports, desk journals, communications logs, Law Enforcement (LE) documents, physical security documents, etc.)
E4	CORE	Develop access lists and rosters
E5	CORE	Develop communications plans
E5	CORE	Develop loss prevention plans and procedures
E6	CORE	Develop Navy Security Force (NSF) policies and guidance
E6	CORE	Develop Pre-Planned Responses (PPR)/Standard Operating Procedures (SOP)
E5	CORE	Develop program waivers and exceptions to policies
E6	CORE	Develop security force post orders
E5	CORE	Draft Naval Security Force (NSF) watch bills
E6	NON-CORE	Manage accountability of Military Working Dog (MWD) explosive training aids
E7	CORE	Manage case and file management
E5	NON-CORE	Manage drug training programs for Military Working Dog (MWD) program
E6	CORE	Manage evidence program
E6	NON-CORE	Manage explosive training programs for Military Working Dog (MWD) program
E5	NON-CORE	Manage Military Working Dog (MWD) training
E7	CORE	Manage Naval Security Force (NSF) reserve unit
E7	CORE	Manage post orders program
E7	NON-CORE	Manage regional Military Working Dog (MWD) special tasking assignments
E7	CORE	Manage Standard Operating Procedure (SOP) program
E7	CORE	Manage watch standers (e.g., Navy Security Force (NSF), Auxiliary Security Force (ASF), In-Port Security Force (ISF), etc.)
E5	CORE	Perform analysis of crime statistics
E5	CORE	Perform post inspections
E5	CORE	Perform shift rotation and passdown
E4	CORE	Perform Victim and Witness Assistance Program (VWAP) procedures
E5	CORE	Relieve Naval Security Force (NSF) personnel from duty
E6	CORE	Resolve citizen complaints
E7	CORE	Review Antiterrorism (AT) risk assessments
E5	NON-CORE	Review Military Working Dog (MWD) required reports and forms (e.g., training records, utilization records, certification data, etc.)
E7	CORE	Review physical security plan
E6	CORE	Review security reports and documents (e.g., incident reports, desk journals, communications logs, Law Enforcement (LE) documents, physical security documents, etc.)
E7	CORE	Review vulnerability assessment

ANTITERRORISM (AT)

<u>Paygrade</u>	<u>Task Type</u>	<u>Task Statements</u>
E6	CORE	Activate Emergency Operations Centers (EOC)

ANTITERRORISM (AT) (CONT'D)

<u>Paygrade</u>	<u>Task Type</u>	<u>Task Statements</u>
E6	CORE	Activate Emergency Operations Centers (EOC)
E4	CORE	Administer first aid (i.e., basic life support, Automated External Defibrillator (AED) procedures, Tactical Combat Casualty Care (TCCC), etc.)
E5	CORE	Advise forces on implementation of the Standing Rules for the Use of Force (SRUF)
E4	CORE	Apply restraint devices
E4	CORE	Apply use of force continuum
E7	NON-CORE	Brief Commander and Antiterrorism (AT) board on Force Protection Conditions (FPCON) changes
E7	NON-CORE	Chair Antiterrorism Working Group (ATWG)
E4	CORE	Check in personally assigned weapons and equipment
E4	CORE	Check out personally assigned weapons and equipment
E4	NON-CORE	Combat small vessel casualties (e.g., fire, flooding, electrical, etc.)
E4	CORE	Complete weapons qualifications (e.g., small arms, Crew Served Weapons (CSW), Non-Lethal Weapons (NLW), etc.)
E5	CORE	Conduct Antiterrorism (AT) risk assessments
E4	NON-CORE	Conduct approach and visit boardings
E4	NON-CORE	Conduct command Military Working Dog (MWD) detection certification
E4	CORE	Conduct contraband or access inspections (i.e., vehicle, craft, personnel, baggage, etc.)
E4	NON-CORE	Conduct craft towing
E4	NON-CORE	Conduct daily boat reports
E5	CORE	Conduct guardmount
E4	NON-CORE	Conduct Military Working Dog (MWD) sweeps as requested
E5	NON-CORE	Conduct multiple boat formations
E4	CORE	Conduct patrols
E4	CORE	Conduct post turnovers
E4	CORE	Conduct radio communications
E4	NON-CORE	Conduct sanitation duties for Military Working Dog (MWD) kennels (e.g., cleaning, feeding, medication, etc.)
E4	NON-CORE	Conduct search and rescue operations
E4	NON-CORE	Conduct Seaward Continuum of Force (SCOF)
E4	CORE	Conduct security escorts and transports
E4	CORE	Conduct Size, Activity, Location, Unit, Time, and Equipment (SALUTE) reports (e.g., radio, landline, and digital communications)
E4	CORE	Conduct surveillance detection
E4	CORE	Conduct tactical entries
E4	CORE	Conduct Tactical Evacuations (TACEVAC)
E4	CORE	Conduct tactical movements
E4	CORE	Conduct traffic control
E4	NON-CORE	Conduct waterborne barrier operations
E6	NON-CORE	Control multiple vessels in mission execution

ANTITERRORISM (AT) (CONT'D)

<u>Paygrade</u>	<u>Task Type</u>	<u>Task Statements</u>
E4	CORE	Control security lighting equipment
E5	CORE	Coordinate inter-agency responses
E5	NON-CORE	Correct charts from notice to mariners
E4	CORE	Detain personnel
E4	CORE	Detect Improvised Explosive Devices (IED)
E6	CORE	Develop Antiterrorism (AT) plans
E6	CORE	Develop barrier plans
E6	CORE	Develop Force Protection Conditions (FPCON) measures action matrix
E7	CORE	Direct Force Protection Conditions (FPCON) measures, actions, and changes
E4	CORE	Direct Reactionary Force (RF) members to fields of fire
E4	CORE	Doff Chemical, Biological, Radiological, Nuclear, and Explosive (CBRNE) Personal Protective Equipment (PPE)
E4	CORE	Don Chemical, Biological, Radiological, Nuclear, and Explosive (CBRNE) Personal Protective Equipment (PPE)
E5	CORE	Draft messages (i.e., Antiterrorism (AT) operational report, etc.)
E4	NON-CORE	Employ Military Working Dog (MWD)
E4	CORE	Employ unambiguous warning devices (i.e., horns, sirens, lights, flares, etc.)
E5	CORE	Establish Incident Command Post
E4	CORE	Establish Navy Security Force (NSF) perimeters areas
E4	CORE	Evacuate personnel casualties from vessels
E5	NON-CORE	Evaluate Military Working Dog (MWD) performance
E7	NON-CORE	Evaluate need for modification to Antiterrorism (AT) posture
E5	CORE	Execute duties as on-scene commander
E5	CORE	Execute multiple asset protection missions
E4	CORE	Execute unit barrier plans
E7	NON-CORE	Implement unit barrier plans
E4	CORE	Inspect Chemical, Biological, Radiological, Nuclear, and Explosive (CBRNE) Personal Protective Equipment (PPE)
E4	NON-CORE	Layout Plan of Intended Movement (PIM) on charts
E4	CORE	Lead Reactionary Force (RF) Team in tactical movements
E4	CORE	Maintain weapons and equipment (e.g. small arms, Crew Served Weapons (CSW), Non-Lethal Weapons (NLW), Civil Engineering Support Equipment (CESE), weapons mounts, etc.)
E4	CORE	Make description of a person, vehicle, watercraft, or aircraft
E7	NON-CORE	Manage Antiterrorism (AT) programs
E7	CORE	Manage Antiterrorism Tactical Watch Officer (ATTWO) program
E7	NON-CORE	Manage Antiterrorism Training Team (ATTT)
E7	CORE	Manage communications plans
E7	CORE	Manage harbor security program
E5	NON-CORE	Manage Military Working Dog (MWD) teams
E6	CORE	Manage security force operations

ANTITERRORISM (AT) (CONT'D)

<u>Paygrade</u>	<u>Task Type</u>	<u>Task Statements</u>
E7	CORE	Manage security personnel and resources in the Emergency Operation Center (EOC)
E7	CORE	Manage Threat Working Groups (TWG)
E4	NON-CORE	Moor vessels
E4	CORE	Neutralize active shooter threats
E4	CORE	Operate Crew Served Weapons (CSW)
E4	NON-CORE	Operate Harbor Security Boat (HSB) electronic equipment
E4	CORE	Operate night vision optical devices
E4	CORE	Operate Non-Lethal Weapons (NLW)
E4	CORE	Operate small arms
E5	NON-CORE	Order destructive fire
E4	NON-CORE	Perform afloat navigation (i.e., chart reading, aids to navigation, electronic navigation)
E4	NON-CORE	Perform anchoring
E4	CORE	Perform biometric data collection
E4	CORE	Perform blood borne pathogens prevention procedures
E4	CORE	Perform building and facility security checks
E4	CORE	Perform clearing barrel procedures (i.e., uploading/downloading weapons)
E6	CORE	Perform Command and Control (C2) functions
E4	NON-CORE	Perform Contact of Interest (COI) intercept techniques (shadowing and herding)
E4	NON-CORE	Perform craft launches and recoveries
E4	CORE	Perform Crew Served Weapons (CSW) turnovers
E4	CORE	Perform equipment pre/post operational checks (i.e., vehicle, craft, night vision devices, etc.)
E4	NON-CORE	Perform first aid to Military Working Dogs (MWD)
E4	CORE	Perform Naval Security Force (NSF) sustainment training
E4	CORE	Perform restraint procedures (e.g., control holds, handcuffing, takedowns, etc.)
E4	NON-CORE	Perform safety checks of Military Working Dog (MWD) equipment
E4	NON-CORE	Perform screen and reaction vessel duties (e.g., response, High Value Asset (HVA) protection, etc.)
E4	CORE	Perform self and equipment decontamination
E4	CORE	Perform tactical team operations
E4	CORE	Perform unarmed blocking techniques, striking techniques, and self-defense movements
E4	CORE	Perform verbal de-escalation procedures
E4	CORE	Perform weapons retention (pistol/rifle)
E4	NON-CORE	Pilot Navy Security Forces (NSF) vessels
E6	CORE	Plan multiple asset protection missions
E4	NON-CORE	Prepare Operational Risk Management (ORM) for underway operations
E4	NON-CORE	Prepare vessels for airlift
E5	CORE	Provide supervision of fixed and mobile posts
E4	NON-CORE	Pull alongside static vessels or vessels making way
E4	CORE	Report Contacts of Interest (COI)

ANTITERRORISM (AT) (CONT'D)

<u>Paygrade</u>	<u>Task Type</u>	<u>Task Statements</u>
E4	CORE	Respond to external and internal threats
E7	CORE	Review criticality assessments
E6	NON-CORE	Review patrol orders
E4	CORE	Supervise clearing barrel procedures (i.e., uploading/downloading weapons)
E5	CORE	Supervise contraband or access inspections (i.e., vehicle, craft, personnel, baggage, etc.)
E5	CORE	Supervise equipment issue and operational checks
E5	NON-CORE	Supervise fueling operations (i.e., small vessel, Civil Engineering Support Equipment (CESE) equipment)
E6	NON-CORE	Supervise navigational track
E4	CORE	Supervise security post turnovers
E5	CORE	Supervise the implementation of Pre-Planned Responses (PPRs)
E5	NON-CORE	Supervise vessel launch and recovery
E5	NON-CORE	Troubleshoot engineering issues

LAW ENFORCEMENT

<u>Paygrade</u>	<u>Task Type</u>	<u>Task Statements</u>
E4	NON-CORE	Administer breathalyzer tests
E4	CORE	Administer Standardized Field Sobriety Tests (SFST)
E4	CORE	Advise suspects of acknowledgement and waiver of rights
E4	CORE	Apprehend military suspects
E4	CORE	Collect evidence and contraband
E5	NON-CORE	Complete prisoner/detainee meal counts and issuance
E4	CORE	Conduct arrestee transports
E4	NON-CORE	Conduct command Military Working Dog (MWD) patrol certification
E4	NON-CORE	Conduct contraband inspections of prisoner/detainee cell and common areas
E5	NON-CORE	Conduct criminal investigations
E4	CORE	Conduct interrogations
E4	CORE	Conduct interviews
E4	CORE	Conduct preliminary investigations
E4	NON-CORE	Conduct prisoner/detainee cell extractions
E4	CORE	Conduct prisoner/detainee escorts and transports
E5	NON-CORE	Conduct subject lineups
E4	CORE	Conduct subject turnovers
E4	CORE	Conduct suspect pursuits (i.e., vehicle, vessel, foot)
E4	CORE	Conduct traffic accident investigations
E4	CORE	Conduct vehicle stops (i.e., traffic violations)
E4	CORE	Conduct vehicle suspect extractions
E4	CORE	Employ Navy Security Force (NSF) case management system (e.g., Consolidated Law Enforcement Operation Center (CLEOC))
E4	CORE	Execute warrants

LAW ENFORCEMENT (CONT'D)

<u>Paygrade</u>	<u>Task Type</u>	<u>Task Statements</u>
E4	CORE	Issue traffic and criminal violation notices
E5	NON-CORE	Lead prisoner physical fitness training program
E5	CORE	Lead response to a civil disturbance
E6	NON-CORE	Manage corrections and detainee unit programs
E7	CORE	Manage criminal investigations
E7	NON-CORE	Manage prisoner/detainee movements within facility
E5	NON-CORE	Monitor prisoner/detainee movements outside of the facility
E4	CORE	Operate emergency vehicles
E4	NON-CORE	Operate vehicle speed measuring equipment
E5	CORE	Perform counterintelligence and criminal activity reporting
E4	CORE	Perform Criminal Justice (CJ) reporting procedures
E4	CORE	Perform Driving Under the Influence or Driving While Intoxicated (DUI or DWI) detection and checkpoint procedures
E4	CORE	Perform initial crime scene response procedures (i.e., access control points)
E5	CORE	Perform police section mentoring and police supervision
E4	NON-CORE	Perform prisoner/detainee control center functions
E4	NON-CORE	Perform prisoner/detainee head counts
E4	NON-CORE	Perform prisoner/detainee riot or crowd control procedures
E4	CORE	Perform searches (e.g., personnel, vehicle, vessel, facility, etc.)
E5	NON-CORE	Perform surveillance operations
E4	CORE	Perform vehicle impoundment procedures
E4	CORE	Preserve crime scenes
E4	CORE	Process evidence and contraband
E4	NON-CORE	Process prisoners/detainees for confinement/detention and release
E4	CORE	Provide testimonies for official proceedings
E4	CORE	Respond to civil disturbances
E4	CORE	Respond to service calls (e.g., accidents, break-ins, suspicious activity, etc.)
E6	NON-CORE	Supervise contraband inspections of prisoner/detainee cell and common areas
E6	NON-CORE	Supervise control center operations
E5	CORE	Supervise evidence processing
E6	NON-CORE	Supervise forced cell extractions
E6	NON-CORE	Supervise prisoner/detainee head counts
E6	NON-CORE	Supervise prisoner/detainee meal counts and issuance
E5	NON-CORE	Supervise prisoner/detainee movements and activities
E6	NON-CORE	Supervise prisoner/detainee riot or crowd control procedures
E5	CORE	Supervise searches (e.g., personnel, vehicle, vessel, facility, etc.)

NSF TRAINING

<u>Paygrade</u>	<u>Task Type</u>	<u>Task Statements</u>
E7	CORE	Manage qualification programs

PHYSICAL SECURITY

<u>Paygrade</u>	<u>Task Type</u>	<u>Task Statements</u>
E5	CORE	Conduct criticality assessments
E4	CORE	Conduct perimeter inspections
E5	CORE	Conduct physical security surveys
E5	CORE	Conduct vulnerability assessment
E5	CORE	Develop physical security plans
E5	CORE	Establish entry control points
E4	CORE	Implement use of compensatory security measures
E4	CORE	Operate Electronic Security System (ESS) Equipment (i.e., video, intrusion detection, proximity, etc.)
E4	CORE	Operate screening and detection equipment (i.e., x-ray machine, undercarriage camera, etc.)
E5	CORE	Perform core, padlock, lock rotations, and combination changes
E5	CORE	Perform crime prevention surveys
E4	CORE	Perform lock and seal inspections
E4	CORE	Perform lost/broken key and lock procedures
E4	CORE	Perform residential and commercial lockout procedures
E5	CORE	Plan static/mobile Mission Essential Vulnerable Assets (MEVA) or High Value Assets (HVA) mission
E4	CORE	Protect static/mobile Mission Essential Vulnerable Assets (MEVA) or High Value Assets (HVA)
E5	CORE	Supervise static/mobile Mission Essential Vulnerable Assets (MEVA) or High Value Assets (HVA) mission
E4	CORE	Verify access control
E4	CORE	Verify identification credentials and documents
E4	CORE	Verify lockout credentials and authorizations procedures

Job Title**Afloat Security Specialist****Job Code****001492****Job Family**

Protective Service

NOC

TBD

Short Title (30 Characters)

AFLOAT SECURITY SPECIALIST

Short Title (14 Characters)

AFLOAT SEC SPC

Pay Plan

Enlisted

Career Field

MA

Other Relationships and Rules

NEC P02A, P08A, P11A, P12A, P13A, 717B, 718B, 804A or other NECs as assigned

Job Description

Afloat Security Specialists conduct operations and maintain readiness to deter, detect, defend, and defeat criminal and terrorist activities maintaining good order and discipline as well as a safe operating environment while protecting life, property, and information as a member of a Shipboard Security Department or as an Independent Duty Master-at-Arms (IDMA) assigned to a ship.

DoD Relationship**Group Title**

Police

DoD Code

270800

O*NET Relationship**Occupation Title**

Police and Sheriff's Patrol Officers

SOC Code

33-3051.00

Job Family

Protective Service

Skills

Coordination

Critical Thinking

Monitoring

Speaking

Management of Material Resources

Writing

Systems Evaluation

Operation and Control

Reading Comprehension

Management of Personnel Resources

Abilities

Selective Attention

Visualization

Oral Expression

Written Comprehension

Deductive Reasoning

Information Ordering

Spatial Orientation

Written Expression

Reaction Time

Inductive Reasoning

ADMINISTRATION**Paygrade****Task Type****Task Statements**

E7

CORE

Approve Naval Security Force (NSF) watch bills

E7

CORE

Approve post orders

E7

CORE

Approve security reports and documents (e.g., incident reports, desk journals, communications log, Law Enforcement (LE) documents, physical security documents, etc.)

E5

CORE

Conduct case and file management

E4

CORE

Conduct inventories (i.e., Military Working Dog (MWD), Harbor Patrol Unit (HPU), SWF, VQ, CNIC, etc.)

E7

CORE

Conduct post requirements and manning assessments

E5

CORE

Conduct security briefs and debriefs

E4

CORE

Create security reports and documents (e.g., incident reports, desk journals, communications logs, Law Enforcement (LE) documents, physical security documents, etc.)

E4

CORE

Develop access lists and rosters

E5

CORE

Develop communications plans

E5

CORE

Develop loss prevention plans and procedures

E6

CORE

Develop Navy Security Force (NSF) policies and guidance

E6

CORE

Develop Pre-Planned Responses (PPR)/Standard Operating Procedures (SOP)

E5

CORE

Develop program waivers and exceptions to policies

E6

CORE

Develop security force post orders

E5

CORE

Draft Naval Security Force (NSF) watch bills

ADMINISTRATION (CONT'D)

<u>Paygrade</u>	<u>Task Type</u>	<u>Task Statements</u>
E7	CORE	Manage case and file management
E6	NON-CORE	Manage customs program
E6	CORE	Manage evidence program
E7	CORE	Manage post orders program
E7	CORE	Manage Standard Operating Procedure (SOP) program
E7	CORE	Manage watch standers (e.g., Navy Security Force (NSF), Auxiliary Security Force (ASF), In-Port Security Force (ISF), etc.)
E5	CORE	Perform analysis of crime statistics
E6	CORE	Perform burial-at-sea ceremony
E5	CORE	Perform post inspections
E5	CORE	Perform shift rotation and passdown
E4	CORE	Perform Victim and Witness Assistance Program (VWAP) procedures
E5	CORE	Relieve Naval Security Force (NSF) personnel from duty
E7	CORE	Review Antiterrorism (AT) risk assessments
E7	CORE	Review physical security plan
E6	CORE	Review security reports and documents (e.g., incident reports, desk journals, communications logs, Law Enforcement (LE) documents, physical security documents, etc.)
E7	CORE	Review vulnerability assessment
E4	NON-CORE	Supervise restricted, extra duty, and Restriction in Lieu of Arrest (RILA) personnel

ANTITERRORISM (AT)

<u>Paygrade</u>	<u>Task Type</u>	<u>Task Statements</u>
E4	CORE	Administer first aid (i.e., basic life support, Automated External Defibrillator (AED) procedures, Tactical Combat Casualty Care (TCCC), etc.)
E5	CORE	Advise forces on implementation of the Standing Rules for the Use of Force (SRUF)
E4	CORE	Apply restraint devices
E4	CORE	Apply use of force continuum
E7	NON-CORE	Brief Commander and Antiterrorism (AT) board on Force Protection Conditions (FPCON) changes
E4	CORE	Check in personally assigned weapons and equipment
E4	CORE	Check out personally assigned weapons and equipment
E4	CORE	Complete weapons qualifications (e.g., small arms, Crew Served Weapons (CSW), Non-Lethal Weapons (NLW), etc.)
E5	CORE	Conduct Antiterrorism (AT) risk assessments
E4	NON-CORE	Conduct approach and visit boardings
E4	CORE	Conduct contraband or access inspections (i.e., vehicle, craft, personnel, baggage, etc.)
E5	CORE	Conduct guardmount
E4	CORE	Conduct patrols
E4	CORE	Conduct post turnovers
E4	CORE	Conduct radio communications
E4	NON-CORE	Conduct Seaward Continuum of Force (SCOF)

ANTITERRORISM (AT) (CONT'D)

<u>Paygrade</u>	<u>Task Type</u>	<u>Task Statements</u>
E4	CORE	Conduct security escorts and transports
E4	CORE	Conduct Size, Activity, Location, Unit, Time, and Equipment (SALUTE) reports (e.g., radio, landline, and digital communications)
E4	CORE	Conduct surveillance detection
E4	CORE	Conduct tactical entries
E4	CORE	Conduct Tactical Evacuations (TACEVAC)
E4	CORE	Conduct tactical movements
E4	CORE	Conduct traffic control
E4	CORE	Control security lighting equipment
E5	CORE	Coordinate inter-agency responses
E4	CORE	Detain personnel
E4	CORE	Detect Improvised Explosive Devices (IED)
E6	CORE	Develop barrier plans
E6	CORE	Develop Force Protection Conditions (FPCON) measures action matrix
E7	CORE	Direct Force Protection Conditions (FPCON) measures, actions, and changes
E4	CORE	Direct Reactionary Force (RF) members to fields of fire
E4	CORE	Don Chemical, Biological, Radiological, Nuclear, and Explosive (CBRNE) Personal Protective Equipment (PPE)
E4	CORE	Don Chemical, Biological, Radiological, Nuclear, and Explosive (CBRNE) Personal Protective Equipment (PPE)
E5	CORE	Draft messages (i.e., Antiterrorism (AT) operational report, etc.)
E4	NON-CORE	Employ grenades and other explosives
E4	CORE	Employ unambiguous warning devices (i.e., horns, sirens, lights, flares, etc.)
E4	NON-CORE	Employ warning shots
E4	CORE	Establish Navy Security Force (NSF) perimeters areas
E5	NON-CORE	Evaluate Military Working Dog (MWD) performance
E7	NON-CORE	Evaluate need for modification to Antiterrorism (AT) posture
E4	CORE	Execute unit barrier plans
E7	NON-CORE	Implement unit barrier plans
E4	CORE	Inspect Chemical, Biological, Radiological, Nuclear, and Explosive (CBRNE) Personal Protective Equipment (PPE)
E4	CORE	Lead Reactionary Force (RF) Team in tactical movements
E4	CORE	Maintain weapons and equipment (e.g. small arms, Crew Served Weapons (CSW), Non-Lethal Weapons (NLW), Civil Engineering Support Equipment (CESE), weapons mounts, etc.)
E4	CORE	Make description of a person, vehicle, watercraft, or aircraft
E7	NON-CORE	Manage Antiterrorism (AT) programs
E7	CORE	Manage Antiterrorism Tactical Watch Officer (ATTWO) program
E7	NON-CORE	Manage Antiterrorism Training Team (ATTT)
E7	CORE	Manage communications plans

ANTITERRORISM (AT) (CONT'D)

<u>Paygrade</u>	<u>Task Type</u>	<u>Task Statements</u>
E6	CORE	Manage in-port/at-sea security force
E6	CORE	Manage security force operations
E4	CORE	Neutralize active shooter threats
E4	CORE	Operate Crew Served Weapons (CSW)
E4	CORE	Operate night vision optical devices
E4	CORE	Operate Non-Lethal Weapons (NLW)
E4	CORE	Operate small arms
E5	NON-CORE	Order destructive fire
E5	NON-CORE	Order warning shots
E6	CORE	Organize in-port security plans
E4	CORE	Perform biometric data collection
E4	CORE	Perform blood borne pathogens prevention procedures
E4	CORE	Perform clearing barrel procedures (i.e., uploading/downloading weapons)
E6	CORE	Perform Command and Control (C2) functions
E4	CORE	Perform Crew Served Weapons (CSW) turnovers
E4	CORE	Perform equipment pre/post operational checks (i.e., vehicle, craft, night vision devices, etc.)
E4	CORE	Perform Naval Security Force (NSF) sustainment training
E4	CORE	Perform restraint procedures (e.g., control holds, handcuffing, takedowns, etc.)
E4	NON-CORE	Perform screen and reaction vessel duties (e.g., response, High Value Asset (HVA) protection, etc.)
E4	CORE	Perform self and equipment decontamination
E4	CORE	Perform tactical team operations
E4	CORE	Perform unarmed blocking techniques, striking techniques, and self-defense movements
E4	CORE	Perform verbal de-escalation procedures
E4	CORE	Perform weapons retention (pistol/rifle)
E5	CORE	Provide supervision of fixed and mobile posts
E4	CORE	Report Contacts of Interest (COI)
E4	CORE	Respond to external and internal threats
E7	CORE	Review criticality assessments
E4	CORE	Supervise clearing barrel procedures (i.e., uploading/downloading weapons)
E5	CORE	Supervise contraband or access inspections (i.e., vehicle, craft, personnel, baggage, etc.)
E5	CORE	Supervise equipment issue and operational checks
E4	CORE	Supervise security post turnovers
E5	CORE	Supervise the implementation of Pre-Planned Responses (PPRs)

LAW ENFORCEMENT

<u>Paygrade</u>	<u>Task Type</u>	<u>Task Statements</u>
E4	NON-CORE	Administer breathalyzer tests
E4	CORE	Administer Standardized Field Sobriety Tests (SFST)
E4	CORE	Advise suspects of acknowledgement and waiver of rights

LAW ENFORCEMENT (CONT'D)

<u>Paygrade</u>	<u>Task Type</u>	<u>Task Statements</u>
E4	CORE	Apprehend military suspects
E4	CORE	Collect evidence and contraband
E5	NON-CORE	Complete prisoner/detainee meal counts and issuance
E4	CORE	Conduct arrestee transports
E4	NON-CORE	Conduct contraband inspections of prisoner/detainee cell and common areas
E5	NON-CORE	Conduct criminal investigations
E4	CORE	Conduct interrogations
E4	CORE	Conduct interviews
E4	CORE	Conduct preliminary investigations
E4	NON-CORE	Conduct prisoner/detainee cell extractions
E4	CORE	Conduct prisoner/detainee escorts and transports
E5	NON-CORE	Conduct subject lineups
E4	CORE	Conduct subject turnovers
E4	CORE	Conduct suspect pursuits (i.e., vehicle, vessel, foot)
E4	CORE	Employ Navy Security Force (NSF) case management system (e.g., Consolidated Law Enforcement Operation Center (CLEOC))
E5	NON-CORE	Lead prisoner physical fitness training program
E5	CORE	Lead response to a civil disturbance
E6	NON-CORE	Manage corrections and detainee unit programs
E7	CORE	Manage criminal investigations
E7	NON-CORE	Manage prisoner/detainee movements within facility
E5	NON-CORE	Monitor prisoner/detainee movements outside of the facility
E5	CORE	Perform counterintelligence and criminal activity reporting
E4	CORE	Perform Criminal Justice (CJ) reporting procedures
E4	CORE	Perform initial crime scene response procedures (i.e., access control points)
E5	CORE	Perform police section mentoring and police supervision
E4	NON-CORE	Perform prisoner/detainee control center functions
E4	NON-CORE	Perform prisoner/detainee head counts
E4	NON-CORE	Perform prisoner/detainee riot or crowd control procedures
E4	CORE	Perform searches (e.g., personnel, vehicle, vessel, facility, etc.)
E5	NON-CORE	Perform surveillance operations
E4	CORE	Preserve crime scenes
E4	CORE	Process evidence and contraband
E4	NON-CORE	Process prisoners/detainees for confinement/detention and release
E4	CORE	Provide testimonies for official proceedings
E4	CORE	Respond to civil disturbances
E4	CORE	Respond to service calls (e.g., accidents, break-ins, suspicious activity, etc.)
E6	NON-CORE	Supervise contraband inspections of prisoner/detainee cell and common areas
E6	NON-CORE	Supervise control center operations

LAW ENFORCEMENT (CONT'D)

<u>Paygrade</u>	<u>Task Type</u>	<u>Task Statements</u>
E5	CORE	Supervise evidence processing
E6	NON-CORE	Supervise forced cell extractions
E6	NON-CORE	Supervise prisoner/detainee head counts
E6	NON-CORE	Supervise prisoner/detainee meal counts and issuance
E5	NON-CORE	Supervise prisoner/detainee movements and activities
E6	NON-CORE	Supervise prisoner/detainee riot or crowd control procedures
E5	CORE	Supervise searches (e.g., personnel, vehicle, vessel, facility, etc.)

NSF TRAINING

<u>Paygrade</u>	<u>Task Type</u>	<u>Task Statements</u>
E7	CORE	Manage qualification programs

PHYSICAL SECURITY

<u>Paygrade</u>	<u>Task Type</u>	<u>Task Statements</u>
E5	CORE	Conduct criticality assessments
E4	CORE	Conduct perimeter inspections
E5	CORE	Conduct physical security surveys
E5	CORE	Conduct vulnerability assessment
E5	CORE	Develop physical security plans
E5	CORE	Establish entry control points
E4	CORE	Implement use of compensatory security measures
E4	CORE	Operate Electronic Security System (ESS) Equipment (i.e., video, intrusion detection, proximity, etc.)
E4	CORE	Operate screening and detection equipment (i.e., x-ray machine, undercarriage camera, etc.)
E5	CORE	Perform core, padlock, lock rotations, and combination changes
E5	CORE	Perform crime prevention surveys
E4	CORE	Perform lock and seal inspections
E4	CORE	Perform lost/broken key and lock procedures
E5	CORE	Plan static/mobile Mission Essential Vulnerable Assets (MEVA) or High Value Assets (HVA) mission
E4	CORE	Protect static/mobile Mission Essential Vulnerable Assets (MEVA) or High Value Assets (HVA)
E5	CORE	Supervise static/mobile Mission Essential Vulnerable Assets (MEVA) or High Value Assets (HVA) mission
E4	CORE	Verify access control
E4	CORE	Verify identification credentials and documents
E4	CORE	Verify lockout credentials and authorizations procedures

Job Title**Naval Criminal Investigative Service Operations Specialist****Job Code****001497****Job Family**

Protective Service

NOC

TBD

Short Title (30 Characters)

NCIS OPERATIONS SPECIALIST

Short Title (14 Characters)

NCIS OPS SPEC

Pay Plan

Enlisted

Career Field

MA

Other Relationships and Rules

NEC P02A, P09A, P11A, P12A, P13A, 804A or other NECs as assigned

Job Description

NCIS Operations Specialists perform specialized duties in direct support of the Naval Criminal Investigative Service (NCIS) by investigating military offenses, protecting personnel in high-risk billets, providing unit and individual level antiterrorism training, and conducting vulnerability and readiness inspections and assessments.

DoD Relationship**Group Title**

Investigations

DoD Code

183200

O*NET Relationship**Occupation Title**

Detectives and Criminal
Investigators

SOC Code

33-3021.00

Job Family

Protective Service

Skills*Coordination**Critical Thinking**Speaking**Writing**Monitoring**Management of Material Resources**Systems Evaluation**Reading Comprehension**Management of Personnel Resources**Operation and Control***Abilities***Selective Attention**Oral Expression**Spatial Orientation**Written Comprehension**Reaction Time**Visualization**Deductive Reasoning**Written Expression**Inductive Reasoning**Information Ordering***ADMINISTRATION****Paygrade****Task Type****Task Statements**

E7

CORE

Approve Naval Security Force (NSF) watch bills

E7

CORE

Approve post orders

E7

CORE

Approve security reports and documents (e.g., incident reports, desk journals, communications log, Law Enforcement (LE) documents, physical security documents, etc.)

E5

CORE

Conduct case and file management

E4

CORE

Conduct inventories (i.e., Military Working Dog (MWD), Harbor Patrol Unit (HPU), SWF, VQ, CNIC, etc.)

E7

CORE

Conduct post requirements and manning assessments

E7

NON-CORE

Conduct pre-mission planning

E5

CORE

Conduct security briefs and debriefs

E4

CORE

Create security reports and documents (e.g., incident reports, desk journals, communications logs, Law Enforcement (LE) documents, physical security documents, etc.)

E4

CORE

Develop access lists and rosters

E5

CORE

Develop communications plans

E6

CORE

Develop Navy Security Force (NSF) policies and guidance

E6

CORE

Develop Pre-Planned Responses (PPR)/Standard Operating Procedures (SOP)

E5

CORE

Develop program waivers and exceptions to policies

E5

CORE

Draft Naval Security Force (NSF) watch bills

E7

CORE

Manage case and file management

ADMINISTRATION (CONT'D)

<u>Paygrade</u>	<u>Task Type</u>	<u>Task Statements</u>
E6	CORE	Manage evidence program
E7	CORE	Manage Naval Security Force (NSF) reserve unit
E7	CORE	Manage Standard Operating Procedure (SOP) program
E7	CORE	Manage watch standers (e.g., Navy Security Force (NSF), Auxiliary Security Force (ASF), In-Port Security Force (ISF), etc.)
E5	CORE	Perform analysis of crime statistics
E5	CORE	Perform shift rotation and passdown
E4	CORE	Perform Victim and Witness Assistance Program (VWAP) procedures
E5	CORE	Relieve Naval Security Force (NSF) personnel from duty
E7	CORE	Review Antiterrorism (AT) risk assessments
E7	CORE	Review physical security plan
E6	CORE	Review security reports and documents (e.g., incident reports, desk journals, communications logs, Law Enforcement (LE) documents, physical security documents, etc.)
E7	CORE	Review vulnerability assessment

ANTITERRORISM (AT)

<u>Paygrade</u>	<u>Task Type</u>	<u>Task Statements</u>
E4	CORE	Administer first aid (i.e., basic life support, Automated External Defibrillator (AED) procedures, Tactical Combat Casualty Care (TCCC), etc.)
E5	CORE	Advise forces on implementation of the Standing Rules for the Use of Force (SRUF)
E4	CORE	Apply restraint devices
E4	CORE	Apply use of force continuum
E7	NON-CORE	Brief Commander and Antiterrorism (AT) board on Force Protection Conditions (FPCON) changes
E4	CORE	Check in personally assigned weapons and equipment
E4	CORE	Check out personally assigned weapons and equipment
E4	CORE	Complete weapons qualifications (e.g., small arms, Crew Served Weapons (CSW), Non-Lethal Weapons (NLW), etc.)
E5	CORE	Conduct Antiterrorism (AT) risk assessments
E4	CORE	Conduct radio communications
E4	CORE	Conduct security escorts and transports
E4	CORE	Conduct Size, Activity, Location, Unit, Time, and Equipment (SALUTE) reports (e.g., radio, landline, and digital communications)
E4	CORE	Conduct surveillance detection
E4	CORE	Conduct tactical entries
E4	CORE	Conduct Tactical Evacuations (TACEVAC)
E4	CORE	Conduct tactical movements
E5	CORE	Coordinate inter-agency responses
E4	CORE	Detain personnel
E4	CORE	Detect Improvised Explosive Devices (IED)
E6	CORE	Develop Force Protection Conditions (FPCON) measures action matrix

ANTITERRORISM (AT) (CONT'D)

<u>Paygrade</u>	<u>Task Type</u>	<u>Task Statements</u>
E7	CORE	Direct Force Protection Conditions (FPCON) measures, actions, and changes
E4	CORE	Direct Reactionary Force (RF) members to fields of fire
E4	CORE	Doff Chemical, Biological, Radiological, Nuclear, and Explosive (CBRNE) Personal Protective Equipment (PPE)
E4	CORE	Don Chemical, Biological, Radiological, Nuclear, and Explosive (CBRNE) Personal Protective Equipment (PPE)
E5	CORE	Draft messages (i.e., Antiterrorism (AT) operational report, etc.)
E4	CORE	Establish Navy Security Force (NSF) perimeters areas
E5	NON-CORE	Evaluate Military Working Dog (MWD) performance
E7	NON-CORE	Evaluate need for modification to Antiterrorism (AT) posture
E4	CORE	Inspect Chemical, Biological, Radiological, Nuclear, and Explosive (CBRNE) Personal Protective Equipment (PPE)
E4	CORE	Lead Reactionary Force (RF) Team in tactical movements
E4	CORE	Maintain weapons and equipment (e.g. small arms, Crew Served Weapons (CSW), Non-Lethal Weapons (NLW), Civil Engineering Support Equipment (CESE), weapons mounts, etc.)
E4	CORE	Make description of a person, vehicle, watercraft, or aircraft
E7	CORE	Manage communications plans
E4	CORE	Neutralize active shooter threats
E4	CORE	Operate Non-Lethal Weapons (NLW)
E4	CORE	Operate small arms
E4	CORE	Perform biometric data collection
E4	CORE	Perform blood borne pathogens prevention procedures
E4	CORE	Perform clearing barrel procedures (i.e., uploading/downloading weapons)
E6	CORE	Perform Command and Control (C2) functions
E4	CORE	Perform equipment pre/post operational checks (i.e., vehicle, craft, night vision devices, etc.)
E4	CORE	Perform Naval Security Force (NSF) sustainment training
E4	CORE	Perform restraint procedures (e.g., control holds, handcuffing, takedowns, etc.)
E4	CORE	Perform self and equipment decontamination
E4	CORE	Perform tactical team operations
E4	CORE	Perform unarmed blocking techniques, striking techniques, and self-defense movements
E4	CORE	Perform verbal de-escalation procedures
E4	CORE	Perform weapons retention (pistol/rifle)
E4	CORE	Respond to external and internal threats
E7	CORE	Review criticality assessments
E4	CORE	Supervise clearing barrel procedures (i.e., uploading/downloading weapons)
E5	CORE	Supervise equipment issue and operational checks

LAW ENFORCEMENT

<u>Paygrade</u>	<u>Task Type</u>	<u>Task Statements</u>
E4	CORE	Advise suspects of acknowledgement and waiver of rights
E4	CORE	Collect evidence and contraband
E4	CORE	Conduct arrestee transports
E5	NON-CORE	Conduct criminal investigations
E4	CORE	Conduct interrogations
E4	CORE	Conduct interviews
E4	CORE	Conduct preliminary investigations
E4	CORE	Conduct prisoner/detainee escorts and transports
E5	NON-CORE	Conduct subject lineups
E4	CORE	Conduct subject turnovers
E4	CORE	Conduct suspect pursuits (i.e., vehicle, vessel, foot)
E4	CORE	Employ Navy Security Force (NSF) case management system (e.g., Consolidated Law Enforcement Operation Center (CLEOC))
E4	CORE	Execute warrants
E5	CORE	Lead response to a civil disturbance
E7	CORE	Manage criminal investigations
E5	CORE	Perform counterintelligence and criminal activity reporting
E4	CORE	Perform Criminal Justice (CJ) reporting procedures
E4	CORE	Perform initial crime scene response procedures (i.e., access control points)
E4	CORE	Perform searches (e.g., personnel, vehicle, vessel, facility, etc.)
E5	NON-CORE	Perform surveillance operations
E4	CORE	Preserve crime scenes
E4	CORE	Process evidence and contraband
E4	CORE	Provide testimonies for official proceedings
E4	CORE	Respond to civil disturbances
E5	CORE	Supervise evidence processing
E5	CORE	Supervise searches (e.g., personnel, vehicle, vessel, facility, etc.)

NSF TRAINING

<u>Paygrade</u>	<u>Task Type</u>	<u>Task Statements</u>
E7	CORE	Manage qualification programs

PHYSICAL SECURITY

<u>Paygrade</u>	<u>Task Type</u>	<u>Task Statements</u>
E5	CORE	Conduct criticality assessments
E5	CORE	Conduct physical security surveys
E5	NON-CORE	Conduct Protective Service Detail (PSD) formation movements
E5	NON-CORE	Conduct Protective Service Detail (PSD) motorcade movements
E5	NON-CORE	Conduct Protective Service Detail (PSD) operations (i.e., daily tasks, weapons issue, duty assignments, schedule coordination with principle, etc.)
E5	NON-CORE	Conduct protective service threat analysis

PHYSICAL SECURITY (CONT'D)

<u>Paygrade</u>	<u>Task Type</u>	<u>Task Statements</u>
E5	CORE	Conduct vulnerability assessment
E5	NON-CORE	Coordinate Protective Service Detail (PSD) assignments
E5	CORE	Develop physical security plans
E6	NON-CORE	Lead the close security of the principle
E7	NON-CORE	Manage Protective Service Detail (PSD) missions
E4	CORE	Operate Electronic Security System (ESS) Equipment (i.e., video, intrusion detection, proximity, etc.)
E5	CORE	Perform core, padlock, lock rotations, and combination changes
E4	CORE	Perform lock and seal inspections
E4	CORE	Perform lost/broken key and lock procedures
E5	NON-CORE	Perform unarmed defense against attacks during Protective Service Detail (PSD)
E5	NON-CORE	Perform weapon defense and disarming techniques for Protective Service Detail (PSD)
E5	CORE	Plan static/mobile Mission Essential Vulnerable Assets (MEVA) or High Value Assets (HVA) mission
E4	CORE	Protect static/mobile Mission Essential Vulnerable Assets (MEVA) or High Value Assets (HVA)
E6	NON-CORE	Supervise Command and Control (C2) of Protective Service Detail (PSD) team
E5	CORE	Supervise static/mobile Mission Essential Vulnerable Assets (MEVA) or High Value Assets (HVA) mission
E5	NON-CORE	Survey travel routes and site visits for Protective Service Details (PSD)
E4	CORE	Verify identification credentials and documents

Job Title**Expeditionary Security Specialist****Job Code****001504****Job Family**

Business and Financial Operations

NOC

TBD

Short Title (30 Characters)

EXPEDITIONARY SECURITY SPEC

Short Title (14 Characters)

EXPD SEC SPEC

Pay Plan

Enlisted

Career Field

MA

Other Relationships and Rules

NEC P05A, 717B, 718B, 775B, 804A, 804G, 811G, 853A or other NECs as assigned

Job Description

Expeditionary Security Specialists operate in major combat operations and provide security in support of counter-insurgency operations, humanitarian assistance/disaster response, theater cooperation, aircraft protection, law enforcement operations, maritime interdiction operations, and provide transition and stability during reconstruction operations.

DoD Relationship**Group Title**

Law Enforcement, General

DoD Code

183000

O*NET Relationship**Occupation Title**

Security Management Specialists

SOC Code

13-1199.07

Job Family

Business and Financial Operations

Skills

Coordination

Critical Thinking

Monitoring

Management of Material Resources

Operation and Control

Speaking

Writing

Systems Evaluation

Equipment Selection

Judgment and Decision Making

Abilities

Selective Attention

Visualization

Spatial Orientation

Written Comprehension

Oral Expression

Deductive Reasoning

Reaction Time

Written Expression

Information Ordering

Memorization

ADMINISTRATION**Paygrade****Task Type****Task Statements**

E7

CORE

Approve Naval Security Force (NSF) watch bills

E7

CORE

Approve post orders

E4

CORE

Conduct inventories (i.e., Military Working Dog (MWD), Harbor Patrol Unit (HPU), SWF, VQ, CNIC, etc.)

E7

CORE

Conduct post requirements and manning assessments

E7

NON-CORE

Conduct pre-mission planning

E5

CORE

Conduct security briefs and debriefs

E4

CORE

Develop access lists and rosters

E5

CORE

Develop communications plans

E6

CORE

Develop Navy Security Force (NSF) policies and guidance

E6

CORE

Develop Pre-Planned Responses (PPR)/Standard Operating Procedures (SOP)

E5

CORE

Develop program waivers and exceptions to policies

E6

CORE

Develop security force post orders

E5

CORE

Draft Naval Security Force (NSF) watch bills

E7

CORE

Manage post orders program

E7

CORE

Manage Standard Operating Procedure (SOP) program

E7

CORE

Manage watch standers (e.g., Navy Security Force (NSF), Auxiliary Security Force (ASF), In-Port Security Force (ISF), etc.)

E5

CORE

Perform post inspections

E5

CORE

Perform shift rotation and passdown

ADMINISTRATION (CONT'D)

<u>Paygrade</u>	<u>Task Type</u>	<u>Task Statements</u>
E5	CORE	Relieve Naval Security Force (NSF) personnel from duty
E7	CORE	Review Antiterrorism (AT) risk assessments
E7	CORE	Review physical security plan
E7	CORE	Review vulnerability assessment

ANTITERRORISM (AT)

<u>Paygrade</u>	<u>Task Type</u>	<u>Task Statements</u>
E4	CORE	Administer first aid (i.e., basic life support, Automated External Defibrillator (AED) procedures, Tactical Combat Casualty Care (TCCC), etc.)
E5	CORE	Advise forces on implementation of the Standing Rules for the Use of Force (SRUF)
E4	CORE	Apply restraint devices
E4	CORE	Apply use of force continuum
E7	NON-CORE	Brief Commander and Antiterrorism (AT) board on Force Protection Conditions (FPCON) changes
E4	CORE	Check in personally assigned weapons and equipment
E4	CORE	Check out personally assigned weapons and equipment
E4	NON-CORE	Combat small vessel casualties (e.g., fire, flooding, electrical, etc.)
E4	CORE	Complete weapons qualifications (e.g., small arms, Crew Served Weapons (CSW), Non-Lethal Weapons (NLW), etc.)
E5	CORE	Conduct Antiterrorism (AT) risk assessments
E4	NON-CORE	Conduct approach and visit boardings
E4	CORE	Conduct contraband or access inspections (i.e., vehicle, craft, personnel, baggage, etc.)
E4	NON-CORE	Conduct craft towing
E4	NON-CORE	Conduct daily boat reports
E5	CORE	Conduct guardmount
E5	NON-CORE	Conduct multiple boat formations
E4	CORE	Conduct patrols
E4	CORE	Conduct post turnovers
E4	CORE	Conduct radio communications
E4	NON-CORE	Conduct search and rescue operations
E4	NON-CORE	Conduct Seaward Continuum of Force (SCOF)
E4	CORE	Conduct security escorts and transports
E4	CORE	Conduct Size, Activity, Location, Unit, Time, and Equipment (SALUTE) reports (e.g., radio, landline, and digital communications)
E4	CORE	Conduct surveillance detection
E4	CORE	Conduct tactical entries
E4	CORE	Conduct Tactical Evacuations (TACEVAC)
E4	CORE	Conduct tactical movements
E4	CORE	Conduct traffic control
E4	NON-CORE	Conduct waterborne barrier operations
E6	NON-CORE	Control multiple vessels in mission execution

ANTITERRORISM (AT) (CONT'D)

<u>Paygrade</u>	<u>Task Type</u>	<u>Task Statements</u>
E4	CORE	Control security lighting equipment
E5	CORE	Coordinate inter-agency responses
E5	NON-CORE	Correct charts from notice to mariners
E4	CORE	Detain personnel
E4	CORE	Detect Improvised Explosive Devices (IED)
E6	CORE	Develop barrier plans
E6	CORE	Develop Force Protection Conditions (FPCON) measures action matrix
E7	CORE	Direct Force Protection Conditions (FPCON) measures, actions, and changes
E4	CORE	Direct Reactionary Force (RF) members to fields of fire
E4	CORE	Doff Chemical, Biological, Radiological, Nuclear, and Explosive (CBRNE) Personal Protective Equipment (PPE)
E4	CORE	Don Chemical, Biological, Radiological, Nuclear, and Explosive (CBRNE) Personal Protective Equipment (PPE)
E5	CORE	Draft messages (i.e., Antiterrorism (AT) operational report, etc.)
E4	NON-CORE	Employ grenades and other explosives
E4	CORE	Employ unambiguous warning devices (i.e., horns, sirens, lights, flares, etc.)
E4	NON-CORE	Employ warning shots
E4	CORE	Establish Navy Security Force (NSF) perimeters areas
E4	CORE	Evacuate personnel casualties from vessels
E5	NON-CORE	Evaluate Military Working Dog (MWD) performance
E7	NON-CORE	Evaluate need for modification to Antiterrorism (AT) posture
E5	CORE	Execute multiple asset protection missions
E4	CORE	Execute unit barrier plans
E7	NON-CORE	Implement unit barrier plans
E4	CORE	Inspect Chemical, Biological, Radiological, Nuclear, and Explosive (CBRNE) Personal Protective Equipment (PPE)
E4	NON-CORE	Layout Plan of Intended Movement (PIM) on charts
E4	CORE	Lead Reactionary Force (RF) Team in tactical movements
E4	NON-CORE	Load Communications Security (COMSEC) equipment
E4	CORE	Maintain weapons and equipment (e.g. small arms, Crew Served Weapons (CSW), Non-Lethal Weapons (NLW), Civil Engineering Support Equipment (CESE), weapons mounts, etc.)
E4	CORE	Make description of a person, vehicle, watercraft, or aircraft
E7	NON-CORE	Manage Antiterrorism (AT) programs
E7	CORE	Manage Antiterrorism Tactical Watch Officer (ATTWO) program
E7	NON-CORE	Manage Antiterrorism Training Team (ATTT)
E7	CORE	Manage communications plans
E6	CORE	Manage security force operations
E7	CORE	Manage security personnel and resources in the Emergency Operation Center (EOC)
E4	NON-CORE	Moor vessels

ANTITERRORISM (AT) (CONT'D)

<u>Paygrade</u>	<u>Task Type</u>	<u>Task Statements</u>
E4	CORE	Neutralize active shooter threats
E4	CORE	Operate Crew Served Weapons (CSW)
E4	NON-CORE	Operate Harbor Security Boat (HSB) electronic equipment
E4	CORE	Operate night vision optical devices
E4	CORE	Operate Non-Lethal Weapons (NLW)
E4	CORE	Operate small arms
E5	NON-CORE	Order destructive fire
E5	NON-CORE	Order warning shots
E4	NON-CORE	Perform afloat navigation (i.e., chart reading, aids to navigation, electronic navigation)
E4	NON-CORE	Perform anchoring
E4	CORE	Perform biometric data collection
E4	CORE	Perform blood borne pathogens prevention procedures
E4	CORE	Perform building and facility security checks
E4	CORE	Perform clearing barrel procedures (i.e., uploading/downloading weapons)
E6	CORE	Perform Command and Control (C2) functions
E4	NON-CORE	Perform Contact of Interest (COI) intercept techniques (shadowing and herding)
E4	NON-CORE	Perform craft launches and recoveries
E4	CORE	Perform Crew Served Weapons (CSW) turnovers
E4	CORE	Perform equipment pre/post operational checks (i.e., vehicle, craft, night vision devices, etc.)
E4	CORE	Perform Naval Security Force (NSF) sustainment training
E4	CORE	Perform restraint procedures (e.g., control holds, handcuffing, takedowns, etc.)
E4	NON-CORE	Perform screen and reaction vessel duties (e.g., response, High Value Asset (HVA) protection, etc.)
E4	CORE	Perform self and equipment decontamination
E4	CORE	Perform tactical team operations
E4	CORE	Perform unarmed blocking techniques, striking techniques, and self-defense movements
E4	CORE	Perform verbal de-escalation procedures
E4	CORE	Perform weapons retention (pistol/rifle)
E4	NON-CORE	Pilot Navy Security Forces (NSF) vessels
E6	CORE	Plan multiple asset protection missions
E4	NON-CORE	Prepare Operational Risk Management (ORM) for underway operations
E4	NON-CORE	Prepare vessels for airlift
E5	CORE	Provide supervision of fixed and mobile posts
E4	NON-CORE	Pull alongside static vessels or vessels making way
E4	CORE	Report Contacts of Interest (COI)
E4	CORE	Respond to external and internal threats
E7	CORE	Review criticality assessments
E6	NON-CORE	Review patrol orders
E4	CORE	Supervise clearing barrel procedures (i.e., uploading/downloading weapons)

ANTITERRORISM (AT) (CONT'D)

<u>Paygrade</u>	<u>Task Type</u>	<u>Task Statements</u>
E5	CORE	Supervise contraband or access inspections (i.e., vehicle, craft, personnel, baggage, etc.)
E5	CORE	Supervise equipment issue and operational checks
E5	NON-CORE	Supervise fueling operations (i.e., small vessel, Civil Engineering Support Equipment (CESE) equipment)
E6	NON-CORE	Supervise navigational track
E4	CORE	Supervise security post turnovers
E5	CORE	Supervise the implementation of Pre-Planned Responses (PPRs)
E5	NON-CORE	Supervise vessel launch and recovery
E5	NON-CORE	Troubleshoot engineering issues

LAW ENFORCEMENT

<u>Paygrade</u>	<u>Task Type</u>	<u>Task Statements</u>
E4	CORE	Advise suspects of acknowledgement and waiver of rights
E5	NON-CORE	Complete prisoner/detainee meal counts and issuance
E4	CORE	Conduct arrestee transports
E4	NON-CORE	Conduct contraband inspections of prisoner/detainee cell and common areas
E4	CORE	Conduct interrogations
E4	CORE	Conduct interviews
E4	CORE	Conduct preliminary investigations
E4	NON-CORE	Conduct prisoner/detainee cell extractions
E4	CORE	Conduct prisoner/detainee escorts and transports
E4	CORE	Conduct subject turnovers
E4	CORE	Conduct suspect pursuits (i.e., vehicle, vessel, foot)
E4	CORE	Conduct vehicle suspect extractions
E5	CORE	Lead response to a civil disturbance
E7	NON-CORE	Manage prisoner/detainee movements within facility
E5	NON-CORE	Monitor prisoner/detainee movements outside of the facility
E4	CORE	Operate emergency vehicles
E4	CORE	Perform Criminal Justice (CJ) reporting procedures
E4	CORE	Perform initial crime scene response procedures (i.e., access control points)
E4	NON-CORE	Perform prisoner/detainee head counts
E4	NON-CORE	Perform prisoner/detainee riot or crowd control procedures
E4	CORE	Perform searches (e.g., personnel, vehicle, vessel, facility, etc.)
E5	NON-CORE	Perform surveillance operations
E4	CORE	Preserve crime scenes
E4	NON-CORE	Process prisoners/detainees for confinement/detention and release
E4	CORE	Provide testimonies for official proceedings
E4	CORE	Respond to civil disturbances
E6	NON-CORE	Supervise contraband inspections of prisoner/detainee cell and common areas
E6	NON-CORE	Supervise control center operations
E6	NON-CORE	Supervise forced cell extractions

LAW ENFORCEMENT (CONT'D)

<u>Paygrade</u>	<u>Task Type</u>	<u>Task Statements</u>
E6	NON-CORE	Supervise prisoner/detainee head counts
E6	NON-CORE	Supervise prisoner/detainee meal counts and issuance
E5	NON-CORE	Supervise prisoner/detainee movements and activities
E6	NON-CORE	Supervise prisoner/detainee riot or crowd control procedures
E5	CORE	Supervise searches (e.g., personnel, vehicle, vessel, facility, etc.)

NSF TRAINING

<u>Paygrade</u>	<u>Task Type</u>	<u>Task Statements</u>
E7	CORE	Manage qualification programs

PHYSICAL SECURITY

<u>Paygrade</u>	<u>Task Type</u>	<u>Task Statements</u>
E5	CORE	Conduct criticality assessments
E4	NON-CORE	Conduct expeditionary convoy operations
E4	CORE	Conduct perimeter inspections
E5	CORE	Conduct physical security surveys
E5	CORE	Conduct vulnerability assessment
E5	CORE	Develop physical security plans
E4	NON-CORE	Employ expeditionary equipment
E5	CORE	Establish entry control points
E4	CORE	Implement use of compensatory security measures
E4	CORE	Operate Electronic Security System (ESS) Equipment (i.e., video, intrusion detection, proximity, etc.)
E4	CORE	Operate screening and detection equipment (i.e., x-ray machine, undercarriage camera, etc.)
E5	CORE	Perform core, padlock, lock rotations, and combination changes
E4	NON-CORE	Perform land navigations
E4	CORE	Perform lock and seal inspections
E4	CORE	Perform lost/broken key and lock procedures
E5	CORE	Plan static/mobile Mission Essential Vulnerable Assets (MEVA) or High Value Assets (HVA) mission
E4	CORE	Protect static/mobile Mission Essential Vulnerable Assets (MEVA) or High Value Assets (HVA)
E5	CORE	Supervise static/mobile Mission Essential Vulnerable Assets (MEVA) or High Value Assets (HVA) mission
E4	CORE	Verify access control
E4	CORE	Verify identification credentials and documents

Job Title**Strategic Asset Security Specialist****Job Code****001509****Job Family**

Business and Financial Operations

NOC

TBD

Short Title (30 Characters)

STRATEGIC ASSET SECURITY SPEC

Short Title (14 Characters)

STRAT SEC SPEC

Pay Plan

Enlisted

Career Field

MA

Other Relationships and Rules

NEC P03A, P04A, P05A, P06A, P11A, 717B, 718B, 804A, 853A or other NECs as assigned

Job Description

Strategic Asset Security Specialists provide protection and continual physical security of the nation's nuclear forces and Fleet Air Reconnaissance Squadron (VQ) Take Charge and Move Out (TACAMO) aircraft. As members of the Marine Corps Security Force Battalions (MCSFBn) at Strategic Weapons Facilities (SWF), Strategic Asset Security Specialists perform Nuclear Weapons Security (NWS) operations. They also perform TACAMO operations as members of Strategic Communications Wing One, Fleet Air Reconnaissance Squadrons and U.S. Strategic Command (USSTRATCOM) Airborne Command Post. The Chief of Naval Operations (CNO) and Manning Control Authorities (MCA) give SWF and VQ activities CNO Priority 1 in the assignment of personnel assets.

DoD RelationshipGroup Title

Law Enforcement, General

DoD Code

183000

O*NET RelationshipOccupation Title

Security Management Specialists

SOC Code

13-1199.07

Job Family

Business and Financial Operations

Skills*Coordination**Critical Thinking**Management of Material Resources**Monitoring**Speaking**Writing**Operation and Control**Systems Evaluation**Reading Comprehension**Equipment Selection***Abilities***Selective Attention**Spatial Orientation**Written Comprehension**Oral Expression**Visualization**Deductive Reasoning**Reaction Time**Written Expression**Information Ordering**Memorization***ADMINISTRATION****Paygrade****Task Type****Task Statements**

E7

CORE

Approve Naval Security Force (NSF) watch bills

E7

CORE

Approve post orders

E5

NON-CORE

Brief security officer for Military Working Dog (MWD) operations

E4

NON-CORE

Complete Military Working Dog (MWD) required reports and forms (e.g., training records, utilization records, certification data, etc.)

E4

CORE

Complete Operational Risk Management (ORM) assessments for Harbor Patrol Unit (HPU) operations

E4

CORE

Conduct inventories (i.e., Military Working Dog (MWD), Harbor Patrol Unit (HPU), SWF, VQ, CNIC, etc.)

E4

CORE

Conduct kennel checks

E7

CORE

Conduct post requirements and manning assessments

E7

NON-CORE

Conduct pre-mission planning

E5

CORE

Conduct security briefs and debriefs

E4

CORE

Develop access lists and rosters

E5

CORE

Develop communications plans

E6

CORE

Develop Navy Security Force (NSF) policies and guidance

E6

CORE

Develop Pre-Planned Responses (PPR)/Standard Operating Procedures (SOP)

E5

CORE

Develop program waivers and exceptions to policies

E6

CORE

Develop security force post orders

ADMINISTRATION (CONT'D)

<u>Paygrade</u>	<u>Task Type</u>	<u>Task Statements</u>
E5	CORE	Draft Naval Security Force (NSF) watch bills
E4	NON-CORE	Maintain Personal Reliability Program (PRP) certification
E6	NON-CORE	Manage accountability of Military Working Dog (MWD) explosive training aids
E5	NON-CORE	Manage drug training programs for Military Working Dog (MWD) program
E6	NON-CORE	Manage explosive training programs for Military Working Dog (MWD) program
E5	NON-CORE	Manage Military Working Dog (MWD) training
E7	CORE	Manage post orders program
E7	NON-CORE	Manage regional Military Working Dog (MWD) special tasking assignments
E7	CORE	Manage Standard Operating Procedure (SOP) program
E7	CORE	Manage watch standers (e.g., Navy Security Force (NSF), Auxiliary Security Force (ASF), In-Port Security Force (ISF), etc.)
E5	CORE	Perform post inspections
E5	CORE	Perform shift rotation and passdown
E5	CORE	Relieve Naval Security Force (NSF) personnel from duty
E7	CORE	Review Antiterrorism (AT) risk assessments
E5	NON-CORE	Review Military Working Dog (MWD) required reports and forms (e.g., training records, utilization records, certification data, etc.)
E7	CORE	Review physical security plan
E7	CORE	Review vulnerability assessment

ANTITERRORISM (AT)

<u>Paygrade</u>	<u>Task Type</u>	<u>Task Statements</u>
E6	CORE	Activate Emergency Operations Centers (EOC)
E4	CORE	Administer first aid (i.e., basic life support, Automated External Defibrillator (AED) procedures, Tactical Combat Casualty Care (TCCC), etc.)
E5	CORE	Advise forces on implementation of the Standing Rules for the Use of Force (SRUF)
E4	CORE	Apply restraint devices
E4	CORE	Apply use of force continuum
E7	NON-CORE	Brief Commander and Antiterrorism (AT) board on Force Protection Conditions (FPCON) changes
E4	CORE	Check in personally assigned weapons and equipment
E4	CORE	Check out personally assigned weapons and equipment
E4	NON-CORE	Combat small vessel casualties (e.g., fire, flooding, electrical, etc.)
E4	CORE	Complete weapons qualifications (e.g., small arms, Crew Served Weapons (CSW), Non-Lethal Weapons (NLW), etc.)
E5	CORE	Conduct Antiterrorism (AT) risk assessments
E4	NON-CORE	Conduct approach and visit boardings
E4	NON-CORE	Conduct command Military Working Dog (MWD) detection certification
E4	CORE	Conduct contraband or access inspections (i.e., vehicle, craft, personnel, baggage, etc.)
E4	NON-CORE	Conduct craft towing
E4	NON-CORE	Conduct daily boat reports

ANTITERRORISM (AT) (CONT'D)

<u>Paygrade</u>	<u>Task Type</u>	<u>Task Statements</u>
E5	CORE	Conduct guardmount
E4	NON-CORE	Conduct Military Working Dog (MWD) sweeps as requested
E5	NON-CORE	Conduct multiple boat formations
E4	CORE	Conduct patrols
E4	CORE	Conduct post turnovers
E4	CORE	Conduct radio communications
E4	NON-CORE	Conduct sanitation duties for Military Working Dog (MWD) kennels (e.g., cleaning, feeding, medication, etc.)
E4	NON-CORE	Conduct search and rescue operations
E4	NON-CORE	Conduct Seaward Continuum of Force (SCOF)
E4	CORE	Conduct security escorts and transports
E4	CORE	Conduct Size, Activity, Location, Unit, Time, and Equipment (SALUTE) reports (e.g., radio, landline, and digital communications)
E4	CORE	Conduct surveillance detection
E4	CORE	Conduct tactical entries
E4	CORE	Conduct Tactical Evacuations (TACEVAC)
E4	CORE	Conduct tactical movements
E4	CORE	Conduct traffic control
E4	NON-CORE	Conduct waterborne barrier operations
E6	NON-CORE	Control multiple vessels in mission execution
E4	CORE	Control security lighting equipment
E5	CORE	Coordinate inter-agency responses
E5	NON-CORE	Correct charts from notice to mariners
E4	CORE	Detain personnel
E4	CORE	Detect Improvised Explosive Devices (IED)
E6	CORE	Develop Antiterrorism (AT) plans
E6	CORE	Develop barrier plans
E6	CORE	Develop Force Protection Conditions (FPCON) measures action matrix
E7	CORE	Direct Force Protection Conditions (FPCON) measures, actions, and changes
E4	CORE	Direct Reactionary Force (RF) members to fields of fire
E4	CORE	Don Chemical, Biological, Radiological, Nuclear, and Explosive (CBRNE) Personal Protective Equipment (PPE)
E4	CORE	Don Chemical, Biological, Radiological, Nuclear, and Explosive (CBRNE) Personal Protective Equipment (PPE)
E5	CORE	Draft messages (i.e., Antiterrorism (AT) operational report, etc.)
E4	NON-CORE	Employ Military Working Dog (MWD)
E4	CORE	Employ unambiguous warning devices (i.e., horns, sirens, lights, flares, etc.)
E5	CORE	Establish Incident Command Post
E4	CORE	Establish Navy Security Force (NSF) perimeters areas
E4	CORE	Evacuate personnel casualties from vessels

ANTITERRORISM (AT) (CONT'D)

<u>Paygrade</u>	<u>Task Type</u>	<u>Task Statements</u>
E5	NON-CORE	Evaluate Military Working Dog (MWD) performance
E7	NON-CORE	Evaluate need for modification to Antiterrorism (AT) posture
E5	CORE	Execute duties as on-scene commander
E5	CORE	Execute multiple asset protection missions
E4	CORE	Execute unit barrier plans
E7	NON-CORE	Implement unit barrier plans
E4	CORE	Inspect Chemical, Biological, Radiological, Nuclear, and Explosive (CBRNE) Personal Protective Equipment (PPE)
E4	NON-CORE	Layout Plan of Intended Movement (PIM) on charts
E4	CORE	Lead Reactionary Force (RF) Team in tactical movements
E4	CORE	Maintain weapons and equipment (e.g. small arms, Crew Served Weapons (CSW), Non-Lethal Weapons (NLW), Civil Engineering Support Equipment (CESE), weapons mounts, etc.)
E4	CORE	Make description of a person, vehicle, watercraft, or aircraft
E7	NON-CORE	Manage Antiterrorism (AT) programs
E7	NON-CORE	Manage Antiterrorism Training Team (ATTT)
E7	CORE	Manage communications plans
E7	CORE	Manage harbor security program
E5	NON-CORE	Manage Military Working Dog (MWD) teams
E6	CORE	Manage security force operations
E7	CORE	Manage security personnel and resources in the Emergency Operation Center (EOC)
E4	NON-CORE	Moor vessels
E4	CORE	Neutralize active shooter threats
E4	CORE	Operate Crew Served Weapons (CSW)
E4	NON-CORE	Operate Harbor Security Boat (HSB) electronic equipment
E4	CORE	Operate night vision optical devices
E4	CORE	Operate Non-Lethal Weapons (NLW)
E4	CORE	Operate small arms
E5	NON-CORE	Order destructive fire
E4	NON-CORE	Perform afloat navigation (i.e., chart reading, aids to navigation, electronic navigation)
E4	NON-CORE	Perform anchoring
E4	CORE	Perform blood borne pathogens prevention procedures
E4	CORE	Perform building and facility security checks
E4	CORE	Perform clearing barrel procedures (i.e., uploading/downloading weapons)
E6	CORE	Perform Command and Control (C2) functions
E4	NON-CORE	Perform Contact of Interest (COI) intercept techniques (shadowing and herding)
E4	CORE	Perform Crew Served Weapons (CSW) turnovers
E4	CORE	Perform equipment pre/post operational checks (i.e., vehicle, craft, night vision devices, etc.)
E4	NON-CORE	Perform first aid to Military Working Dogs (MWD)

ANTITERRORISM (AT) (CONT'D)

<u>Paygrade</u>	<u>Task Type</u>	<u>Task Statements</u>
E4	CORE	Perform Naval Security Force (NSF) sustainment training
E4	CORE	Perform restraint procedures (e.g., control holds, handcuffing, takedowns, etc.)
E4	NON-CORE	Perform safety checks of Military Working Dog (MWD) equipment
E4	NON-CORE	Perform screen and reaction vessel duties (e.g., response, High Value Asset (HVA) protection, etc.)
E4	CORE	Perform self and equipment decontamination
E4	CORE	Perform tactical team operations
E4	CORE	Perform unarmed blocking techniques, striking techniques, and self-defense movements
E4	CORE	Perform verbal de-escalation procedures
E4	CORE	Perform weapons retention (pistol/rifle)
E4	NON-CORE	Pilot Navy Security Forces (NSF) vessels
E6	CORE	Plan multiple asset protection missions
E4	NON-CORE	Prepare Operational Risk Management (ORM) for underway operations
E4	NON-CORE	Prepare vessels for airlift
E5	CORE	Provide supervision of fixed and mobile posts
E4	NON-CORE	Pull alongside static vessels or vessels making way
E4	CORE	Report Contacts of Interest (COI)
E4	CORE	Respond to external and internal threats
E7	CORE	Review criticality assessments
E6	NON-CORE	Review patrol orders
E4	CORE	Supervise clearing barrel procedures (i.e., uploading/downloading weapons)
E5	CORE	Supervise contraband or access inspections (i.e., vehicle, craft, personnel, baggage, etc.)
E5	CORE	Supervise equipment issue and operational checks
E5	NON-CORE	Supervise fueling operations (i.e., small vessel, Civil Engineering Support Equipment (CESE) equipment)
E6	NON-CORE	Supervise navigational track
E4	CORE	Supervise security post turnovers
E5	CORE	Supervise the implementation of Pre-Planned Responses (PPRs)
E5	NON-CORE	Supervise vessel launch and recovery
E5	NON-CORE	Troubleshoot engineering issues

LAW ENFORCEMENT

<u>Paygrade</u>	<u>Task Type</u>	<u>Task Statements</u>
E4	CORE	Advise suspects of acknowledgement and waiver of rights
E4	CORE	Conduct arrestee transports
E4	NON-CORE	Conduct command Military Working Dog (MWD) patrol certification
E4	CORE	Conduct interrogations
E4	CORE	Conduct interviews
E4	CORE	Conduct preliminary investigations
E4	CORE	Conduct subject turnovers
E4	CORE	Conduct suspect pursuits (i.e., vehicle, vessel, foot)

LAW ENFORCEMENT (CONT'D)

<u>Paygrade</u>	<u>Task Type</u>	<u>Task Statements</u>
E4	CORE	Conduct vehicle suspect extractions
E5	CORE	Lead response to a civil disturbance
E4	CORE	Perform Criminal Justice (CJ) reporting procedures
E4	CORE	Perform initial crime scene response procedures (i.e., access control points)
E4	CORE	Perform searches (e.g., personnel, vehicle, vessel, facility, etc.)
E5	NON-CORE	Perform surveillance operations
E4	CORE	Preserve crime scenes
E4	CORE	Provide testimonies for official proceedings
E4	CORE	Respond to civil disturbances
E5	CORE	Supervise searches (e.g., personnel, vehicle, vessel, facility, etc.)

NSF TRAINING

<u>Paygrade</u>	<u>Task Type</u>	<u>Task Statements</u>
E7	CORE	Manage qualification programs

PHYSICAL SECURITY

<u>Paygrade</u>	<u>Task Type</u>	<u>Task Statements</u>
E5	CORE	Conduct criticality assessments
E4	CORE	Conduct perimeter inspections
E5	CORE	Conduct physical security surveys
E4	CORE	Conduct strategic asset convoy
E5	CORE	Conduct vulnerability assessment
E5	CORE	Develop physical security plans
E4	NON-CORE	Enforce Limited Access Areas (LAA)
E5	CORE	Establish entry control points
E4	CORE	Implement use of compensatory security measures
E4	CORE	Operate Electronic Security System (ESS) Equipment (i.e., video, intrusion detection, proximity, etc.)
E4	CORE	Operate screening and detection equipment (i.e., x-ray machine, undercarriage camera, etc.)
E5	CORE	Perform core, padlock, lock rotations, and combination changes
E4	CORE	Perform lock and seal inspections
E4	CORE	Perform lost/broken key and lock procedures
E5	CORE	Plan static/mobile Mission Essential Vulnerable Assets (MEVA) or High Value Assets (HVA) mission
E4	CORE	Protect static/mobile Mission Essential Vulnerable Assets (MEVA) or High Value Assets (HVA)
E5	CORE	Supervise static/mobile Mission Essential Vulnerable Assets (MEVA) or High Value Assets (HVA) mission
E4	CORE	Verify access control
E4	CORE	Verify identification credentials and documents

Job Title**Naval Security Forces Trainer/Planner****Job Code****001514****Job Family**
Management**NOC**
TBD**Short Title (30 Characters)**
NSF TRAINER/PLANNER**Short Title (14 Characters)**
NSF TRAIN PLAN**Pay Plan**
Enlisted**Career Field**
MA**Other Relationships and Rules**
NEC P05A, P06A, P08A, P13A, 717B, 718B, 804A, 853A or other NECs as assigned**Job Description**

NSF Trainer/Planners provide training and planning of all functions associated with operational readiness, effectiveness, and performance of the Naval Security Force (NSF), accomplished within the capability of the unit through instruction, evaluation, analysis, and improvement. The NSF Trainer/Planner also leads or assists in the development, management, and execution of all Force Protection (FP) program plans. NSF Trainer/Planners are responsible for verifying training, qualifications, and that members of the unit are equipped to execute the mission successfully.

DoD Relationship

<u>Group Title</u>	<u>DoD Code</u>
Law Enforcement, General	183000

O*NET Relationship

<u>Occupation Title</u>	<u>SOC Code</u>	<u>Job Family</u>
Training and Development Managers	11-3131.00	Management

Skills

Management of Material Resources
Speaking
Active Listening
Systems Evaluation
Writing
Coordination
Monitoring
Learning Strategies
Instructing
Critical Thinking

Abilities

Selective Attention
Oral Expression
Speech Clarity
Information Ordering
Written Expression
Written Comprehension
Inductive Reasoning
Deductive Reasoning
Finger Dexterity
Manual Dexterity

ADMINISTRATION

Paygrade	Task Type	Task Statements
E4	CORE	Conduct inventories (i.e., Military Working Dog (MWD), Harbor Patrol Unit (HPU), SWF, VQ, CNIC, etc.)
E7	CORE	Conduct post requirements and manning assessments
E5	CORE	Conduct security briefs and debriefs
E4	CORE	Develop access lists and rosters
E6	CORE	Develop Navy Security Force (NSF) policies and guidance
E6	CORE	Develop Pre-Planned Responses (PPR)/Standard Operating Procedures (SOP)
E7	CORE	Manage Standard Operating Procedure (SOP) program
E5	CORE	Relieve Naval Security Force (NSF) personnel from duty

ANTITERRORISM (AT)

Paygrade	Task Type	Task Statements
E4	CORE	Administer first aid (i.e., basic life support, Automated External Defibrillator (AED) procedures, Tactical Combat Casualty Care (TCCC), etc.)
E5	CORE	Advise forces on implementation of the Standing Rules for the Use of Force (SRUF)
E4	CORE	Check in personally assigned weapons and equipment
E4	CORE	Check out personally assigned weapons and equipment
E4	CORE	Complete weapons qualifications (e.g., small arms, Crew Served Weapons (CSW), Non-Lethal Weapons (NLW), etc.)
E4	CORE	Conduct radio communications

ANTITERRORISM (AT) (CONT'D)

<u>Paygrade</u>	<u>Task Type</u>	<u>Task Statements</u>
E4	CORE	Don Chemical, Biological, Radiological, Nuclear, and Explosive (CBRNE) Personal Protective Equipment (PPE)
E4	CORE	Don Chemical, Biological, Radiological, Nuclear, and Explosive (CBRNE) Personal Protective Equipment (PPE)
E4	CORE	Inspect Chemical, Biological, Radiological, Nuclear, and Explosive (CBRNE) Personal Protective Equipment (PPE)
E4	CORE	Maintain weapons and equipment (e.g. small arms, Crew Served Weapons (CSW), Non-Lethal Weapons (NLW), Civil Engineering Support Equipment (CESE), weapons mounts, etc.)
E4	CORE	Perform blood borne pathogens prevention procedures
E4	CORE	Perform clearing barrel procedures (i.e., uploading/downloading weapons)
E4	CORE	Perform Naval Security Force (NSF) sustainment training
E4	CORE	Perform self and equipment decontamination
E4	CORE	Supervise clearing barrel procedures (i.e., uploading/downloading weapons)
E5	CORE	Supervise equipment issue and operational checks

LAW ENFORCEMENT

<u>Paygrade</u>	<u>Task Type</u>	<u>Task Statements</u>
E4	CORE	Advise suspects of acknowledgement and waiver of rights
E4	CORE	Conduct case presentations
E4	CORE	Conduct interrogations
E4	CORE	Conduct interviews
E4	CORE	Perform searches (e.g., personnel, vehicle, vessel, facility, etc.)

NSF TRAINING

<u>Paygrade</u>	<u>Task Type</u>	<u>Task Statements</u>
E5	CORE	Assist in developing an Integrated Training Team (ITT) scenario
E4	CORE	Conduct Cardio-Pulmonary Resuscitation (CPR) training
E5	NON-CORE	Conduct corrections and detainee guard training
E5	NON-CORE	Conduct Crew Served Weapons (CSW) training
E5	CORE	Conduct drills and exercises
E5	CORE	Conduct emergency vehicle operator training
E4	NON-CORE	Conduct Man Overboard (MOB) evolution
E5	CORE	Conduct Navy Security Forces (NSF) group-paced classroom and laboratory instruction
E5	CORE	Conduct Non-Lethal Weapons (NLW) training
E5	NON-CORE	Conduct small arms training
E6	CORE	Conduct Standard Compliance Course training
E5	NON-CORE	Conduct weapons qualifications (e.g., small arms, Crew Served Weapons (CSW), Non-Lethal Weapons (NLW), etc.)
E5	CORE	Conduct weekly or monthly progression report for under instruction patrol officers
E5	CORE	Develop drill and exercise materials (e.g., packages, guides, etc.)
E5	CORE	Develop Navy Security Force (NSF) instructor and trainee guides
E5	CORE	Develop Navy Security Force (NSF) lesson plans

NSF TRAINING (CONT'D)

<u>Paygrade</u>	<u>Task Type</u>	<u>Task Statements</u>
E5	CORE	Develop qualification testing material
E4	CORE	Employ training aids for Military Working Dogs (MWD) (i.e., explosives, drugs, patrol equipment, etc.)
E5	CORE	Evaluate Navy Security Force (NSF) training
E5	CORE	Evaluate personnel during drills and exercises
E6	NON-CORE	Instruct Security Reaction Force-Basic (SRF-B) course training
E5	CORE	Maintain individual Navy Security Force (NSF) training records
E7	CORE	Manage Crew Served Weapons (CSW) program
E7	CORE	Manage Data Housing and Reporting Tool (DHART) program
E7	CORE	Manage Navy Security Force (NSF) training programs
E6	CORE	Manage Non-Lethal Weapons (NLW) program
E7	CORE	Manage qualification programs
E7	CORE	Manage Small Arms Weapons program
E7	CORE	Manage Standard Compliance Course program
E4	NON-CORE	Perform as a decoy for Military Working Dog (MWD) training
E6	NON-CORE	Supervise correction/detainee staff training
E5	CORE	Train personnel during drills and exercises