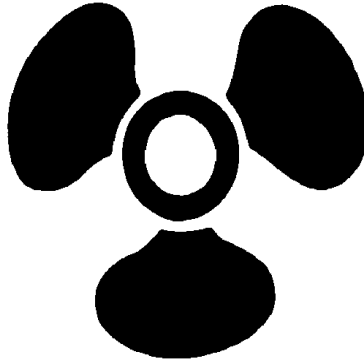


CHAPTER 51



MACHINIST'S MATE (MM)

NAVPERS 18068F-51I
Change 100

Updated: October 2024

Enclosure (1)

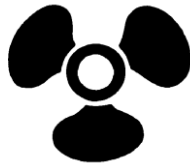
TABLE OF CONTENTS
MACHINIST'S MATE (MM)

SCOPE OF RATING	MM-3
GENERAL INFORMATION	MM-4
PROPULSION PLANT AND AUXILIARY SYSTEMS MAINTAINER	MM-5
LABORATORY MANAGEMENT	MM-5
MECHANICAL SYSTEMS MAINTENANCE	MM-6
MECHANICAL SYSTEMS OPERATION	MM-9
PROPULSION PLANT AND AUXILIARY SYSTEMS TECHNICIAN	MM-12
LABORATORY MANAGEMENT	MM-12
MECHANICAL SYSTEMS MAINTENANCE	MM-12
TECHNICAL ADMINISTRATION	MM-15
PROPULSION PLANT AND AUXILIARY SYSTEMS MANAGER	MM-16
ENGINEERING MANAGEMENT	MM-16
LABORATORY MANAGEMENT	MM-17
MECHANICAL SYSTEMS MAINTENANCE	MM-17
TECHNICAL ADMINISTRATION	MM-17

NAVY ENLISTED OCCUPATIONAL STANDARD

FOR

MACHINIST'S MATE (MM)



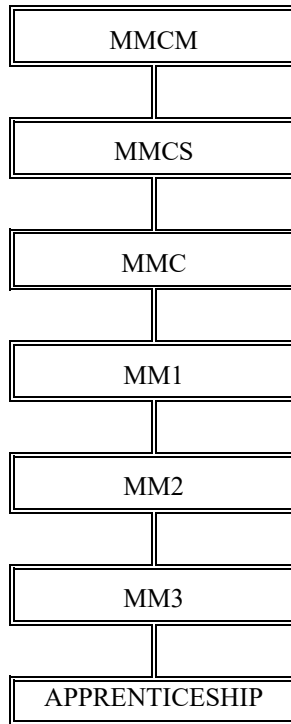
SCOPE OF RATING

Machinist's Mates (MM) operate, maintain, and repair (organizational and intermediate level) ship propulsion machinery, auxiliary equipment, and outside machinery, such as: steering gear engine, hoisting machinery, food preparation equipment, refrigeration and air conditioning equipment, windlasses, elevators, and laundry equipment; operate and maintain (organizational and intermediate level) marine boilers, pumps, forced draft blowers, and heat exchangers; perform tests, transfers, and inventory of lubricating oils, fuels, and water; maintain records and reports; and generate and stow industrial gases.

This Occupational Standard is to be incorporated in Volume I, Part B, of the Manual of Navy Enlisted Manpower and Personnel Classifications and Occupational Standards (NAVPERS 18068F) In Chapter 51.

GENERAL INFORMATION

CAREER PATTERN



Normal path of advancement to Chief Warrant Officer can be found in OPNAVINST 1420.1.

For rating entry requirements, refer to MILPERSMAN 1306-618.

SAFETY

The observance of Operational Risk Management (ORM) and proper safety precautions in all areas is an integral part of each billet and the responsibility of every Sailor; therefore, it is a universal requirement for all ratings.

Job Title**Propulsion Plant and Auxiliary Systems Maintainer****Job Code****003005****Job Family**

Installation, Maintenance, and Repair

NOC

TBD

Short Title (30 Characters)

PROPU PLANT/AUX SYS MAINTAINER

Short Title (14 Characters)

PROPU SYS MAIN

Pay Plan

Enlisted

Career Field

MM

Other Relationships and Rules

NEC UXXX and 7XXX series and other NECs as assigned

Job Description

Propulsion Plant and Auxiliary Systems Maintainers operate and maintain steam turbines and reduction gears used for ship propulsion and auxiliary machinery such as turbo-generators, pumps, and oil purifiers; maintain auxiliary machinery outside of main machinery spaces, such as electro-hydraulic steering gears, elevators, refrigeration plants, air conditioning systems, desalinization plants (distilling plants), and compressed gas producing plants; align piping systems for oil, water, air, and steam; control the operation of ship boilers and steam turbines used for ship propulsion and service systems; control operation of turbo-generators used to produce electrical power; clean, adjust, test, and perform other preventive maintenance on the ship's boilers, main engines, turbo-generators and other auxiliary machinery including steering engines, elevators, winches, pumps, and associated valves; operate and maintain desalinization plants; maintain refrigeration plants, air conditioning systems, and galley equipment; repair or replace valves, pumps, heat exchangers, compressors, steam turbines, and hydraulic or pneumatic control devices; make entries in and analyze machinery operating records and reports; and work under the supervision of a manager while learning the Propulsion Plant and Auxiliary Systems Maintainer trade and skill.

DoD Relationship**Group Title**

Other Mechanical and Electrical Equipment, General

DoD Code

169000

O*NET Relationship**Occupation Title**

Maintenance Workers, Machinery

SOC Code

49-9043.00

Job Family

Installation, Maintenance, and Repair

Skills*Troubleshooting**Systems Analysis**Operation and Control**Judgment and Decision Making**Systems Evaluation**Equipment Maintenance**Quality Control Analysis**Equipment Selection**Management of Material Resources**Reading Comprehension***Abilities***Written Comprehension**Selective Attention**Control Precision**Information Ordering**Manual Dexterity**Flexibility of Closure**Number Facility**Problem Sensitivity**Visual Color Discrimination**Arm-Hand Steadiness***LABORATORY MANAGEMENT****Paygrade****Task Type****Task Statements**

E5

CORE

Align boiler layouts

E4

CORE

Conduct salinity and conductivity indicator comparison tests

E4

CORE

Inventory oil lab test equipment and chemicals

E4

CORE

Prepare fuel, oil, and water reports

E4

CORE

Prepare reagents and chemicals

E4

CORE

Test feedwater

E4

CORE

Test Fuel Oil (FO) and Lube Oil (LO)

MECHANICAL SYSTEMS MAINTENANCE

<u>Paygrade</u>	<u>Task Type</u>	<u>Task Statements</u>
E4	CORE	Fabricate sealing gaskets
E5	CORE	Inspect flange shields
E4	CORE	Repair air casings
E4	CORE	Repair air compressors system components
E4	CORE	Repair air conditioning system components
E4	CORE	Repair air dryer system components
E4	CORE	Repair air ejector system components
E4	CORE	Repair air system components
E4	NON-CORE	Repair aircraft hangar doors
E4	CORE	Repair anchor windlasses system components
E4	CORE	Repair auxiliary cooling water systems components
E4	CORE	Repair auxiliary exhaust system components
E4	CORE	Repair auxiliary seawater circulating system components
E4	CORE	Repair auxiliary steam system components
E4	CORE	Repair ballasting and de-ballasting systems
E4	CORE	Repair bilge and stripping pump components
E4	CORE	Repair bilge and tank stripping system components
E4	CORE	Repair blowdown system components
E4	CORE	Repair boat davit system components
E4	CORE	Repair bow and stern ramp and door machinery components
E4	CORE	Repair capstan equipment components
E4	CORE	Repair catapult system components
E4	CORE	Repair chill water systems
E4	CORE	Repair condensate system pumps
E4	CORE	Repair conveyor system components
E4	CORE	Repair crane equipment components
E4	CORE	Repair Deaerating Feedwater Tanks (DFT)
E4	CORE	Repair diaphragm control valves
E4	CORE	Repair distillate transfer systems components
E4	CORE	Repair distilling plants components
E4	CORE	Repair dumbwaiter equipment components
E4	CORE	Repair elevator systems components
E4	CORE	Repair emergency feed pump system components
E4	CORE	Repair emergency shutdown equipment components

MECHANICAL SYSTEMS MAINTENANCE (CONT'D)

<u>Paygrade</u>	<u>Task Type</u>	<u>Task Statements</u>
E4	CORE	Repair engine air system components
E4	CORE	Repair evaporator injection systems (i.e., AMEROYAL)
E4	CORE	Repair fasteners
E4	CORE	Repair feed booster pumps
E4	CORE	Repair Feedwater Control (FWC) system components
E4	CORE	Repair fire and flushing pump components
E4	CORE	Repair firemain system components
E4	CORE	Repair flange shields
E4	CORE	Repair Forced Draft Blower (FDB) components
E4	CORE	Repair Fresh Water Drain Collecting Tank (FWDCT) pump components
E4	CORE	Repair fresh water drain system components
E4	CORE	Repair Fuel Oil (FO) compensating system components
E4	CORE	Repair Fuel Oil (FO) purifier system components
E4	CORE	Repair Fuel Oil (FO) quick closing valve components
E4	CORE	Repair Fuel Oil (FO) service pumps components
E4	CORE	Repair Fuel Oil (FO) transfer system components
E4	CORE	Repair galley equipment components
E4	CORE	Repair gland seal components
E4	CORE	Repair heat exchangers components
E4	CORE	Repair heating system components
E4	CORE	Repair hydraulic cargo hatch cover equipment components
E4	CORE	Repair hydraulic system components
E4	CORE	Repair hydrostatic test pumps components
E4	CORE	Repair jacking gear components
E4	CORE	Repair laundry equipment components
E4	CORE	Repair line shaft bearings components
E4	CORE	Repair Low Pressure (LP) steam drain system components
E4	CORE	Repair Lube Oil (LO) service pump components
E4	CORE	Repair Lube Oil (LO) transfer system components
E4	CORE	Repair main boiler components
E4	CORE	Repair main circulating pump components
E4	CORE	Repair main drain system components
E4	CORE	Repair main feed pump components
E4	CORE	Repair main feed system components

MECHANICAL SYSTEMS MAINTENANCE (CONT'D)

<u>Paygrade</u>	<u>Task Type</u>	<u>Task Statements</u>
E4	CORE	Repair main Lube Oil (LO) system components
E4	CORE	Repair mechanical and hydraulic steering gear system components
E4	CORE	Repair mess deck equipment components
E4	CORE	Repair monorail equipment components
E4	CORE	Repair oil and water separator system components
E4	CORE	Repair oil purification system components
E4	CORE	Repair oily waste water system components
E4	CORE	Repair piping system components
E4	CORE	Repair potable water brominators
E4	CORE	Repair potable water pump components
E4	CORE	Repair potable water systems
E4	CORE	Repair reducing station components
E4	CORE	Repair refrigerant recovery unit components
E4	CORE	Repair refrigeration system components
E4	CORE	Repair scullery equipment components
E4	CORE	Repair Ship's Service Turbine Generators (SSTG) components
E4	CORE	Repair ship's whistle components
E4	NON-CORE	Repair small boat mechanical components
E4	CORE	Repair stern tube components
E4	CORE	Repair system pump components
E4	CORE	Repair system valve components
E4	CORE	Repair trash room disposal and processing equipment components
E4	CORE	Repair water heater components
E4	CORE	Repair winch equipment components
E4	CORE	Replace flexible couplings

MECHANICAL SYSTEMS OPERATION

<u>Paygrade</u>	<u>Task Type</u>	<u>Task Statements</u>
E4	CORE	Control operations of air compressors
E4	CORE	Control operations of air conditioning systems
E4	CORE	Control operations of air dryer systems
E4	CORE	Control operations of air ejector systems
E4	CORE	Control operations of air systems
E4	NON-CORE	Control operations of aircraft hangar doors
E4	CORE	Control operations of anchor windlasses systems
E4	CORE	Control operations of auxiliary cooling water systems
E4	CORE	Control operations of auxiliary exhaust systems
E4	CORE	Control operations of auxiliary steam systems
E4	CORE	Control operations of bilge and stripping pumps
E4	CORE	Control operations of bilge and tank stripping systems
E4	CORE	Control operations of boat davit systems
E4	CORE	Control operations of bow and stern ramp and door machinery systems
E4	CORE	Control operations of capstan equipment
E4	CORE	Control operations of catapult systems
E4	CORE	Control operations of condensate systems
E4	CORE	Control operations of conveyor systems
E4	CORE	Control operations of crane equipment
E4	CORE	Control operations of diaphragm control valves
E4	CORE	Control operations of distillate transfer systems
E4	CORE	Control operations of distilling plants
E4	CORE	Control operations of dumbwaiter equipment
E4	CORE	Control operations of elevator systems
E4	CORE	Control operations of emergency feed pump systems
E4	CORE	Control operations of emergency shutdown equipment
E4	CORE	Control operations of engine air systems
E4	CORE	Control operations of evaporator injection systems (i.e., AMEROYAL)
E4	CORE	Control operations of Feedwater Control (FWC) systems
E4	CORE	Control operations of Forced Draft Blower (FDB)
E4	CORE	Control operations of fresh water drain systems
E4	CORE	Control operations of Fuel Oil (FO) purifier systems
E4	CORE	Control operations of Fuel Oil (FO) quick closing valves
E4	CORE	Control operations of Fuel Oil (FO) service pumps

MECHANICAL SYSTEMS OPERATION (CONT'D)

<u>Paygrade</u>	<u>Task Type</u>	<u>Task Statements</u>
E4	CORE	Control operations of Fuel Oil (FO) transfer systems
E4	CORE	Control operations of galley equipment
E4	CORE	Control operations of gland seal systems
E4	CORE	Control operations of heat exchangers
E4	CORE	Control operations of heating systems
E4	CORE	Control operations of hydraulic cargo hatch covers
E4	CORE	Control operations of hydraulic systems
E4	CORE	Control operations of hydrostatic test pump
E4	CORE	Control operations of jacking gear
E4	CORE	Control operations of laundry equipment
E4	CORE	Control operations of line shaft bearings
E4	CORE	Control operations of Low Pressure (LP) steam drain systems
E4	CORE	Control operations of Lube Oil (LO) service pumps
E4	CORE	Control operations of Lube Oil (LO) transfer systems
E4	CORE	Control operations of main boilers
E4	CORE	Control operations of main circulating pumps
E4	CORE	Control operations of main drain systems
E4	CORE	Control operations of main feed pumps
E4	CORE	Control operations of main feed systems
E4	CORE	Control operations of main Lube Oil (LO) systems
E4	CORE	Control operations of mechanical and hydraulic steering gear systems
E4	CORE	Control operations of mess deck equipment
E4	CORE	Control operations of monorail equipment
E4	CORE	Control operations of oil purification systems
E4	CORE	Control operations of piping systems
E4	CORE	Control operations of potable water brominators
E4	CORE	Control operations of potable water pumps
E4	CORE	Control operations of potable water systems
E4	CORE	Control operations of reducing stations
E4	CORE	Control operations of refrigeration systems
E4	CORE	Control operations of scullery equipment
E4	CORE	Control operations of Ship's Service Turbine Generators (SSTG)
E4	CORE	Control operations of stern tube components
E4	CORE	Control operations of system pumps

MECHANICAL SYSTEMS OPERATION (CONT'D)

<u>Paygrade</u>	<u>Task Type</u>	<u>Task Statements</u>
E4	CORE	Control operations of system valves
E4	CORE	Control operations of trash room disposal and processing equipment
E4	CORE	Control operations of ventilation systems
E4	CORE	Control operations of water heaters
E4	CORE	Control operations of winch equipment
E4	CORE	Control operations on auxiliary seawater circulating systems
E4	CORE	Control operations on ballasting and de-ballasting systems
E4	CORE	Control operations on blowdown systems
E4	CORE	Control operations on chill water systems
E4	CORE	Control operations on fire and flushing pumps
E4	CORE	Control operations on Fresh Water Drain Collecting Tank (FWDCT) pumps
E4	CORE	Control operations on main feed booster pumps
E4	CORE	Control operations on oil and water separator systems
E4	CORE	Control operations on oily waste water systems
E4	CORE	Draw fluid samples
E4	CORE	Inspect fluid samples
E4	CORE	Prepare continuous treatment solutions

Job Title**Propulsion Plant and Auxiliary Systems Technician****Job Code****003177****Job Family**

Installation, Maintenance, and Repair

NOC

TBD

Short Title (30 Characters)

PROPUL PLANT/AUX SYS TECHNICIAN

Short Title (14 Characters)

PROPUL SYS TECH

Pay Plan

Enlisted

Career Field

MM

Other Relationships and Rules

NEC UXXX and 7XXX series and other NECs as assigned

Job Description

Propulsion Plant and Auxiliary System Technicians operate and maintain steam turbines and reduction gears used for ship propulsion and auxiliary machinery, such as turbo-generators, pumps, and oil purifiers; maintain auxiliary machinery outside of main machinery spaces, such as electro-hydraulic gears, refrigeration plants, air conditioning systems, desalinization plants (distilling plants), and compressed gas producing plants; align piping systems for oil, water, air, and steam; control the operation of ship boilers and steam turbines used for ship propulsion and service systems; control operation of turbo-generators used to produce electrical power; clean, adjust, test, and perform other preventive maintenance on a ship's boilers, main engines, turbo-generators, and other auxiliary machinery including steering engines, elevators, winches, pumps and associated valves; operate and maintain desalinization plants; maintain refrigeration plants, air conditioning systems, and galley equipment; repair or replace valves, pumps, heat exchangers, compressors, steam turbines, and hydraulic or pneumatic control devices; make entries in and analyze machinery operating records and reports; work independently; and supervise/mentor Propulsion Plant and Auxiliary Maintainers.

DoD Relationship**Group Title**

Main Propulsion

DoD Code

165100

O*NET Relationship**Occupation Title**Maintenance and Repair Workers,
General**SOC Code**

49-9071.00

Job Family

Installation, Maintenance, and Repair

Skills*Equipment Selection**Repairing**Operation and Control**Judgment and Decision Making**Operation Monitoring**Systems Evaluation**Equipment Maintenance**Management of Material Resources**Monitoring**Quality Control Analysis***Abilities***Flexibility of Closure**Inductive Reasoning**Written Comprehension**Selective Attention**Information Ordering**Problem Sensitivity**Written Expression**Manual Dexterity***LABORATORY MANAGEMENT****Paygrade**

E5

Task Type

CORE

Task Statements

Align boiler layouts

E5

NON-CORE

Conduct spill containments and clean-ups

MECHANICAL SYSTEMS MAINTENANCE**Paygrade**

E5

Task Type

CORE

Task Statements

Inspect boiler sprayer plates

E5

CORE

Inspect fasteners

E4

CORE

Repair air register assemblies

E5

CORE

Repair boiler firesides

E5

CORE

Repair boiler fronts

E5

CORE

Repair boiler internal fittings

E5

CORE

Repair boiler sliding feet

E5

CORE

Repair boiler watersides

E5

CORE

Repair burner Safety Shut-off Devices (SSD)

E6

CORE

Repair machinery speed limiting devices

E5

CORE

Repair safety valves

MECHANICAL SYSTEMS MAINTENANCE (CONT'D)

<u>Paygrade</u>	<u>Task Type</u>	<u>Task Statements</u>
E5	CORE	Repair soot blower components
E5	CORE	Repair steam smothering systems
E5	CORE	Troubleshoot air compressors systems
E5	CORE	Troubleshoot air conditioning systems
E5	CORE	Troubleshoot air dryer systems
E5	CORE	Troubleshoot air ejector systems
E5	CORE	Troubleshoot air systems
E5	NON-CORE	Troubleshoot aircraft hangar doors
E5	CORE	Troubleshoot anchor windlasses systems
E5	CORE	Troubleshoot auxiliary cooling water systems
E5	CORE	Troubleshoot auxiliary exhaust systems
E5	CORE	Troubleshoot auxiliary seawater circulating systems
E5	CORE	Troubleshoot auxiliary steam systems
E5	CORE	Troubleshoot ballasting and de-ballasting systems
E5	CORE	Troubleshoot bilge and stripping pump systems
E5	CORE	Troubleshoot bilge and tank stripping systems
E5	CORE	Troubleshoot blowdown systems
E5	CORE	Troubleshoot boat davit systems
E5	CORE	Troubleshoot bow and stern ramp and door machinery systems
E5	CORE	Troubleshoot capstan equipment
E5	CORE	Troubleshoot catapult systems
E5	CORE	Troubleshoot chill water systems
E5	CORE	Troubleshoot condensate systems
E5	CORE	Troubleshoot conveyor systems
E5	CORE	Troubleshoot crane equipment
E5	CORE	Troubleshoot diaphragm control valves
E5	CORE	Troubleshoot distillate transfer systems
E5	CORE	Troubleshoot distilling plants
E5	CORE	Troubleshoot dumbwaiter equipment
E5	CORE	Troubleshoot elevator systems
E5	CORE	Troubleshoot emergency feed pump systems
E5	CORE	Troubleshoot emergency shutdown equipment
E5	CORE	Troubleshoot engine air systems
E5	CORE	Troubleshoot evaporator injection systems (i.e., AMEROYAL)

MECHANICAL SYSTEMS MAINTENANCE (CONT'D)

<u>Paygrade</u>	<u>Task Type</u>	<u>Task Statements</u>
E5	CORE	Troubleshoot Feedwater Control (FWC) systems
E5	CORE	Troubleshoot fire and flushing pumps
E5	CORE	Troubleshoot Forced Draft Blowers (FDB)
E5	CORE	Troubleshoot Fresh Water Drain Collecting Tank (FWDCT) pumps
E5	CORE	Troubleshoot fresh water drain systems
E5	CORE	Troubleshoot Fuel Oil (FO) compensating system
E5	CORE	Troubleshoot Fuel Oil (FO) fuel oil service pumps
E5	CORE	Troubleshoot Fuel Oil (FO) purifier systems
E5	CORE	Troubleshoot Fuel Oil (FO) quick closing valves
E5	CORE	Troubleshoot Fuel Oil (FO) transfer systems
E5	CORE	Troubleshoot galley equipment
E5	CORE	Troubleshoot gland seals
E5	CORE	Troubleshoot heat exchangers
E5	CORE	Troubleshoot heating systems
E5	CORE	Troubleshoot hydraulic cargo hatch cover equipment
E5	CORE	Troubleshoot hydraulic systems
E5	CORE	Troubleshoot hydrostatic test pumps
E5	CORE	Troubleshoot jacking gears
E5	CORE	Troubleshoot laundry equipment
E5	CORE	Troubleshoot line shaft bearings
E5	CORE	Troubleshoot Low Pressure (LP) steam drain systems
E5	CORE	Troubleshoot Lube Oil (LO) service pumps
E5	CORE	Troubleshoot Lube Oil (LO) transfer systems
E6	CORE	Troubleshoot machinery speed limiting devices
E5	CORE	Troubleshoot main boilers
E5	CORE	Troubleshoot main circulating pumps
E5	CORE	Troubleshoot main drain systems
E5	CORE	Troubleshoot main feed booster pumps
E5	CORE	Troubleshoot main feed pumps
E5	CORE	Troubleshoot main feed systems
E5	CORE	Troubleshoot main Lube Oil (LO) systems
E5	CORE	Troubleshoot mechanical and hydraulic steering gear systems
E5	CORE	Troubleshoot mess deck equipment
E5	CORE	Troubleshoot monorail equipment

MECHANICAL SYSTEMS MAINTENANCE (CONT'D)

<u>Paygrade</u>	<u>Task Type</u>	<u>Task Statements</u>
E5	CORE	Troubleshoot oil and water separator systems
E5	CORE	Troubleshoot oil purification systems
E5	CORE	Troubleshoot oily waste water systems
E5	CORE	Troubleshoot piping systems
E5	CORE	Troubleshoot potable water brominators
E5	CORE	Troubleshoot potable water pumps
E5	CORE	Troubleshoot potable water systems
E5	CORE	Troubleshoot reducing stations
E5	CORE	Troubleshoot refrigerant recovery units
E5	CORE	Troubleshoot refrigeration systems
E5	CORE	Troubleshoot scullery equipment
E5	CORE	Troubleshoot Ship's Service Turbine Generator (SSTG) systems
E5	CORE	Troubleshoot ship's whistles
E5	NON-CORE	Troubleshoot small boat mechanical components
E5	CORE	Troubleshoot stern tube components
E5	CORE	Troubleshoot system pumps
E5	CORE	Troubleshoot system valves
E5	CORE	Troubleshoot trash room disposal and processing equipment
E5	CORE	Troubleshoot water heaters
E5	CORE	Troubleshoot winch equipment

TECHNICAL ADMINISTRATION

<u>Paygrade</u>	<u>Task Type</u>	<u>Task Statements</u>
E5	CORE	Prepare Quality Assurance (QA) repair forms
E5	CORE	Update Quality Assurance (QA) repair forms

Job Title**Propulsion Plant and Auxiliary Systems Manager****Job Code****003651****Job Family**

Installation, Maintenance, and Repair

NOC

TBD

Short Title (30 Characters)

PROPU PLANT/AUX SYS MANAGER

Short Title (14 Characters)

PROPU SYS MGR

Pay Plan

Enlisted

Career Field

MM

Other Relationships and Rules

NEC UXXX and 7XXX series and other NECs as assigned

Job Description

Propulsion Plant Auxiliary Systems Managers operate and maintain steam turbines and reduction gears used for ship propulsion and auxiliary machinery, such as turbo-generators, pumps, and oil purifiers; maintain auxiliary machinery outside of main machinery spaces, such as electro-hydraulic gears, refrigeration plants, air conditioning systems, desalination plants (distilling plants), and compressed gas producing plants; align piping systems for oil, water, air, and steam; control the operation of ship boilers and steam turbines used for ship propulsion and service systems; control operation of turbo-generators used to produce electrical power; clean, adjust, test, and perform other preventive maintenance on a ship's boilers, main engines, turbo-generators and other auxiliary machinery including steering engines, elevators, winches, pumps, and associated valves; operate and maintain desalination plants; maintain refrigeration plants, air conditioning systems, and galley equipment; repair or replace valves, pumps, heat exchangers, compressors, steam turbines, and hydraulic or pneumatic control devices; make entries in and analyze machinery operating records and reports; manage Propulsion Plant and Auxiliary Systems Operations; and supervise and mentor Propulsion Plant and Auxiliary Systems Technicians and Maintainers to master the Propulsion Plant and Auxiliary Systems Operations trade and skills.

DoD RelationshipGroup Title

Main Propulsion

DoD Code

165100

O*NET RelationshipOccupation Title

First-Line Supervisors/Managers of Mechanics, Installers, and Repairers

SOC Code

49-1011.00

Job Family

Installation, Maintenance, and Repair

Skills*Operation and Control**Judgment and Decision Making**Equipment Selection**Systems Evaluation**Equipment Maintenance**Repairing**Troubleshooting**Critical Thinking**Management of Material Resources**Management of Personnel Resources***Abilities***Flexibility of Closure**Problem Sensitivity**Written Comprehension**Information Ordering**Selective Attention**Oral Expression**Deductive Reasoning**Inductive Reasoning**Mathematical Reasoning**Number Facility***ENGINEERING MANAGEMENT****Paygrade****Task Type****Task Statements**

E7	CORE	Conduct preliminary closeout inspections
E6	CORE	Coordinate boiler flexibility tests
E7	CORE	Coordinate full power and economy trials
E6	CORE	Coordinate propulsion plant operations
E7	CORE	Evaluate engineering management programs
E6	CORE	Evaluate equipment capabilities and performances
E7	CORE	Review Boiler Inspection and Repair Management Information Systems (BIRMIS) reports
E7	CORE	Review Steam Catapult Inspection and Repair Management Information Systems (SCIRMIS) reports
E7	CORE	Verify ship's trial reports

LABORATORY MANAGEMENT

<u>Paygrade</u>	<u>Task Type</u>	<u>Task Statements</u>
E5	CORE	Align boiler layups
E7	NON-CORE	Coordinate spill containments and clean-ups
E6	CORE	Estimate fuel, oil, and water requirements

MECHANICAL SYSTEMS MAINTENANCE

<u>Paygrade</u>	<u>Task Type</u>	<u>Task Statements</u>
E7	CORE	Coordinate Main Reduction Gear (MRG) inspections
E6	CORE	Inspect air casings
E6	CORE	Inspect air register assemblies
E7	CORE	Inspect boiler firesides
E6	CORE	Inspect boiler fronts
E7	CORE	Inspect boiler internal fittings
E6	CORE	Inspect boiler sliding feet
E6	CORE	Inspect boiler structural components
E7	CORE	Inspect boiler watersides
E6	CORE	Inspect burner Safety Shut-off Devices (SSD)
E6	CORE	Inspect Deaerating Feedwater Tanks (DFT)
E6	CORE	Inspect manhole and hand-hole seat gasket
E7	CORE	Inspect potable water tank
E7	CORE	Inspect safety valves
E6	CORE	Inspect soot blower
E6	CORE	Inspect steam smothering systems

TECHNICAL ADMINISTRATION

<u>Paygrade</u>	<u>Task Type</u>	<u>Task Statements</u>
E7	CORE	Approve Quality Assurance (QA) repair forms
E6	CORE	Review Quality Assurance (QA) repair forms
E6	CORE	Validate Engineering Operational Sequencing System (EOSS) manuals
E7	CORE	Verify ship's systems technical drawings