

CHAPTER 15



SPECIAL WARFARE BOAT OPERATOR (SB)

NAVPERS 18068-15B
CH-65

Updated: January 2016

TABLE OF CONTENTS
SPECIAL WARFARE BOAT OPERATOR (SB)

SCOPE OF RATING	SB-4
GENERAL INFORMATION	SB-5
SPECIAL WARFARE COMBATANT-CRAFT CREWMAN BASIC	SB-6
AIR INSERTION AND EXTRACTION OPERATIONS	SB-6
CHEMICAL, BIOLOGICAL, RADIOLOGICAL, AND NUCLEAR EXPLOSIVE (CBRNE) OPERATIONS	SB-7
CLASSIFIED MATERIAL CONTROL	SB-7
ENGINEERING EVOLUTIONS	SB-7
INTELLIGENCE OPERATIONS	SB-7
LAND OPERATIONS	SB-8
NAVAL SPECIAL WARFARE (NSW) CRAFT MOBILITY EVOLUTIONS	SB-8
NAVAL SPECIAL WARFARE (NSW) OPERATIONS	SB-8
NAVIGATION OPERATIONS	SB-9
ORDNANCE/DEMOLITION OPERATIONS	SB-9
SMALL BOAT OPERATIONS	SB-9
TACTICAL COMMUNICATIONS	SB-10
TACTICAL MEDICINE	SB-10
SPECIAL WARFARE COMBATANT-CRAFT CREWMAN SENIOR	SB-11
AIR INSERTION AND EXTRACTION OPERATIONS	SB-11
CHEMICAL, BIOLOGICAL, RADIOLOGICAL, AND NUCLEAR EXPLOSIVE (CBRNE) OPERATIONS	SB-12
CLASSIFIED MATERIAL CONTROL	SB-12
ENGINEERING EVOLUTIONS	SB-12
INTELLIGENCE OPERATIONS	SB-13
LAND OPERATIONS	SB-13
NAVAL SPECIAL WARFARE (NSW) CRAFT MOBILITY EVOLUTIONS	SB-13
NAVAL SPECIAL WARFARE (NSW) OPERATIONS	SB-14
NAVIGATION OPERATIONS	SB-15
ORDNANCE/DEMOLITION OPERATIONS	SB-15
SMALL BOAT OPERATIONS	SB-16
TACTICAL COMMUNICATIONS	SB-16
TACTICAL MEDICINE	SB-16
SPECIAL WARFARE COMBATANT-CRAFT CREWMAN MASTER	SB-17
AIR INSERTION AND EXTRACTION OPERATIONS	SB-17
CHEMICAL, BIOLOGICAL, RADIOLOGICAL, AND NUCLEAR EXPLOSIVE (CBRNE) OPERATIONS	SB-18
CLASSIFIED MATERIAL CONTROL	SB-18
ENGINEERING EVOLUTIONS	SB-18
INTELLIGENCE OPERATIONS	SB-19

TABLE OF CONTENTS
SPECIAL WARFARE BOAT OPERATOR (SB) (CONT)

LAND OPERATIONS	SB-19
NAVAL SPECIAL WARFARE (NSW) CRAFT MOBILITY EVOLUTIONS	SB-19
NAVAL SPECIAL WARFARE (NSW) OPERATIONS	SB-20
NAVIGATION OPERATIONS	SB-21
ORDNANCE/DEMOLITION OPERATIONS	SB-21
SMALL BOAT OPERATIONS	SB-22
TACTICAL COMMUNICATIONS	SB-22
TACTICAL MEDICINE	SB-22

NAVY ENLISTED OCCUPATIONAL STANDARD

FOR

SPECIAL WARFARE BOAT OPERATOR (SB)



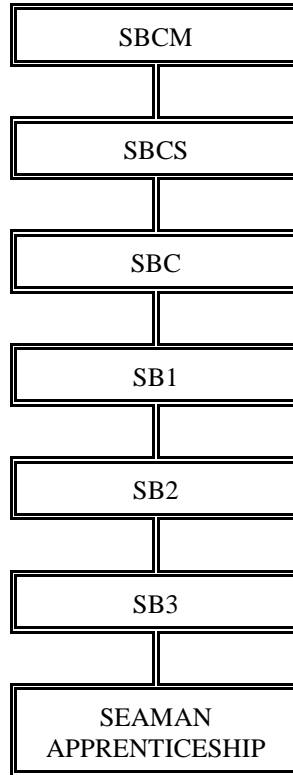
SCOPE OF RATING

Special Warfare Boat Operators (SB) conduct maritime Special Operations in open ocean, littoral, and riverine environments; provide maritime insertion and extraction of Special Operations Forces (SOF) and others; possess unique skills in the operation, maintenance, and repair of specially configured combatant/nonstandard craft; operate and maintain small arms and crew-served weapons, tactical communications equipment, Unmanned Aerial System (UAS)/Unmanned Underwater Vehicle (UUV), and use air delivery techniques to insert combatant craft. Other skills include small boat tactics, tactical ground mobility, call for fires, trauma care, intelligence gathering, interpretation, and chemical/biological/radiological/nuclear defense measures.

This Occupational Standard is to be incorporated in Volume I, Part B, of the Manual of Navy Enlisted Manpower and Personnel Classifications and Occupational Standards (NAVPERS 18068F) in Chapter 15.

GENERAL INFORMATION

CAREER PATTERN



Normal path of advancement to Chief Warrant Officer and Limited Duty Officer categories can be found in OPNAVINST 1420.1.

For rating entry requirements, refer to MILPERSMAN articles 1220-100, 1220-340, and 1306-618.

SAFETY

The observance of Operational Risk Management (ORM) and proper safety precautions in all areas is an integral part of each billet and the responsibility of every Sailor; therefore, it is a universal requirement for all ratings.

Job Title**Special Warfare Combatant-Craft Crewman Basic****Job Code****001775****Job Family**

Transportation and Material Moving

NOC

TBD

Short Title (30 Characters)

SPEC WARFARE COMBAT BASIC

Short Title (14 Characters)

SWCC BASIC

Pay Plan

Enlisted

Career Field

SB

Other Relationships and Rules

NEC 5352

Job Description

Special Warfare Combatant-Craft Crewmen Basic perform a multitude of duties during Special Operations missions; require skills to operate and maintain small arms and crew-served weapons, engineering systems, tactical communications equipment, Unmanned Aerial System (UAS)/Unmanned Underwater Vehicle (UUV), use air delivery techniques, tactical medicine, joint and combined operations, perform Nuclear, Biological, Chemical, and Radiological Defense (NBCRD), intelligence gathering, and interpret foreign language communications; and are experts in maritime operations.

DoD Relationship**Group Title**

Special Forces

DoD Code

101100

O*NET Relationship**Occupation Title**

Mates-Ship, Boat, and Barge

SOC Code

53-5021.02

Job Family

Transportation and Material Moving

Skills*Monitoring**Coordination**Operation and Control**Critical Thinking**Reading Comprehension**Troubleshooting**Equipment Selection**Equipment Maintenance**Operation Monitoring**Repairing***Abilities***Information Ordering**Memorization**Problem Sensitivity**Written Comprehension**Multi-limb Coordination**Inductive Reasoning**Oral Expression**Deductive Reasoning**Gross Body Coordination**Selective Attention***AIR INSERTION AND EXTRACTION OPERATIONS****Paygrade****Task Type****Task Statements**

E4

CORE

Conduct cargo and equipment insertion operations

E4

CORE

Conduct cast operations

E4

CORE

Conduct fast rope operations

E5

CORE

Conduct maritime egress operations (e.g. helo, parachute, etc.)

E4

CORE

Conduct rappelling operations

E4

CORE

Conduct Special Purpose Insertion Extraction (SPIE) operations

E4

CORE

Employ Maritime External Air Transportation System (MEATS)/ External Air Transportation System (EATS) Tactics, Techniques, and Procedures (TTP)

E4

CORE

Insert via free-fall parachute operations

E4

CORE

Insert via static-line parachute operations

E4

CORE

Pack parachutes

E5

CORE

Perform combatant craft air deployments

CHEMICAL, BIOLOGICAL, RADIOLOGICAL, AND NUCLEAR EXPLOSIVE (CBRNE) OPERATIONS

<u>Paygrade</u>	<u>Task Type</u>	<u>Task Statements</u>
E4	CORE	Administer initial treatment for Chemical, Biological, Radiological, and Nuclear (CBRN) injuries
E4	CORE	Decontaminate Chemical, Biological, Radiological, and Nuclear (CBRN) affected personnel and equipment
E4	CORE	Deliver protective measures for Chemical, Biological, Radiological, and Nuclear (CBRN) response

CLASSIFIED MATERIAL CONTROL

<u>Paygrade</u>	<u>Task Type</u>	<u>Task Statements</u>
E4	CORE	Control restricted area access
E4	CORE	Destroy classified materials
E4	CORE	Inventory classified materials
E4	CORE	Store classified materials
E4	CORE	Transfer classified materials
E5	CORE	Transfer electronic keying materials via Over the Air Transfers (OTAT) and Over the Air Rekeys (OTAR)
E4	CORE	Transfer physical Communication Security (COMSEC) material from the Electronic Key Management Systems (EKMS)

ENGINEERING EVOLUTIONS

<u>Paygrade</u>	<u>Task Type</u>	<u>Task Statements</u>
E4	CORE	Maintain combatant craft trailers
E4	CORE	Maintain combatant/Nonstandard Maritime (NSM) crafts
E4	CORE	Maintain engineering systems
E4	CORE	Maintain outboard motors
E4	CORE	Refuel Naval Special Warfare (NSW) platforms
E4	CORE	Respond to combatant/Nonstandard Maritime (NSM) craft casualties (e.g. fire, flooding, loss of steering, etc.)

INTELLIGENCE OPERATIONS

<u>Paygrade</u>	<u>Task Type</u>	<u>Task Statements</u>
E4	CORE	Collect intelligence information
E4	CORE	Control detained individuals
E4	CORE	Maintain tactical intelligence equipment
E4	CORE	Observe contacts (e.g. surface, subsurface, air, etc.)
E4	CORE	Report contacts (e.g. surface, sub surface, air, etc.)
E4	CORE	Report intelligence information
E4	CORE	Verify theatre Order of Battle (OOB)

LAND OPERATIONS

<u>Paygrade</u>	<u>Task Type</u>	<u>Task Statements</u>
E4	CORE	Conduct land navigations
E4	CORE	Employ basic ground skills techniques
E4	CORE	Employ Survival, Evasion, Resistance, and Escape (SERE) techniques

NAVAL SPECIAL WARFARE (NSW) CRAFT MOBILITY EVOLUTIONS

<u>Paygrade</u>	<u>Task Type</u>	<u>Task Statements</u>
E4	CORE	Conduct armed convoys
E4	CORE	Conduct ground mobility
E4	CORE	Disembark Naval Special Warfare (NSW) crafts on Afloat Forward Staging Bases (AFSB)
E4	CORE	Embark Naval Special Warfare (NSW) crafts on Afloat Forward Staging Bases (AFSB)
E4	CORE	Prepare combatant craft onloads/offloads for aircraft transport
E4	CORE	Transport personnel/equipment

NAVAL SPECIAL WARFARE (NSW) OPERATIONS

<u>Paygrade</u>	<u>Task Type</u>	<u>Task Statements</u>
E4	CORE	Combat enemy forces
E4	CORE	Conduct Naval Special Warfare (NSW) logistic operations
E4	CORE	Conduct operational briefs (e.g. navigational, medical, communications, etc.)
E4	CORE	Develop mission planning briefs
E5	CORE	Develop safety briefs
E4	CORE	Employ camouflage, cover, and concealment procedures
E4	CORE	Employ combative techniques
E4	CORE	Employ personal operational equipment
E5	CORE	Instruct foreign forces
E4	CORE	Maintain personal equipment
E5	CORE	Set up mission support sites
E6	CORE	Supervise combative techniques
E5	NON-CORE	Support Information Operations (IO)
E5	CORE	Support Special Reconnaissance (SR)
E5	CORE	Support Unmanned Aerial System (UAS) platforms
E5	CORE	Support Unmanned Underwater Vehicle (UUV)
E4	CORE	Verify Rules of Engagement (ROE)/Laws of Armed Conflict (LOAC)

NAVIGATION OPERATIONS

<u>Paygrade</u>	<u>Task Type</u>	<u>Task Statements</u>
E5	CORE	Calculate constant bearing and decreasing range of combatant craft to avoid collisions
E4	CORE	Calculate latitude and longitude from plotted position
E4	CORE	Calculate relative bearing
E4	CORE	Calculate set and drift
E4	CORE	Compute combatant/Nonstandard Maritime (NSM) crafts position using electronic navigation equipment
E4	CORE	Correct nautical charts
E4	CORE	Maintain chart maintenance inventories
E4	CORE	Plot dead reckoning tracks
E4	CORE	Plot tracks on charts

ORDNANCE/DEMOLITION OPERATIONS

<u>Paygrade</u>	<u>Task Type</u>	<u>Task Statements</u>
E4	CORE	Conduct weapons qualifications (i.e. small arms, crew served, Precision Guided Munition (PGM), etc.)
E4	CORE	Deploy pyrotechnics/signaling devices
E4	CORE	Employ weapons systems and ancillary gear (e.g. crew served, small arms, Precision Guided Munition (PGM), etc.)
E4	CORE	Inventory weapons and ancillary equipment (e.g. crew served, small arms, Precision Guided Munition (PGM), etc.)
E5	CORE	Maintain ammunition records
E4	CORE	Maintain fields of fire
E4	CORE	Maintain weapon mounts
E4	CORE	Maintain weapons and ancillary gear (e.g. crew served, small arms, Precision Guided Munition (PGM), etc.)
E5	CORE	Requisition ordnance
E5	CORE	Transport ordnance (e.g. CONUS, OCONUS, etc.)

SMALL BOAT OPERATIONS

<u>Paygrade</u>	<u>Task Type</u>	<u>Task Statements</u>
E4	CORE	Anchor combatant/Nonstandard Maritime (NSM) crafts
E5	CORE	Conduct combatant/Nonstandard Maritime (NSM) crafts station keeping
E4	CORE	Coxswain small boats
E4	CORE	Employ combatant craft/Nonstandard Maritime (NSM) safety equipment
E4	CORE	Employ small boat support equipment
E4	CORE	Maintain small boat support equipment
E4	CORE	Recover man overboard
E4	CORE	Tow combatant/Nonstandard Maritime (NSM) crafts

TACTICAL COMMUNICATIONS

<u>Paygrade</u>	<u>Task Type</u>	<u>Task Statements</u>
E6	CORE	Conduct call for fire procedures
E4	CORE	Conduct communications equipment security evolutions
E4	CORE	Establish communications
E4	CORE	Maintain communications equipment
E4	CORE	Perform Naval Special Warfare (NSW) non-verbal communication
E5	CORE	Verify Communications Electronic Operating Instructions (CEOI)

TACTICAL MEDICINE

<u>Paygrade</u>	<u>Task Type</u>	<u>Task Statements</u>
E4	CORE	Employ first aid kits and equipment
E4	CORE	Maintain first aid kits and equipment
E4	CORE	Perform Tactical Combat Casualty Care (TCCC)

Job Title

Special Warfare Combatant-Craft Crewman Senior

Job Code

001782

Job Family

Transportation and Material Moving

NOC

TBD

Short Title (30 Characters)

SPEC WARFARE COMBAT SENIOR

Short Title (14 Characters)

SWCC SENIOR

Pay Plan

Enlisted

Career Field

SB

Other Relationships and Rules

NEC 5352

Job Description

Special Warfare Combatant-Craft Crewmen Senior are responsible for their craft, their crew, any embarked personnel, and the safe navigation of their craft during special operations missions; supervise and direct the actions of their boat crews, including maintaining and operating the craft and its engineering, navigation, weapons, and tactical communications systems; plan and coordinate missions and conduct joint and combined operations; have positional authority over all persons embarked on their craft in accordance with Navy Regulations (Article 1033); and possess weapons release authority.

DoD Relationship

Group Title

Special Forces

DoD Code

101100

O*NET Relationship

Occupation Title

Ship and Boat Captains

SOC Code

53-5021.01

Job Family

Transportation and Material Moving

Skills

Monitoring

Operation and Control

Coordination

Critical Thinking

Reading Comprehension

Equipment Selection

Troubleshooting

Active Listening

Operation Monitoring

Speaking

Abilities

Problem Sensitivity

Information Ordering

Memorization

Inductive Reasoning

Written Comprehension

Oral Expression

Deductive Reasoning

Control Precision

Multi-limb Coordination

Selective Attention

AIR INSERTION AND EXTRACTION OPERATIONS

Pavgrade

Task Type

Task Statements

E4	CORE	Conduct cargo and equipment insertion operations
E4	CORE	Conduct cast operations
E4	CORE	Conduct fast rope operations
E5	CORE	Conduct maritime egress operations (e.g. helo, parachute, etc.)
E4	CORE	Conduct rappelling operations
E4	CORE	Conduct Special Purpose Insertion Extraction (SPIE) operations
E4	CORE	Employ Maritime External Air Transportation System (MEATS)/ External Air Transportation System (EATS) Tactics, Techniques, and Procedures (TTP)
E4	CORE	Insert via free-fall parachute operations
E4	CORE	Insert via static-line parachute operations
E4	CORE	Pack parachutes
E5	CORE	Perform combatant craft air deployments
E6	CORE	Supervise cargo and equipment insertion operations
E5	CORE	Supervise cast operations
E6	CORE	Supervise combatant craft for air deployments
E5	CORE	Supervise fast rope operations
E5	CORE	Supervise free-fall parachute operations
E5	CORE	Supervise land and water drop zone operations

E6	CORE	Supervise Maritime External Air Transportation System (MEATS)/External Air Transportation System (EATS) operations
E6	CORE	Supervise rappelling operations
E6	CORE	Supervise Special Purpose Insertion Extraction (SPIE) operations
E6	CORE	Supervise static-line parachuting operations

CHEMICAL, BIOLOGICAL, RADIOLOGICAL, AND NUCLEAR EXPLOSIVE (CBRNE) OPERATIONS

<u>Paygrade</u>	<u>Task Type</u>	<u>Task Statements</u>
E4	CORE	Administer initial treatment for Chemical, Biological, Radiological, and Nuclear (CBRN) injuries
E4	CORE	Decontaminate Chemical, Biological, Radiological, and Nuclear (CBRN) affected personnel and equipment
E4	CORE	Deliver protective measures for Chemical, Biological, Radiological, and Nuclear (CBRN) response
E6	CORE	Supervise Chemical, Biological, Radiological, and Nuclear (CBRN) monitoring operations

CLASSIFIED MATERIAL CONTROL

<u>Paygrade</u>	<u>Task Type</u>	<u>Task Statements</u>
E4	CORE	Control restricted area access
E4	CORE	Destroy classified materials
E4	CORE	Inventory classified materials
E4	CORE	Store classified materials
E4	CORE	Transfer classified materials
E5	CORE	Transfer electronic keying materials via Over the Air Transfers (OTAT) and Over the Air Rekeys (OTAR)
E4	CORE	Transfer physical Communication Security (COMSEC) material from the Electronic Key Management Systems (EKMS)

ENGINEERING EVOLUTIONS

<u>Paygrade</u>	<u>Task Type</u>	<u>Task Statements</u>
E7	CORE	Direct combatant/Nonstandard Maritime (NSM) craft casualties responses (e.g. fire, flooding, loss of steering, etc.)
E4	CORE	Maintain combatant craft trailers
E4	CORE	Maintain combatant/Nonstandard Maritime (NSM) crafts
E4	CORE	Maintain engineering systems
E4	CORE	Maintain outboard motors
E4	CORE	Refuel Naval Special Warfare (NSW) platforms
E4	CORE	Respond to combatant/Nonstandard Maritime (NSM) craft casualties (e.g. fire, flooding, loss of steering, etc.)
E6	CORE	Supervise combatant/Nonstandard Maritime (NSM) craft casualties responses (e.g. fire, flooding, loss of steering, etc.)
E6	CORE	Supervise combatant/Nonstandard Maritime (NSM) craft engineering system repairs
E6	CORE	Supervise combatant/Nonstandard Maritime (NSM) trailer repairs

E6	CORE	Supervise refueling
E6	CORE	Verify engineering reports

INTELLIGENCE OPERATIONS

<u>Paygrade</u>	<u>Task Type</u>	<u>Task Statements</u>
E4	CORE	Collect intelligence information
E4	CORE	Control detained individuals
E4	CORE	Maintain tactical intelligence equipment
E4	CORE	Observe contacts (e.g. surface, subsurface, air, etc.)
E4	CORE	Report contacts (e.g. surface, sub surface, air, etc.)
E4	CORE	Report intelligence information
E6	CORE	Supervise collection of classified information
E6	CORE	Verify Primary Intelligence Reports (PIR)/Navy Action Items (NAI)
E6	CORE	Verify tactical, operational, and strategic intelligence
E4	CORE	Verify theatre Order of Battle (OOB)

LAND OPERATIONS

<u>Paygrade</u>	<u>Task Type</u>	<u>Task Statements</u>
E4	CORE	Conduct land navigations
E7	CORE	Coordinate personnel recovery operations
E4	CORE	Employ basic ground skills techniques
E4	CORE	Employ Survival, Evasion, Resistance, and Escape (SERE) techniques
E7	CORE	Supervise basic ground skills techniques
E6	CORE	Supervise land navigations

NAVAL SPECIAL WARFARE (NSW) CRAFT MOBILITY EVOLUTIONS

<u>Paygrade</u>	<u>Task Type</u>	<u>Task Statements</u>
E4	CORE	Conduct armed convoys
E4	CORE	Conduct ground mobility
E4	CORE	Disembark Naval Special Warfare (NSW) crafts on Afloat Forward Staging Bases (AFSB)
E4	CORE	Embark Naval Special Warfare (NSW) crafts on Afloat Forward Staging Bases (AFSB)
E4	CORE	Launch combatant/Nonstandard Maritime (NSM) crafts
E4	CORE	Prepare combatant craft onloads/offloads for aircraft transport
E6	CORE	Supervise combatant craft onloads/offloads for aircraft transport
E6	CORE	Supervise embark/disembark of Naval Special Warfare (NSW) craft on Afloat Forward Staging Bases (AFSB)
E6	CORE	Supervise personnel/equipment transport
E4	CORE	Transport personnel/equipment

NAVAL SPECIAL WARFARE (NSW) OPERATIONS

<u>Paygrade</u>	<u>Task Type</u>	<u>Task Statements</u>
E4	CORE	Combat enemy forces
E4	CORE	Conduct Naval Special Warfare (NSW) logistic operations
E4	CORE	Conduct operational briefs (e.g. navigational, medical, communications, etc.)
E7	CORE	Conduct site surveys
E5	CORE	Conduct Special Operations (SO) technology and equipment research
E4	CORE	Develop mission planning briefs
E7	CORE	Develop Naval Special Warfare (NSW) Tactics, Techniques, and Procedures (TTP)
E5	CORE	Develop safety briefs
E4	CORE	Employ camouflage, cover, and concealment procedures
E4	CORE	Employ combative techniques
E4	CORE	Employ personal operational equipment
E5	CORE	Instruct foreign forces
E6	CORE	Instruct Naval Special Warfare (NSW) operations (e.g. air operations, navigation operations, etc.)
E4	CORE	Maintain personal equipment
E6	CORE	Plan Naval Special Warfare (NSW) operations
E6	CORE	Prepare mission plans
E6	CORE	Prepare operational reports (e.g. pre, post)
E5	CORE	Set up mission support sites
E6	CORE	Supervise camouflage, cover, and concealment procedures
E6	CORE	Supervise combative techniques
E6	CORE	Supervise Naval Special Warfare (NSW) logistics operations
E6	CORE	Supervise Naval Special Warfare (NSW) operations
E6	CORE	Supervise Special Operations Forces (SOF) extractions/insertions
E6	CORE	Supervise Unmanned Aerial System (UAS) missions
E6	CORE	Supervise Unmanned Underwater Vehicle (UUV) missions
E5	NON-CORE	Support Information Operations (IO)
E5	CORE	Support Special Reconnaissance (SR)
E5	CORE	Support Unmanned Aerial System (UAS) platforms
E5	CORE	Support Unmanned Underwater Vehicle (UUV)
E6	CORE	Track Naval Special Warfare (NSW) forces movements
E7	CORE	Update Naval Special Warfare (NSW) Tactics, Techniques, and Procedures (TTP)
E7	CORE	Verify Critical Command Intelligence Requirements (CCIR)
E6	CORE	Verify equipment inventories
E4	CORE	Verify Rules of Engagement (ROE)/Laws of Armed Conflict (LOAC)

NAVIGATION OPERATIONS

<u>Paygrade</u>	<u>Task Type</u>	<u>Task Statements</u>
E5	CORE	Calculate constant bearing and decreasing range of combatant craft to avoid collision
E4	CORE	Calculate latitude and longitude from plotted position
E4	CORE	Calculate relative bearing
E4	CORE	Calculate set and drift
E4	CORE	Compute combatant/Nonstandard Maritime (NSM) crafts position using electronic navigation equipment
E4	CORE	Correct nautical charts
E4	CORE	Maintain chart maintenance inventories
E4	CORE	Plot dead reckoning tracks
E4	CORE	Plot tracks on charts
E6	CORE	Verify nautical chart corrections

ORDNANCE/DEMOLITION OPERATIONS

<u>Paygrade</u>	<u>Task Type</u>	<u>Task Statements</u>
E4	CORE	Conduct weapons qualifications (i.e. small arms, crew served, Precision Guided Munition (PGM), etc.)
E4	CORE	Deploy pyrotechnics/signaling devices
E6	CORE	Designate fields of fire
E7	CORE	Direct weapons employment
E4	CORE	Employ weapons systems and ancillary gear (e.g. crew served, small arms, Precision Guided Munition (PGM), etc.)
E4	CORE	Inventory weapons and ancillary equipment (e.g. crew served, small arms, Precision Guided Munition (PGM), etc.)
E5	CORE	Maintain ammunition records
E4	CORE	Maintain fields of fire
E4	CORE	Maintain weapon mounts
E4	CORE	Maintain weapons and ancillary gear (e.g. crew served, small arms, Precision Guided Munition (PGM), etc.)
E5	CORE	Requisition ordnance
E6	CORE	Supervise weapons employment
E6	CORE	Supervise weapons qualifications (crew served, small arms, Precision Guided Munition (PGM), etc.)
E6	CORE	Supervise weapons range operations (e.g. static, dynamic, crew served, small arms, Precision Guided Munition (PGM), etc.)
E5	CORE	Supervise weapons systems and ancillary gear (e.g. crew served, small arms, Precision Guided Munition (PGM), etc.)
E6	CORE	Transfer custody of weapons and ancillary gear (e.g. crew served, small arms, Precision Guided Munition (PGM), etc.)
E5	CORE	Transport ordnance (e.g. CONUS, OCONUS, etc.)

SMALL BOAT OPERATIONS

<u>Paygrade</u>	<u>Task Type</u>	<u>Task Statements</u>
E4	CORE	Anchor combatant/Nonstandard Maritime (NSM) crafts
E5	CORE	Conduct combatant/Nonstandard Maritime (NSM) crafts station keeping
E5	CORE	Conduct rendezvous at sea
E4	CORE	Coxswain small boats
E6	CORE	Direct boat crews
E4	CORE	Employ combatant craft/Nonstandard Maritime (NSM) safety equipment
E4	CORE	Employ small boat support equipment
E4	CORE	Maintain small boat support equipment
E4	CORE	Recover combatant/Nonstandard Maritime (NSM) crafts
E4	CORE	Recover man overboard
E6	CORE	Supervise small boat operations
E6	CORE	Supervise towing/anchoring of combatant/Nonstandard Maritime (NSM) crafts
E4	CORE	Tow combatant/Nonstandard Maritime (NSM) crafts

TACTICAL COMMUNICATIONS

<u>Paygrade</u>	<u>Task Type</u>	<u>Task Statements</u>
E6	CORE	Conduct call for fire procedures
E4	CORE	Conduct communications equipment security evolutions
E6	CORE	Direct Naval Gunfire Support (NGFS) employments
E4	CORE	Establish communications
E4	CORE	Maintain communications equipment
E4	CORE	Perform Naval Special Warfare (NSW) non-verbal communication
E5	CORE	Verify Communications Electronic Operating Instructions (CEOI)

TACTICAL MEDICINE

<u>Paygrade</u>	<u>Task Type</u>	<u>Task Statements</u>
E6	CORE	Coordinate Casualty Evacuation (CASEVAC)/Medical Evacuations (MEDEVAC)
E6	CORE	Develop Casualty Evacuation (CASEVAC)/Medical Evacuation (MEDEVAC) plans
E4	CORE	Employ first aid kits and equipment
E4	CORE	Maintain first aid kits and equipment
E4	CORE	Perform Tactical Combat Casualty Care (TCCC)

Job Title**Special Warfare Combatant-Craft Crewman Master****Job Code****001787****Job Family**

Transportation and Material Moving

NOC

TBD

Short Title (30 Characters)

SPEC WARFARE COMBAT MASTER

Short Title (14 Characters)

SWCC MASTER

Pay Plan

Enlisted

Career Field

SB

Other Relationships and Rules

NEC 5352

Job Description

Special Warfare Combatant-Craft Crewmen Master are responsible for all troop/detachment craft, crewmen, and embarked personnel as well as the safe navigation of the detachment during Special Operations; accountable for all detachment weapons, ammunition, and cryptographic material; plan and coordinate missions and conduct joint and combined operations; brief troop/detachment and embarked personnel prior to getting underway and direct tactical patrols; have positional authority over all persons embarked on the detachment craft in accordance with Navy Regulations (Article 1033); and possess weapons release authority.

DoD Relationship**Group Title**

Special Forces

DoD Code

101100

O*NET Relationship**Occupation Title**

Ship and Boat Captains

SOC Code

53-5021.01

Job Family

Transportation and Material Moving

Skills*Monitoring**Operation and Control**Coordination**Critical Thinking**Reading Comprehension**Equipment Selection**Troubleshooting**Management of Material Resources**Active Listening**Operation Monitoring***Abilities***Problem Sensitivity**Inductive Reasoning**Information Ordering**Memorization**Written Comprehension**Deductive Reasoning**Oral Expression**Selective Attention**Control Precision**Multi-limb Coordination***AIR INSERTION AND EXTRACTION OPERATIONS****Paygrade****Task Type****Task Statements**

E4	CORE	Conduct cargo and equipment insertion operations
E4	CORE	Conduct cast operations
E4	CORE	Conduct fast rope operations
E5	CORE	Conduct maritime egress operations (e.g. helo, parachute, etc.)
E4	CORE	Conduct rappelling operations
E4	CORE	Conduct Special Purpose Insertion Extraction (SPIE) operations
E4	CORE	Employ Maritime External Air Transportation System (MEATS)/ External Air Transportation System (EATS) Tactics, Techniques, and Procedures (TTP)
E4	CORE	Insert via free-fall parachute operations
E4	CORE	Insert via static-line parachute operations
E4	CORE	Pack parachutes
E5	CORE	Perform combatant craft air deployments
E6	CORE	Supervise cargo and equipment insertion operations
E5	CORE	Supervise cast operations
E6	CORE	Supervise combatant craft for air deployments
E5	CORE	Supervise fast rope operations
E5	CORE	Supervise free-fall parachute operations
E5	CORE	Supervise land and water drop zone operations

E6	CORE	Supervise Maritime External Air Transportation System (MEATS)/External Air Transportation System (EATS) operations
E6	CORE	Supervise rappelling operations
E6	CORE	Supervise Special Purpose Insertion Extraction (SPIE) operations
E6	CORE	Supervise static-line parachuting operations

CHEMICAL, BIOLOGICAL, RADIOLOGICAL, AND NUCLEAR EXPLOSIVE (CBRNE) OPERATIONS

<u>Paygrade</u>	<u>Task Type</u>	<u>Task Statements</u>
E4	CORE	Administer initial treatment for Chemical, Biological, Radiological, and Nuclear (CBRN) injuries
E4	CORE	Decontaminate Chemical, Biological, Radiological, and Nuclear (CBRN) affected personnel and equipment
E4	CORE	Deliver protective measures for Chemical, Biological, Radiological, and Nuclear (CBRN) response
E7	CORE	Manage Chemical, Biological, Radiological, and Nuclear (CBRN) casualties
E6	CORE	Supervise Chemical, Biological, Radiological, and Nuclear (CBRN) monitoring operations

CLASSIFIED MATERIAL CONTROL

<u>Paygrade</u>	<u>Task Type</u>	<u>Task Statements</u>
E4	CORE	Control restricted area access
E4	CORE	Destroy classified materials
E4	CORE	Inventory classified materials
E4	CORE	Store classified materials
E4	CORE	Transfer classified materials
E5	CORE	Transfer electronic keying materials via Over the Air Transfers (OTAT) and Over the Air Rekeys (OTAR)
E4	CORE	Transfer physical Communication Security (COMSEC) material from the Electronic Key Management Systems (EKMS)

ENGINEERING EVOLUTIONS

<u>Paygrade</u>	<u>Task Type</u>	<u>Task Statements</u>
E7	CORE	Direct combatant/Nonstandard Maritime (NSM) craft casualties responses (e.g. fire, flooding, loss of steering, etc.)
E4	CORE	Maintain combatant craft trailers
E4	CORE	Maintain combatant/Nonstandard Maritime (NSM) crafts
E4	CORE	Maintain engineering systems
E4	CORE	Maintain outboard motors
E4	CORE	Refuel Naval Special Warfare (NSW) platforms
E4	CORE	Respond to combatant/Nonstandard Maritime (NSM) craft casualties (e.g. fire, flooding, loss of steering, etc.)
E6	CORE	Supervise combatant/Nonstandard Maritime (NSM) craft casualties responses (e.g. fire, flooding, loss of steering, etc.)
E6	CORE	Supervise combatant/Nonstandard Maritime (NSM) craft engineering system repairs

E6	CORE	Supervise combatant/Nonstandard Maritime (NSM) trailer repairs
E6	CORE	Supervise refueling
E7	CORE	Validate engineering reports
E6	CORE	Verify engineering reports

INTELLIGENCE OPERATIONS

<u>Paygrade</u>	<u>Task Type</u>	<u>Task Statements</u>
E4	CORE	Collect intelligence information
E4	CORE	Control detained individuals
E4	CORE	Maintain tactical intelligence equipment
E4	CORE	Observe contacts (e.g. surface, subsurface, air, etc.)
E4	CORE	Report contacts (e.g. surface, sub surface, air, etc.)
E4	CORE	Report intelligence information
E6	CORE	Supervise collection of classified information
E7	CORE	Validate intelligence debriefs
E6	CORE	Verify Primary Intelligence Reports (PIR)/Navy Action Items (NAI)
E6	CORE	Verify tactical, operational, and strategic intelligence
E4	CORE	Verify theatre Order of Battle (OOB)

LAND OPERATIONS

<u>Paygrade</u>	<u>Task Type</u>	<u>Task Statements</u>
E4	CORE	Conduct land navigations
E7	CORE	Coordinate personnel recovery operations
E4	CORE	Employ basic ground skills techniques
E4	CORE	Employ Survival, Evasion, Resistance, and Escape (SERE) techniques
E7	CORE	Supervise basic ground skills techniques
E6	CORE	Supervise land navigations

NAVAL SPECIAL WARFARE (NSW) CRAFT MOBILITY EVOLUTIONS

<u>Paygrade</u>	<u>Task Type</u>	<u>Task Statements</u>
E4	CORE	Conduct armed convoys
E4	CORE	Conduct ground mobility
E4	CORE	Disembark Naval Special Warfare (NSW) crafts on Afloat Forward Staging Bases (AFSB)
E4	CORE	Embark Naval Special Warfare (NSW) crafts on Afloat Forward Staging Bases (AFSB)
E4	CORE	Launch combatant/Nonstandard Maritime (NSM) crafts
E7	CORE	Manage Naval Special Warfare (NSW) combatant crafts mobility procedures
E4	CORE	Prepare combatant craft onloads/offloads for aircraft transport
E6	CORE	Supervise combatant craft onloads/offloads for aircraft transport
E6	CORE	Supervise embark/disembark of Naval Special Warfare (NSW) craft on Afloat Forward Staging Bases (AFSB)
E6	CORE	Supervise personnel/equipment transport
E4	CORE	Transport personnel/equipment

NAVAL SPECIAL WARFARE (NSW) OPERATIONS

<u>Paygrade</u>	<u>Task Type</u>	<u>Task Statements</u>
E4	CORE	Combat enemy forces
E4	CORE	Conduct Naval Special Warfare (NSW) logistic operations
E4	CORE	Conduct operational briefs (e.g. navigational, medical, communications, etc.)
E7	CORE	Conduct site surveys
E5	CORE	Conduct Special Operations (SO) technology and equipment research
E4	CORE	Develop mission planning briefs
E7	CORE	Develop Naval Special Warfare (NSW) Tactics, Techniques, and Procedures (TTP)
E5	CORE	Develop safety briefs
E7	CORE	Direct Special Operations Forces (SOF) extractions/insertions
E4	CORE	Employ camouflage, cover, and concealment procedures
E4	CORE	Employ combative techniques
E4	CORE	Employ personal operational equipment
E7	CORE	Evaluate Naval Special Warfare (NSW) mission readiness
E5	CORE	Instruct foreign forces
E6	CORE	Instruct Naval Special Warfare (NSW) operations (e.g. air operations, navigation operations, etc.)
E4	CORE	Maintain personal equipment
E7	CORE	Manage camouflage, cover, and concealment procedures
E7	CORE	Manage Naval Special Warfare (NSW) logistics
E7	CORE	Manage Naval Special Warfare (NSW) operations
E7	CORE	Manage Special Reconnaissance (SR) operations
E7	CORE	Manage Special Warfare Boat Operator (SB) resources
E7	CORE	Manage Unmanned Aerial System (UAS) missions
E7	CORE	Manage Unmanned Underwater Vehicle (UUV) missions
E6	CORE	Plan Naval Special Warfare (NSW) operations
E6	CORE	Prepare mission plans
E6	CORE	Prepare operational reports (e.g. pre, post)
E5	CORE	Set up mission support sites
E6	CORE	Supervise camouflage, cover, and concealment procedures
E6	CORE	Supervise combative techniques
E6	CORE	Supervise Naval Special Warfare (NSW) logistics operations
E6	CORE	Supervise Naval Special Warfare (NSW) operations
E6	CORE	Supervise Special Operations Forces (SOF) extractions/insertions
E6	CORE	Supervise Unmanned Aerial System (UAS) missions
E6	CORE	Supervise Unmanned Underwater Vehicle (UUV) missions
E5	NON-CORE	Support Information Operations (IO)

<u>Paygrade</u>	<u>Task Type</u>	<u>Task Statements</u>
E5	CORE	Support Special Reconnaissance (SR)
E5	CORE	Support Unmanned Aerial System (UAS) platforms
E5	CORE	Support Unmanned Underwater Vehicle (UUV)
E6	CORE	Track Naval Special Warfare (NSW) forces movements
E7	CORE	Update Naval Special Warfare (NSW) Tactics, Techniques, and Procedures (TTP)
E7	CORE	Verify Critical Command Intelligence Requirements (CCIR)
E6	CORE	Verify equipment inventories
E4	CORE	Verify Rules of Engagement (ROE)/Laws of Armed Conflict (LOAC)

NAVIGATION OPERATIONS

<u>Paygrade</u>	<u>Task Type</u>	<u>Task Statements</u>
E5	CORE	Calculate constant bearing and decreasing range of combatant craft to avoid collisions
E4	CORE	Calculate latitude and longitude from plotted position
E4	CORE	Calculate relative bearing
E4	CORE	Calculate set and drift
E4	CORE	Compute combatant/Nonstandard Maritime (NSM) crafts position using electronic navigation equipment
E4	CORE	Correct nautical charts
E4	CORE	Maintain chart maintenance inventories
E4	CORE	Plot dead reckoning tracks
E4	CORE	Plot tracks on charts
E6	CORE	Verify nautical chart corrections

ORDNANCE/DEMOLITION OPERATIONS

<u>Paygrade</u>	<u>Task Type</u>	<u>Task Statements</u>
E4	CORE	Conduct weapons qualifications (i.e. small arms, crew served, Precision Guided Munition (PGM), etc.)
E4	CORE	Deploy pyrotechnics/signaling devices
E6	CORE	Designate fields of fire
E7	CORE	Direct weapons employment
E4	CORE	Employ weapons systems and ancillary gear (e.g. crew served, small arms, Precision Guided Munition (PGM), etc.)
E4	CORE	Inventory weapons and ancillary equipment (e.g. crew served, small arms, Precision Guided Munition (PGM), etc.)
E5	CORE	Maintain ammunition records
E4	CORE	Maintain fields of fire
E4	CORE	Maintain weapon mounts
E4	CORE	Maintain weapons and ancillary gear (e.g. crew served, small arms, Precision Guided Munition (PGM), etc.)
E5	CORE	Requisition ordnance

E6	CORE	Supervise weapons employment
E6	CORE	Supervise weapons qualifications (crew served, small arms, Precision Guided Munition (PGM), etc.)
E6	CORE	Supervise weapons range operations (e.g. static, dynamic, crew served, small arms, Precision Guided Munition (PGM), etc.)
E5	CORE	Supervise weapons systems and ancillary gear (e.g. crew served, small arms, Precision Guided Munition (PGM), etc.)
E6	CORE	Transfer custody of weapons and ancillary gear (e.g. crew served, small arms, Precision Guided Munition (PGM), etc.)
E5	CORE	Transport ordnance (e.g. CONUS, OCONUS, etc.)

SMALL BOAT OPERATIONS

<u>Paygrade</u>	<u>Task Type</u>	<u>Task Statements</u>
E4	CORE	Anchor combatant/Nonstandard Maritime (NSM) crafts
E5	CORE	Conduct combatant/Nonstandard Maritime (NSM) crafts station keeping
E5	CORE	Conduct rendezvous at sea
E4	CORE	Coxswain small boats
E6	CORE	Direct boat crews
E7	CORE	Direct combatant/Nonstandard Maritime (NSM) craft detachments
E4	CORE	Employ combatant craft/Nonstandard Maritime (NSM) safety equipment
E4	CORE	Employ small boat support equipment
E4	CORE	Maintain small boat support equipment
E4	CORE	Recover combatant/Nonstandard Maritime (NSM) crafts
E4	CORE	Recover man overboard
E6	CORE	Supervise small boat operations
E6	CORE	Supervise towing/anchoring of combatant/Nonstandard Maritime (NSM) crafts
E4	CORE	Tow combatant/Nonstandard Maritime (NSM) crafts

TACTICAL COMMUNICATIONS

<u>Paygrade</u>	<u>Task Type</u>	<u>Task Statements</u>
E6	CORE	Conduct call for fire procedures
E4	CORE	Conduct communications equipment security evolutions
E6	CORE	Direct Naval Gunfire Support (NGFS) employments
E4	CORE	Establish communications
E4	CORE	Maintain communications equipment
E4	CORE	Perform Naval Special Warfare (NSW) non-verbal communication
E5	CORE	Verify Communications Electronic Operating Instructions (CEOI)

TACTICAL MEDICINE

<u>Paygrade</u>	<u>Task Type</u>	<u>Task Statements</u>
E6	CORE	Coordinate Casualty Evacuation (CASEVAC)/Medical Evacuations (MEDEVAC)
E6	CORE	Develop Casualty Evacuation (CASEVAC)/Medical Evacuation (MEDEVAC) plans

E4	CORE	Employ first aid kits and equipment
E4	CORE	Maintain first aid kits and equipment
E4	CORE	Perform Tactical Combat Casualty Care (TCCC)